

Figure S1. Progression-free survival of the study population (median PFS =4.2 months).

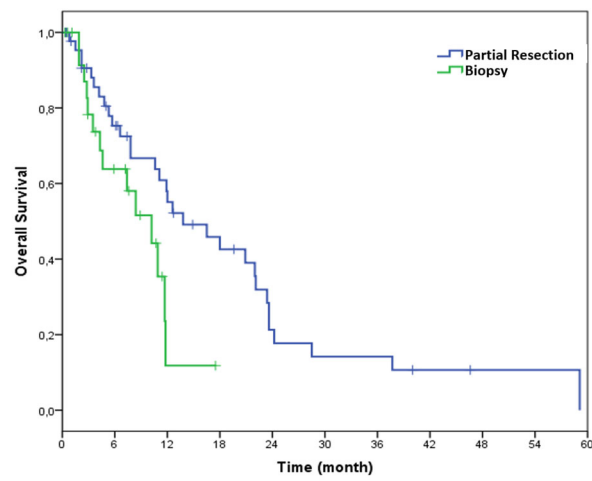


Figure S2. OS Kaplan-Meier curves for the extent of resection: partial resection (median OS=13.8 months) vs biopsy (median OS=10.2 months).

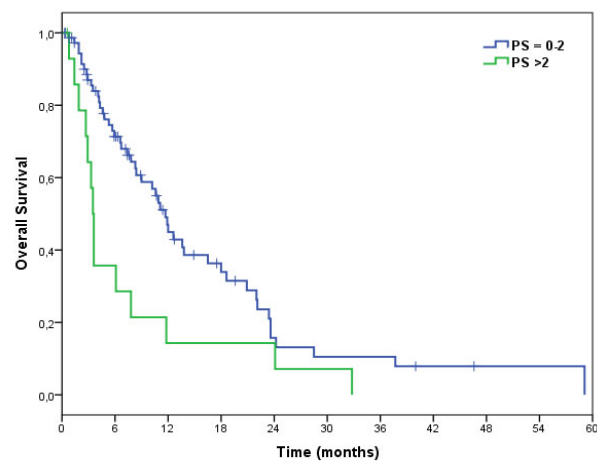


Figure S3. OS Kaplan-Meier curves for the ECOG PS: 0-2 (median OS=11.7 months) vs >2 (median OS=3.5 months).

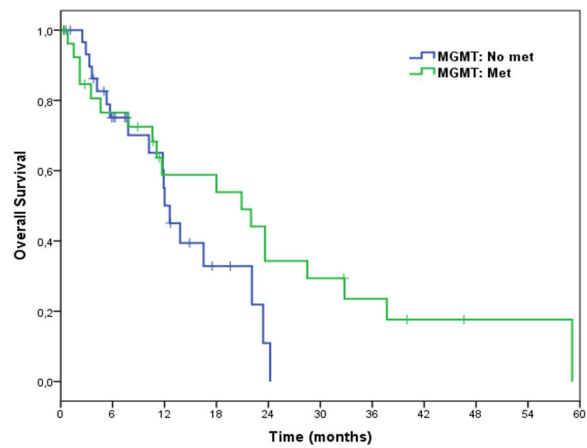


Figure S4. OS Kaplan-Meier curves for the MGMT status: MGMT methylated (median OS=20.9 months) vs MGMT unmethylated (median OS=12.6 months).

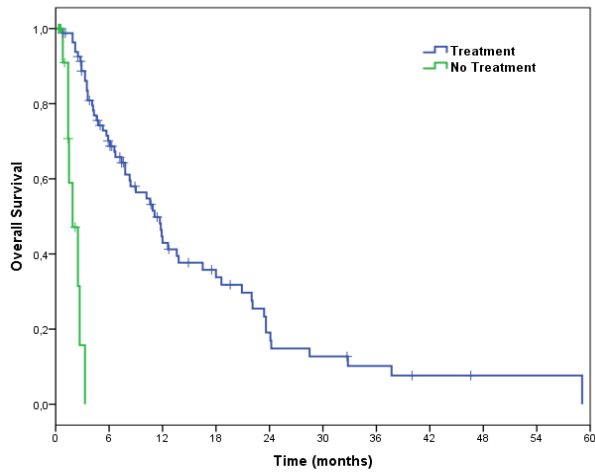


Figure S5. OS Kaplan-Meier curves for the active oncological treatment: yes (median OS=11.1 months) vs no (median OS=1.9 months).

Table S1. Progression-free survival (PFS) analysis using the Kaplan-Meier method and log-rank test.

	Total N	N of Events	Median PFS	IC 95%	P value
Extent of resection					0.007
PR	45	40	6.6	5.0-8.2	
Biopsy	26	20	3.6	2.6-4.6	
ECOG PS					0.331
0-2	74	63	4.8	3.5-6.1	
>2	15	14	3.3	2.0-4.6	
MGMT status					0.137
Unmet	31	27	6.8	5.0-8.6	
Met	28	24	5.4	2.2-8.6	
Active oncological treatment					<0.001

	Yes	82	74	4.8	3.7-5.9
	No	16	9	1.7	1.2-2.3
<hr/>					
RT+TMZ					<0.001
	Yes	54	50	6.9	4.9-8.9
	No	44	33	2.4	1.9-2.9

ECOG PS=Eastern Cooperative Oncology Group Performance Status; MGMT= O-6-methylguanine DNA methyltransferase; RT=Radiotherapy; TMZ=Temozolomide

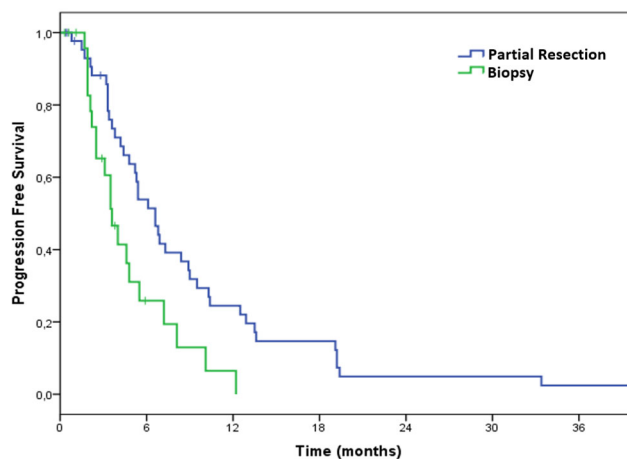


Figure S6. PFS Kaplan-Meier curves for the extent of resection: partial resection (median PFS=6.6 months) vs biopsy (median PFS=3.6 months).

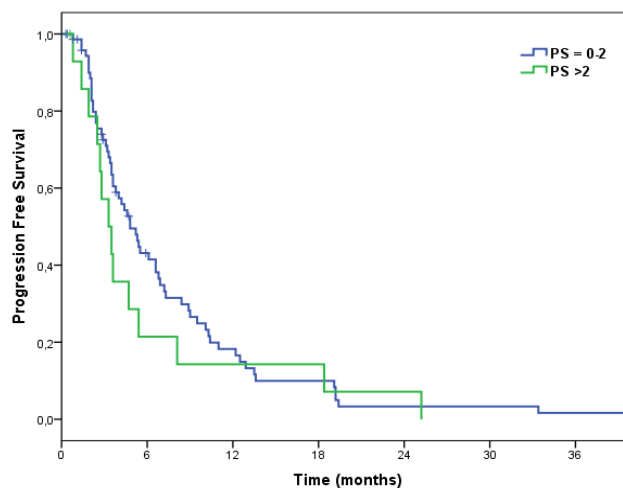


Figure S7. PFS Kaplan-Meier curves for the ECOG PS: 0-2 (median PFS=4.8 months) vs >2 (median PFS=3.3 months).

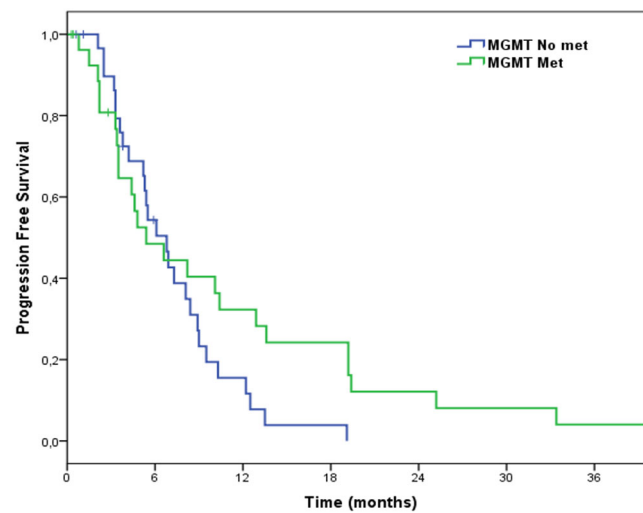


Figure S8. PFS Kaplan-Meier curves for the MGMT status: MGMT methylated (median PFS=5.4 months) vs MGMT unmethylated (median PFS=6.8 months).

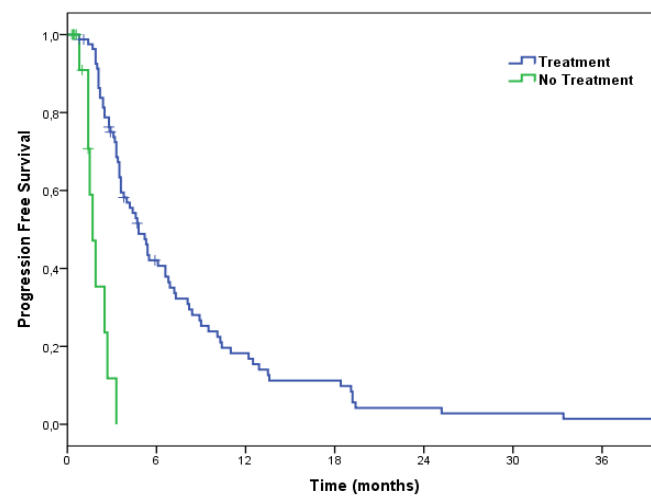


Figure S9. PFS Kaplan-Meier curves for the active oncological treatment: yes (median PFS=4.8 months) vs no (median PFS=1.7 months).

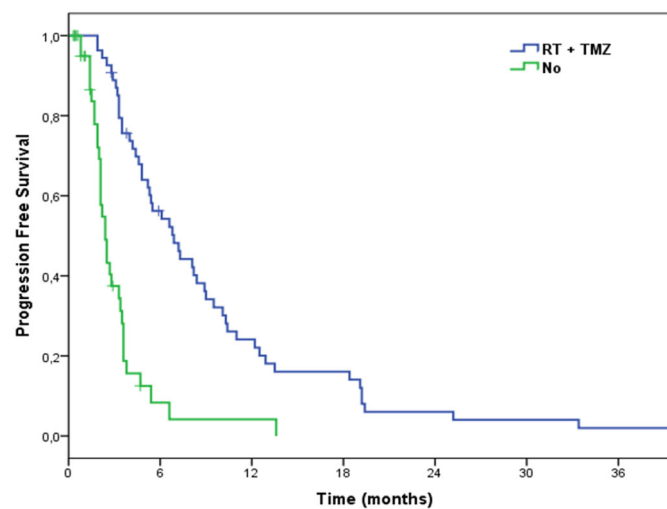


Figure S10. PFSS Kaplan-Meier curves for the RT+TMZ: yes (medianOS=6.9 months) vs no (median PFS=2.4 months).

Table S2. Adverse events according to the CTCAE v5.0 classification.

Adverse events		Active oncol.		RT+TMZ	TMZ alone	RT alone	
		Treatment (N.82)		(N.54)	(N.26)	(N.2)	
Hematological							
Anemia				9	5	0	(0%)
Grade 1	14	(17%)		(17	(19	0	(0%)
2	2	(2%)		%)	%)	0	(0%)
3	0	(0%)	1	(2%)1	(4%)		
4			0	(0%)0	(0%)		
	1	(1%)	1	(2%)0	(0%)0		(0%)
Neutropenia							
Grade 1	1	(1%)	1	(2%)0	(0%)0		(0%)
2	1	(1%)	1	(2%)0	(0%)0		(0%)
3	0	(0%)	0	(0%)0	(0%)0		(0%)
4	3	(4%)	1	(2%)2	(8%)0		(0%)
Thrombocytopenia							
				6	9	0	(0%)
Grade 1	15	(18%)		(11	(35	0	(0%)
2	3	(4%)		%)	%)	0	(0%)
3	3	(4%)	3	(6%)0	(0%)0		(0%)
4	3	(4%)	2	(4%)1	(4%)		
			2	(4%)1	(4%)		
Febrile Neutropenia							
Grade 3	1	(1%)	1	(2%)0	(0%)0		(0%)
4	0	(0%)	0	(0%)0	(0%)0		(0%)
Gastrointestinal disorders							
Nausea							
Grade 1	4	(5%)	4	(5%)4	(5%)0		(0%)
2	1	(1%)	1	(1%)1	(1%)0		(0%)
3	0	(0%)	0	(0%)0	(0%)0		(0%)
Constipation							
					4	0	(0%)
Grade 1	5	(6%)	1	(2%)	(15	0	(0%)
2	0	(0%)	0	(0%)	%)	0	(0%)
3	1	(1%)	1	(2%)0	(0%)0		(0%)
4	0	(0%)	0	(0%)0	(0%)		
				0	(0%)		
AST/ALT elevation							
Grade 1	6	(7%)	4	(7%)2	(8%)0		(0%)
2	1	(1%)	0	(0%)1	(4%)0		(0%)
3	0	(0%)	0	(0%)0	(0%)0		(0%)
4	0	(0%)	0	(0%)0	(0%)0		(0%)
GGT elevation							
Grade 1	0	(0%)	0	(0%)0	(0%)0		(0%)
2	0	(0%)	0	(0%)0	(0%)0		(0%)
3	1	(1%)	0	(0%)1	(4%)0		(0%)
4	0	(0%)	0	(0%)0	(0%)0		(0%)
Hyperbilirubinemia							
Grade 1	1	(1%)	1	(2%)0	(0%)0		(0%)
2	0	(0%)	0	(0%)0	(0%)0		(0%)
3	0	(0%)	0	(0%)0	(0%)0		(0%)
4	0	(0%)	0	(0%)0	(0%)0		(0%)

General disorders							
Fatigue				7		0	(0%)
Grade 1	9	(11%)		(13	2	(8%)0	(0%)
2	3	(4%)		%)	1	(4%)0	(0%)
3	0	(0%)	2	(4%)0		(0%)	
			0	(0%)			
Infections							
Herpes zoster	1	(1%)	1	(2%)0		(0%)0	(0%)

RT=Temozolomide; RT=Radiotherapy; AST=Aspartate transaminase; ALT=Alanine transaminase; GGT=Gamma-glutamyl transferase.