

Systematic Review

Neoadjuvant Short-Course Radiotherapy Followed by Consolidation Chemotherapy before Surgery for Treating Locally Advanced Rectal Cancer: A Systematic Review and Meta-Analysis

Chun-Kai Liao, Ya-Ting Kuo, Yueh-Chen Lin, Yih-Jong Chern, Yu-Jen Hsu, Yen-Lin Yu, Jy-Ming Chiang, Pao-Shiu Hsieh, Chien-Yuh Yeh and Jeng-Fu You

Supplementary Materials

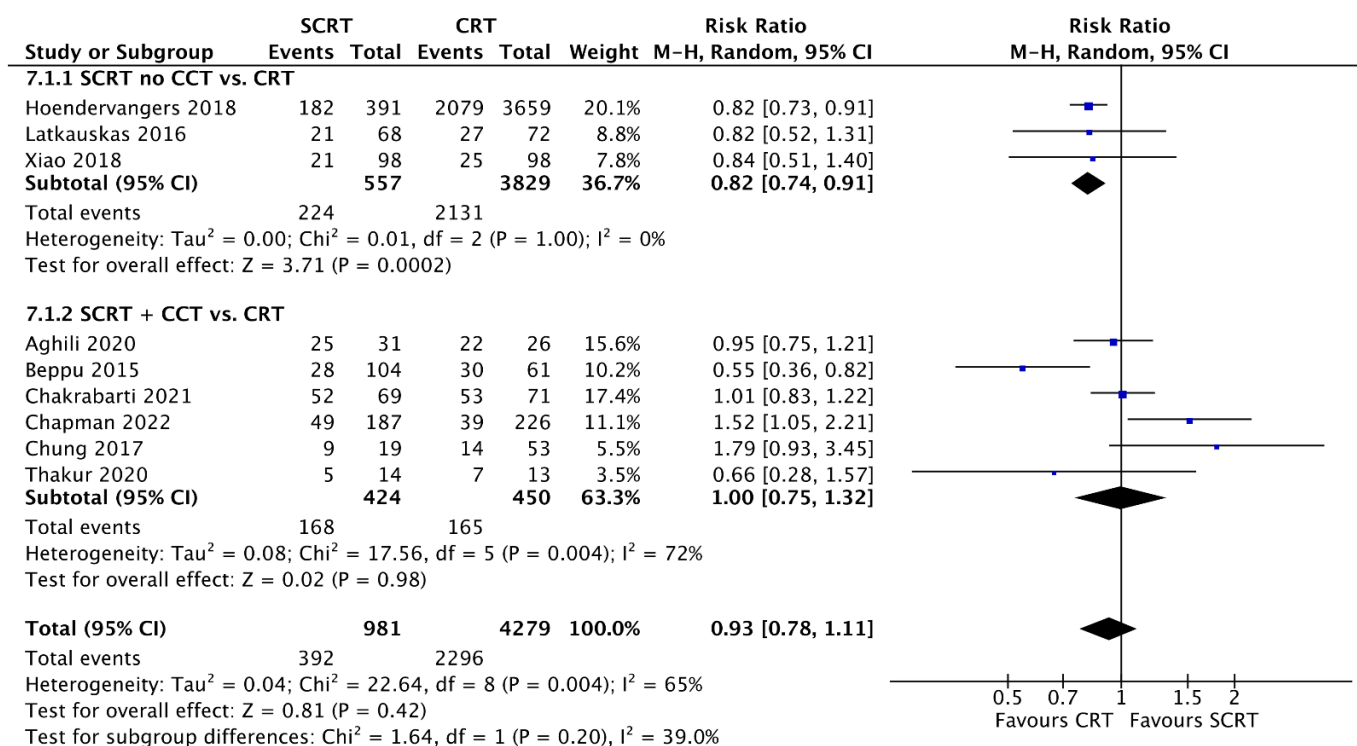


Figure S1. Forest plot of down staging rate after neoadjuvant treatment.

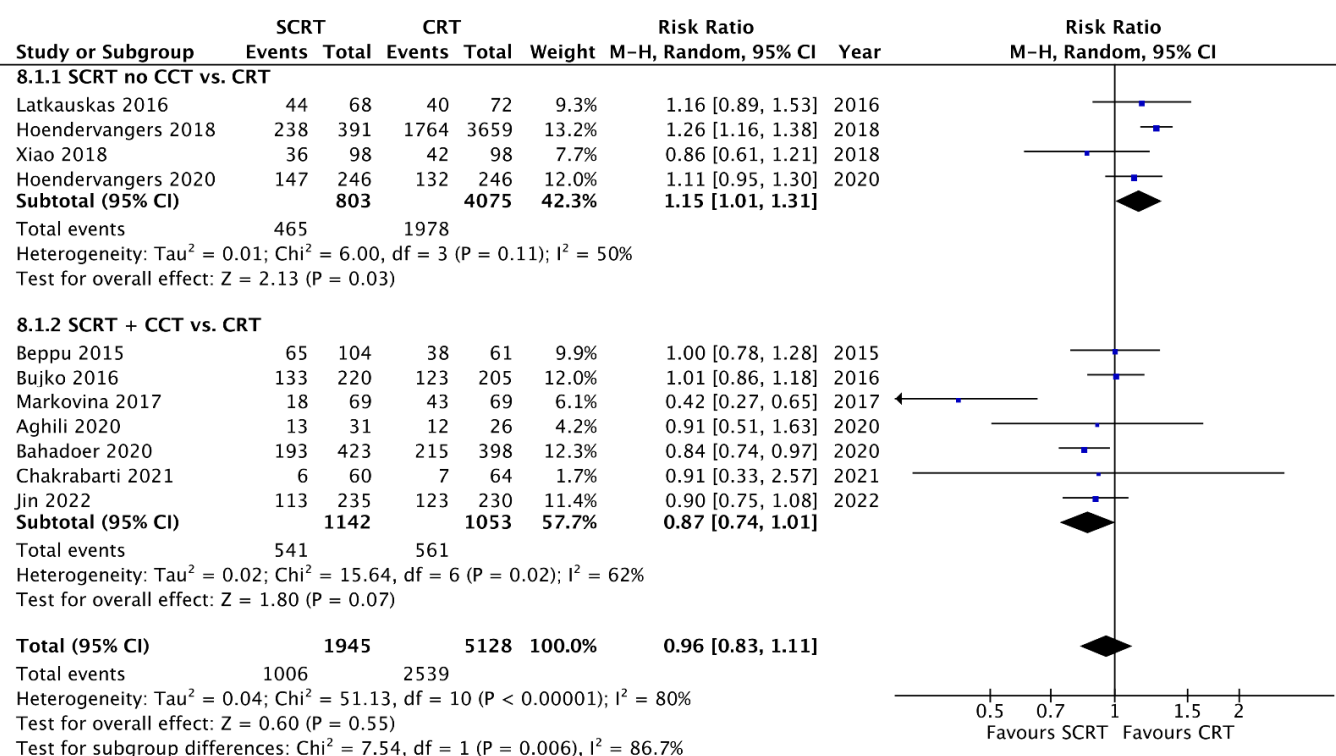


Figure S2. Forest plot of ypT3-4 rate after neoadjuvant treatment.

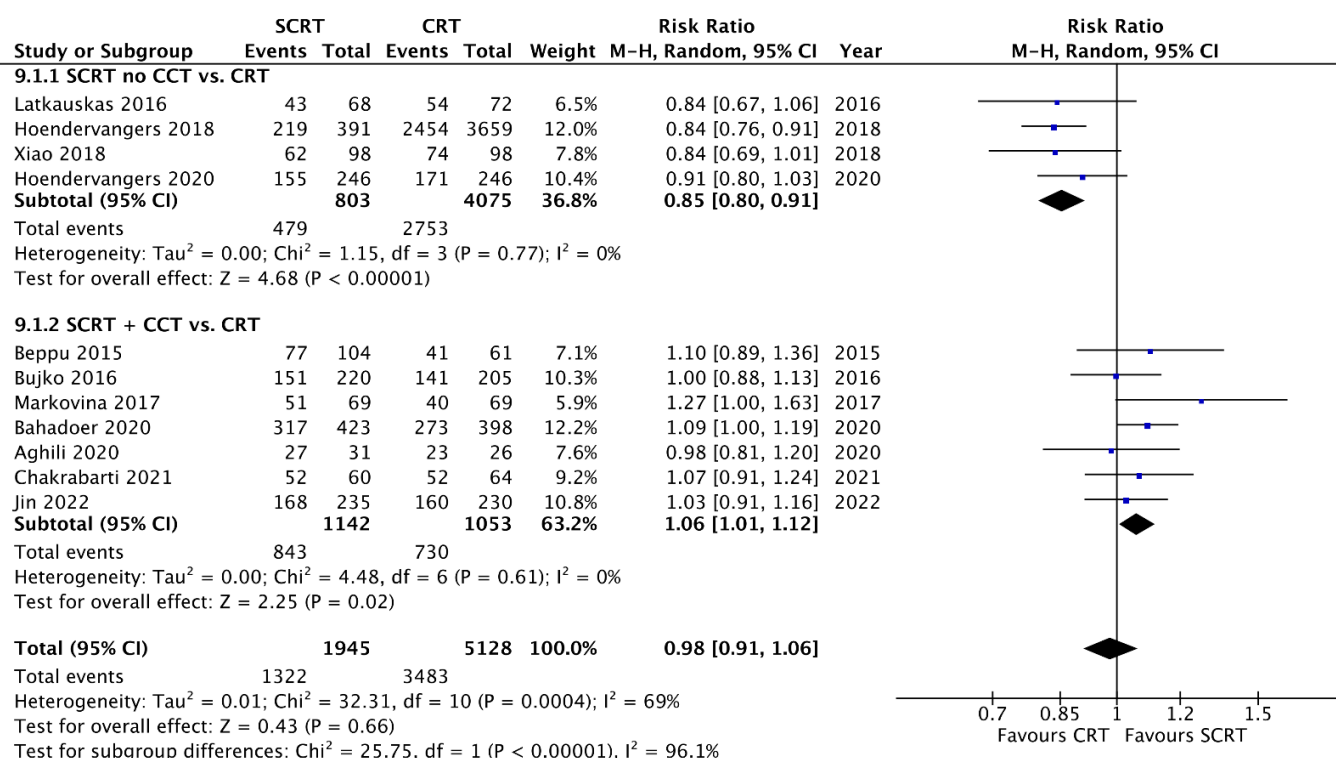


Figure S3. Forest plot of ypN0 rate after neoadjuvant treatment.

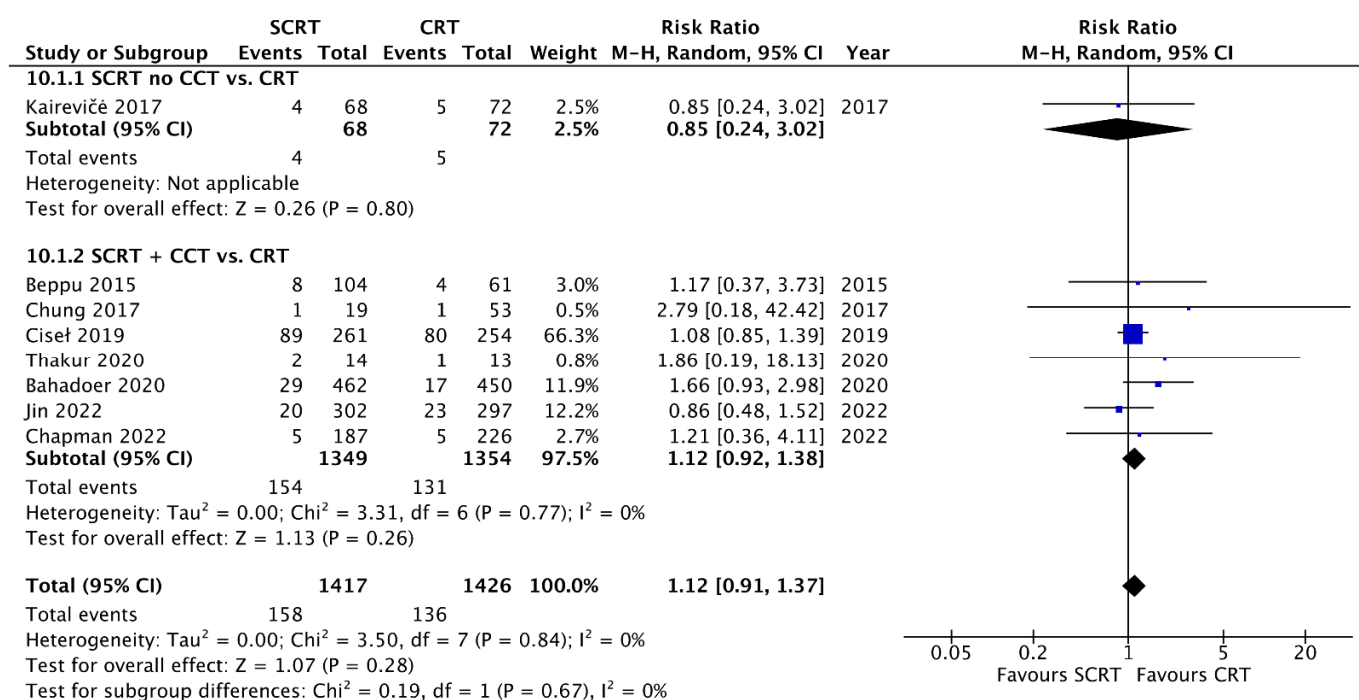


Figure S4. Forest plot of the rate of local recurrence.

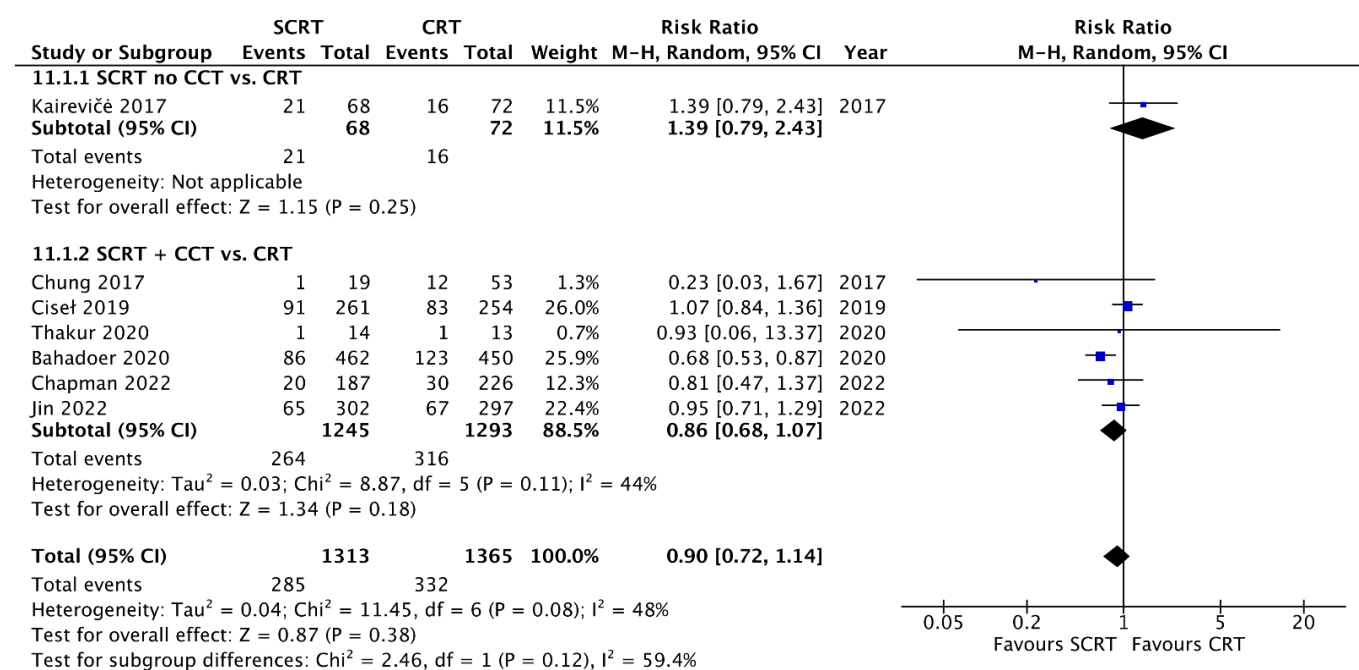


Figure S5. Forest plot of the rate of distant metastasis.

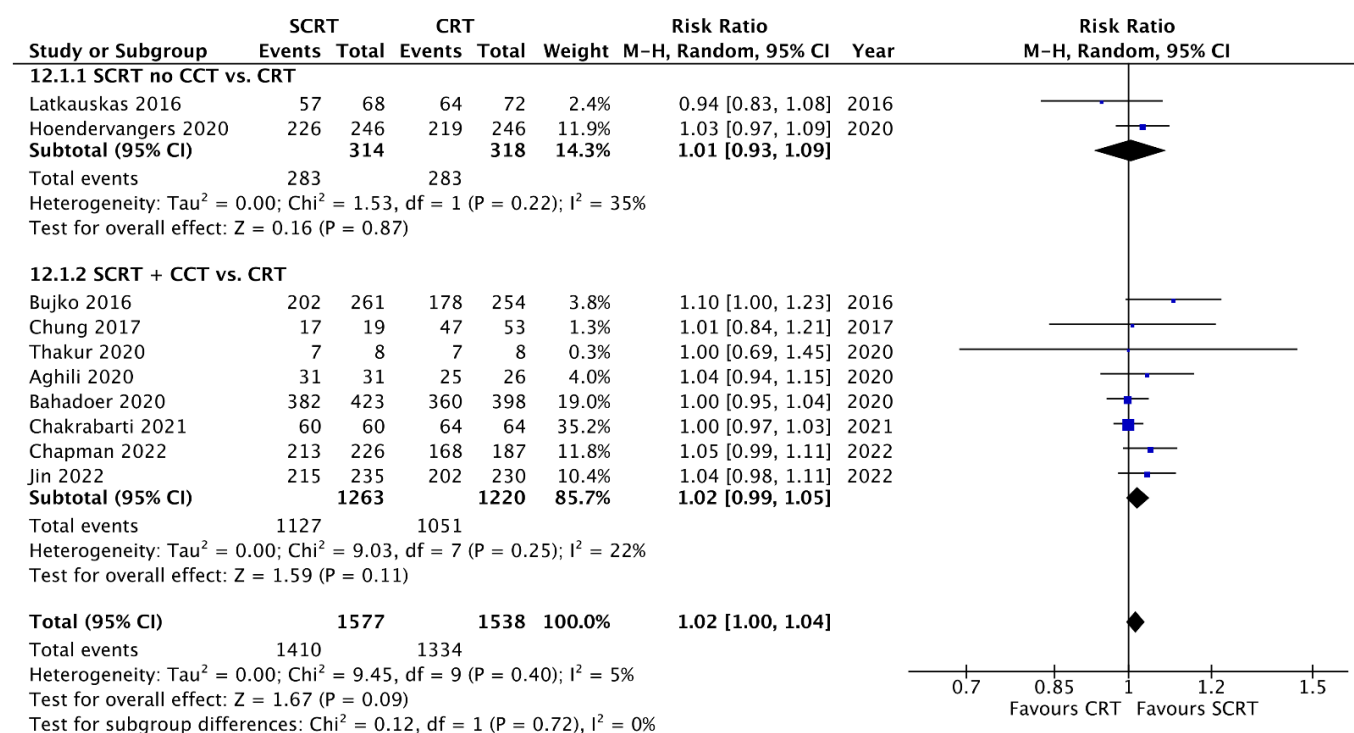


Figure S6. Forest plot of the R0 resection rate.

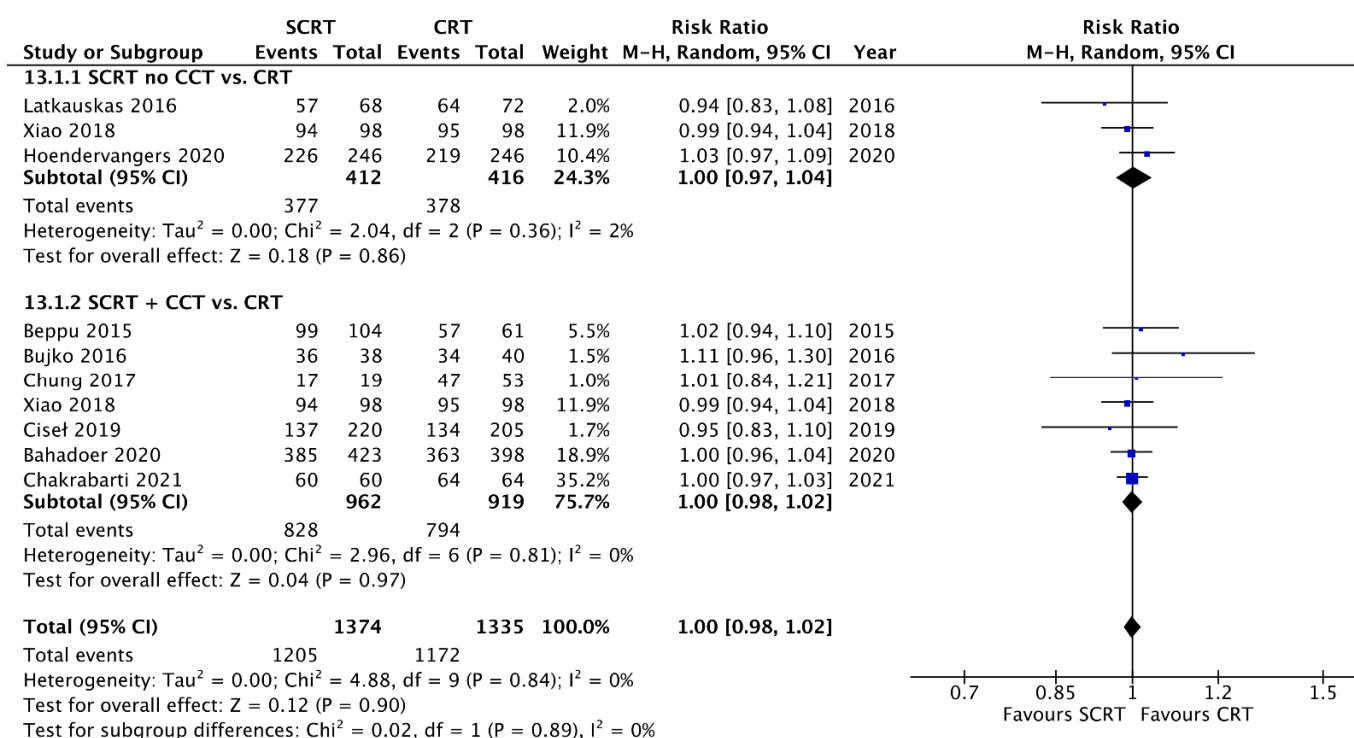


Figure S7. Forest plot of the negative circumferential resection margin (CRM) rate.

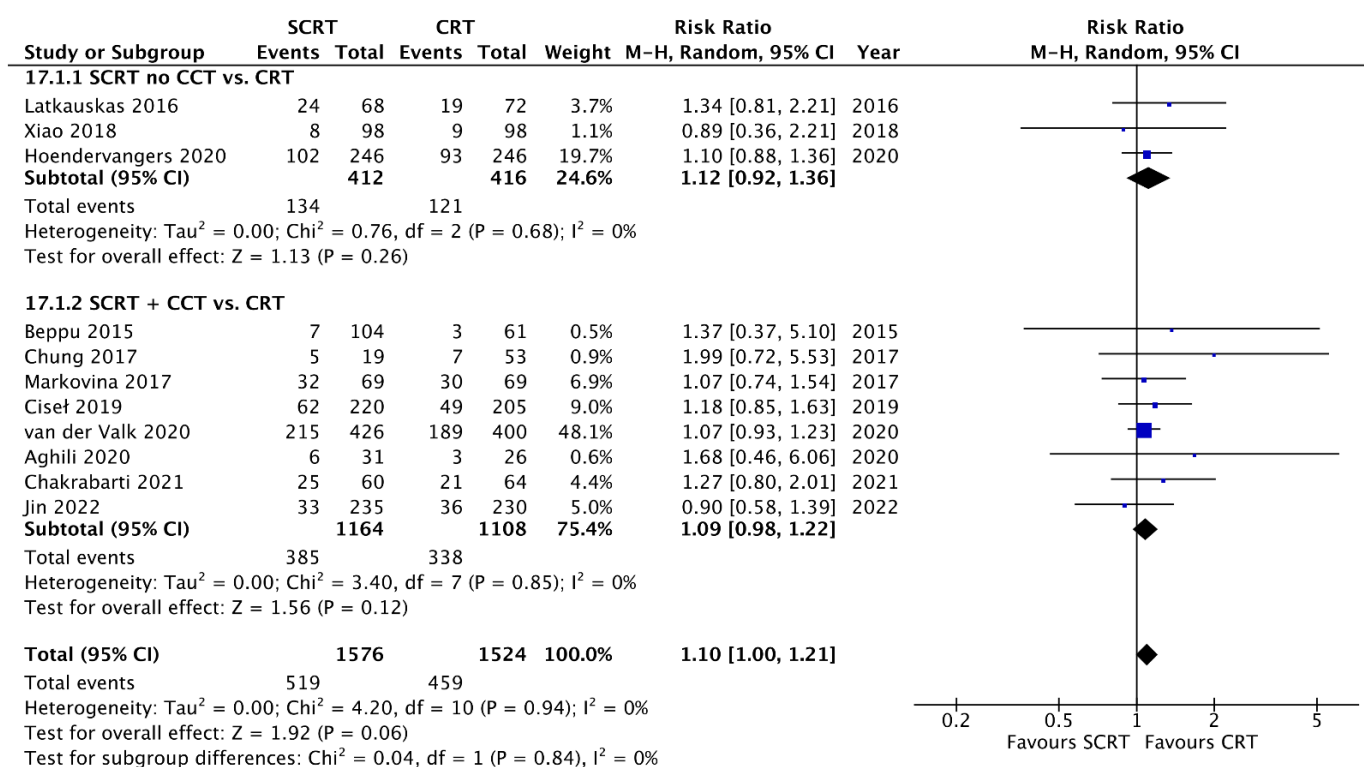


Figure S8. Forest plot for the rate of postoperative complications.

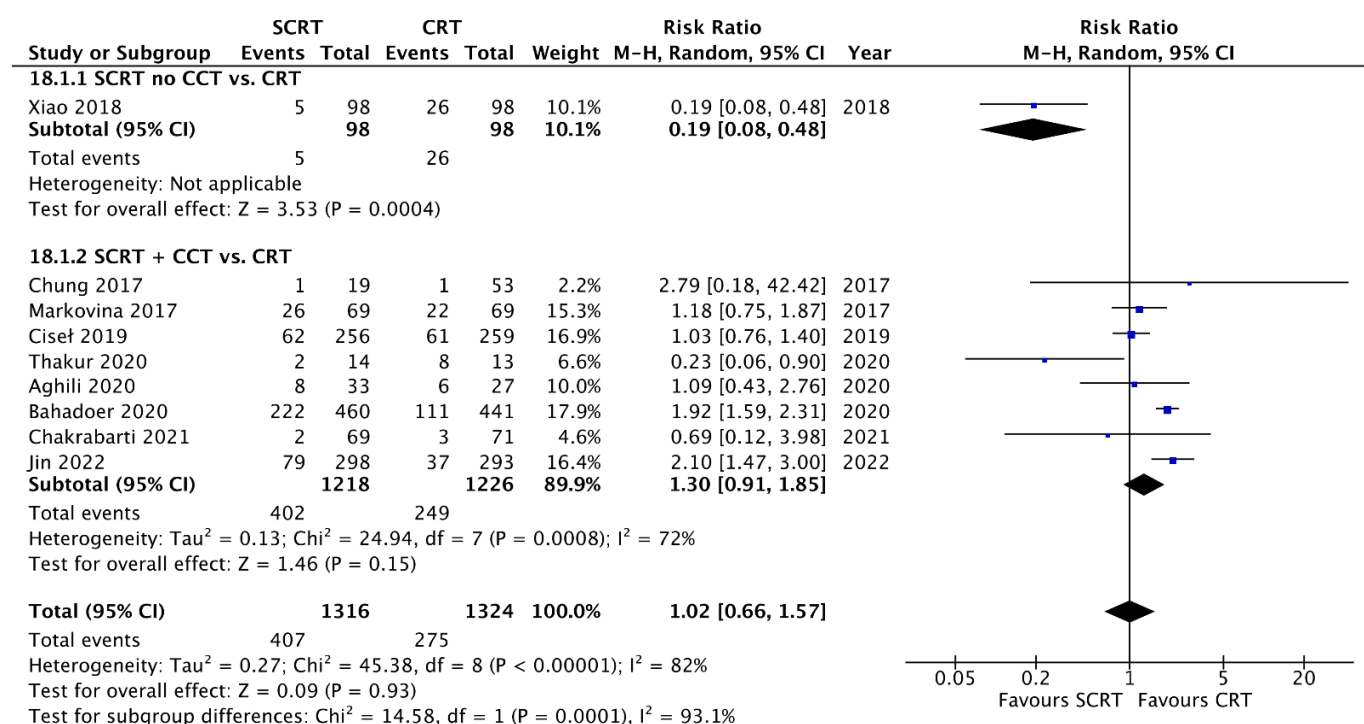
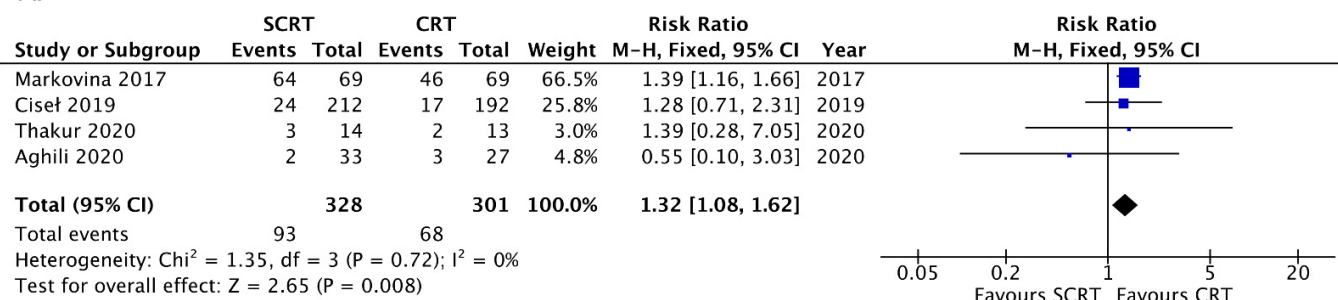


Figure S9. Forest plot of the rate of acute toxicity.

A.



B.

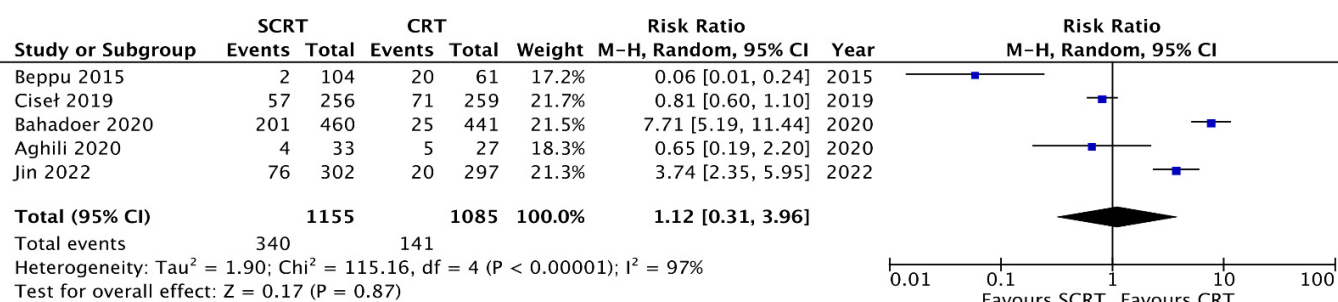


Figure S10. Forest plot of (A) the rate of late toxicity (B) the compliance of chemotherapy.