

Mechanical Resistance and Tissue Structure of Claw Denticles of Various Sizes in the Mud Crab, *Scylla serrata*

Tadanobu Inoue, Yuka Hara and Koji Nakazato

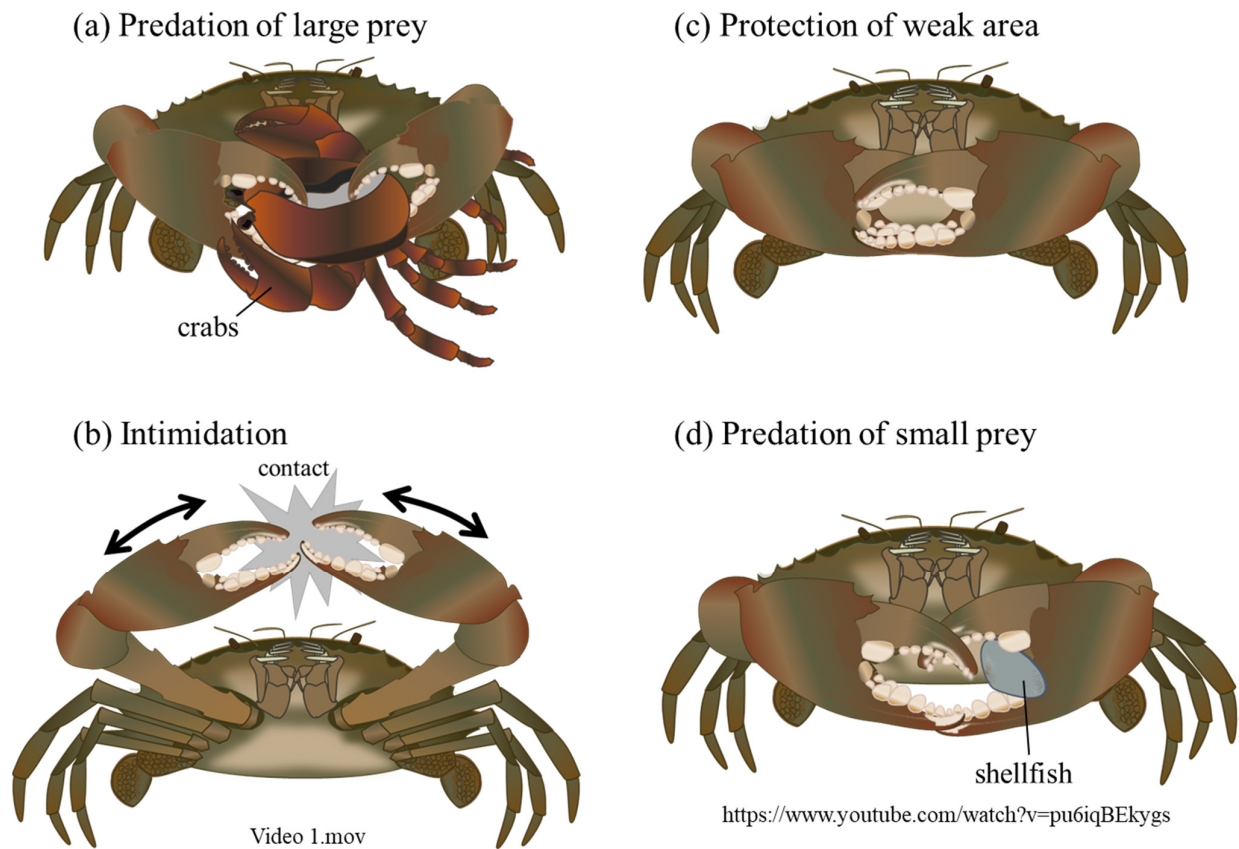


Figure S1. Schematic illustrations of predation, attack, and defense of the mud crab, *Scylla serrata*, which has huge claws comparable to its body size.

Video S1.mov. The mud crab's intimidation.