

# Ultrasensitive detection of malachite green isothiocyanate using nanoporous gold as SERS substrate

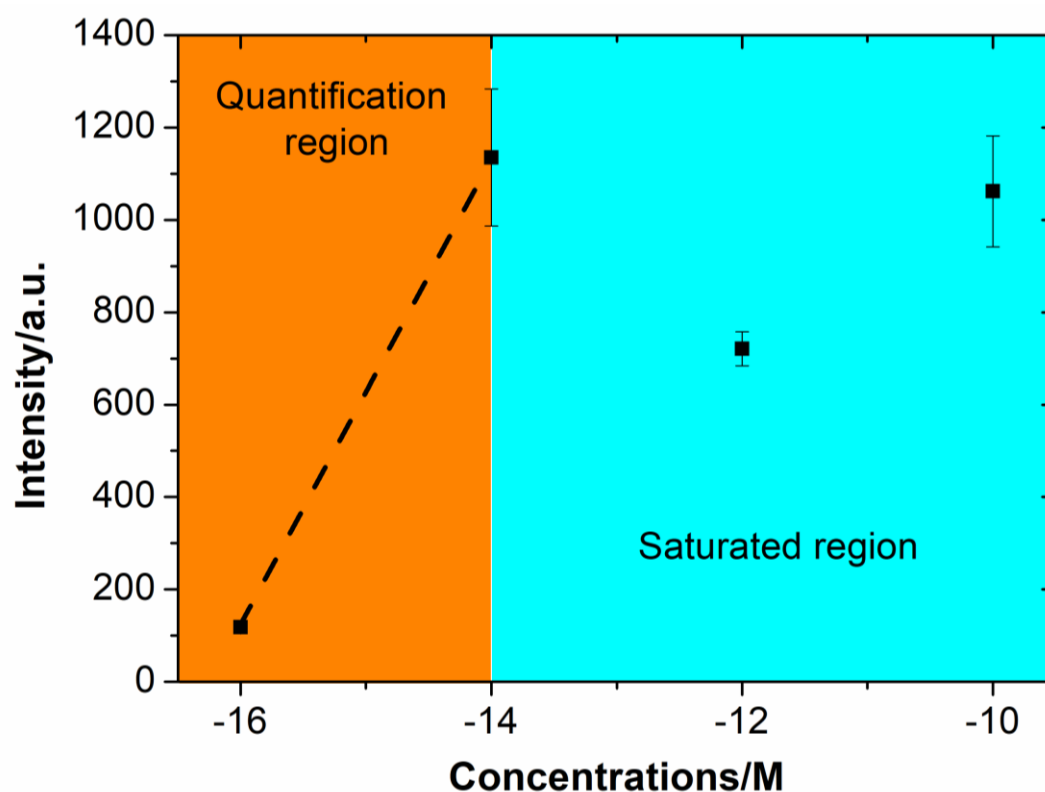
Deepti Raj<sup>a</sup>, Noor Tayyaba<sup>a</sup>, Ginevra De Vita<sup>a</sup>, Federico Scaglione<sup>a,\*</sup>, Paola Rizzi<sup>a</sup>

<sup>a</sup>Dipartimento di Chimica e Centro Interdipartimentale NIS (Nanostructured Surfaces and Interfaces), Università di Torino, Via Pietro Giuria 7, 10125, Torino.

\*Corresponding author: federico.scaglione@unito.it

## Supplementary materials

Figure S1



**Figure S1:** Intensity vs concentration plot: the graph is divided in two colored regions. In cyan the saturated region and in orange the quantification region. The dashed line is intended as a guide for the eyes.

Figure S2

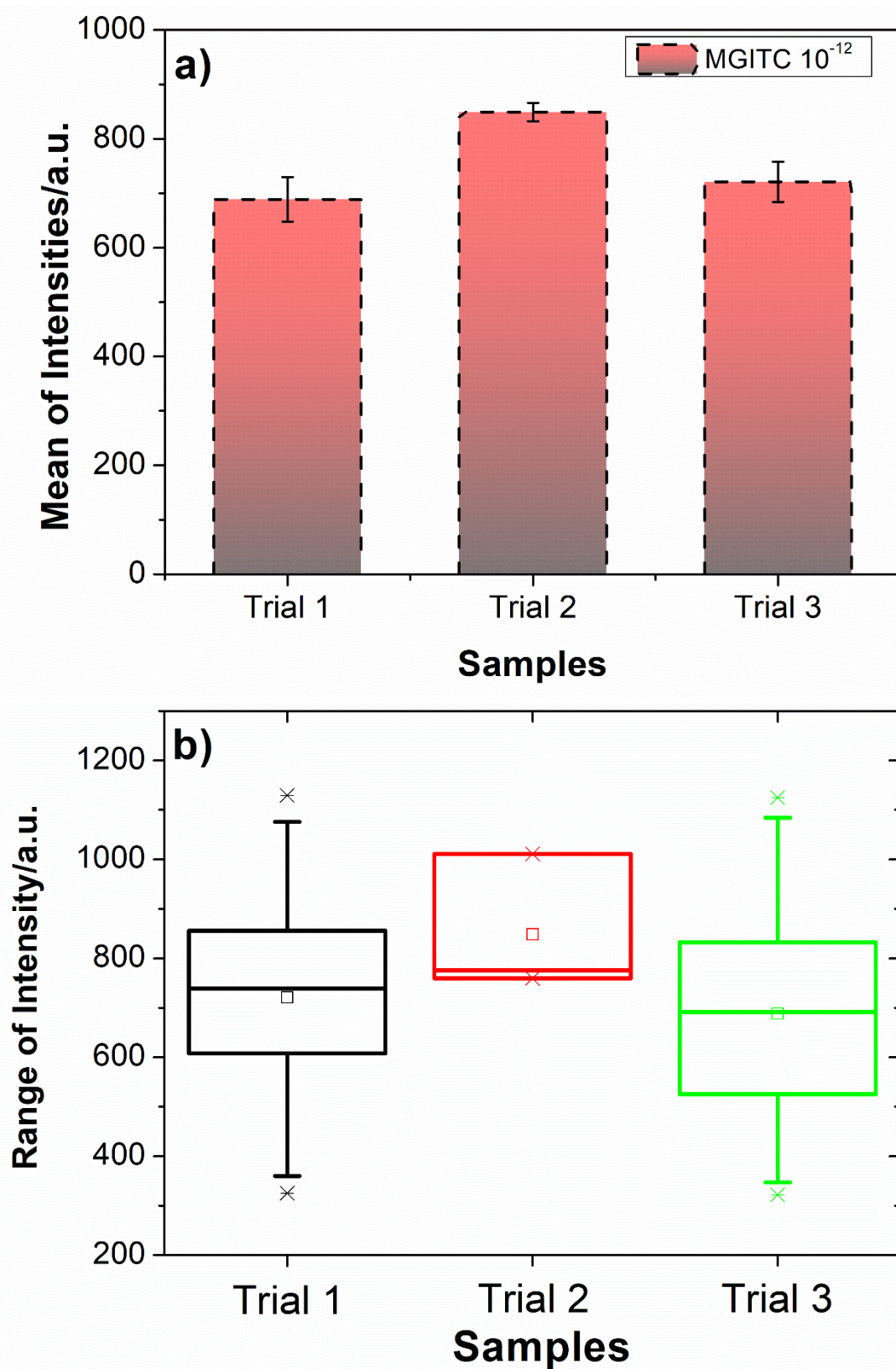


Figure S2: a) The mean  $\pm$  SE of intensities for the trials at the concentration of  $10^{-12}$  M; b) the ANOVA (Analysis of the Variance) plot for the three trials.