

Figure S1. Stability map of the correlation between oak LW and scPDSI from the previous year September until the current year October. Regions, where the correlation is stable, positive, and significant for at least 80% windows, are shaded with dark red (95%), red (90%), orange (85%), and yellow (80%). The corresponding regions where the correlation is stable, but negative, are shaded with dark blue (95%), blue (90%), green (85%), and light green (80%). SEP – September previous year, OCT - October previous year, NOV – November previous year, DEC – December previous year, Jan – January, Feb – February, Mar – March, Apr – April, May – May, Jun – June, Jul – July, Aug – August, Sep – September, Oct – October, MAM – March/April/May and JJA – June/July/August. Analyzed period: 1902–2018.

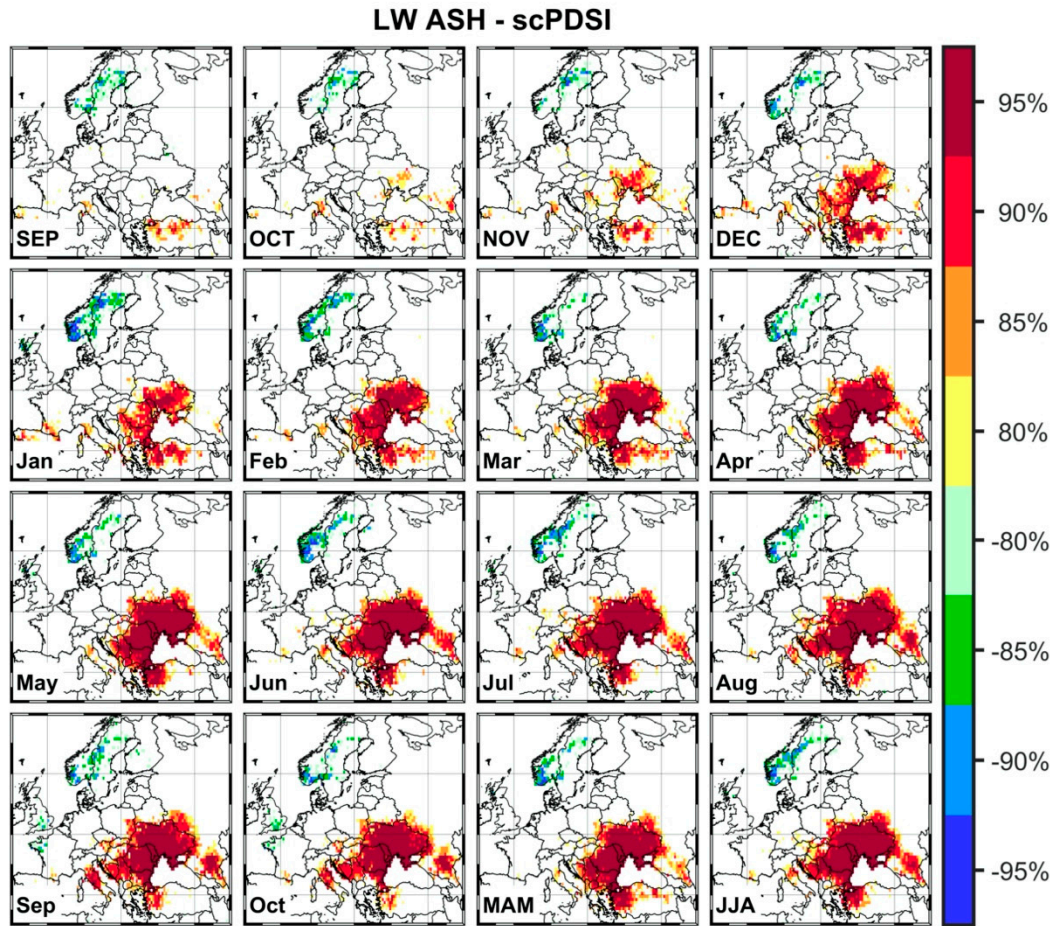


Figure S2. Stability map of the correlation between ash LW and scPDSI from the previous year September until the current year October. Regions, where the correlation is stable, positive, and significant for at least 80% windows, are shaded with dark red (95%), red (90%), orange (85%), and yellow (80%). The corresponding regions where the correlation is stable, but negative, are shaded with dark blue (95%), blue (90%), green (85%), and light green (80%). SEP – September previous year, OCT - October previous year, NOV – November previous year, DEC – December previous year, Jan – January, Feb – February, Mar – March, Apr – April, May – May, Jun – June, Jul – July, Aug – August, Sep – September, Oct – October, MAM – March/April/May and JJA – June/July/August. Analyzed period: 1902–2018.



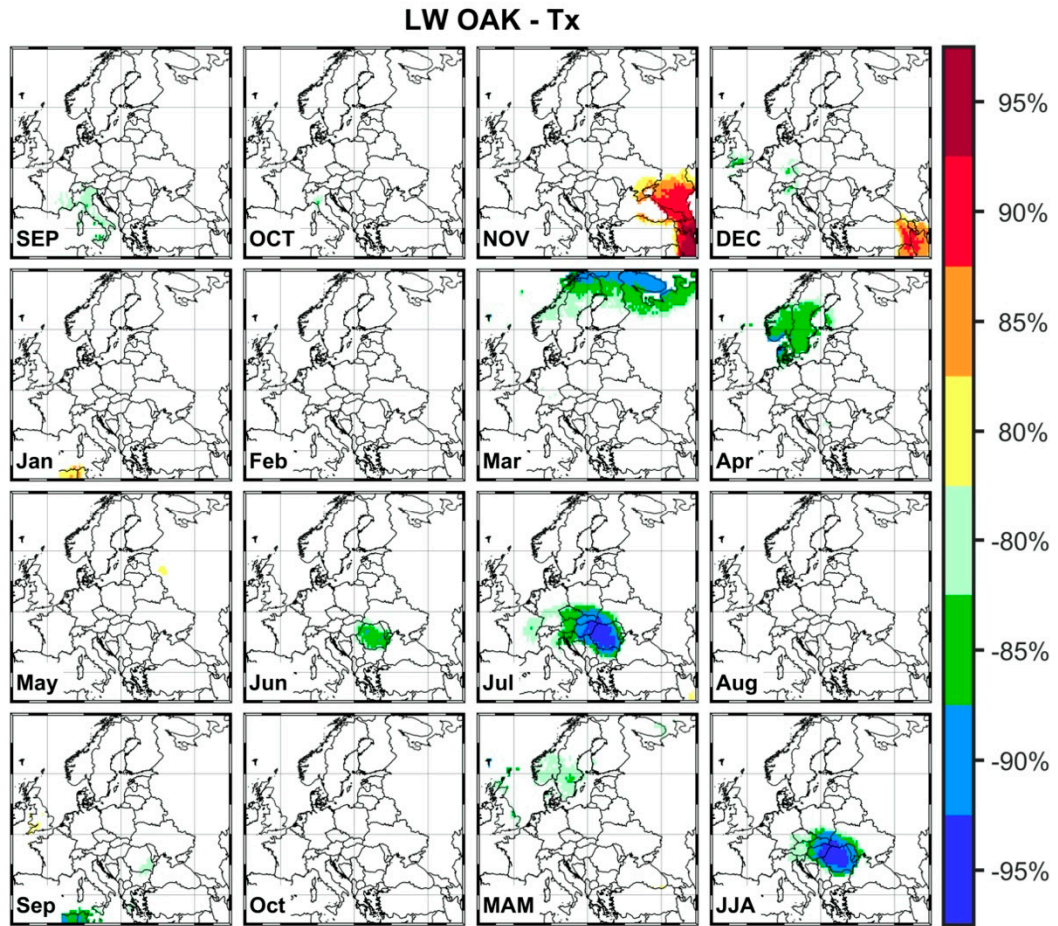


Figure S3. Stability map of the correlation between oak LW and Tmax from the previous year September until the current year October. Regions, where the correlation is stable, positive, and significant for at least 80% windows, are shaded with dark red (95%), red (90%), orange (85%), and yellow (80%). The corresponding regions where the correlation is stable, but negative, are shaded with dark blue (95%), blue (90%), green (85%), and light green (80%). SEP – September previous year, OCT - October previous year, NOV – November previous year, DEC – December previous year, Jan – January, Feb – February, Mar – March, Apr – April, May – May, Jun – June, Jul – July, Aug – August, Sep – September, Oct – October, MAM – March/April/May and JJA – June/July/August. Analyzed period: 1902–2018.

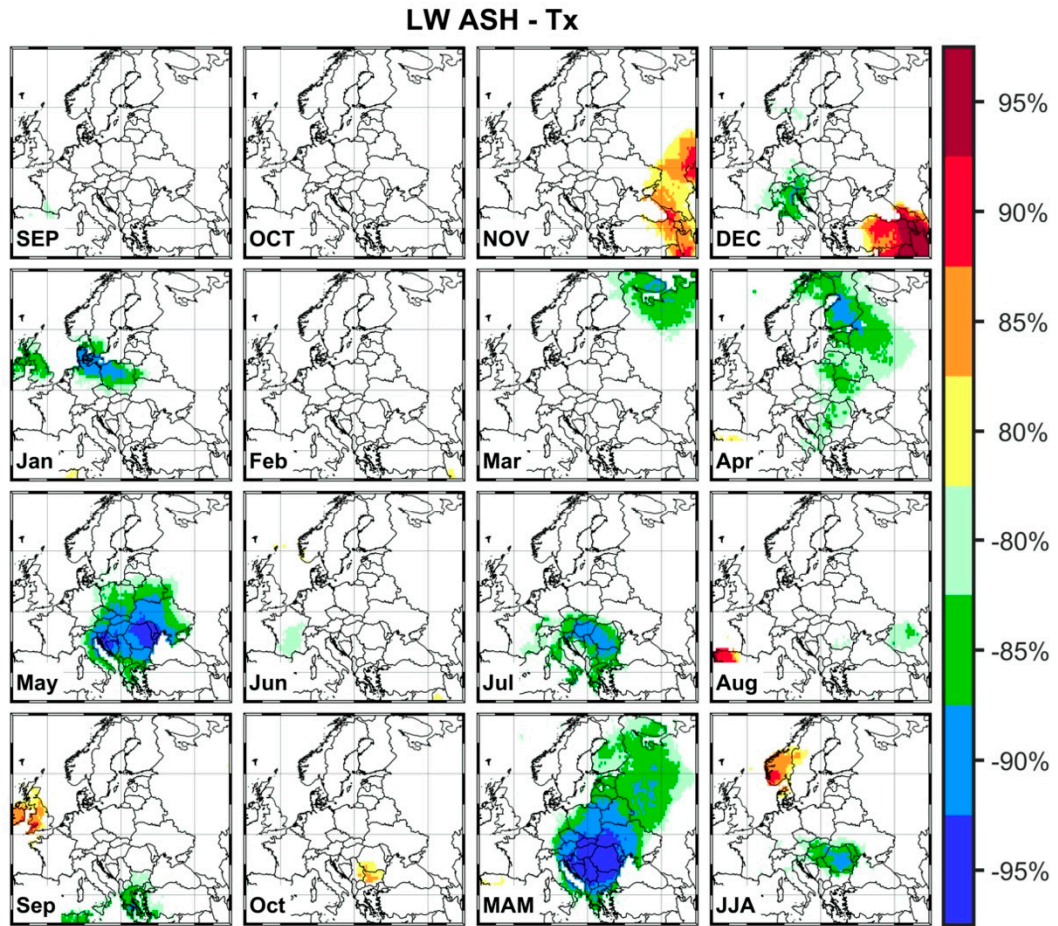


Figure S4. Stability map of the correlation between ash LW and Tmax from the previous year September until the current year October. Regions, where the correlation is stable, positive, and significant for at least 80% windows, are shaded with dark red (95%), red (90%), orange (85%), and yellow (80%). The corresponding regions where the correlation is stable, but negative, are shaded with dark blue (95%), blue (90%), green (85%), and light green (80%). SEP – September previous year, OCT - October previous year, NOV – November previous year, DEC – December previous year, Jan – January, Feb – February, Mar – March, Apr – April, May – May, Jun – June, Jul – July, Aug – August, Sep – September, Oct – October, MAM – March/April/May and JJA – June/July/August. Analyzed period: 1902–2018.