

## Supplementary material

# Resin canal traits variation in *Pinus* spp. with different susceptibility to the pine wood nematode

Aida Rodríguez-García, Juan A. Martín, Luis Gil, María Menéndez-Gutiérrez and Raquel Díaz

### Tables:

**Table S1.** Height and basal diameter of the experimental seedlings (mean  $\pm$  SE).

**Table S2.** Median number of nematodes per gram of dry weight recovered from roots (NDR), stem (NDs) and total seedling (NDt) at 42 days after inoculation. Within each column, different letters denote significant differences between pine species (Kruskal-Wallis test,  $p < 0.05$ ,  $N = 8$ ).

### Figures:

**Figure S1.** Constitutive anatomical traits showing differences between susceptibility groups: a) xylem growth, b) canal size in xylem, c) canal size in the cortex, and d) canal frequency in the cortex. Different letters denote significant differences between pine species ( $P < 0.05$ ). A = *P. pinea*; C = *P. canariensis*; H = *P. halepensis*; T = *P. taeda*; P = *P. pinaster*; R = *P. radiata* and S = *P. sylvestris*.

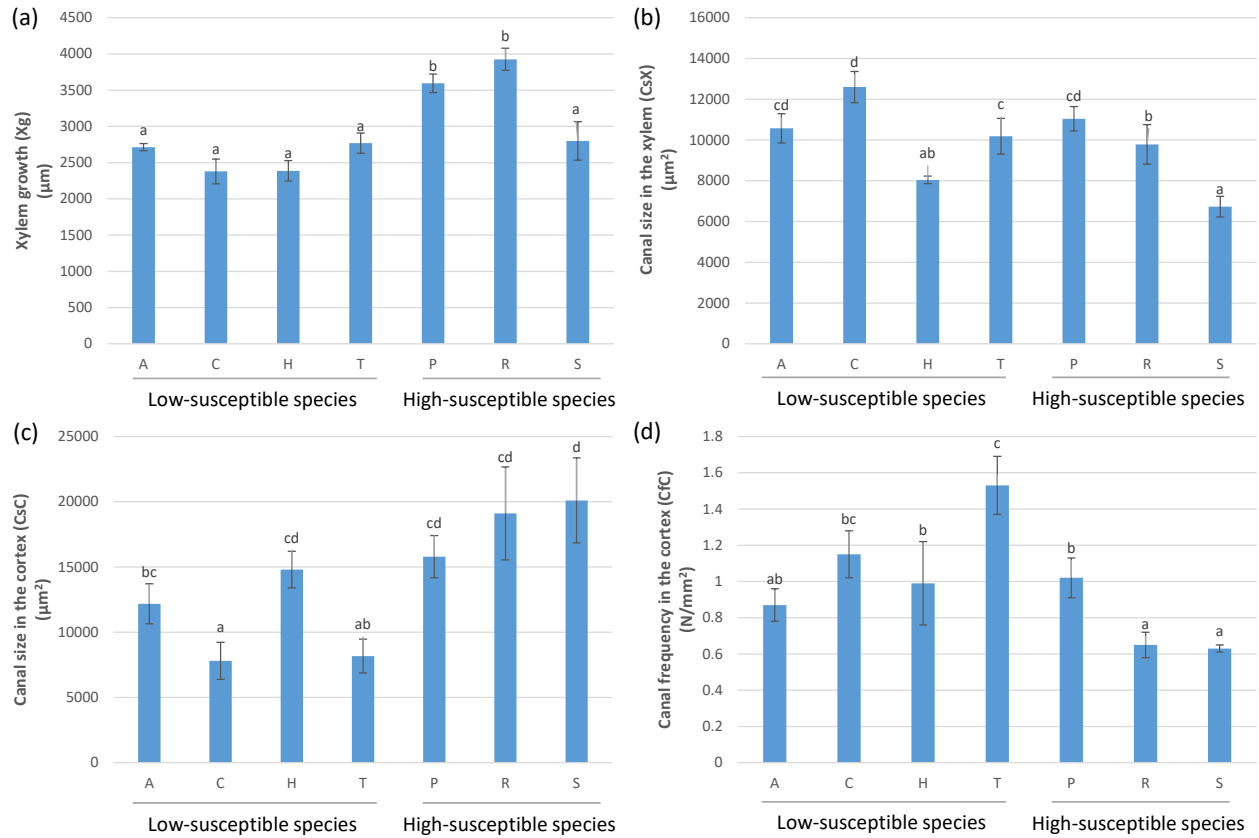
**Figure S2.** Changes in foliage symptoms shown by high-susceptible species after 3 and 41 days after inoculation (DAI) with the pine wood nematode. No significant changes were observed in low-susceptible species.

**Table S1.** Height and basal diameter of the experimental seedlings (mean  $\pm$  SE).

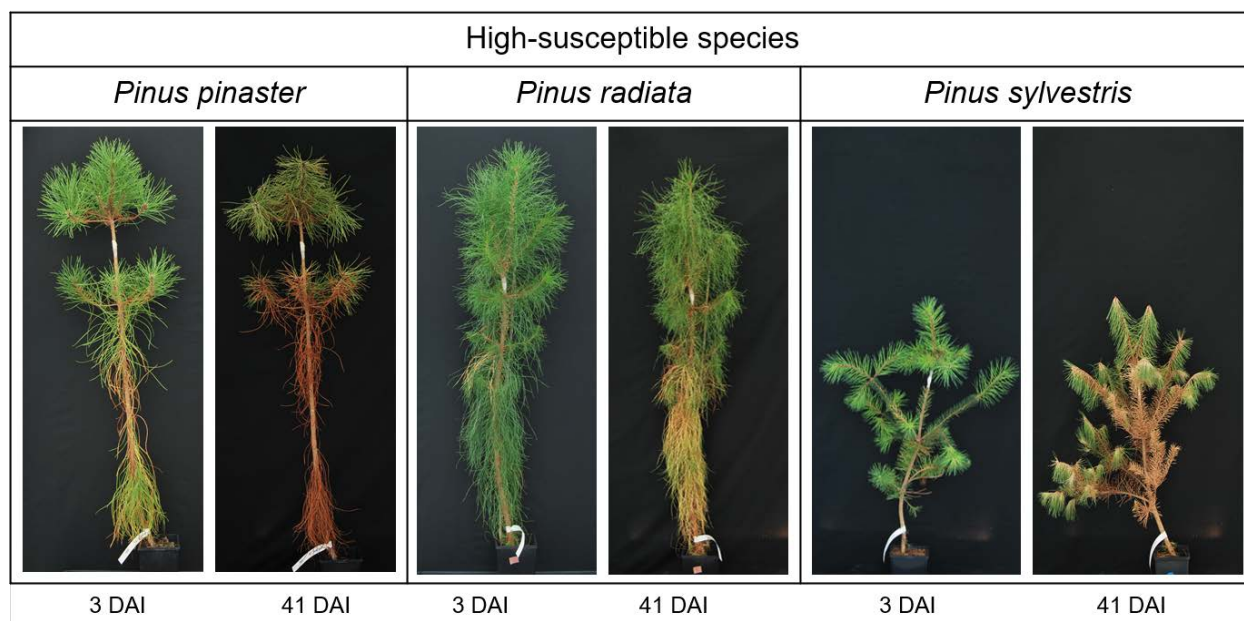
<b>Species</b>	<b>Height (cm)</b>	<b>Diameter (mm)</b>
<i>P. canariensis</i>	94.08 $\pm$ 2.77	12.35 $\pm$ 0.68
<i>P. halepensis</i>	91.83 $\pm$ 1.89	11.93 $\pm$ 0.35
<i>P. pinea</i>	83.08 $\pm$ 3.23	14.63 $\pm$ 0.31
<i>P. tadea</i>	102.83 $\pm$ 2.36	14.91 $\pm$ 0.73
<i>P. pinaster</i>	106.75 $\pm$ 2.82	15.36 $\pm$ 0.93
<i>P. radiata</i>	138.08 $\pm$ 3.04	18.03 $\pm$ 0.66
<i>P. sylvestris</i>	68.83 $\pm$ 2.38	15.10 $\pm$ 0.78

**Table S2.** Median number of nematodes per gram of dry weight recovered from roots (NDr), stem (NDs) and total seedling (NDt) at 42 days after inoculation. Within each column, different letters denote significant differences between pine species (Kruskal-Wallis test,  $p < 0.05$ ,  $N = 8$ ).

Group	Species	NDr	NDs	NDt
Low susceptible	<i>P. canariensis</i>	0.00 c	0.05 b	0.03 bc
	<i>P. halepensis</i>	0.00 c	0.00 c	0.00 c
	<i>P. pinea</i>	0.00 bc	0.25 ab	0.18 b
	<i>P. taeda</i>	0.00 bc	0.96 ab	0.73 ab
High susceptible	<i>P. pinaster</i>	0.00 bc	0.15 ab	0.28 ab
	<i>P. radiata</i>	1.75 ab	0.39 ab	3.01 a
	<i>P. sylvestris</i>	8.71 a	0.59 a	3.02 a



**Figure S1.** Constitutive anatomical traits showing differences between susceptibility groups: a) xylem growth, b) canal size in the xylem, c) canal size in the cortex, and d) canal frequency in the cortex. Different letters denote significant differences between pine species ( $P < 0.05$ ). A = *P. pinea*; C = *P. canariensis*; H = *P. halepensis*; T = *P. taeda*; P = *P. pinaster*; R = *P. radiata* and S = *P. sylvestris*.



**Figure S2.** Changes in foliage symptoms shown by high-susceptible species after 3 and 41 days after inoculation (DAI) with the pine wood nematode. No significant changes were observed in low-susceptible species.