

Supporting information:

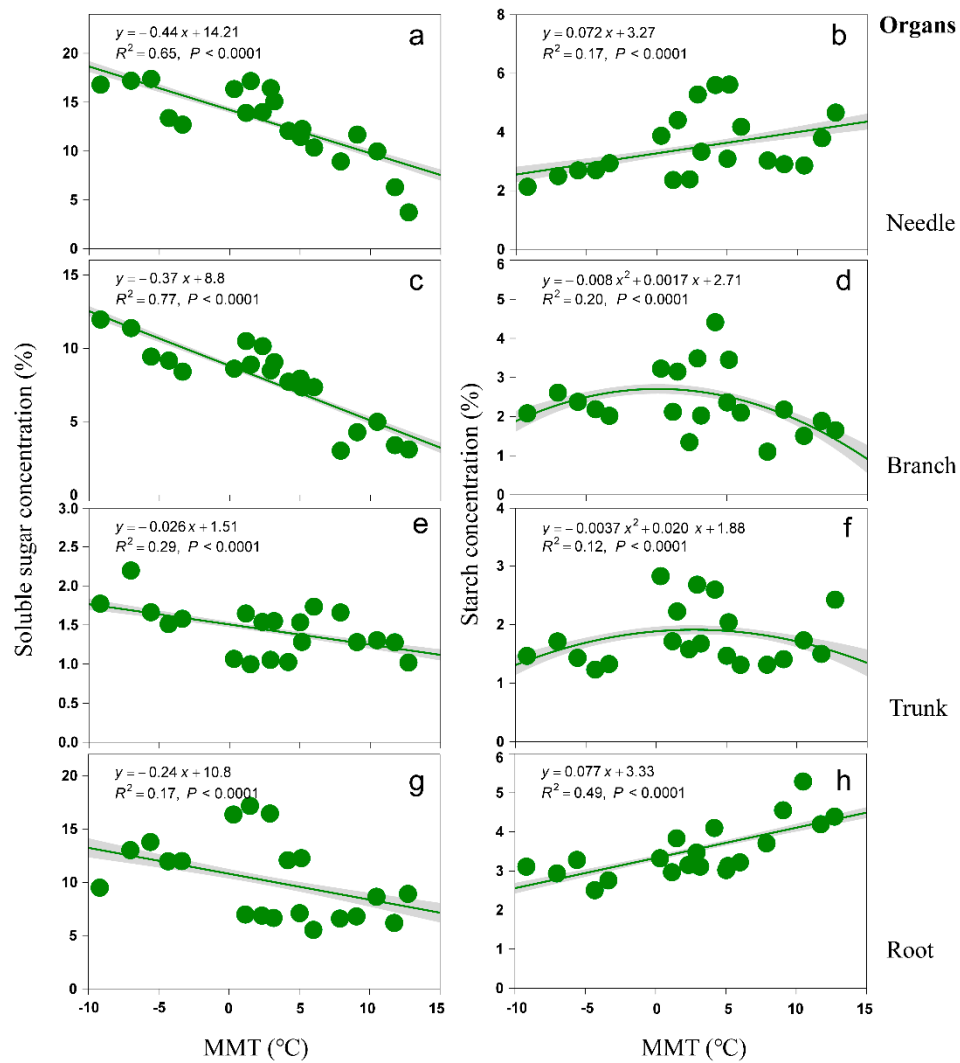


Figure S1. The linear relationships of soluble sugar and starch concentration of Faxon fir organs with mean monthly temperature (MMT). Solid lines indicate a significant relationship. Each point is a mean value (n=6).

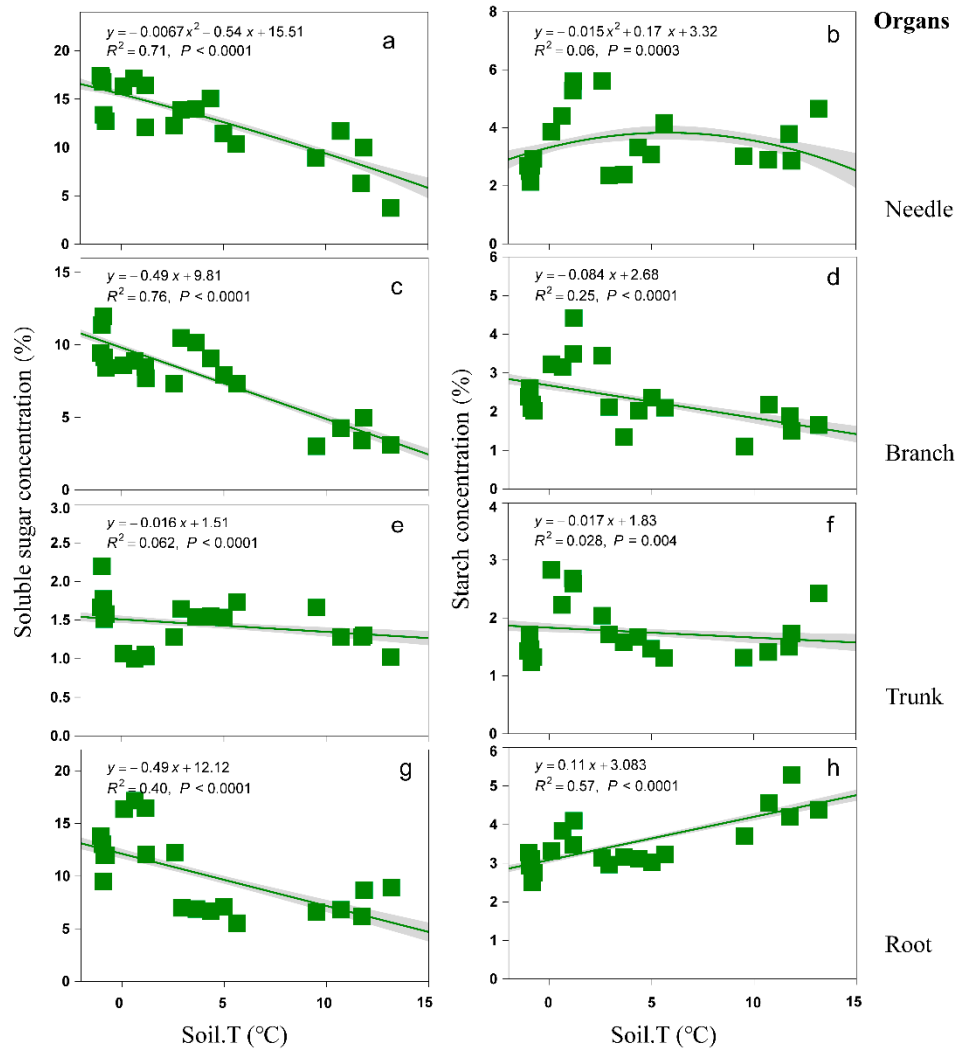


Figure S2. Correlations between soluble sugar and starch concentration of Faxon fir organs with Soil temperature. Each point is a mean value.

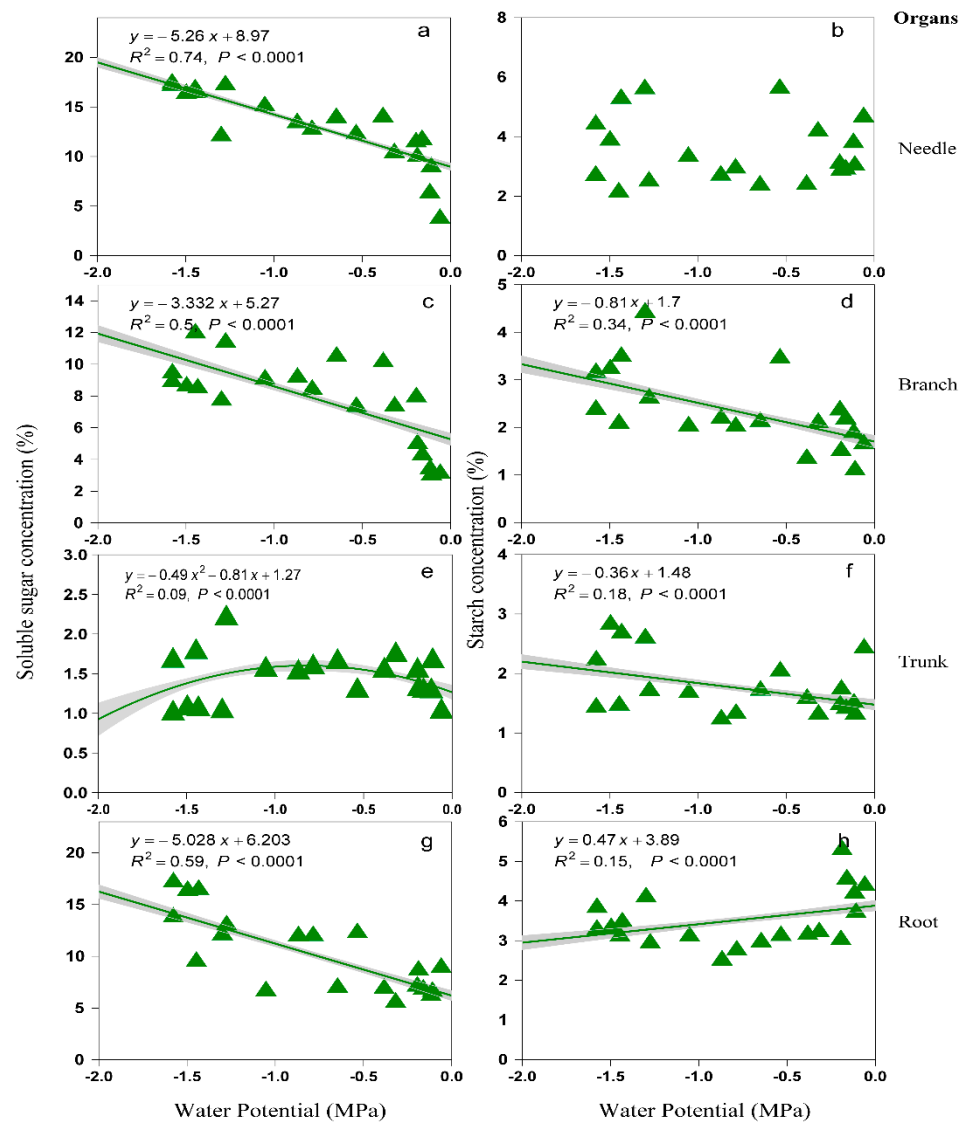


Figure S3. Correlations between soluble sugar and starch concentration of Faxon fir organs with Pre-dawn leaf water potential. Each point is a mean value.

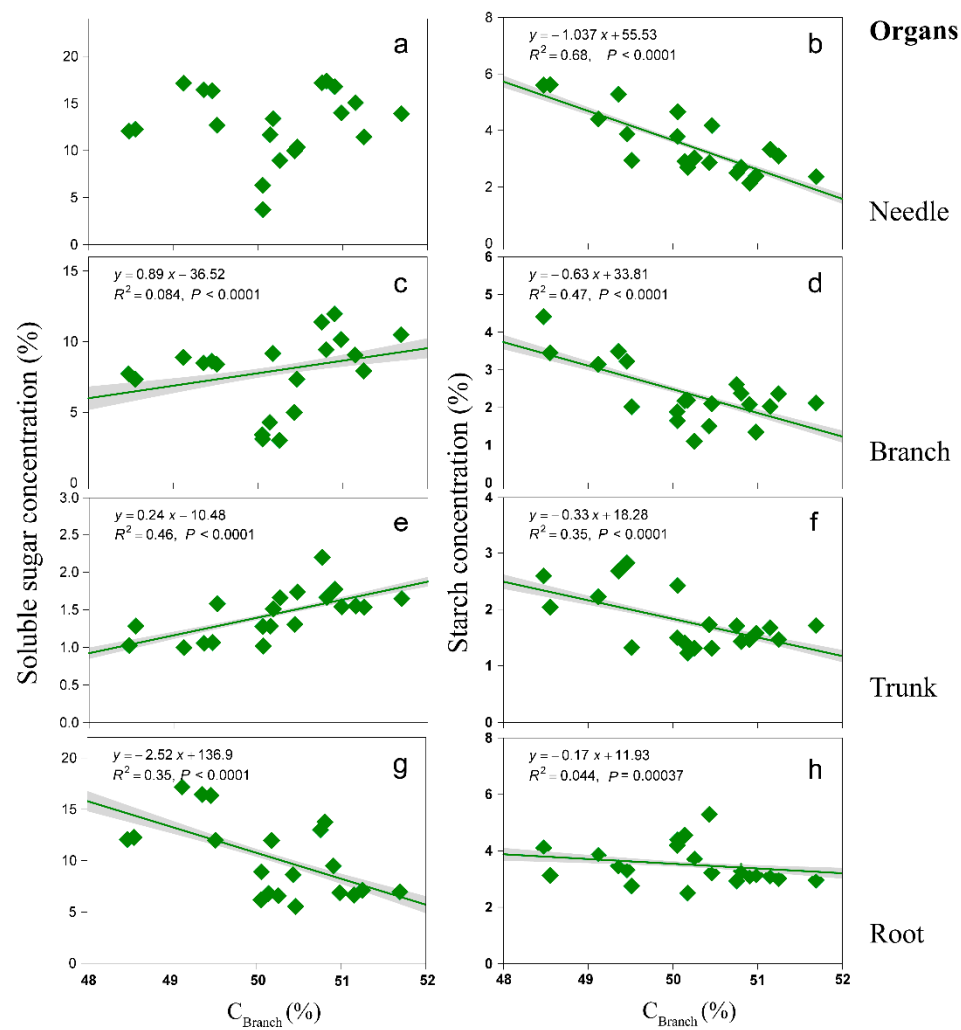


Figure S4. The linear relationship of soluble sugar and starch concentration of Faxon fir with needle carbon content. C_{Branch} : needle carbon content. Each point is a mean value.

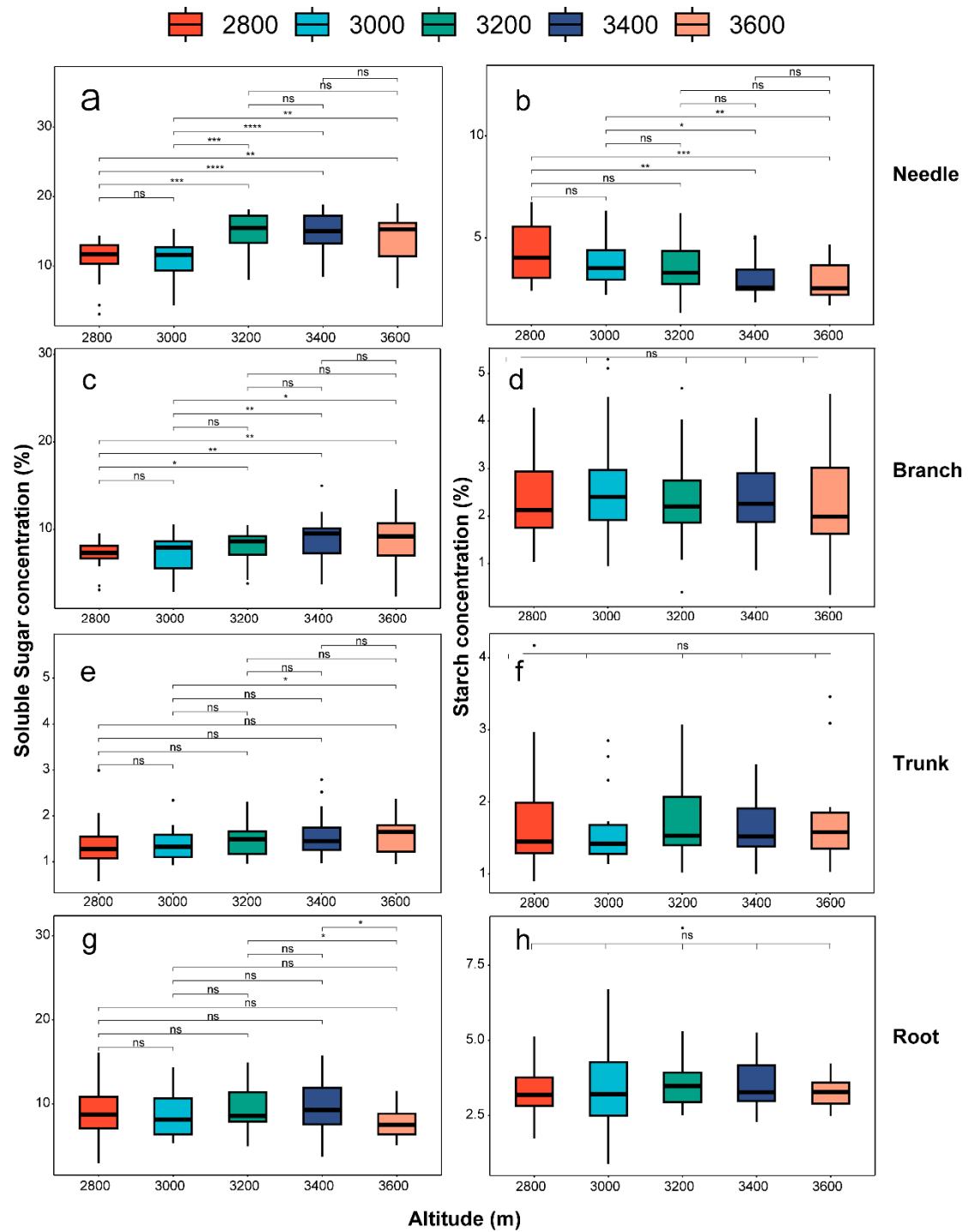


Figure S5. One-way analysis of variance of Faxon Fir organ's (Needle, a b; Branch, c d; Trunk, e f; Root, g h) soluble sugar and starch concentration among five study sites. “*” means significant difference; “ns” means no difference.