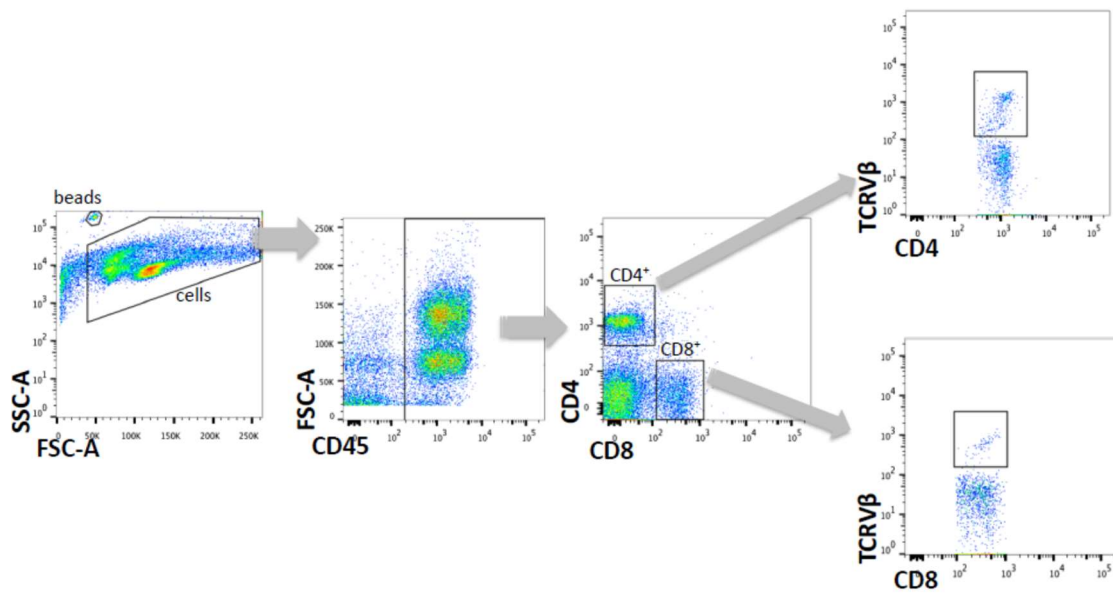


Supplementary Figure 1



**Figure S1.** Gating strategy to determine the frequency of each TCRV $\beta$  for hRSV-induced T cells. Spleen and lungs from infected mice were stained and evaluated by flow cytometry. Dot plots of gating strategy are shown. CD45<sup>+</sup> cells were gated and then the positive cells for CD4<sup>+</sup> and CD8<sup>+</sup> T cells were selected. Finally, over the CD4<sup>+</sup> and CD8<sup>+</sup> T cells gating, we selected the positive cells for each respective TCRV $\beta$ .