

Supplemental material

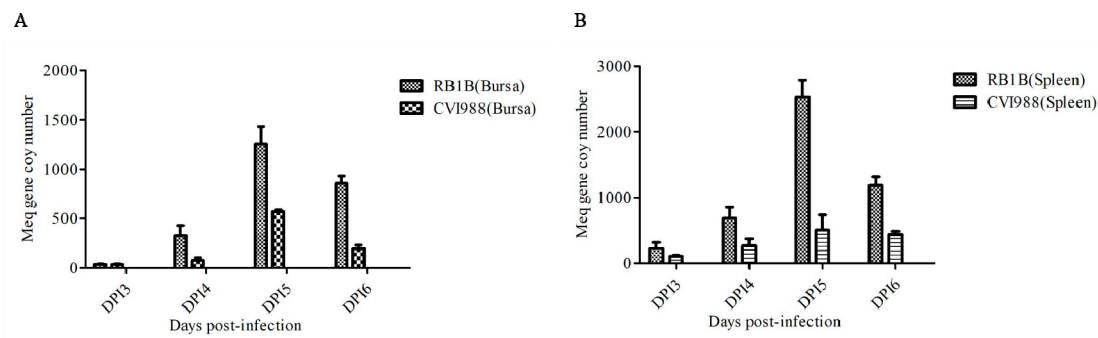


Figure S1 Replication of vvRB1B and CVI988 virus in splenic and bursal lymphocytes at different days of post-infection (dpi). A. The viral genome load in vvRB1B and CVI988 infected bursal lymphocytes. B. The viral genome load in vvRB1B and CVI988 infected splenic lymphocytes.

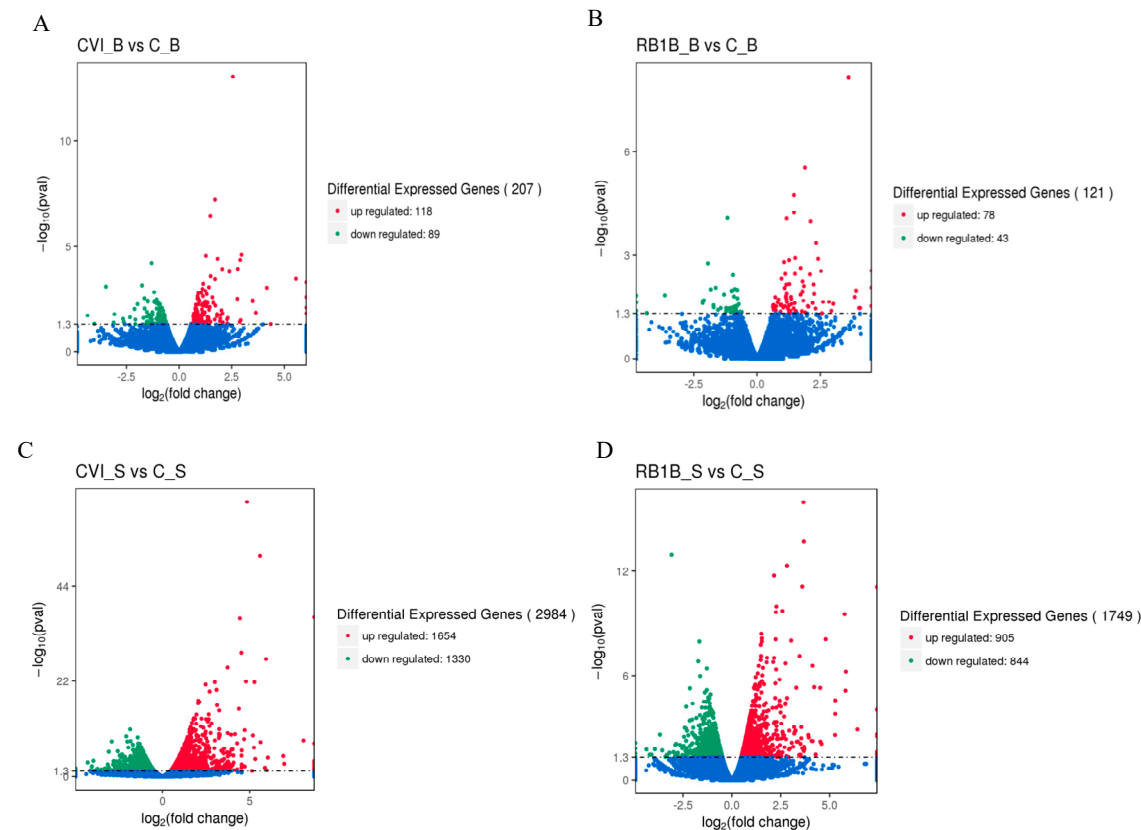


Figure S2 The overall distribution of differentially expressed genes of splenic and bursal lymphocytes demonstrated by the Volcano plot. Three individuals in each group were used for identifying DEGs. A. The expression of DEGs in bursal lymphocytes between CVI988 group and control group. B. The comparison of DGEs of bursal lymphocytes between the vvRB1B group and the control group. C. The expression of DEGs in splenic lymphocytes between CVI988 group and control group. B. The comparison of DGEs of splenic lymphocytes between the vvRB1B group and the control group. (The statistical criteria are $p < 0.05$ and $|\log_2 \text{fold change}| > 1$)

Table S1 Number of differentially expressed genes of splenic and bursa lymphocytes at dpi5.

Group Criteria	C_B VS CVI_B(DPI5)	C_B VS RB1B_B(DPI5)	C_S VS CVI_S(DPI5)	C_S VS RB1B_S(DPI5)
p<0.05 FC >1	Up : 118 Down : 89	Up : 78 Down : 43	Up : 1654 Down : 1330	Up : 905 Down : 844
p<0.05 FC >1.5	Up : 36 Down : 22	Up : 36 Down : 11	Up : 408 Down : 226	Up : 189 Down : 124
p<0.05 FC >2	Up : 24 Down : 11	Up : 24 Down : 5	Up : 252 Down : 103	Up : 117 Down : 57

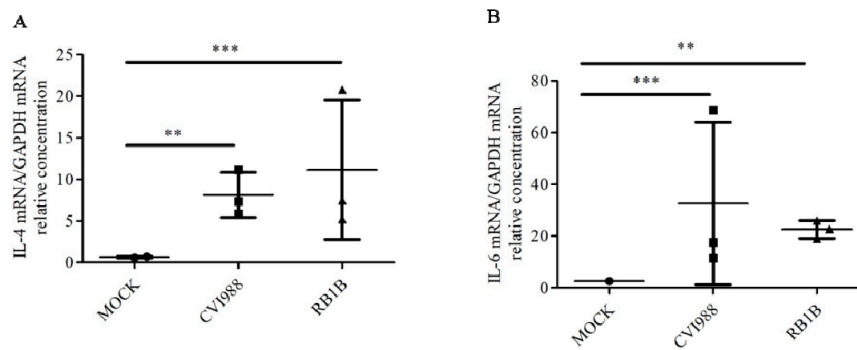


Figure S3 Profile of gene expression in bursal lymphocytes in CVI988, vvRB1B, and the control groups. The relative gene expression of IL-4 and IL-6 in CVI988, vvRB1B treated and control group bursal lymphocytes.