

Supplementary Materials: Figure S1 and S2

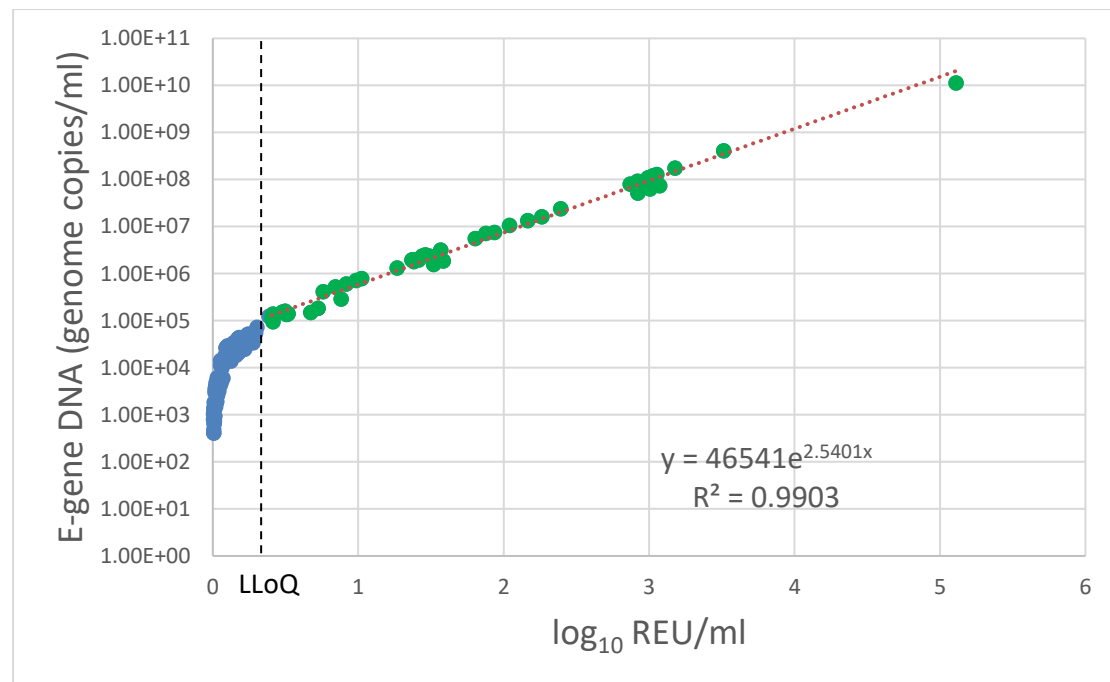
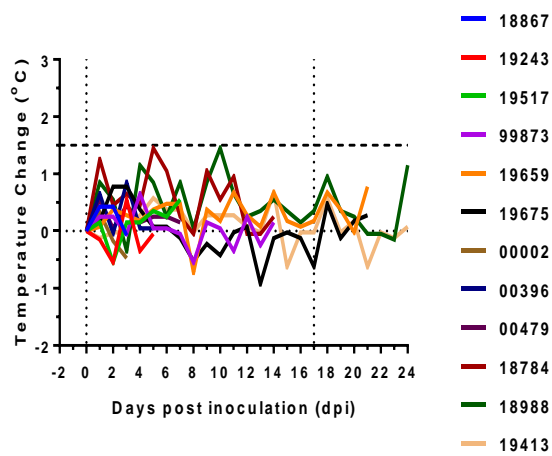


Figure S1. Real-time RT-qPCR quantification. Relative Equivalent units (REU) were calculated for a ten-fold dilution series of RNA extracted from a SARS-CoV-2/Australia/VIC01/2020 stock of known titre (\log_{10} TCID₅₀/ml). REU values showed good correlation with the SARS-CoV-2 E gene DNA quantification standard (genome copies). The lower limit of quantification (LLoQ) for the assay is 0.4 \log_{10} REU or approximately 1×10^5 genome copies/ml. The graph shows the results of five independent assays.

a



b

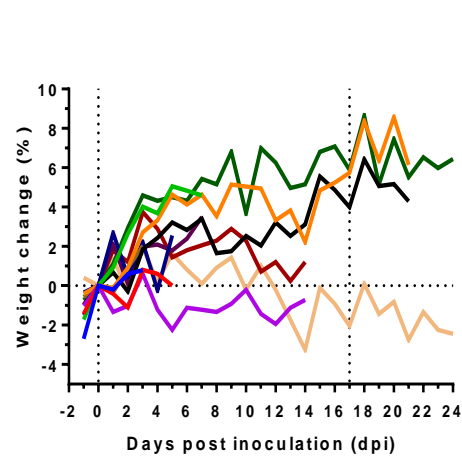


Figure S2. Clinical data for daily temperature and weight monitoring. Recorded (a) temperature (°C), as an absolute change from baseline during the acclimatization period and (b) weight, as a percentage change from baseline at time of inoculation. Parameters remained within the normal range and did not exceed the mild limit for any clinical signs including temperature (+1.5°C increase from baseline) or weight (10% decrease in weight from 0dpi) for the duration of the study.