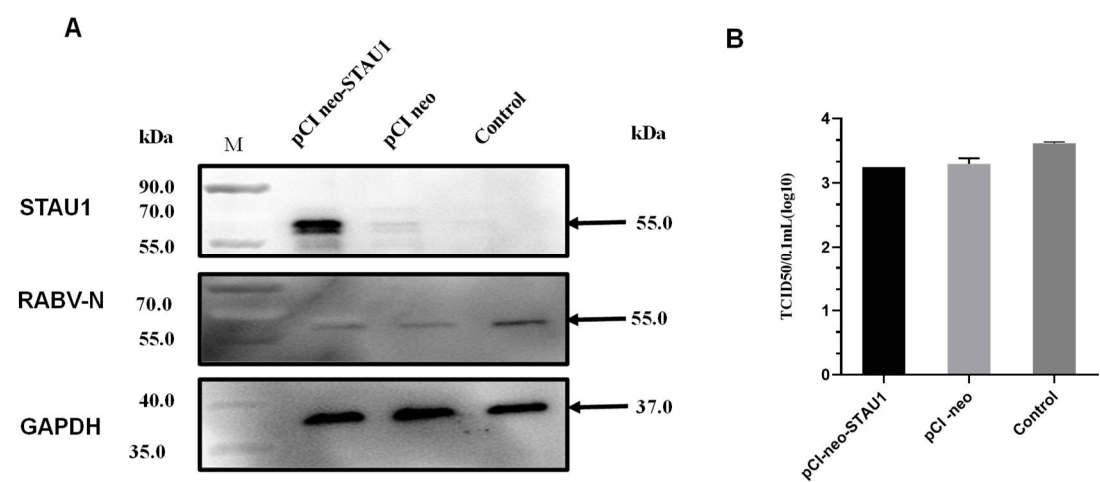


Figure S1. The effect of STAU1 overexpression on the replication on RABV.



FigureS1. **(A)** Western blot confirmation of cells that overexpress STAU1 and were infected with RABV. **(B)** TCID₅₀ detection of RABV after cells upregulate STAU1.

Figure S2. Subcellular distribution of Negri body-like structures formed in RABV-infected LV-shRNA-iSTAU1/LV-shRNA-iC cells.

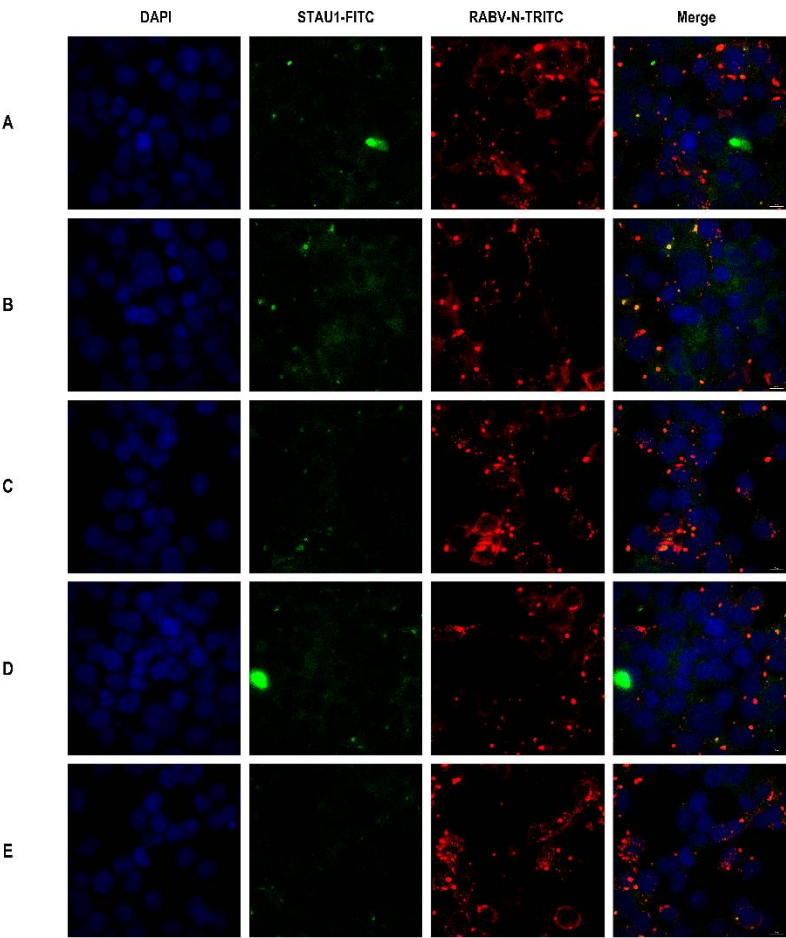


Figure S2A. Subcellular distribution of STAU1 in RABV-infected LV-shRNA-iSTAU1, Bars=10 μ m.

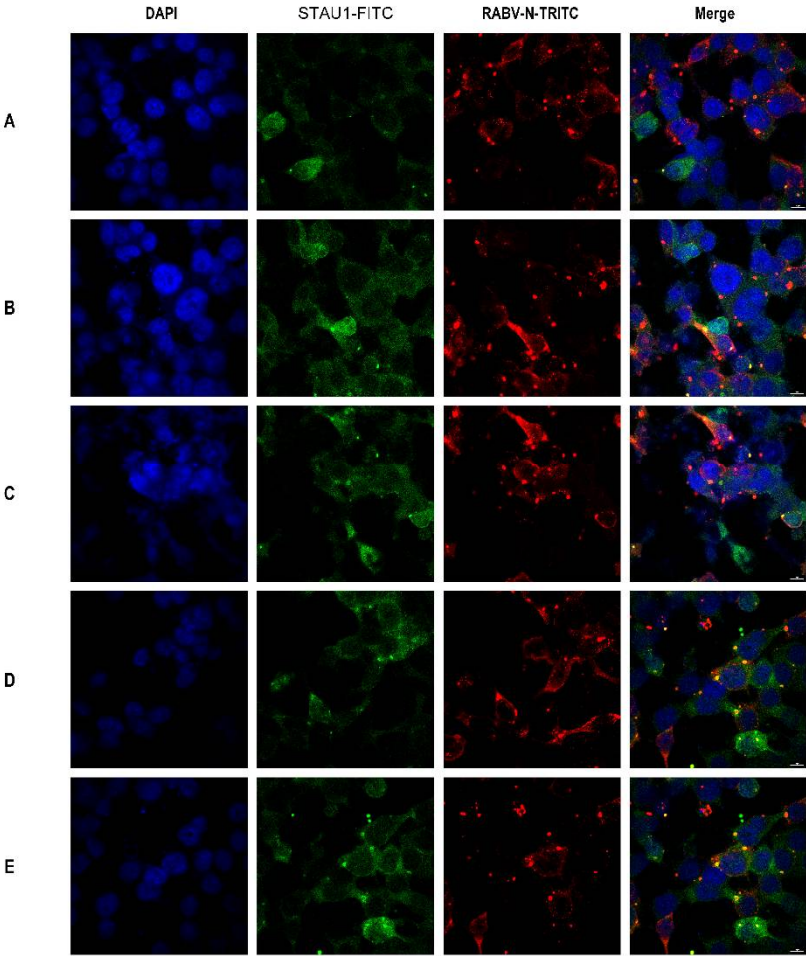


Figure S2B. Subcellular distribution of STAU1 in RABV-infected LV-shRNA-iC, Bars=10 μ m.