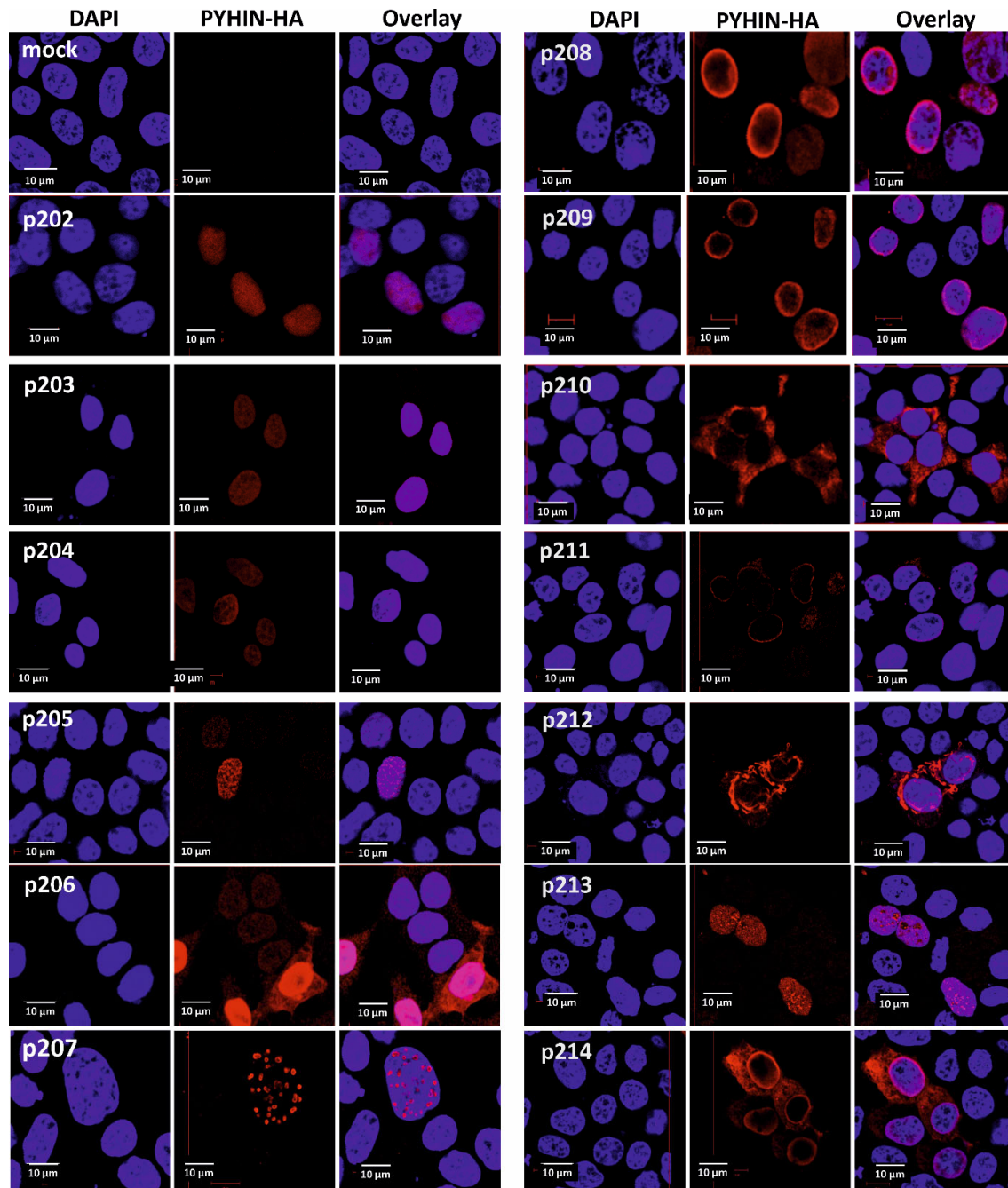


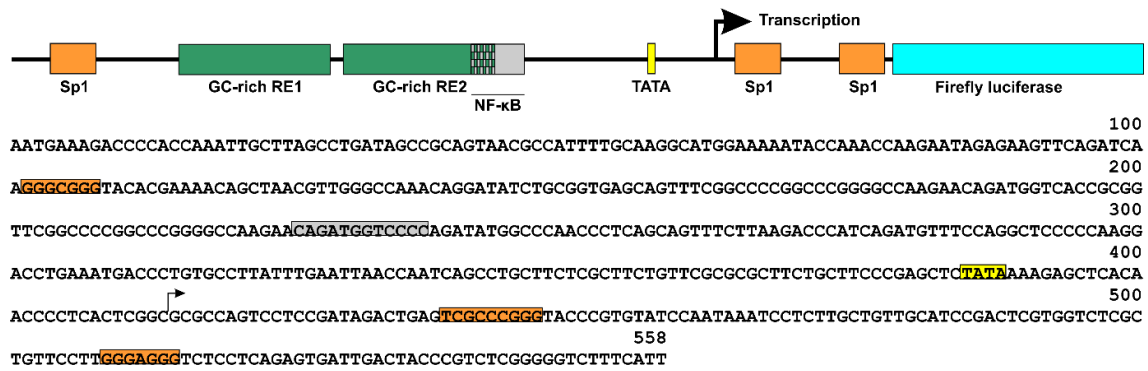
A Variety of Mouse PYHIN Proteins Restrict Murine and Human Retroviruses

Sümeyye Erdemci-Evin, Matteo Bosso, Veronika Krchlikova, Wibke Bayer, Kerstin Regensburger, Martha Mayer, Ulf Dittmer, Daniel Sauter, Dorota Kmiec, Frank Kirchhoff

Supplementary material



Supplementary Figure S1. Subcellular localization of murine PYHIN proteins. HEK293T cells were transfected with expression vectors for murine PYHIN proteins with a C-terminal HA-tag. 40h post-transfection, cells were fixed and stained with antibody targeting HA-tag to visualize PYHIN proteins (red) and DAPI to image the nuclei (blue).



Supplementary Figure S2. Schematic representation of the F-MLV LTR luciferase construct and the viral LTR. Sp1/Sp3 and NF-κB binding sites were identified using the PROMO prediction tool and are indicated in the schematic and the LTR sequence.