

Supplementary Information

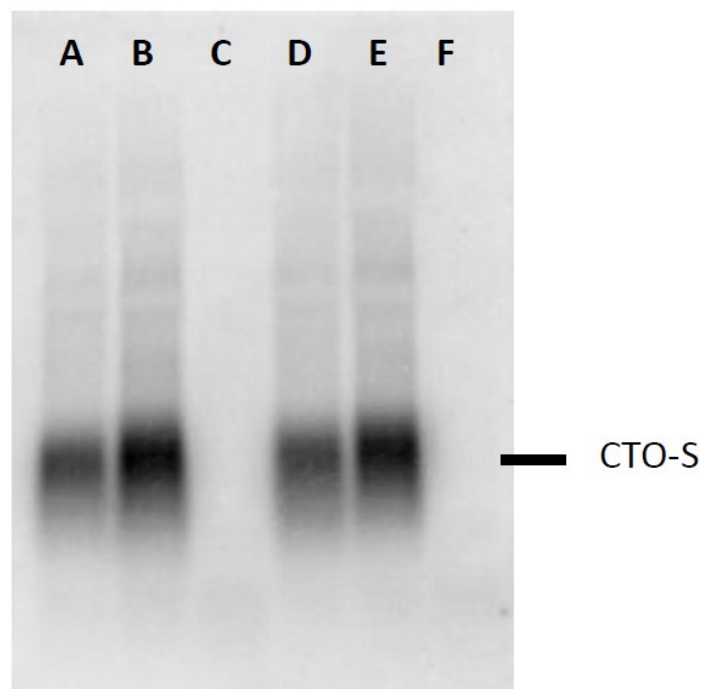


Figure S1. Northern blot analysis of the CTO-S transcript. The lanes were loaded with RNAs isolated from PK-15 cells 4 h p.i (*A* and *D*), 6 h p.i. (*B* and *E*), or non-infected (*C* and *F*). Lanes within the same brackets indicate parallel experiments. The ^{32}P -labeled antisense-RNA probes used for the hybridization were produced by *in vitro* transcription from PCR products containing the CTO-S lnc-RNA gene. The sense RNA was also used as a probe, but it yielded no hybridization, indicating that only one of the DNA strand of CTO-S region is transcriptionally active (data not shown).