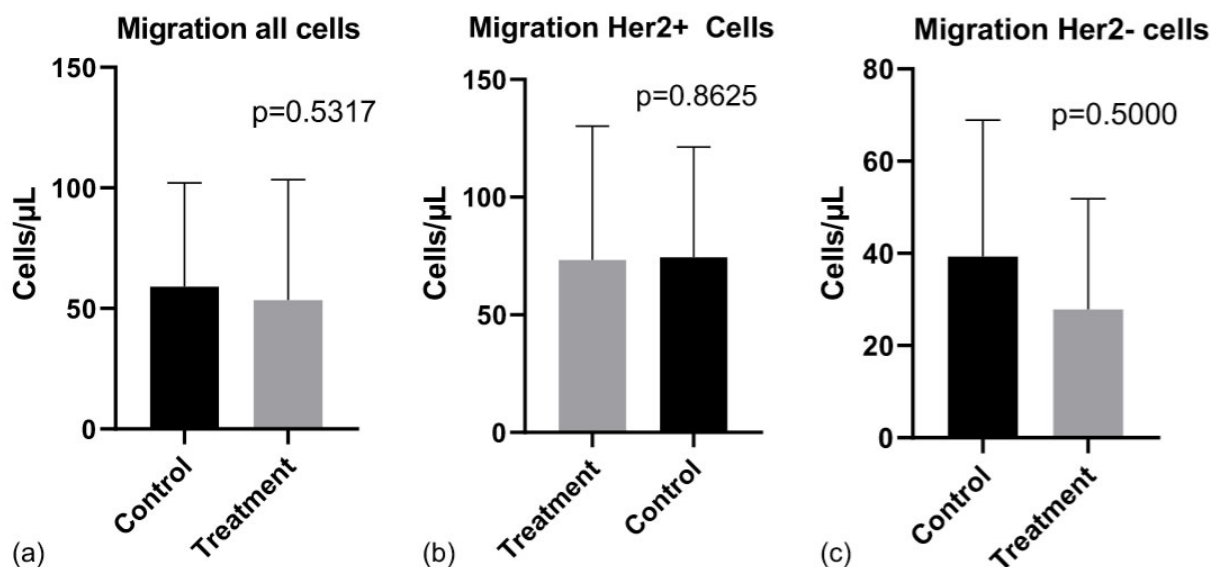
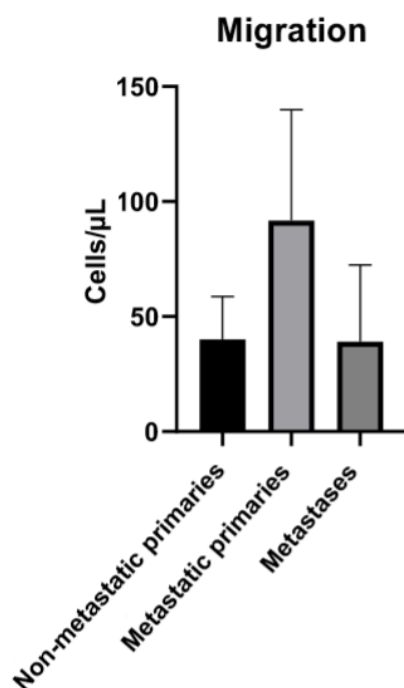


## Supplementary Materials: Effects of Lapatinib on HER2-Positive and HER2-Negative Canine Mammary Carcinoma Cells Cultured In Vitro

Antonio Fernando Leis Filho, Patrícia de Faria Lainetti, Priscila Emiko Kobayashi, Carlos Eduardo Fonseca Alves and Renée Laufer Amorim



**Figure S1.** Mann-Whitney analysis of cell migration. There was no statistical difference in any analysis (a): All cell cultures. (b): HER2+ cell cultures. (c): HER2- cell cultures.



**Figure S2.** ANOVA evaluation of cell culture migration when grouped into non-metastatic primaries, metastatic primaries and metastases. Non-metastatic primaries versus metastatic primaries  $p = 0.2873$ ; Non-metastatic primaries versus metastases  $p = 1$ ; Metastatic primaries versus metastases  $p = 0.1822$ .

**Table S1.** Clinical data from animals with mammary carcinoma used for primary cell culture (Lainetti *et al.*, 2020).

Identification	Breed	Age (Years)	Histologic classification <sup>1</sup>
UNESP-CM1	Poodle	12	Solid carcinoma
UNESP-CM5	Teckel	10	Solid carcinoma
UNESP-CM9	Mixed breed	12	Solid carcinoma
UNESP-CM60	Teckel	14	Adenosquamous carcinoma
UNESP-MM1	Poodle	12	UNESP-CM1 bone metastasis
UNESP-MM4	Teckel	14	UNESP-CM60 lymph node metastasis

<sup>1</sup> Neoplasms were classified and graded following Goldschmidt *et al.*, 2011.