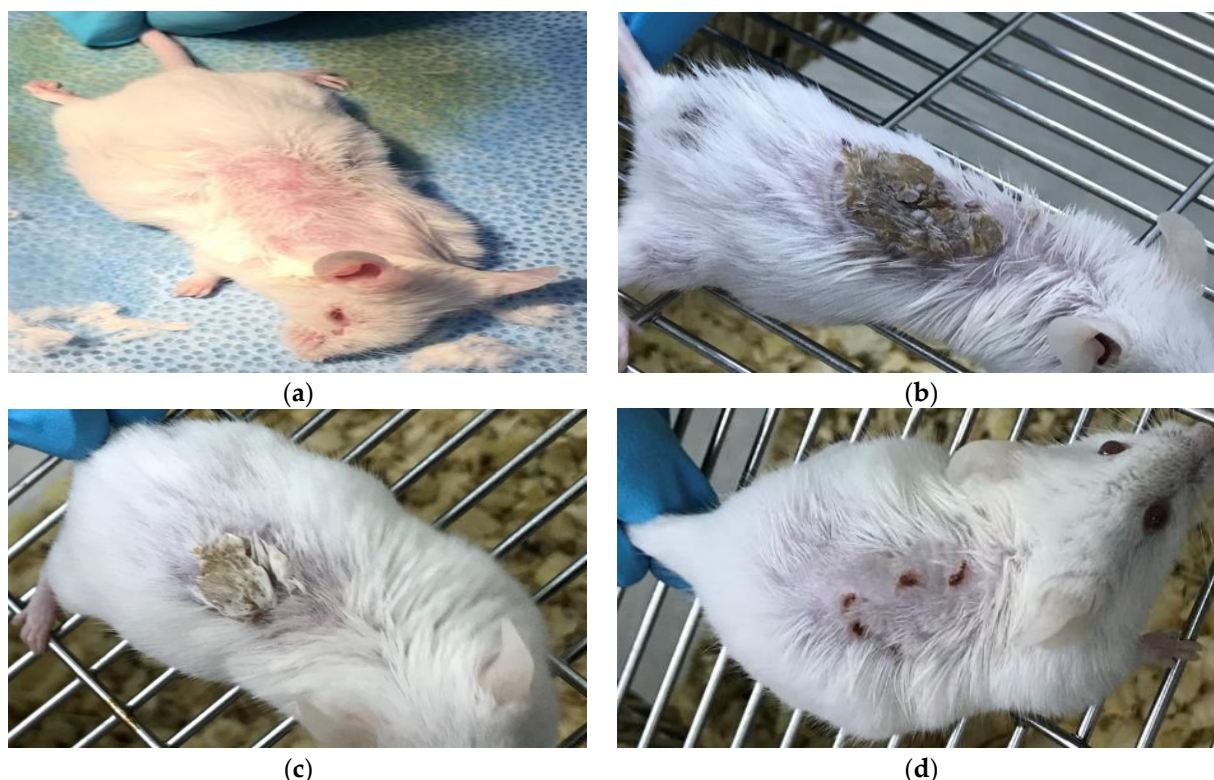


# Supplementary Materials: Histological Studies on a Newly Isolated *Bacillus subtilis* D10 Protease in the Debridement of Burn Wound Eschars Using Mouse Model

Ibtesam Al-Dhuayan, Essam Kotb, Amany Alqosaibi and Amal Mahmoud



**Figure S1.** Wound closure trend due to the cold cream (b), silver sulfadiazine alone (c), and silver sulfadiazine and protease mixture (d). The status before the HCl burning is declared in panel (a).