

(A) Evaluation of autophagy induction in HEK293 cells treated for 24 hours with trehalose and **5a**. Upon treatment, we analyzed tubulin, LC3BI and II levels by western blotting.

(B) The graph shows LC3BII amount expressed as fold over α-tubulin. Data are expressed as mean ± S.E.; * < p<0.05, ** p<0.01, *** p<0.001 versus control, n=4-5.

(C) The graph shows LC3BII/LC3BI ratio. Each value was normalized on proper control. Data are expressed as mean ± S.E.; * < p<0.05, ** p<0.01 versus control, n=4-5.

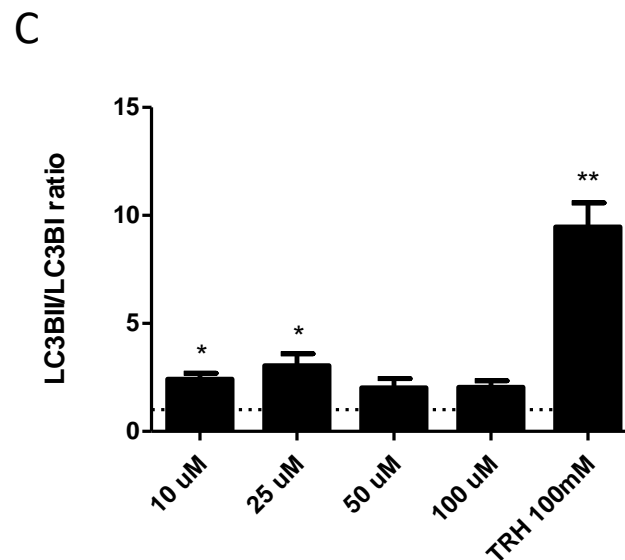
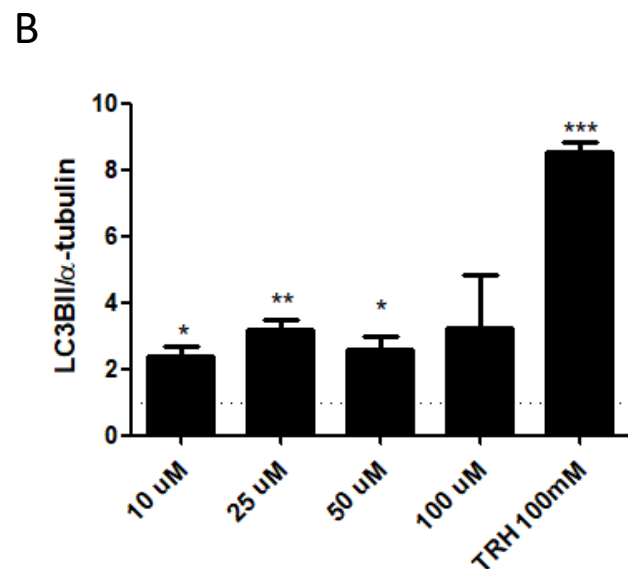
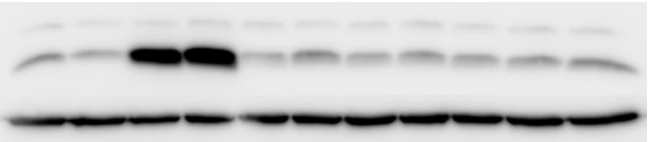
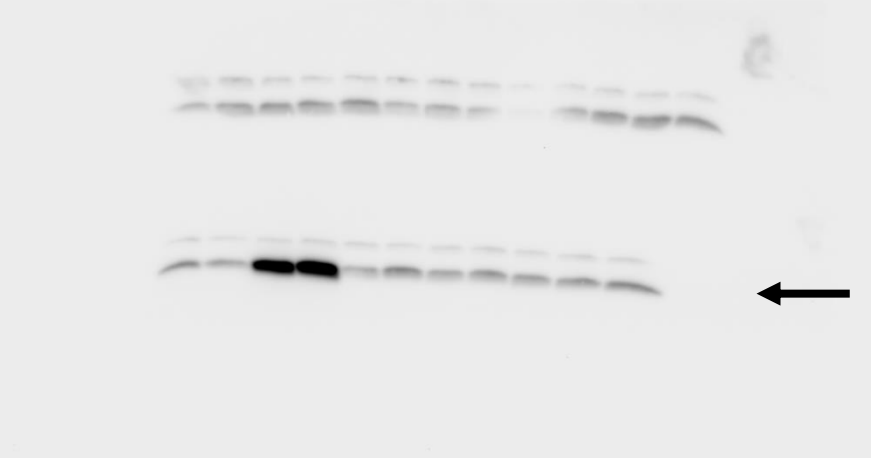


Figure S2A

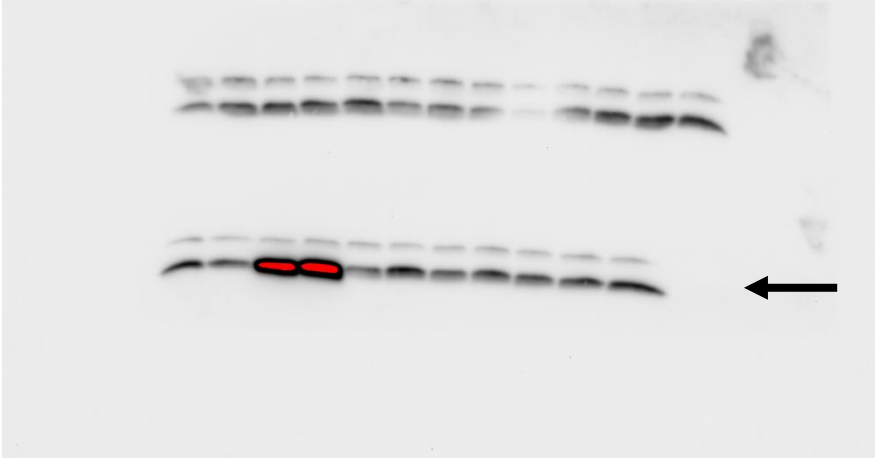


LC3 B

IMG PAPER



IMG HIGH EXPOSURE



Alpha- tubulin

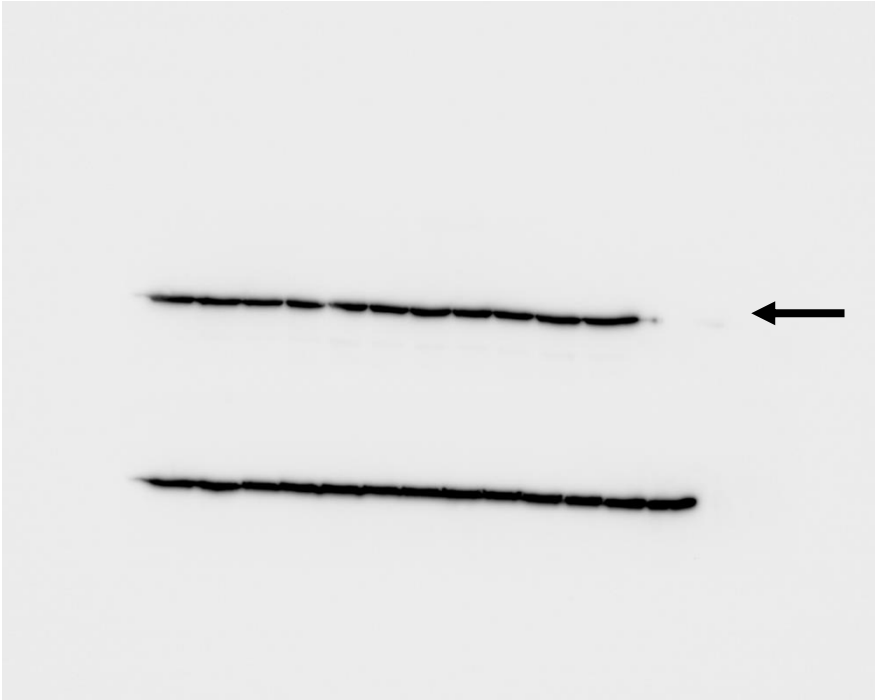
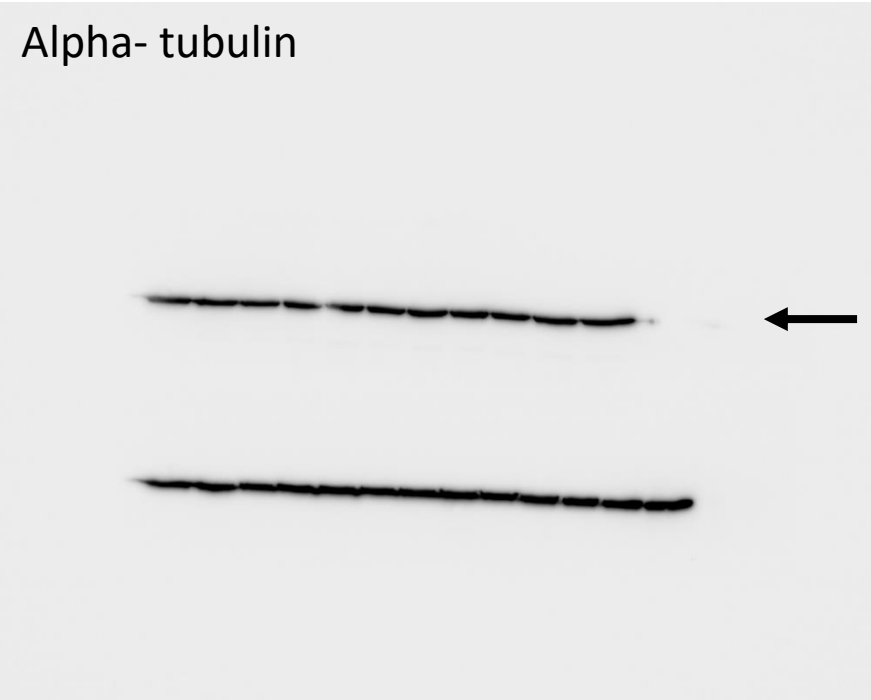


Figure S2B

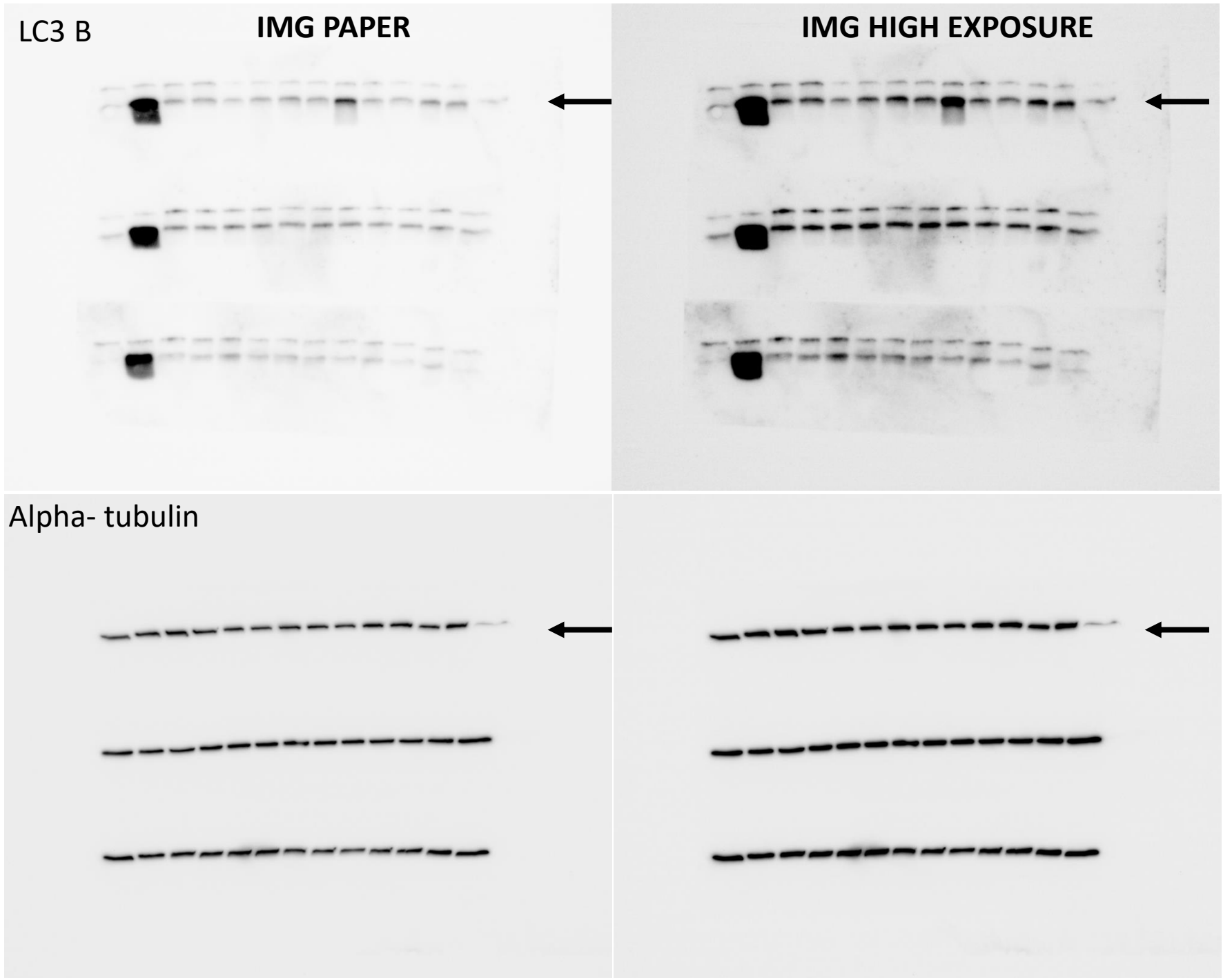
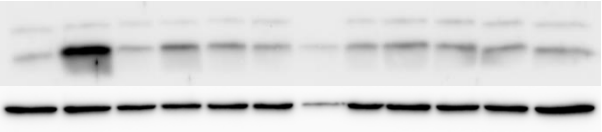
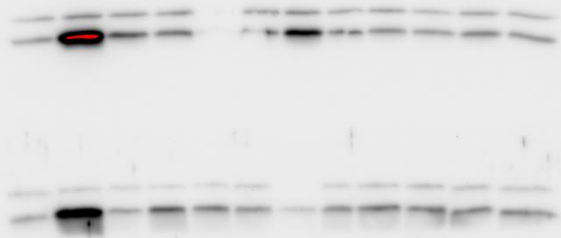


Figure S2C

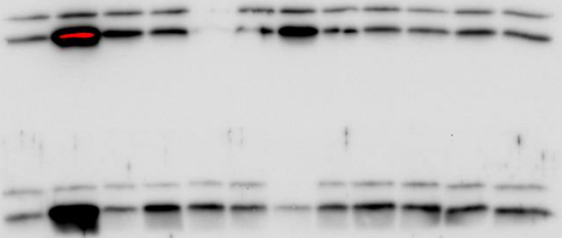


LC3 B

IMG PAPER



IMG HIGH EXPOSURE



Alpha- tubulin

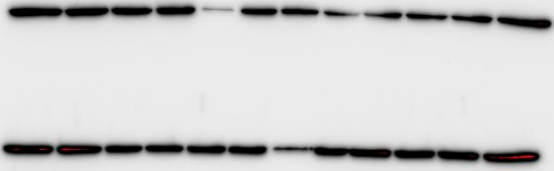


Figure S3

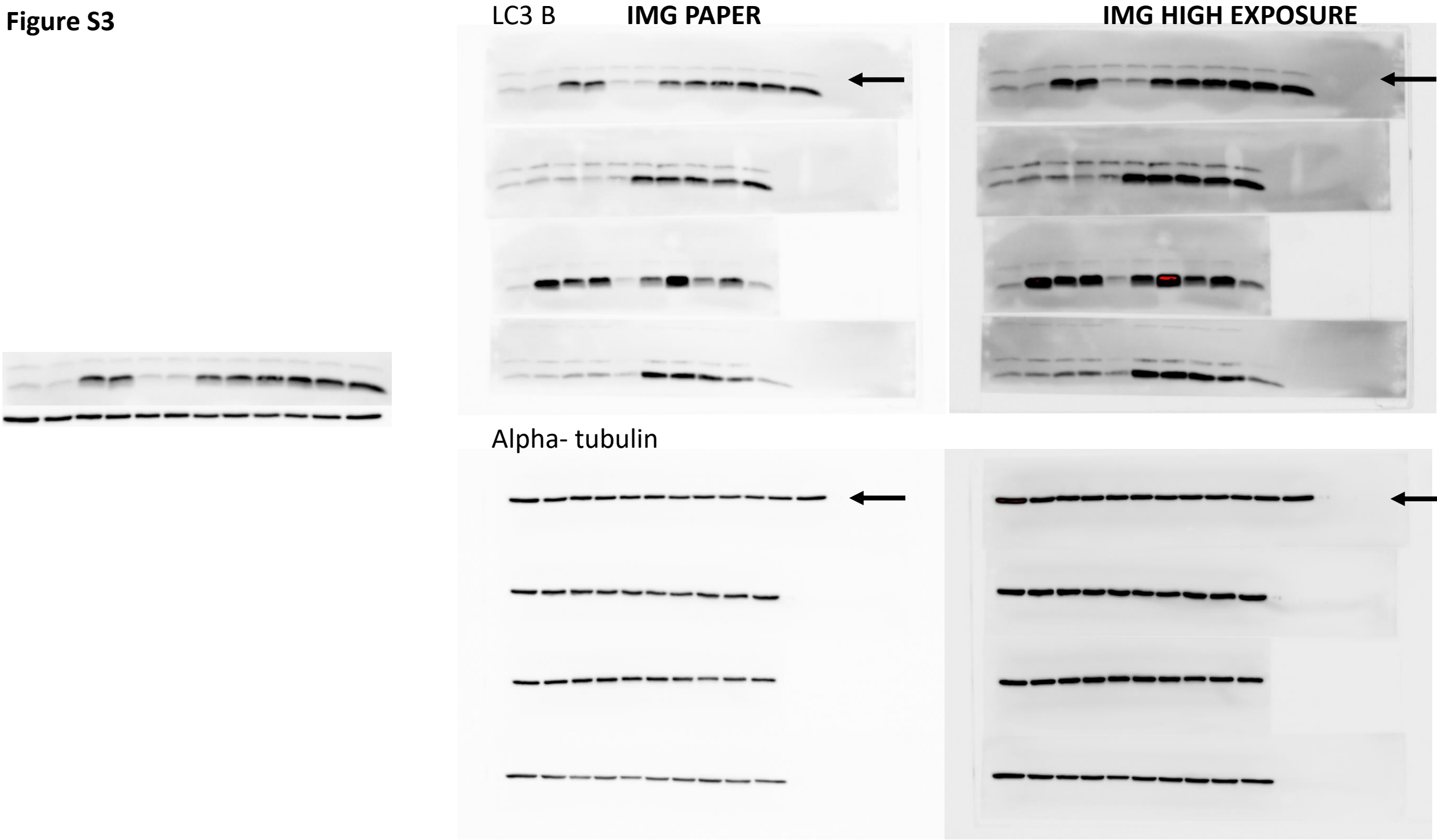


Figure S4

