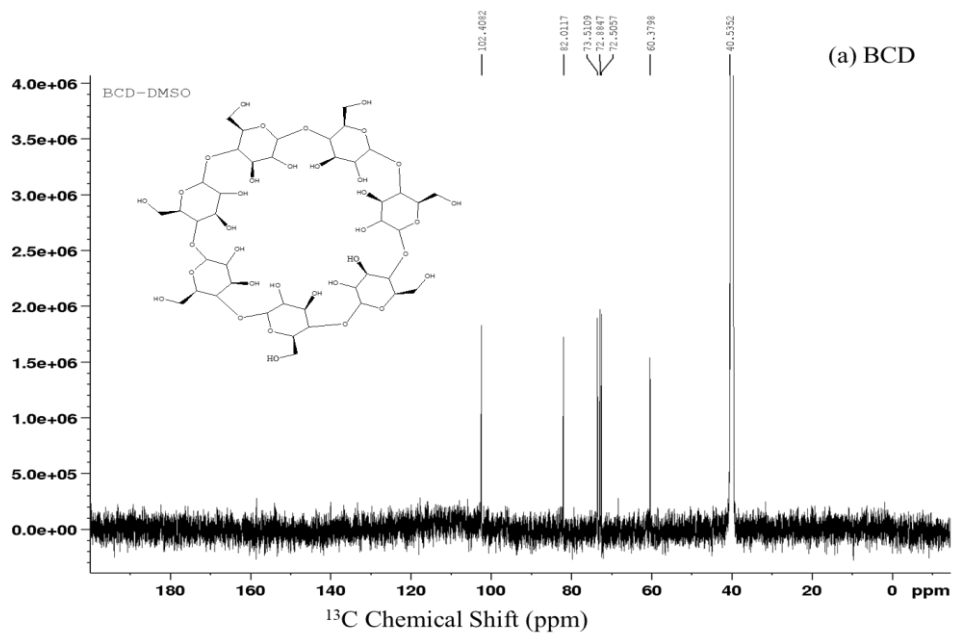
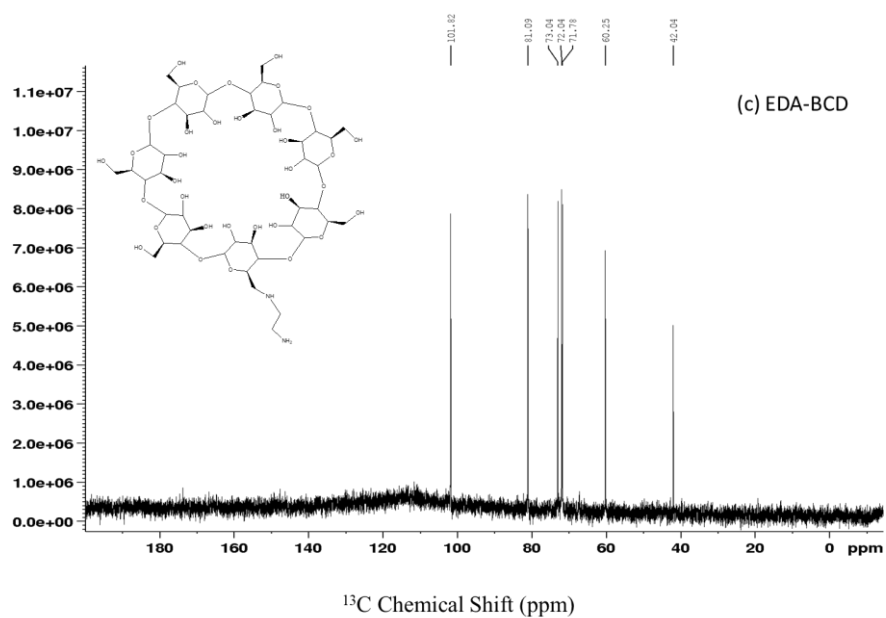
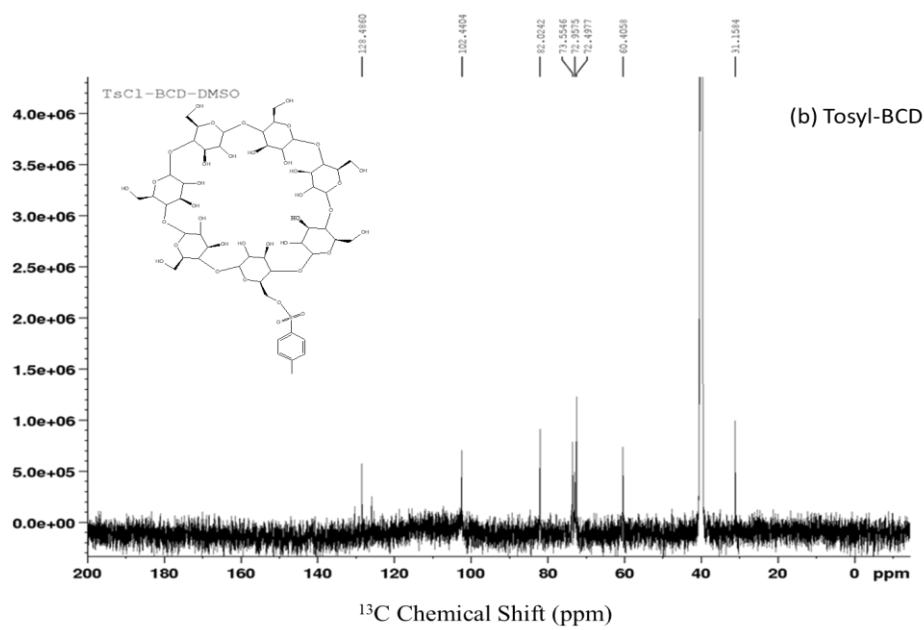
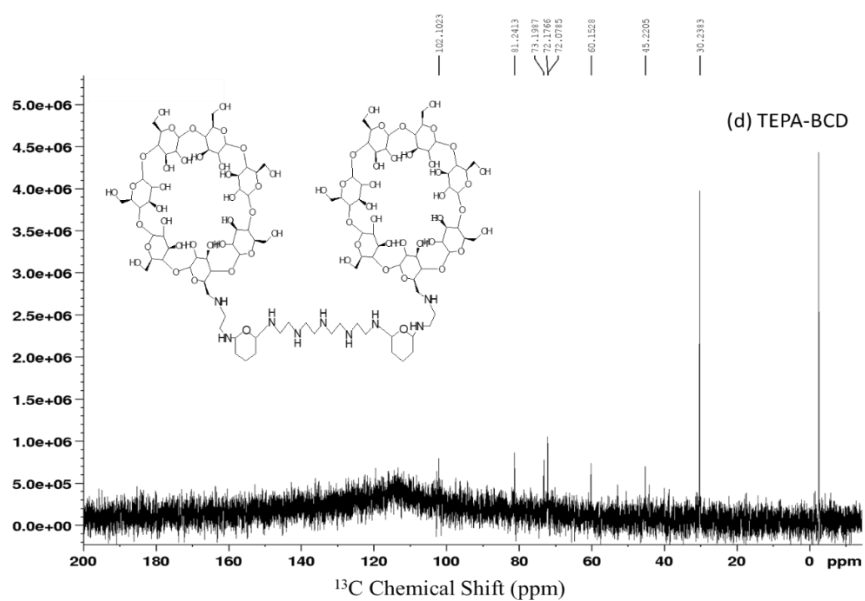


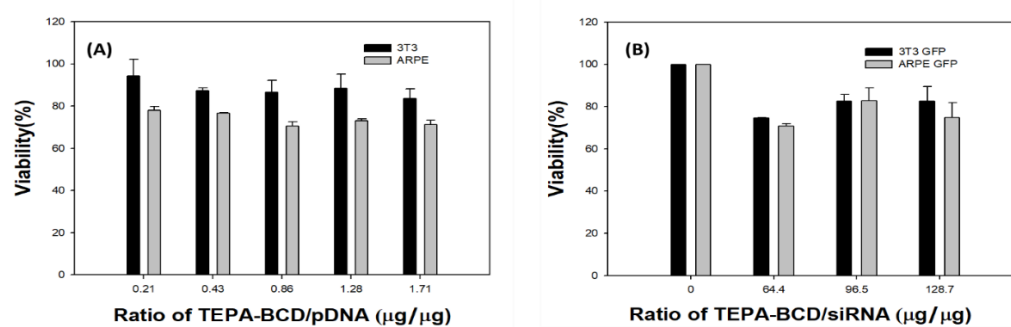
**Figure S1.** <sup>1</sup>H spectra of (a) BCD, (b) Tosyl-BCD, (c) EDA-BCD, (d) TEPA-BCD.



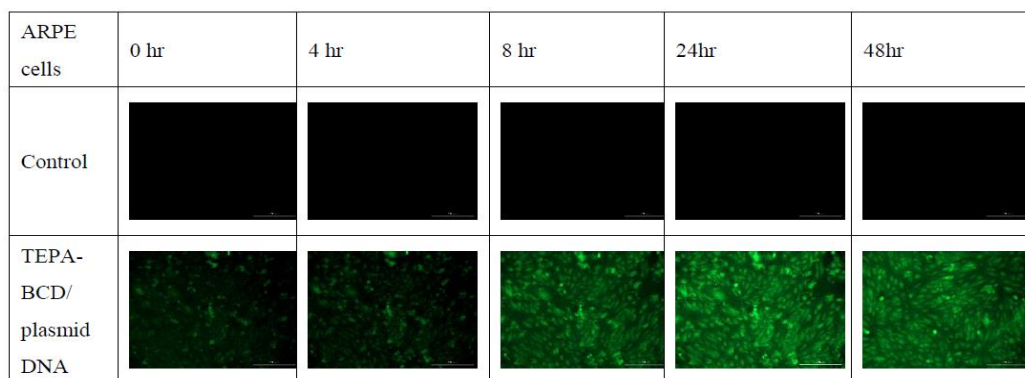




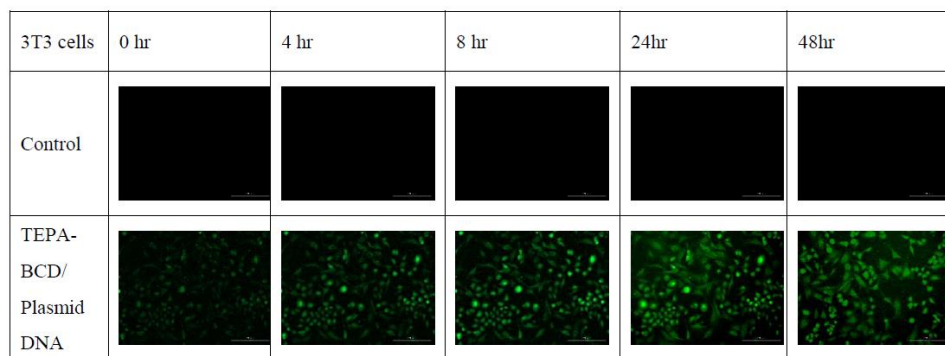
**Figure S2.**  $^{13}\text{C}$  spectra of (a) BCD, (b) Tosyl-BCD, (c) EDA-BCD, (d) TEPA-BCD.



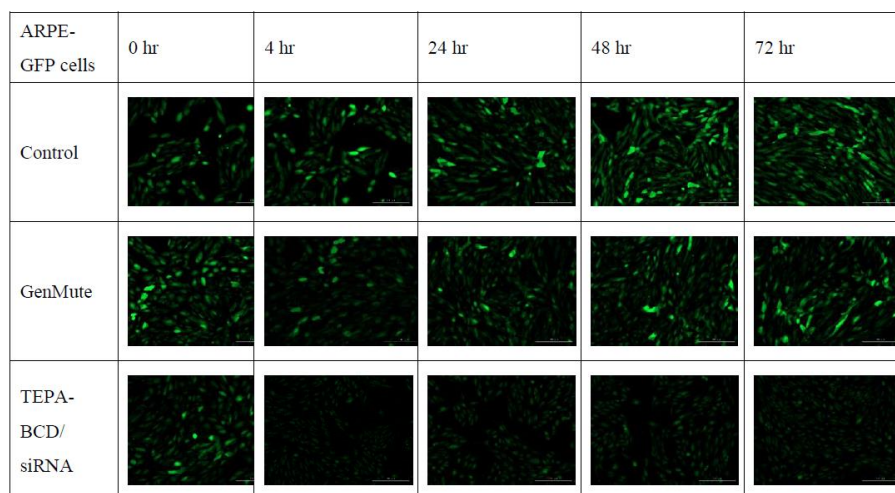
**Figure S3.** Cell viability of 3T3 and ARPE (A), and their GFP-expressing cells (B) after 72 h treatment of TEPA-BCD complexes.



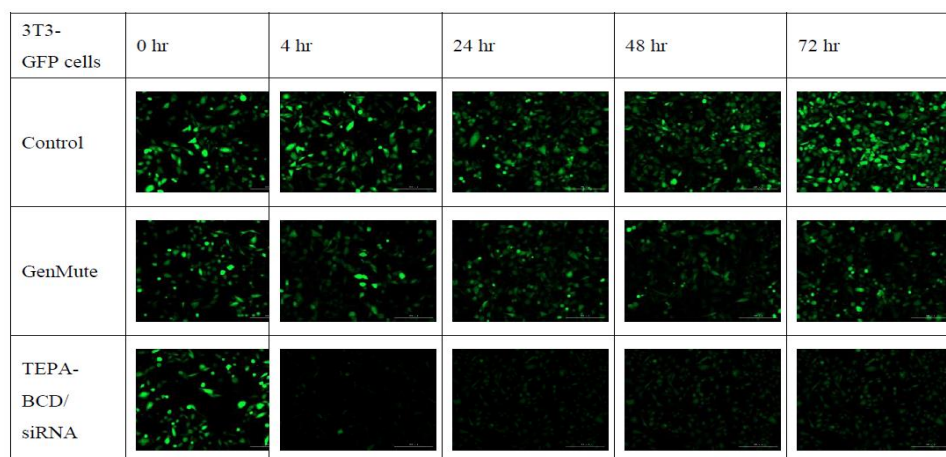
**Figure S4.** Time-course fluorescence imaging demonstrated GFP upregulation in ARPE cells after TEPA-BCD/plasmid DNA transfection. Control groups were nontreated cells.



**Figure S5.** Time-course fluorescence imaging demonstrated GFP upregulation in 3T3 cells after TEPA-BCD/plasmid DNA transfection. Control groups were nontreated cells.



**Figure S6.** Time-course fluorescence imaging demonstrated GFP silencing in ARPE-GFP cells after TEPA-BCD/siRNA transfection. Control groups were nontreated cells. GenMute served as a positive control.



**Figure S7.** Time-course fluorescence imaging demonstrated GFP silencing in 3T3-GFP cells after TEPA-BCD/siRNA transfection. Control groups were nontreated cells. GenMute served as a positive control.