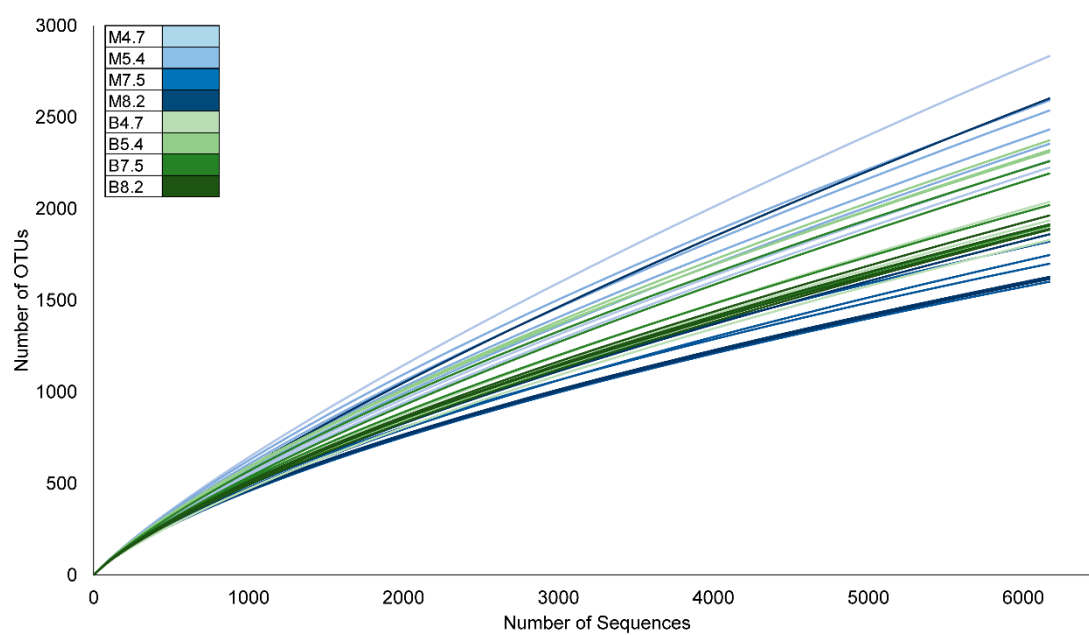
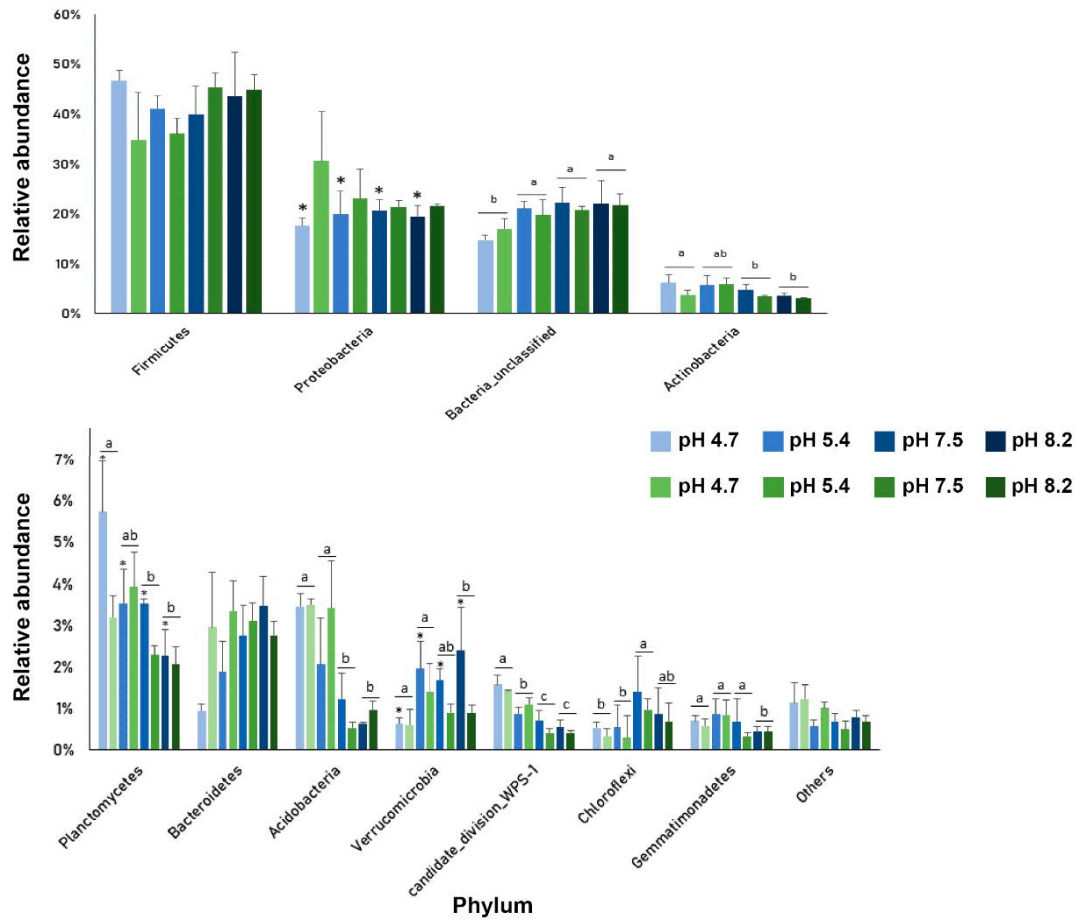


Supplementary Material



Supplementary Figure S1. Rarefaction curves of the 16S rRNA gene sequencing of the rhizosphere soil of maize (M), bean (B) in the pH ranges of 4.7, 5.4, 7.5 and 8.2.



Supplementary Figure S2. Relative abundance of the main bacterial phyla found in the different treatments, A. phyla of greater abundance, B. phyla of less abundance. In green scale there are the pH ranges corresponding to the treatment with beans and in the blue scale the pH ranges corresponding to the treatment with corn. The letters in the graphs indicate the significant influence ($p < 0.05$) of the pH and the asterisks (*) the significant influence of the type of plant, according to the Tukey test.