

Article

Research on Investment Decision-Making in Waterway Engineering Based on the Hub Economic Index

Jiarui Ren ¹, Guangxiong Mao ¹, Fei Zhang ¹ and Yuhang Wei ^{2,3,*}

¹ School of Urban and Environmental Sciences, Huaiyin Normal University, Huai'an 223300, China; rjr@hytc.edu.cn (J.R.); mao@hytc.edu.cn (G.M.); qingzhuzhang@hytc.edu.cn (F.Z.)

² Future H2O, Knowledge Enterprise Development, Arizona State University, Tempe, AZ 85281, USA

³ R&D, Shandong Province Huai River Authority Water Consultancy, Jinan 250100, China

* Correspondence: yuhang.wei@asu.edu; Tel.: +1-480-408-9372 or +1-480-965-5904

Received: 16 December 2019; Accepted: 17 February 2020; Published: 18 February 2020



Abstract: Due to the wide range of waterway engineering strategies, the government often has the view that investment in hardware (such as construction, equipment renewal, etc.) is more important than that in software (such as information systems, service concepts, etc.) in the investment decision-making of waterway engineering. Besides, some government departments lack a consideration of coordinated development among different industries, resulting in the waterway industry lagging behind other industries (such as expressways, high-speed railway, etc.). To facilitate a more balanced infrastructure investment, we create a novel index, the Hub Economic Index (HEI), by incorporating the theory of the hub economy into the investment decision-making of waterway engineering. HEI consists of two major criteria, tangible and intangible assets, further divided into 10 indices. In particular, investment allocation between tangible and intangible assets is evaluated for the four major reaches of the North Jiangsu Canal. Multiple years of HEI values for the water transport industry are calculated for trend analysis and comparison with other industries. The results show that (1) through the comparison between the calculated values of the HEI investment model and the actual investment, the deviation of the tangible investment is 2.8% lower, and that of the intangible hub investment is 7.2% higher, which is basically in line with the actual situation. At the same time, it promotes the development of software; and (2) through the variation trends in HEI for various industries from 2008 to 2018, the HEI values of the different industries in the transportation system show a trend of steady growth. This is basically consistent with China's economic development trend, but also reflects the development gap between the different industries. The research results are of great significance to help the government to make investment decisions in different fields and industries. The investment based on HEI values will further promote the integrated development of the water transport industry and other industries.

Keywords: waterway engineering; Hub Economic Index; North Jiangsu Canal

1. Introduction

As a traditional method of project evaluation and economic analysis, cost-benefit analysis (CBA) has been applied in many countries. CBA can be used in many fields as a decision-making basis to judge the feasibility of the project [1–3]. CBA is more important to measure and evaluate the cost and benefit of investment projects. Because some public investment (such as transportation infrastructure) has certain comprehensive benefits (including social benefits), its benefits are difficult to evaluate. Therefore, the investment decision-making of transportation infrastructure should not only be considered from the cost-benefit analysis (CBA), but also from multiple sustainable perspectives [4]. Some scholars have carried out research on different aspects of investment decision-making of transportation infrastructure

projects. In view of the optimization of resource allocation in traffic engineering investment planning, a quantitative model is constructed from the two dimensions of industry risk concentration and regional difference, and a regional agglomeration viewpoint with a good environment is put forward [5]. The analytic hierarchy process (AHP) method is adopted to calculate the benefit of an expressway investment project and sort the project investment according to the calculation results [6]. Data envelopment analysis is used to analyze the effectiveness of the Jiangsu inland waterway investment. The analysis results are helpful for waterway management organizations to adjust the level of a regional waterway investment [7]. In view of the regional differences in the development of highway transportation in different regions of China, it is proposed to improve the regional equalization level of highway development, narrow the economic development gap and promote a regionally balanced development. The strategic model of traffic regional differentiation is established [8,9]. In order to make an effective decision on the regional traffic investment structure, considering the regional and interregional economic growth induced by the traffic infrastructure, an optimization model of the regional traffic infrastructure investment structure is established by defining the maximum economic benefit of the regional investment. The model can effectively analyze the impact of the regional traffic investment structure on the economic efficiency and distribution pattern [10]. There are also some scholars from the impact of transport investment path, planning, regulatory effectiveness and other aspects of research [11–15]. The above-mentioned decision-making method solves the priority problem of investment decision-making, but in view of the unbalanced development, only macro investment suggestions are put forward, rarely realizing the quantification of investment decision-making. At the same time, in order to effectively analyze the investment decision-making of transportation engineering, it is necessary to classify the traffic infrastructure. Tangible and intangible assets [16] can be viewed as an important classification for transportation infrastructure, where tangible means visible, real engineering projects, and intangible means non-financial assets, more about the intellectual sides. They are both important for long-term financial performance while the latter is often ignored or underestimated [17]. Further complicated by the multiple projects (regions), it is the high-order decision-making problems that need a huge amount of information and professional judgement. It is a challenge to achieve the balance between transportation and environment, transportation types and project prioritization.

It is key to find a suitable index for sustainable investment and development of transportation infrastructure. However, the establishment of the index system is often a case-specific process, requiring scrutiny of problem and considering many factors. In the construction of terminal investment decision-making indices, the principles of systematization (reflecting the overall investment environment) and operability (providing reference for decision-making) are considered [18]. The principle of combining quantitative and qualitative indexes is considered in the selection of performance evaluation indexes of green highway project management [19]. Many countries gradually apply sustainable development indices to project investment. The sustainability index of integrating road traffic externalities is established [20]. From the perspective of promoting the overall development of the economy, society and ecology, as well as improving the quality-of-life of residents, the definition and connotation of sustainable development of urban transportation are explained, and the life quality index and fairness index based on people are put forward [21]. At present, the common quantitative research methods of selecting indices include the Delphi method, fuzzy mathematics method and analytic hierarchy process [22–24], among which analytic hierarchy process is the most widely used, because the AHP decomposes complex problems into various components, which are grouped according to the dominant relationship to form an orderly hierarchical structure, each of which quantifies the impact results. The calculation result is simple and clear, which is easy to provide a reference for decision makers [25]. However, there are some shortcomings in AHP, such as the consistency of the judgment matrix that is not easy to master, and there are some differences between the consistency of the judgment matrix and the consistency of decision-making thinking. In order to optimize the consistency of judgment, many scholars began to introduce the fuzzy method into the

analytic hierarchy process, and solved many practical sustainable development problems [26–28]. This paper attempts to apply the fuzzy analytic hierarchy process to the investment decision-making of waterway engineering. Due to the multi-criteria and multi-level characteristics of the actual project, it is proposed to optimize the method according to the characteristics of indices, hoping to further promote the sustainable development of waterway engineering.

With the deepening of research, some scholars began to study new indices, such as the human water harmony index (HWHI); this method is a more comprehensive method based on the concept of harmony, and also a method of sustainable development. HWHI employs 27 indices from three dimensions (development, coordination and satisfaction) and was applied to five important cities in China—Beijing, Shanghai, Guangzhou, Xi'an and Nanjing [29]. The above research studies the indices of sustainable development from different aspects, especially the establishment of a new index that could provide new ideas for decision-making investment. With the continuous development of the city, the form of transportation has changed from single to diversified, and gradually integrates with other industries (logistics, Internet, etc.) to form a hub economy based on a variety of transportation.

The hub economy is a new economic model developed on the basis of transportation, logistics and information hubs. It mainly relies on various factors gathering carriers and platforms, such as transportation hubs, logistics hubs and information hubs. According to the law of value, with the help of modern information technology such as network and big data, the hub economy can induce talent, labor force, information, technology, capital and other production factors to gather in the hub region. At the same time, the region can become a center of economic value creation. A hub economy generally has three stages of development: One is a transportation hub economy based on transportation infrastructure; the other is an economic hub characterized by factor agglomeration; and the third involves the integration of transportation and the social economy [30]. The hub economy coincides with the concept of sustainable development. The implementation of the three development stages is conducive to the integrated development of transportation and social economy. The efficiency of the public transportation hub characteristics has been studied [31]. A reliable model of the multimodal transportation hub location problem was established [32]. Through market-oriented operation and the introduction of diversified social investment research, improvement of the social and economic benefits of a comprehensive transportation hub was realized [33]. A comprehensive evaluation index for the transfer efficiency of the urban transportation hub was established [34]. One of the important factors in the design of a comprehensive transportation hub is passenger orientation [35]. The cooperation effect between high-speed rail and airlines under the capacity constraint of a hub airport is studied [36]. The concept of the urban hub economy and four aspects of promoting the urban hub economy have been described [37]. The path of hub economy development has been proposed [38]. China's regional hub economic development was studied in three aspects, namely basic conditions, core contents and support [39]. The above research describes the development process and conditions of the hub economy and has made some achievements. Because the hub economy is a new type of economic model, the research on hub economy is still in its infancy. Scholars put forward the idea of constructing and investing the transportation support system (including water transportation) of a freedom hub to develop the hub economy [40]. However, most of the above studies are based on the macro level hub economy theory. At present, there is a gap on quantitative aspects on the hub economic index.

In this paper, waterway engineering is taken as the research object and a clear and quantitative Hub Economic Index is established. The Hub Economic Index (HEI) employs 10 indices from two dimensions (tangible index and intangible index). Taking the North Jiangsu Canal, part of the South to North Water Diversion Project in China as an example, the effectiveness of the scheme is evaluated. The contribution of this paper is to propose an investment method for sustainable development of waterway engineering based on the quantitative index of a hub economy. The results show that the proposed model provides quantitative decision indices for investors of waterway engineering, which is conducive to promoting the development of a hub economy and realizing the comprehensive development of the transportation industry.

2. Methods

2.1. Sustainable Development Investment Function

According to the definition of sustainable development [41], in the process of investment decision-making of water transport engineering, we should take social, economic and ecological factors into account from the perspective of sustainable development and get the function of the sustainable development investment. Therefore, the sustainable development investment function is computed as shown in Equation (1).

$$V_{(T)} = \sum_{i=1}^n V_{i(T)} = \sum_{i=1}^n f(s_{i(T)}, e_{1i(T)}, e_{2i(T)}) \quad (1)$$

where T is the time, e.g., year; $V_{(T)}$ is the sustainable development investment value at T ; $V_{i(T)}$ represents the investment amount of part i at T ; $s_{i(T)}$ is the social index of part i at T ; $e_{1i(T)}$ is the economic index of part i at T ; and $e_{2i(T)}$ is ecological index of part i at T .

2.2. Sustainable Development Investment Function Based on Hub Economy

As the project investment involves a wide range of factors, this paper introduces the hub economic indices into the sustainable development investment function, which can not only reflect the comprehensive benefits of each project, but also provide important decision-making reference for government departments. In order to facilitate the calculation of the hub economy value, we divide the investment based on hub economy into the tangible hub investment $H_{1(T)}$ and the intangible hub investment $H_{2(T)}$.

Definition 1: $H_{1(T)}$ is the tangible hub index value at T . The main investment objects are hardware (such as construction, equipment renewal, etc.).

Definition 2: $H_{2(T)}$ is the intangible hub index value at T . The main investment objects are software (such as information systems, service concepts, etc.).

Therefore, the sustainable development investment function based on hub economy is computed as shown in Equation (2).

$$V_{(T)} = \sum_{i=1}^n V_{i(T)} = \sum_{i=1}^n f(HEI_{i(T)}) \quad (2)$$

where $HEI_{i(T)}$ is the hub economic index value of part i at T .

Hub economic index values are a combination of tangibles and intangibles. Therefore, $HEI_{(T)}$ is computed as shown in Equation (3).

$$HEI_{(T)} = f(H_{1(T)}, H_{2(T)}) = \beta_1 \bullet H_{1(T)} + \beta_2 \bullet H_{2(T)} \quad (3)$$

Constraint conditions: $0 \leq H_{1(T)} \leq 1$, $0 \leq H_{2(T)} \leq 1$ where β_1 is the weight of value of $H_{1(T)}$ and β_2 is the weight of value of $H_{2(T)}$. Determined by AHP method:

$$H_{1(T)} = \sum_{i=1}^n H_{1(T)R_i} \bullet W_{H1(T)} \bullet W_{R_i} \quad (4)$$

$$H_{2(T)} = \sum_{i=1}^n H_{2(T)R_i} \bullet W_{H2(T)} \bullet W_{R_i} \quad (5)$$

where $H_{1(T)R_i}$ is the value of $H_{1(T)}$ in the R_i region; $W_{H_{1(T)}}$ represents the weight value of $H_{1(T)}$; W_{R_i} represents the weight value of R_i region; $H_{2(T)R_i}$ is the value of $H_{2(T)}$ in the R_i region; $W_{H_{2(T)}}$ represents the weight value of $H_{2(T)}$; and W_{R_i} represents the weight value of R_i region.

The investment proportion formula of the different jurisdictions is as shown in Equations (6) and (7).

$$P_{H_{1(T)R_i}} = H_{1(T)R_i} \bullet W_{H_{1(T)}} / (H_{1(T)R_i} \bullet W_{H_{1(T)}} + H_{2(T)R_i} \bullet W_{H_{2(T)}}) \quad (6)$$

$$P_{H_{2(T)R_i}} = H_{2(T)R_i} \bullet W_{H_{2(T)}} / (H_{1(T)R_i} \bullet W_{H_{1(T)}} + H_{2(T)R_i} \bullet W_{H_{2(T)}}) \quad (7)$$

where $P_{H_{1(T)R_i}}$ and $P_{H_{2(T)R_i}}$ represent the proportion of investment in the tangible and intangible hubs, respectively.

2.3. Investment Decision-Making Process of Waterway Engineering Based on HEI

The traditional investment decision-making process is mainly about fund implementation, fund allocation model and fund allocation. In this paper, HEI is introduced into the process of investment decision-making, combined with the current situation of capital allocation, and HEI is introduced into the process of capital allocation model to meet the needs of sustainable development of the project. The investment decision-making process in waterway engineering was discussed by experts, and includes three aspects: First, an investment plan for waterway engineering is needed, and the capital has to be raised; second, an HEI calculation model of waterway engineering is established, and the HEI values of the whole and each subitem are calculated according to the model; finally, the calculated HEI values are compared with the hub economy grade table to get an investment plan for each subproject. Figure 1 shows the workflow of the waterway engineering investment process used in this study.

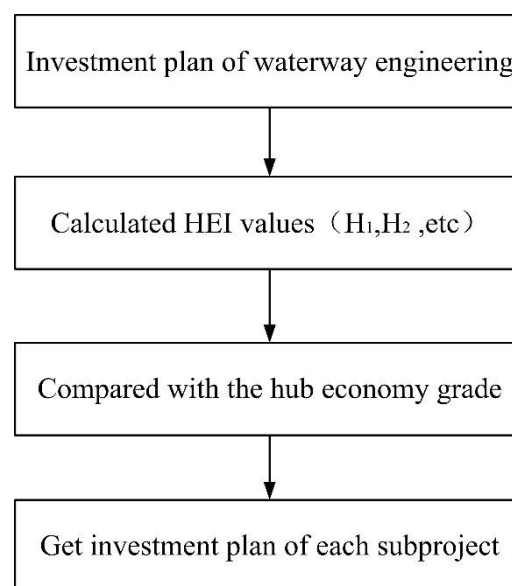


Figure 1. Overview of the waterway engineering investment process based on the Hub Economic Index (HEI).

2.4. Hub Economic Index System

Because the hub economy involves different regions or industries, its investment scope is also different. To facilitate investment decisions in different regions or industries. According to the different hub economic scope, after extensive discussion by experts, the hub economic indices are divided into cross-regional hub economic indices, regional and below hub economic indices and industrial hub economic indices. The relationship is as shown in Figure 2. Hub indices are mainly divided into two

levels, the first being cross-regional hub economic indices, and the second level being regional and below hub economic indices and industrial hub economic indices.

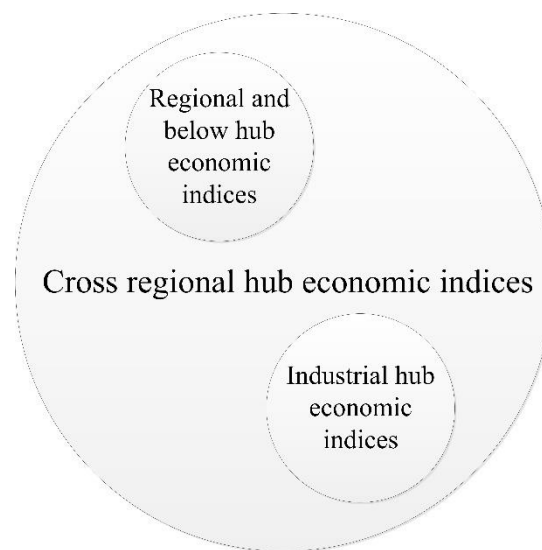


Figure 2. Relationship between hub economic indices of different levels based on the hub concept [42].

This paper takes the hub economic indices of the transportation industry as an example; its framework is as shown in Figure 3.

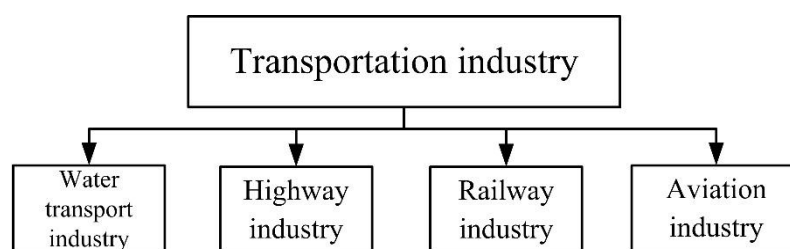


Figure 3. Framework of the transportation industry's hub economic indices.

As can be seen from Figure 3, the transportation industry is composed of the water transportation industry, the highway industry, the railway industry and the aviation industry. This paper mainly studies the investment decision-making of the water transportation industry. As the water transportation industry has entered the information age, intelligent transportation systems have played an increasingly important role. Considering the experience of the current project investment, after extensive discussion by experts and engineers, the HEI system is classified into tangible hub indices (H_1) and intangible hub indices (H_2). At the same time, the social, economic, ecological and other contents of sustainable development are included in HEI quantification indices. In this paper, the selection of indices mainly considers the principles of systematization, a combination of qualitative and quantitative, and operability. The Delphi method and frequency analysis method [43] were used to screen the indices. The specific steps of selecting indices were as follows: (1) Statistics of the indices in domestic and international academic research reports, journals and other materials were carried out by using the frequency analysis method, and the indices with a higher frequency were selected according to certain mathematical statistical methods, and these indices are summarized in order; (2) according to the characteristics of waterway engineering, opinions of domain experts were sought and indices were supplemented and improved; and (3) after the final confirmation by experts, the final index set after screening was obtained. Figure 4 shows the waterway engineering index system screening process.

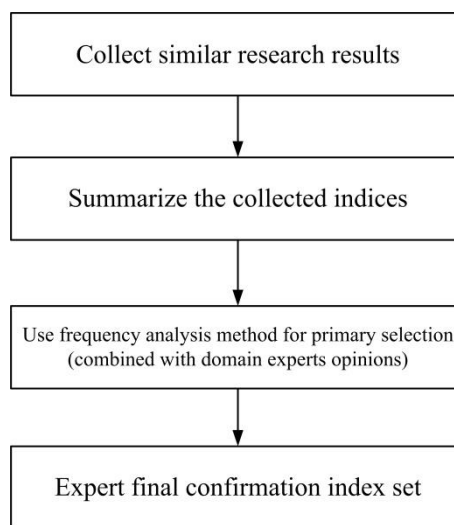


Figure 4. Overview of the waterway engineering index system screening process.

According to the above index system screening process. A preliminary selection of quantitative indices for waterway engineering is as shown in Table 1.

Table 1. The HEI quantification indices in waterway engineering.

First-Grade Indices	Serial Number	Second-Grade Indices	Second Round Screening
H_1	U_{11}	Bank revetment engineering	√
	U_{12}	Dredging engineering	√
	U_{13}	Mechanical equipment	√
	U_{14}	Electrical equipment	√
	U_{15}	Channel level compliance	×
	U_{16}	Intelligent equipment	√
H_2	U_{21}	Information technology	√
	U_{22}	Busyness of waterway	√
	U_{23}	Training learning	√
	U_{24}	Ecological environment	√
	U_{25}	Crew satisfaction	√
	U_{26}	Digital channel coverage	×

The preliminary screening results of the waterway engineering index system were screened twice by expert review, and the indices with a high correlation were eliminated (channel level compliance and digital channel coverage), and finally the index set (final results) of the waterway engineering index system was formed.

2.5. Quantitative Method of HEI

2.5.1. AHP Method to Determine Index Weight

An analytic hierarchy process (AHP) [25] is a practical and effective method to deal with multi-objective, multi criteria, multifactor and multilevel complex problems. It is a system analysis method combining qualitative and quantitative analysis. Its basic principle is to decompose the complex problems to be identified into several levels. The experts and decision-makers graded the listed indices layer-by-layer by comparing the importance of the two, and determined the contribution

of the lower-level indices to the upper-level indices by calculating the feature vector of the judgment matrix, so as to determine the importance of the basic-level indices to the overall objectives. The index weight was determined by the AHP method.

2.5.2. Comprehensive Optimization Method Based on Fuzzy Consistent Matrix and AHP

More and more fuzzy mathematics methods [26–28] are used in project investment decision-making. For multi-objective and multilevel fuzzy comprehensive optimization, firstly, the scheme set V and the index set H and U need to be determined; secondly, a fuzzy consistent matrix is constructed to calculate the scheme optimization value under a single index; finally, according to the weight of each sub-index, the overall scheme is optimized.

(1) Determine scheme set V and index set H and U .

Let decision domain V be a set of schemes (regions) to form a set of optimal schemes.

$$V = \{\text{region}_1, \text{region}_2, \dots, \text{region}_m\} = \{v_1, v_2, \dots, v_m\}$$

The indices that have an impact on HEI values of each region are as follows:

The first-grade index set is $H = \{H_1 = H_2, \dots, H_q\}$. When the first-grade indices is $H_i (1 \leq i \leq q)$, the corresponding second-grade index set is $U = \{U_{i1}, U_{i2}, \dots, U_{in}\}$.

(2) Construction of a fuzzy consistent matrix and the calculation of a scheme optimization value under a single index.

As m schemes are optimized under n indices, n single index fuzzy priority relation matrices can be established; $B^k = (b_{ij}^k)_{m \times m} (k = 1, 2, \dots, n)$, where b_{ij}^k is the priority relation coefficient of V_i to V_j under the U_k index.

$$b_{ij}^k = \begin{cases} 0, & \text{Under index } u_k, v_j \text{ is better than } v_i; \\ 0.5, & \text{Under index } u_k, v_j \text{ is as good as } v_i; \\ 1, & \text{Under index } u_k, v_i \text{ is better than } v_j; \end{cases} \quad (8)$$

$$B^k = \begin{bmatrix} b_{11}^k & b_{12}^k & \dots & b_{1m}^k \\ b_{21}^k & b_{22}^k & \dots & b_{2m}^k \\ \vdots & \vdots & \dots & \vdots \\ b_{m1}^k & b_{m2}^k & \dots & b_{mm}^k \end{bmatrix} = \begin{bmatrix} 0.5 & b_{12}^k & \dots & b_{1m}^k \\ b_{21}^k & 0.5 & \dots & b_{2m}^k \\ \vdots & \vdots & \dots & \vdots \\ b_{m1}^k & b_{m2}^k & \dots & 0.5 \end{bmatrix} \quad (9)$$

Constraint conditions: $1 \leq i \leq m, 1 \leq j \leq m, 1 \leq k \leq n$

Building fuzzy consistent matrix $R^k = (r_{ij}^k)_{m \times m}$:

$$R^k = \begin{bmatrix} r_{11}^k & r_{12}^k & \dots & r_{1m}^k \\ r_{21}^k & r_{22}^k & \dots & r_{2m}^k \\ \vdots & \vdots & \dots & \vdots \\ r_{m1}^k & r_{m2}^k & \dots & r_{mm}^k \end{bmatrix} \quad (10)$$

where

$$r_{ij}^k = \frac{r_i^k - r_j^k}{2m} + 0.5 \quad (11)$$

$$r_i^k = \sum_{l=1}^m b_{il}^k \quad (1 \leq i \leq m) \quad (12)$$

The method to calculate the optimal value of scheme V_i under U_K index is the root method.

$$S_i^k = \left(\prod_{l=1}^m r_{il}^k \right)^{\frac{1}{m}} \quad (1 \leq i \leq q \quad 1 \leq k \leq n) \quad (13)$$

(3) Optimization of overall scheme.

Use the AHP method to get the second-grade index weight and meet the requirements of $\sum_{k=1}^n \omega_k = 1$. The comprehensive superior degree values of each scheme were computed as shown in Equation (14):

$$S^{H_i} = \begin{bmatrix} S_i^1 & S_i^2 & \cdots & S_i^n \end{bmatrix} \begin{bmatrix} \omega_1 \\ \omega_2 \\ \vdots \\ \omega_n \end{bmatrix} \quad (1 \leq i \leq q) \quad (14)$$

Use the AHP method to get the first-grade index weight and meet the requirements of $\sum_{k=1}^q \omega_k = 1$. The overall optimal value of the upper level was computed as shown in Equation (15):

$$S = \begin{bmatrix} S^{H_1} & S^{H_2} & \cdots & S^{H_q} \end{bmatrix} \begin{bmatrix} \omega_1 \\ \omega_2 \\ \vdots \\ \omega_q \end{bmatrix} = \begin{bmatrix} S_1 & S_2 & \cdots & S_m \end{bmatrix} \quad (15)$$

2.6. Level Classification of HEI

In a comprehensive consideration of regional and interindustry development levels, the HEI values were divided into five levels according to expert opinions. These were, respectively, the excellent level ($0.85 \leq HEI < 1.00$), the good level ($0.70 \leq HEI < 0.85$), the fair level ($0.60 \leq HEI < 0.75$), the bad level ($0.45 \leq HEI < 0.60$) and the poor level ($0 < HEI < 0.45$). Similar to the short plate theory, when the HEI value is lower than 0.6, the investment should be inclined to provide comprehensive benefits.

3. Case Study

3.1. Research Area

The Beijing-Hangzhou Canal starts in Beijing in the north, passes through Tianjin, Hebei, Shandong and Jiangsu, and ends in Hangzhou, Zhejiang Province, in the south. It runs through five major water systems, namely the Haihe River, Yellow River, Huaihe River, Yangtze River and Qiantang River, with a total length of nearly 1800 km.

The North Jiangsu Canal is located in the middle of the Beijing-Hangzhou Canal, starting from Linjiaba in Xuzhou City in the north and ending at Liuweikou in Yangzhou City in the south, with a total length of 404 km and a total water level drop of 31 m. It is a comprehensive channel with the highest level (Level 2 channel) in the accessible reach of the Beijing-Hangzhou Canal and with the most benefits. It can be used for the navigation of 2000-ton ships. In recent years, the average annual cargo was more than 300 million tons, and good economic benefits have been achieved through water transportation. The location is shown in Figure 5.

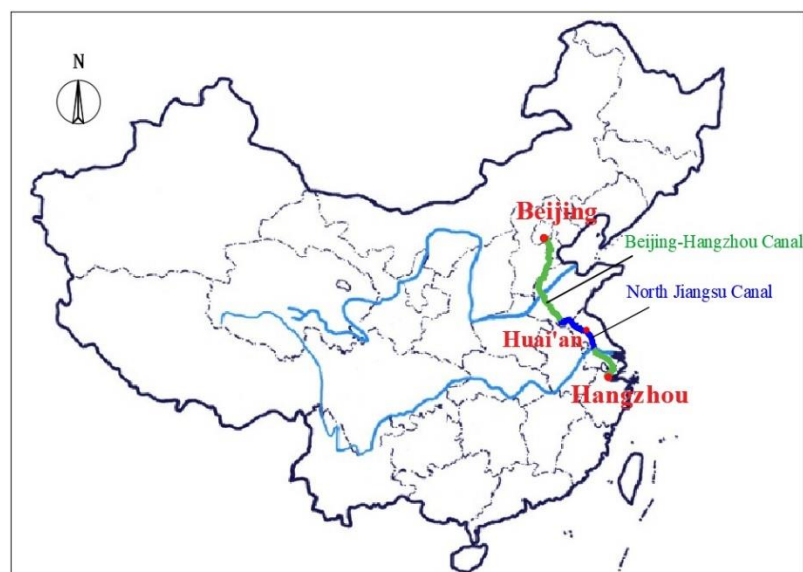


Figure 5. The North Jiangsu Canal location map.

3.2. Quantification Indices

Since the comprehensive regulation of the North Jiangsu Canal began in 2008, this paper takes 2008 as the initial year of research. According to the HEI quantification indices in waterway engineering (Table 1), combined with the actual situation of the North Jiangsu Canal, hub economy quantification indices for waterway engineering in the North Jiangsu Canal are constructed; the specific indices are as shown in Table 2.

Table 2. The hub economy quantification indices of waterway engineering in the North Jiangsu Canal.

First-Grade Indices	Serial Number	Unit	Second-Grade Indices
H_1	U_{11}	m	Damaged length of channel revetment
	U_{12}	m^3	Channel dredging
	U_{13}	%	Failure rate of lock mechanical equipment
	U_{14}	%	Failure rate of electrical equipment
	U_{15}	set	Number of intelligent supervision devices
H_2	U_{21}	set	Number of intelligent software
	U_{22}	%	Proportion of waterway transportation busy time
	U_{23}	%	Qualified rate of regular training for employees
	U_{24}	%	Greening rate on both sides of waterway
	U_{25}	%	Crew satisfaction

Taking the R_1 , R_2 , R_3 and R_4 waterways in the North Jiangsu Canal area as examples, an investment decision-making analysis of waterway engineering is carried out. The North Jiangsu Canal system map can be seen in Figure 6.

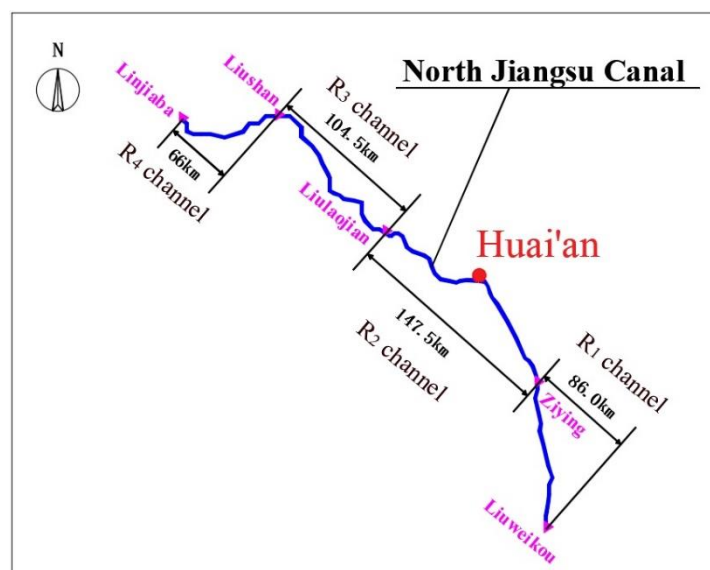


Figure 6. The North Jiangsu Canal system map.

R₁ channel: 86-km channel from Ziyongzha of Gaoyou City to Liuweikou of the Yangtze River. R₂ channel: 147.5-km channel from Liulaojian lock to Ziyongzha of Gaoyou City. R₃ channel: 104.5-km channel from Liushan lock to Liulaojian lock. R₄ channel: 66-km channel from Linjiaba lock to Liushan lock.

The HEI values of the North Jiangsu Canal waterway engineering are as shown in Table 3.

Table 3. The hub economy quantification indices values of waterway engineering for the North Jiangsu Canal in 2008.

First-Grade Indices	Unit	Second-Grade Indices	R ₁	R ₂	R ₃	R ₄
H ₁	m	Damaged length of channel revetment	5636	6895	8650	5990
	m ³	Channel dredging	36	69	58	50
	%	Failure rate of lock mechanical equipment	2.6	2.3	2.2	2.2
	%	Failure rate of electrical equipment	3.6	5.6	4.6	4.8
	set	Number of intelligent supervision devices	32	33	36	32
H ₂	set	Number of intelligent software	6	8	8	8
	%	Proportion of waterway transportation busy time	36	35	30	20
	%	Qualified rate of regular training for employees	98	90	95	92
	%	Greening rate on both sides of waterway	95	90	88	89
	%	Crew satisfaction	99	96	98	96

3.3. Weight Values Calculation

3.3.1. Calculate the Optimal Value of Each Jurisdiction under the H₁ Index

(1) Calculate the optimal value under each sub-index of H₁.

For sub-index U₁₁, “Damaged length of channel revetment,” the priority matrix is established according to Equation (9):

$$B^1 = \begin{bmatrix} 0.5 & 0 & 0 & 0 \\ 1 & 0.5 & 0 & 1 \\ 1 & 1 & 0.5 & 1 \\ 1 & 0 & 0 & 0.5 \end{bmatrix}$$

According to Equation (10), the fuzzy consistent matrix is transformed:

$$R^1 = \begin{bmatrix} 0.5 & 0.25 & 0.125 & 0.375 \\ 0.75 & 0.5 & 0.375 & 0.625 \\ 0.875 & 0.625 & 0.5 & 0.75 \\ 0.625 & 0.375 & 0.25 & 0.5 \end{bmatrix}$$

According to Equation (13), the optimal value of each scheme under the first sub-index U_{11} is calculated:

$$S_1^1 = (0.2767 \quad 0.5445 \quad 0.6729 \quad 0.4137)^T$$

Similarly, the optimal value of each scheme under A_2 – A_5 is calculated.

$$S_1^2 = (0.2767 \quad 0.6729 \quad 0.5445 \quad 0.4137)^T$$

$$S_1^3 = (0.6739 \quad 0.5456 \quad 0.3479 \quad 0.3479)^T$$

$$S_1^4 = (0.2767 \quad 0.6729 \quad 0.4137 \quad 0.5445)^T$$

$$S_1^5 = (0.3479 \quad 0.5456 \quad 0.6739 \quad 0.3479)^T$$

(2) Calculate the weight values under each sub-index.

Under the H_1 index of tangible hub, the judgment matrix of U_{11} – U_{15} is as follows:

$$B_1 = \begin{bmatrix} 1 & 3/2 & 2 & 5/2 & 3 \\ 2/3 & 1 & 5/4 & 5/3 & 2 \\ 1/2 & 4/5 & 1 & 4/3 & 3/2 \\ 2/5 & 3/5 & 3/4 & 1 & 6/5 \\ 1/3 & 1/2 & 2/3 & 5/6 & 1 \end{bmatrix}$$

The maximum eigenvalue of judgment matrix B_1 is $\lambda_{\max} = 5.0007$ and the corresponding eigenvector is $(0.7137 \quad 0.4697 \quad 0.3662 \quad 0.2818 \quad 0.2379)^T$.

Check consistency:

$$CI = 0.000175.$$

$$CR = CI/RI = 0.000175/1.12 = 0.000175 < 0.1.$$

Therefore, the judgment matrix has good consistency.

The weight vector of each sub-index after normalization is $(0.3448 \quad 0.2270 \quad 0.1770 \quad 0.1362 \quad 0.1150)^T$.

(3) Calculate the optimal values of each jurisdiction under the H_1 index.

$$S^{H_1} = \begin{bmatrix} 0.2767 & 0.2767 & 0.6739 & 0.2767 & 0.3479 \\ 0.5445 & 0.6729 & 0.5456 & 0.6729 & 0.5456 \\ 0.6729 & 0.5445 & 0.3479 & 0.4137 & 0.6739 \\ 0.4137 & 0.4137 & 0.3479 & 0.5445 & 0.3479 \end{bmatrix} \begin{bmatrix} 0.3448 \\ 0.2270 \\ 0.1770 \\ 0.1362 \\ 0.1150 \end{bmatrix} = \begin{bmatrix} 0.3552 \\ 0.5915 \\ 0.5511 \\ 0.4123 \end{bmatrix}$$

3.3.2. Calculate the Optimal Values of Each Jurisdiction under the H₂ Index

The method is the same as above. The optimal values of each jurisdiction under the H₂ index are as follows:

$$S^{H_2} = \begin{bmatrix} 0.2973 & 0.6729 & 0.6729 & 0.6729 & 0.6739 \\ 0.5533 & 0.5445 & 0.2767 & 0.5445 & 0.3479 \\ 0.5533 & 0.4137 & 0.5445 & 0.2767 & 0.5456 \\ 0.5533 & 0.2767 & 0.4137 & 0.4137 & 0.3479 \end{bmatrix} \begin{bmatrix} 0.3610 \\ 0.2235 \\ 0.1742 \\ 0.1341 \\ 0.1072 \end{bmatrix} = \begin{bmatrix} 0.5375 \\ 0.4799 \\ 0.4826 \\ 0.4264 \end{bmatrix}$$

3.4. HEI Values Calculation

According to the weight values of H₁ and H₂ determined by the AHP method, the weight values $W_{H_1(T)}$ and $W_{H_2(T)}$ of H₁ and H₂ are 0.7 and 0.3, respectively. The corresponding tangible hub degree and intangible hub degree values of each jurisdiction were calculated. The HEI level of four jurisdictions of the North Jiangsu Canal were determined according to the level classification of HEI. The specific hub economy results of each jurisdiction are as shown in Table 4.

Table 4. Calculation of the hub economic degree values for different jurisdiction in 2008.

Jurisdiction	R ₁	R ₂	R ₃	R ₄
H _{1(T)}	0.3552	0.5915	0.5511	0.4123
H _{2(T)}	0.5375	0.4799	0.4827	0.4264
HEI	0.4099	0.5580	0.5306	0.4165
HEI level	the poor level	the bad level	the bad level	the poor level

4. Results

4.1. Calculation Results of the Overall HEI Values for the North Jiangsu Canal

The final weight values are W_{R1} , W_{R2} , W_{R3} and W_{R4} , respectively. The weight values are 0.19, 0.30, 0.26 and 0.25 through the AHP method.

The overall HEI values of the North Jiangsu Canal are calculated according to Equations (3)–(5). The main results are as shown in Table 5.

Table 5. Calculation of the overall HEI values for the North Jiangsu Canal in 2008.

Basin	North Jiangsu Canal
H _{1(T)}	0.3439
H _{2(T)}	0.1435
HEI	0.4874
HEI level	the bad level

According to the calculation, the HEI value of the North Jiangsu Canal was 0.4874 in 2008, which is in the worse category. It is necessary to continue to invest in tangible hubs and intangible hubs. At the same time, in order to improve the intelligent maintenance of the North Jiangsu Canal project and the intelligence level of ships passing through the gate, the investment should be in line with the intangible hub.

4.2. Calculation of Investment Proportion in Different Jurisdictions of the North Jiangsu Canal

The specific investment proportion of different jurisdictions of the North Jiangsu Canal are calculated according to Equations (6) and (7), and the main results are as shown in Table 6.

Table 6. Investment proportion of the North Jiangsu Canal for different jurisdictions.

Jurisdiction	R ₁	R ₂	R ₃	R ₄
P _{H1(T)}	0.6066	0.7420	0.7271	0.6929
P _{H2(T)}	0.3934	0.2580	0.2729	0.3071

4.2.1. Investment Plan for Waterway Engineering Based on HEI Values (2008–2018)

According to Table 5, the HEI level is in the bad category. The North Jiangsu Canal needs more capital investment to improve its operational capacity and further improve its connectivity with other industries. According to the investment plan, the investment in 2008 was 30.68 million US dollars. According to the weight and specific investment proportion of different jurisdictions, the investment situation of each jurisdiction is as shown in Table 7.

Table 7. Investment results of the North Jiangsu Canal for different jurisdictions based on the HEI model (2008) in millions of US dollars.

Basin	Whether to Invest	R ₁	R ₂	R ₃	R ₄
Total investment	Invest	5.83	9.20	7.98	7.67
Investment in tangible assets	Invest	3.54	6.83	5.80	5.31
Investment in intangible assets	Invest	2.29	2.37	2.18	2.36

4.2.2. HEI Values Trend in the North Jiangsu Canal (2008–2018)

According to Equation (3), the overall HEI values from 2008 to 2018 were calculated, and the values are as shown in Table 8.

Table 8. Calculation of the overall HEI values for the North Jiangsu Canal (2008–2018).

YEAR	2008	2009	2010	2011	2012	2013
HEI	0.48	0.50	0.56	0.56	0.57	0.56
YEAR	2014	2015	2016	2017	2018	
HEI	0.56	0.57	0.58	0.62	0.62	

5. Discussion

5.1. Validation of Investment Decision in 2008

According to Table 7, the modeled and the actual investment based on HEI are as shown in Table 9.

Table 9. Comparison of modeled and actual investment (2008) in million dollars (US\$).

Basin	North Jiangsu Canal		
	Whether to Invest	Investment in Tangible Assets	Investment in Intangible Assets
Actual investment	Invest	22.10	8.58
Model	Invest	21.48	9.20
Percentage comparison (%)	/	2.8	7.2

Through the comparison between the actual investment and the calculated value of the HEI investment model, the deviation of the tangible investment is 2.8% lower, and that of the intangible hub investment is 7.2% higher, which is basically in line with the actual situation.

5.2. The Trend Analysis of HEI from 2008 to 2018

It can be seen from Table 8 that the HEI values increased rapidly from 0.48 to 0.56 from 2008 to 2010. The reason is that the government invested a lot of money in the North Jiangsu Canal, and the whole line of the North Jiangsu Canal reached the level of a second-class channel, with more than 2000 tons of navigable cargo. From 2011 to 2016, the HEI values were relatively stable, which shows that the engineering measures invested on in the early stage played a certain role. From 2017 to 2018, the HEI values made a breakthrough, because the construction of the North Jiangsu Canal was upgraded from an engineering construction to a smart channel construction, and the investment in an intelligent and ecological channel increased, which indicates that the North Jiangsu Canal is moving forward to become a green and smart channel. At the same time, the logistics system has been continuously improved to build a comprehensive transportation hub based on the North Jiangsu Canal. However, the absolute value of HEI is still relatively low, and there is still much room for improvement.

5.3. Analysis and Comparison of Contribution Rate of Each Second-Grade Index to HEI Value

The contribution rate is computed as shown in Equation (16).

$$C_{in} = \frac{H_{u_{in}}}{HEI} \quad (1 \leq i \leq 2 ; 1 \leq n \leq 5) \quad (16)$$

where C_{in} is the contribution rate, $H_{u_{in}}$ is the optimal value of each secondary index, and HEI is the hub economy value.

Take the calculation of the contribution rate of U_{11} to the HEI value of R_1 as an example, according to the data in Sections 3.3 and 3.4, $C_{11} = 0.2767 \times 0.3448 \times 0.7 / 0.4099 \times 100\% = 16.29\%$. The contribution rate corresponding to other indices can be calculated similarly. The results of the contribution rate are as shown in Table 10.

Table 10. Contribution rate of each second-grade index to the HEI value (%).

First-Grade Indices	Serial Number	Second-Grade Indices	R_1	R_2	R_3	R_4
H_1	U_{11}	Damaged length of channel revetment	16.29	23.56	30.62	23.98
	U_{12}	Channel dredging	10.73	19.16	16.31	15.78
	U_{13}	Failure rate of lock mechanical equipment	20.37	12.11	8.12	10.35
	U_{14}	Failure rate of electrical equipment	6.44	11.50	7.43	12.46
	U_{15}	Number of intelligent supervision devices	6.83	7.87	10.22	6.72
H_2	U_{21}	Number of intelligent software	7.86	10.74	11.29	14.39
	U_{22}	Proportion of waterway transportation busy time	11.01	6.54	5.23	4.45
	U_{23}	Qualified rate of regular training for employees	8.58	2.59	5.36	5.19
	U_{24}	Greening rate on both sides of waterway	6.61	3.93	2.10	4.00
	U_{25}	Crew satisfaction	5.29	2.01	3.31	2.69

It can be seen from Table 10 that the contribution rate of the secondary indices in different regions to the HEI is different. Generally speaking, the contribution rate of channel revetment (U_{11}), channel dredging (U_{12}), intelligent software (U_{21}) and mechanical equipment (U_{13}) to the HEI is higher, while the contribution rate of crew satisfaction (U_{25}) and greening rate (U_{24}) to the HEI is slightly lower.

5.4. Analysis of the Relationship between the Hub Economy and Other Industries

In order to understand the position of waterway engineering in the hub economy and optimize investment behavior in transportation systems, this paper selects a representative expressway, a high-speed railway and aviation engineering for analysis. The calculation method is the same as that for the waterway engineering HEI. Different industries choose corresponding indices after extensive

discussion by experts and engineers; the details are as follows: (1) expressway engineering, H_1 (Damaged length of highway, Quantity of bridge maintenance, Failure rate of mechanical equipment, Failure rate of electrical equipment, Number of intelligent supervision devices), and H_2 (Number of intelligent software, Toll station traffic efficiency, Qualified rate of regular training for employees, Greening rate of Expressway, Driver satisfaction); (2) high-speed railway engineering, H_1 (Line maintenance length, Building maintenance quantity, Failure rate of mechanical equipment, Failure rate of communication equipment, Number of intelligent supervision devices), and H_2 (Number of intelligent software, Punctuality rate, Qualified rate of regular training for employees, Railway greening rate, Passenger satisfaction); (3) aviation engineering, H_1 (Runway maintenance length, Green maintenance area, Failure rate of mechanical equipment, Failure rate of electrical equipment, Number of intelligent supervision devices), and H_2 (Number of intelligent software, Punctuality rate, Qualified rate of regular training for employees, Greening rate of Airport Road, Passenger satisfaction). Figure 7 shows the variation trends in the HEI for various industries from 2008 to 2018.

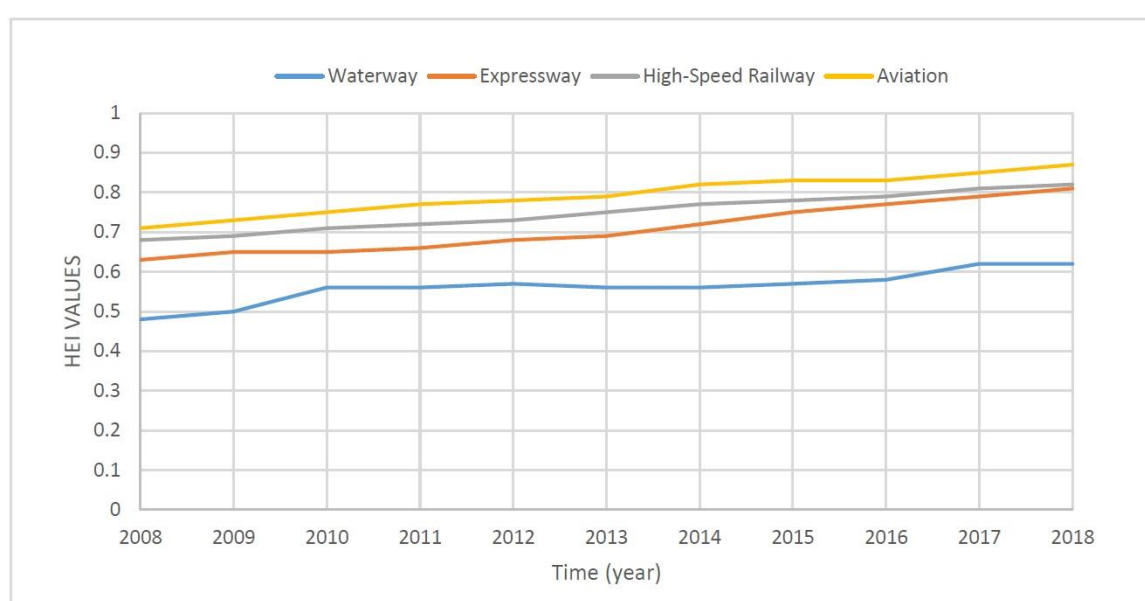


Figure 7. Variation trends in HEI for various industries in transportation system.

As can be seen from Figure 7, the HEI values of the different industries in the transportation system show a trend of steady growth. The overall HEI value of aviation engineering is the highest—the interval is at (0.71, 0.87), which is near the excellent level; the high-speed railway is in second place with the interval at about (0.68, 0.82), which is rising from a fair level to a good level; and the expressway interval is at (0.63, 0.81), which is rapidly rising from a fair level to the good level. The overall HEI value of waterway engineering is relatively low, at (0.48, 0.62), which is between the bad level and the fair level. According to the hub theory, in order to make the comprehensive benefits of the transportation industry larger, the water transportation industry needs to increase its investment to narrow the gap.

6. Conclusions

The North Jiangsu Canal is an important waterway in China, with a large number of ships passing through it. When the government makes investment decisions on traffic engineering, due to the limited funds, it often takes subjective judgment on the allocation of engineering funds, which affects the sustainable development of waterway engineering. In this paper, an investment method for sustainable development of waterway engineering based on the quantitative index of hub economy is proposed. The HEI and quantification methods described in this study are complimentary to the theoretic discussions of hub economy in other studies, which is an important contribution. Based

on the values of HEI and the contribution rate of secondary indices to the HEI, government decision makers can allocate funds more scientifically and quickly. At the same time, as the hub economy involves three stages of sustainable development, with the extension of secondary investment, it can help to improve the convenience of additional investment into the tangible hub and intangible hub, and improve the level of intelligent construction of the North Jiangsu Canal.

As time goes on, the weight value between the tangible hub and the intangible hub should change accordingly. Generally speaking, in the early stage of development, the proportion of the tangible hub is relatively large. In the middle stage of development, the proportions of the tangible hub and the intangible hub are similar. In the middle and late stages of development, due to the accumulated investment in the project in the early stages, the construction of engineering measures is basically complete and the proportion of investment in the intangible hub should be increased. The HEI value of the North Jiangsu Canal is 0.62 in 2018. The North Jiangsu Canal has changed from an engineering construction to an intelligent channel construction phase. According to the three stages of hub economy, the North Jiangsu Canal is in transition from the first stage to the second stage. The North Jiangsu Canal should seize the opportunities of the hub economy, strengthen its integrated development with the local economy, carry out quality construction and contribute to the development of Jiangsu's hub economy.

There are many important traffic engineering projects in the world. Due to the different project characteristics, the index system should be changed appropriately so that the HEI can meet the sustainable development characteristics of the local engineering. The quantification of the HEI is helpful to the investment decision-making of major transportation projects, and to improve the sustainable development level of different projects.

Author Contributions: Conceptualization, J.R.; methodology, J.R. and Y.W.; software, J.R. and Y.W.; validation, J.R. and Y.W.; formal analysis, J.R. and Y.W.; investigation, J.R.; resources, J.R.; data curation, J.R. and Y.W.; writing—original draft preparation, J.R.; writing—review and editing, J.R., G.M., F.Z. and Y.W.; visualization, J.R. and Y.W.; supervision, J.R.; project administration, J.R.; funding acquisition, J.R., G.M. and Y.W. All authors have read and agreed to the published version of the manuscript.

Funding: This research was funded by Foundation of the research institute of grand canal cultural belt construction (No. DYH19YB01), Natural Science Foundation of Shandong Province, China (No. ZR2018BEE050), Humanities and Social Sciences Foundation of the Chinese Ministry of Education (No.18YJA790061) and Social Science Foundation of Jiangsu Province (No.18EYB008).

Acknowledgments: The authors are grateful for the comments and reviews from the reviewers and editors.

Conflicts of Interest: The authors declare no conflict of interest.

References

1. Thoft-Christensen, P. Infrastructures and life-cycle cost-benefit analysis. *Struct. Infrastruct. Eng.* **2012**, *8*, 507–516. [\[CrossRef\]](#)
2. Yu, B.; Zhang, C.; Jiang, Y.; Li, Y.; Zhou, H. Conjunctive use of Inter-Basin Transferred and Desalinated Water in a Multi-Source Water Supply System Based on Cost-Benefit Analysis. *Water Resour. Manag.* **2017**, *31*, 3313–3328. [\[CrossRef\]](#)
3. Habibzadeh-Bigdarvish, O.; Yu, X.; Lei, G.; Li, T.; Puppala, A. Life-Cycle cost-benefit analysis of Bridge deck de-icing using geothermal heat pump system: A case study of North Texas. *Sustain. Cities Soc.* **2019**, *47*, 101492. [\[CrossRef\]](#)
4. Teng, J.; Huang, W.; Lin, M. Systematic budget allocation for transportation construction projects: A case in Taiwan. *Transportation* **2010**, *37*, 331–361. [\[CrossRef\]](#)
5. You, S.; Tan, Z. Study on transportation investment planning models from industrial and regional aspects. *Syst. Eng. Theory Pract.* **2019**, *39*, 2421–2428.
6. Wang, S.; Yin, L.; Feng, L. Research and application of selection method of expressway investment project based on AHP. *Shandong Commun. Technol.* **2018**, *2*, 96–100.
7. Ren, Q.; Wu, F. Analysis on the effectiveness of Jiangsu inland waterway investment based on DEA. *Chin. Foreign Entrep.* **2011**, *19*, 67–71.

8. Li, Y.; Fan, J.; Deng, H. Analysis of Regional Difference and Correlation between Highway Traffic Development and Economic Development in China. *Transp. Res. Rec.* **2018**, *2672*, 12–25. [\[CrossRef\]](#)
9. You, S.; Tan, Z. Regional differentiated development strategy and model of transportation. In Proceedings of the 19th COTA International Conference of Transportation Professionals, Nanjing, China, 6–8 July 2019; American Society of Civil Engineers (ASCE): Reston, VA, USA, 2019; pp. 5235–5246.
10. Yu, H.; Pu, Y.; Liu, H.; Wang, Z. Regional transportation investment structure optimization under economic distribution pattern. *J. Shanghai Jiaotong Univ.* **2015**, *49*, 450–456.
11. Lin, X.; Yang, J.; Tao, Z.; Song, J.; Ren, T. Transport investment, economic spatial aggregation, and multiple paths: A joint estimation by spatial panel and structural equation modeling. *Acta Geogr. Sin.* **2018**, *73*, 1970–1984.
12. Vega, H.; Penne, L. Governance and institutions of transportation investments in U.S. mega-regions. *Transport* **2008**, *23*, 279–286. [\[CrossRef\]](#)
13. Yuan, L.; Wang, Y.; Huang, H. Game analysis on urban rail transit project under governmental investment regulation. *Open Constr. Build. Technol. J.* **2016**, *10*, 369–378. [\[CrossRef\]](#)
14. Hendren, P.; Debbie, A. Evaluating the effectiveness of state department of transportation investment decisions: Linking performance measures to resource allocation. *J. Infrastruct. Syst.* **2006**, *12*, 216–229. [\[CrossRef\]](#)
15. Fichert, F. Transport policy planning in Germany—An analysis of political programs and investment masterplans. *Eur. Transp. Res. Rev.* **2017**, *9*, 28. [\[CrossRef\]](#)
16. Epstein Barry, J.; Jermakowicz, E.K. *WILEY Interpretation and Application of International Financial Reporting Standards 2010*; John Wiley & Sons, Inc.: Hoboken, NJ, USA, 2010.
17. Chareonsuk, C.; Chansa-ngavej, C. Intangible asset management framework for long-term financial performance. *Ind. Manag. Data Syst.* **2008**, *108*, 5–6. [\[CrossRef\]](#)
18. Shen, Y.; Guo, X. Decision-making index system of overseas terminal investment layout based on AHP model. *Port Waterw. Eng.* **2019**, *9*, 32–36.
19. Wang, H. Performance evaluation index system of green highway project management. *Henan Build. Mater.* **2018**, *6*, 195–198.
20. Fernandes, P. Integrating road traffic externalities through a sustainability indicator. *Sci. Total Environ.* **2019**, *691*, 483–498. [\[CrossRef\]](#)
21. Yang, C.; Wei, Y. Indexes of Sustainable Urban Transport Based on a Consideration of Residents' Living Quality. *J. Tongji Univ. (Nat. Sci.)* **2013**, *41*, 1497–1501.
22. Maceika, A.; Šostak, O.R. Delphi method application for engineering. In Proceedings of the 11th International DAAAM Baltic Conference “INDUSTRIAL ENGINEERING”, Tallinn, Estonia, 20–22 April 2016; pp. 48–53.
23. Xu, L.; Zhu, H. Post evaluation model of water transport infrastructure project based on grey fuzzy theory. *Port Waterw. Eng.* **2011**, *4*, 24–27.
24. Leng, H.; Xiang, Q.; Ning, J.; Yan, L. Research on the index system for evaluating safety state of freeway infrastructure. In Proceedings of the 2010 International Conference of Logistics Engineering and Management, Chengdu, China, 8–10 October 2010; American Society of Civil Engineers (ASCE): Reston, VI, USA, 2010; Volume 387, pp. 3959–3965.
25. Han, Y.; Yan, X. Project evaluation model based on group decision-making vector optimization of AHP algorithm. *Metall. Min. Ind.* **2015**, *7*, 144–150.
26. Zhang, S.; Ma, R.; Mo, X.; Fang, L. Comprehensive evaluation on sustainable development of the trunk road network based on fuzzy AHP. *Appl. Mech. Mater.* **2013**, 2020–2024. [\[CrossRef\]](#)
27. Wang, L.; Wang, X. The application of fuzzy analytic hierarchy process based on fuzzy consistent matrix in the optimal scheme of anchorage. *China Water Transp.* **2016**, *16*, 217–218.
28. Kong, B. The application of the improved multi-objective and multi-level fuzzy evaluation method in the comprehensive evaluation of the benefits of water-saving transformation in irrigation area group. *Tech. Superv. Water Resour.* **2018**, *1*, 160–162.
29. Ding, Y.; Tang, D.; Dai, H.; Wei, Y. Human water harmony index: A New Approach to Assess the Human Water Relationship. *Water Resour. Manag.* **2014**, *28*, 1061–1077. [\[CrossRef\]](#)
30. Ming, W. Combination of logistics channel and hub to promote hub economic development. *Marit. China* **2018**, *11*, 44–45.

31. Ustadi, M.N.; Shopi, N.A.M. A Study towards the Efficiency of Public Transportation Hub Characteristics: A Case Study of Northern Region, Peninsular Malaysia. *Procedia Econ. Financ.* **2016**, *35*, 612–621. [[CrossRef](#)]
32. Torkestani, S.S.; Seyedhosseini, S.M.; Makui, A.; Shahanaghi, K. The reliable design of a hierarchical multi-modes transportation hub location problems (HMMTHLP) under dynamic network disruption (DND). *Comput. Ind. Eng.* **2018**, *122*, 39–86. [[CrossRef](#)]
33. Sun, H. Discussion on operation mode of comprehensive transportation hub. *China Policy Rev.* **2018**, *5*, 71–73.
34. Yao, L.; Xia, X.; Sun, L. Transfer Scheme Evaluation Model for a Transportation Hub based on Vectorial Angle Cosine. *Sustainability* **2014**, *6*, 4152–4162. [[CrossRef](#)]
35. Shao, M.; Xie, C.; Sun, L.; Jiang, L. Optimal Layout of Static Guidance Information in Comprehensive Transportation Hubs Based on Passenger Pathfinding Behavior. *Sustainability* **2019**, *11*, 3684. [[CrossRef](#)]
36. Jiang, C.; Zhang, A. Effects of high-speed rail and airline cooperation under hub airport capacity constraint. *Transp. Res. Part. B Methodol.* **2014**, *60*, 33–49. [[CrossRef](#)]
37. Yao, S.; Yu, C. On the new development level of urban hub economy. *Urban. Plan. Forum.* **2002**, *5*, 17–19.
38. Mao, K.; Fan, Y. China needs to make clear the direction and path of hub economic development. *China Econ. Trade Herald.* **2017**, *10*, 58–60.
39. Zhao, J. An analysis of the factors influencing the development of Henan hub economy. *China J. Commer.* **2018**, *12*, 161–162.
40. Sun, G. Research on transportation support system of freight hub based on urban hub economy. In Proceedings of the 2019 China Urban Planning Annual Meeting, Beijing, China, 28–29 June 2019; Urban Planning Society of China and Chongqing Municipal People's Government: Chongqing, China, 2019; Volume 10, pp. 500–506. [[CrossRef](#)]
41. Hák, T.; Janoušková, S.; Moldan, B. Sustainable Development Goals: A need for relevant indicators. *Ecol. Indic.* **2016**, *60*, 565–573. [[CrossRef](#)]
42. Xie, Y.; Lu, C.; Wang, M. Constructing national logistics hub network and reconstructing high quality transportation pattern. *New Silk Road Horiz.* **2019**, *10*, 22–24.
43. Liu, J.; Fu, H.; Guo, Z. Comprehensive Frequency Analytic Approach and Its Application on the Multi-target Orthogonal Test Design. *Value Eng.* **2016**, *24*, 124–126.



© 2020 by the authors. Licensee MDPI, Basel, Switzerland. This article is an open access article distributed under the terms and conditions of the Creative Commons Attribution (CC BY) license (<http://creativecommons.org/licenses/by/4.0/>).