

Figure S1. Colony morphology of the five-day bacterial cultures with/without phosphate solubilizing capability on tricalcium phosphate-containing medium. Three replications of each isolate were performed on the same plate.

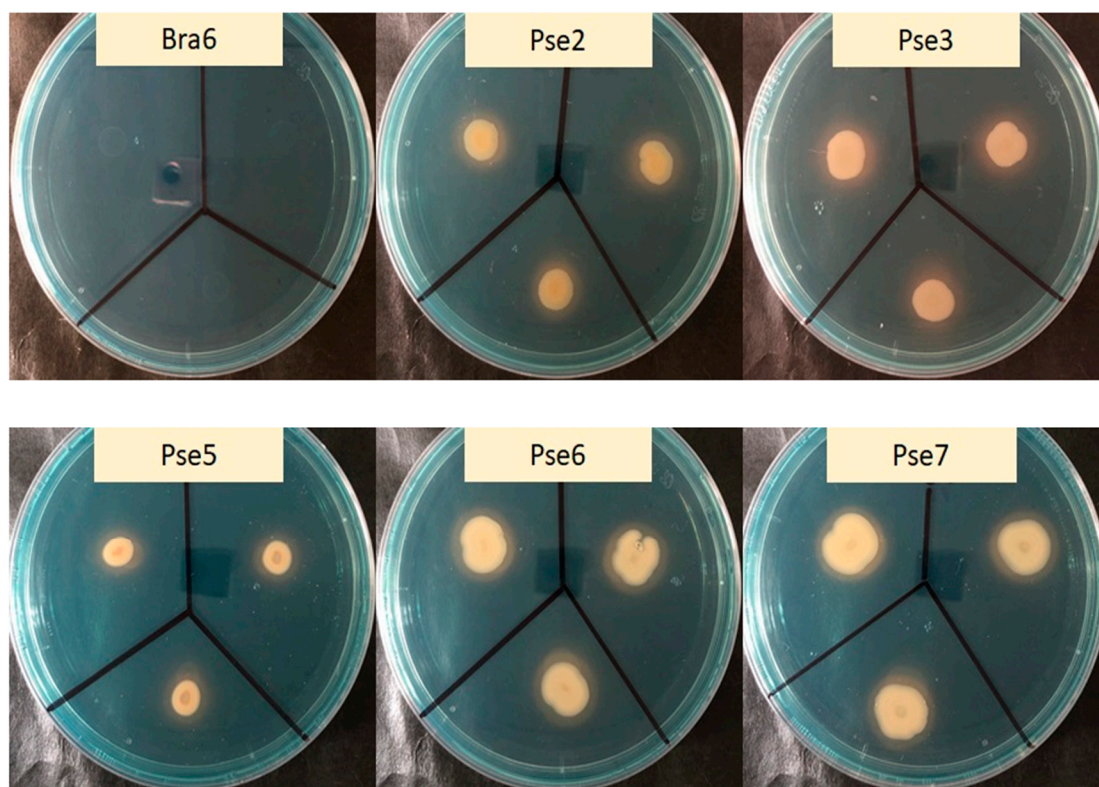


Figure S2. Colony morphology of the five-day bacterial cultures with/without siderophore producing capability on CAS medium. Three replications of each isolate were performed on the same plate.

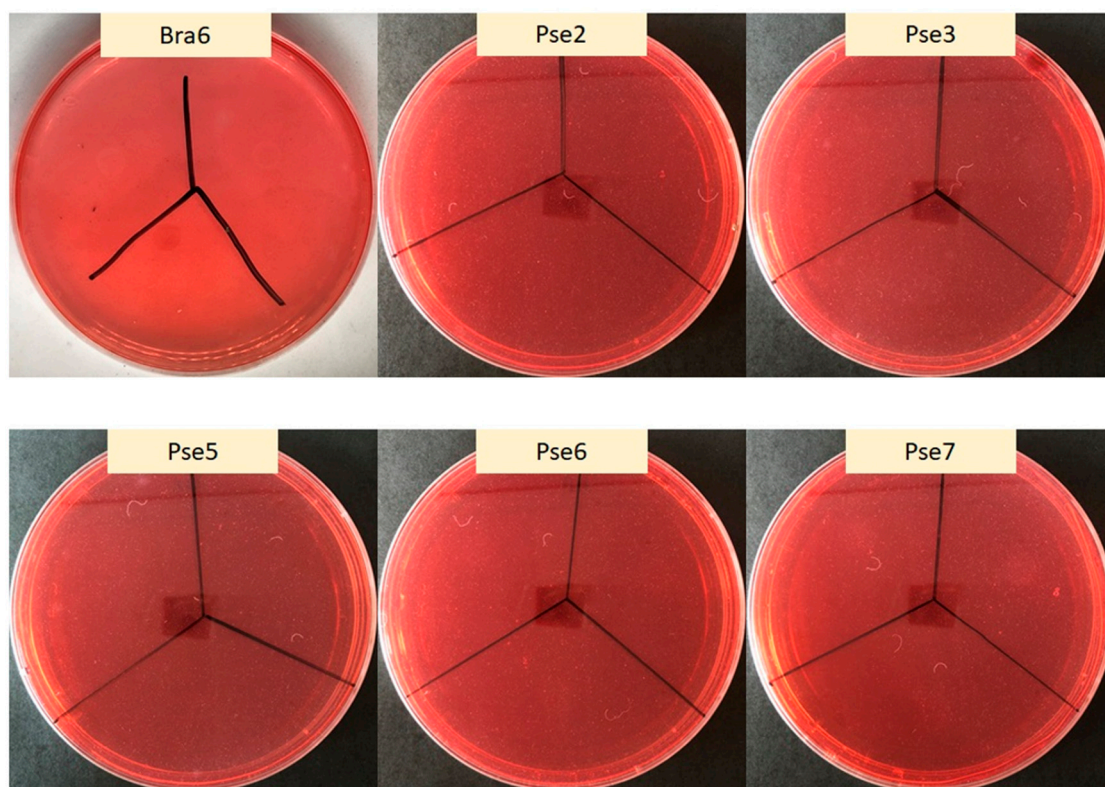


Figure S3. Colony morphology of the five-day bacterial cultures without cellulolytic capability on carboxymethylcellulose-containing medium. Three replications of each isolate were performed on the same plate.

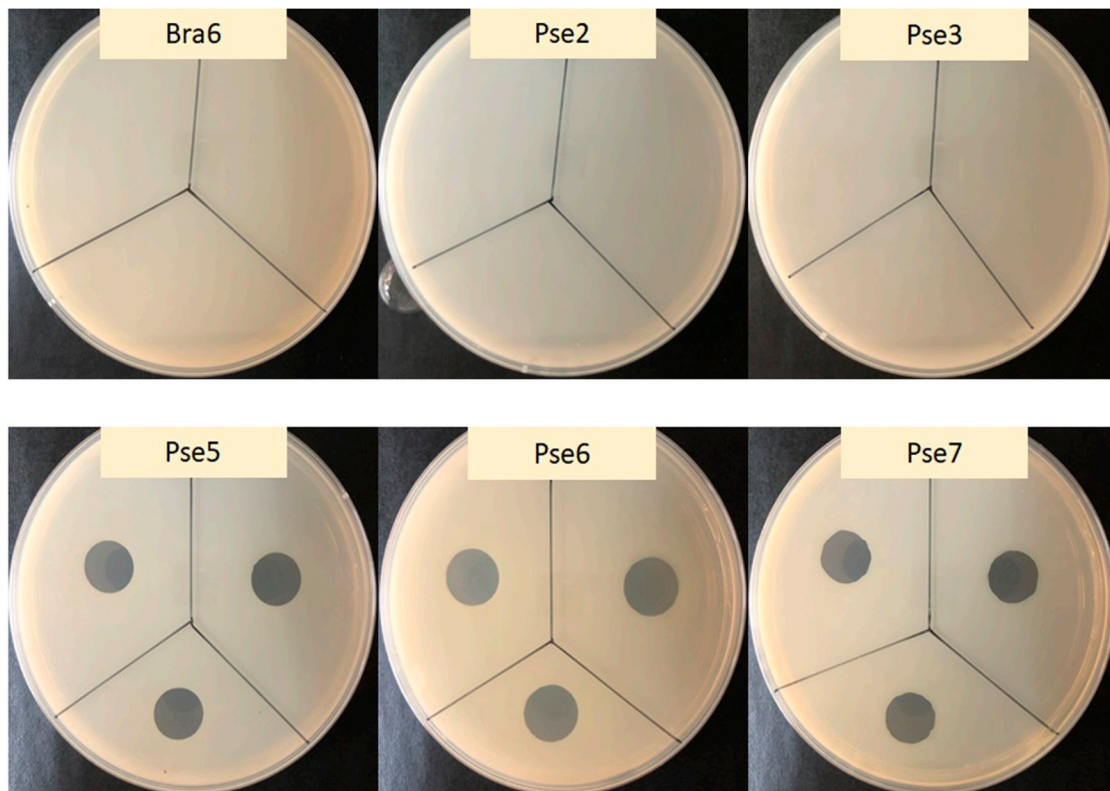


Figure S4. Colony morphology of the five-day bacterial cultures with/without pectinolytic capability on pectin-containing medium. Three replications of each isolate were performed on the same plate.

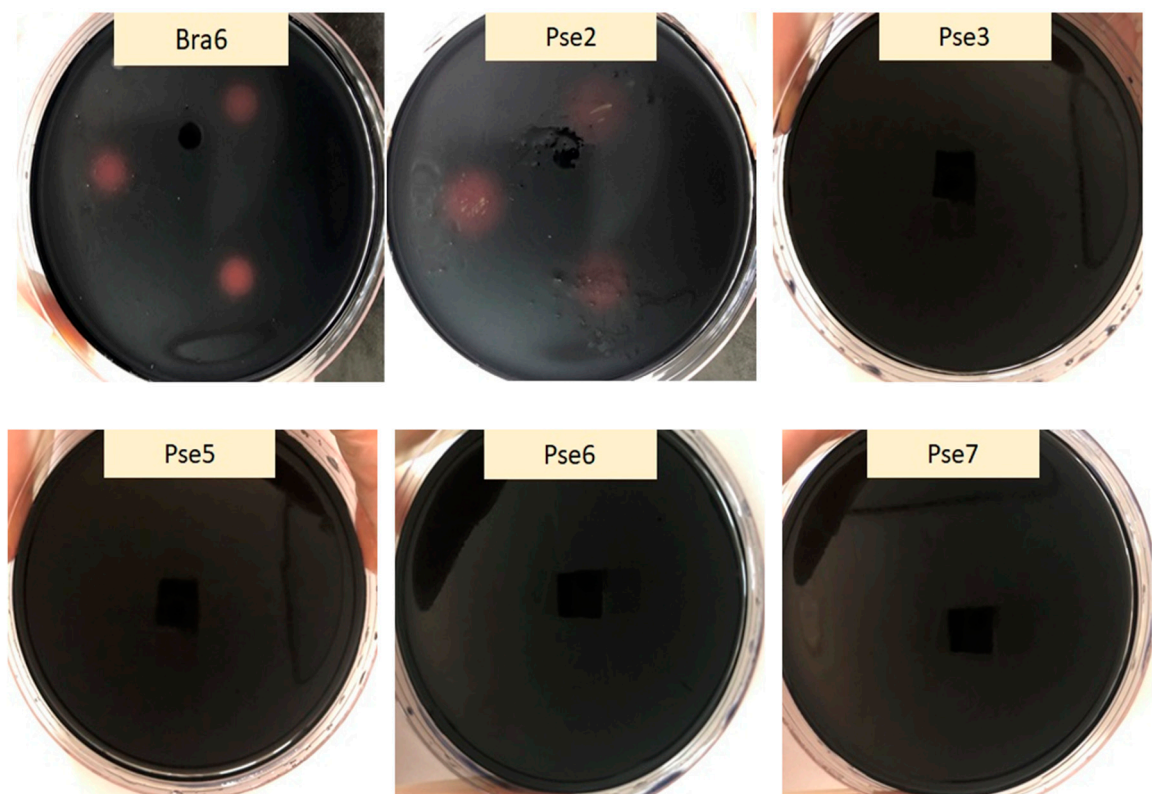


Figure S5. Colony morphology of the five-day bacterial cultures with/without amylolytic capability on soluble starch-containing medium. Three replications of each isolate were performed on the same plate.

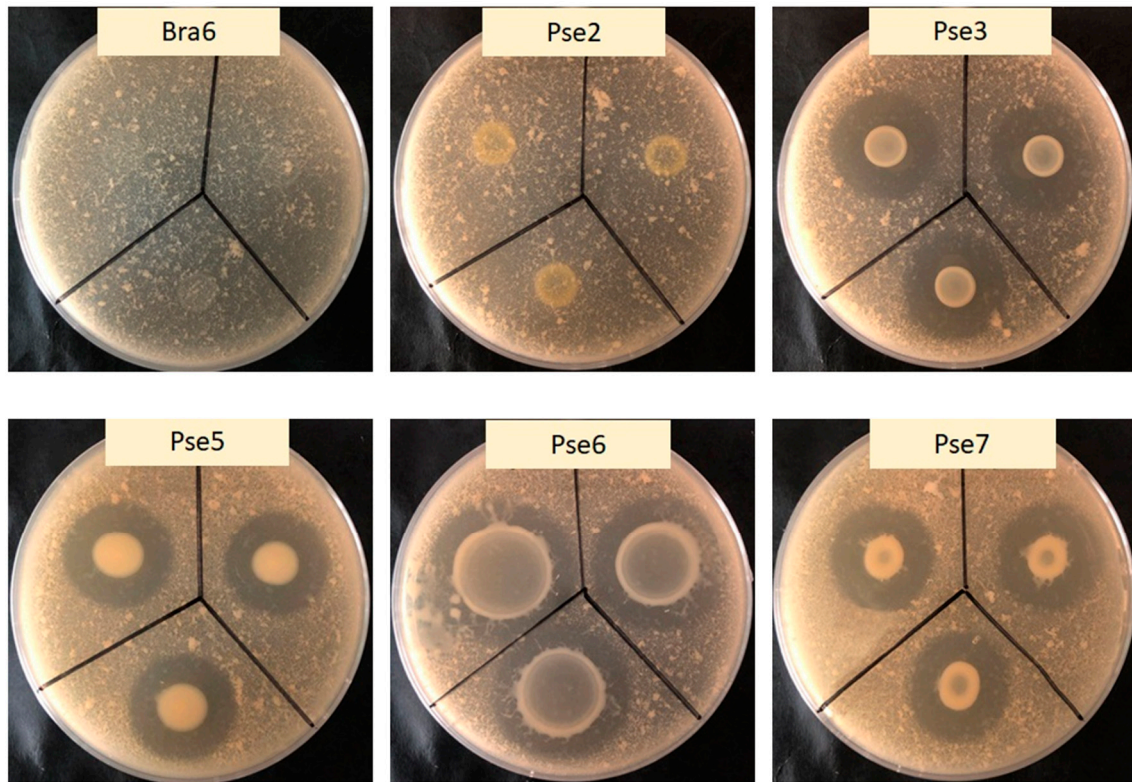


Figure S6. Colony morphology of the five-day bacterial cultures with/without proteolytic capability on skimmed milk-containing medium. Three replications of each isolate were performed on the same plate.