

## Article

# Modelling Erosion and Floods in Volcanic Environment: The Case Study of the Island of Vulcano (Aeolian Archipelago, Italy)

Rosanna Bonasia <sup>1</sup>, Agnese Turchi <sup>2</sup>, Paolo Madonia <sup>3</sup>, Alessandro Fornaciai <sup>4</sup>, Massimiliano Favalli <sup>4</sup>, Andrea Gioia <sup>5</sup> and Federico Di Traglia <sup>6,\*</sup>

<sup>1</sup> Consejo Nacional de Ciencia y Tecnología (CONACYT)-Instituto Politécnico Nacional, ESIA, UZ, Miguel Bernard, S/N, Edificio de Posgrado, Mexico City 07738, Mexico; rbonasia@conacyt.mx

<sup>2</sup> PLINIVS-LUPT Study Centre, University of Naples Federico II, Via Toledo 402, 80134 Napoli, Italy; agnese.turchi@unina.it

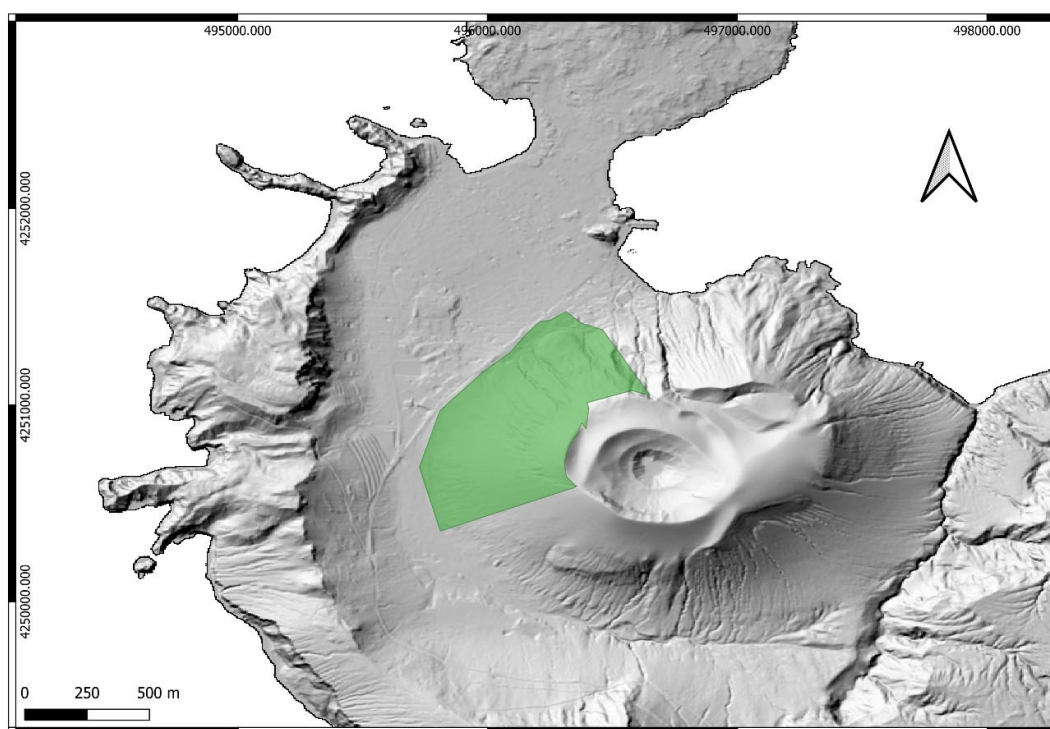
<sup>3</sup> Istituto Nazionale di Geofisica e Vulcanologia, Osservatorio Etneo—Sezione di Catania, Piazza Roma 2, 95125 Catania, Italy; paolo.madonia@ingv.it

<sup>4</sup> Istituto Nazionale di Geofisica e Vulcanologia, Sezione di Pisa, Via Cesare Battisti 53, 56125 Pisa, Italy; alessandro.fornaciai@ingv.it (A.F.); massimiliano.favalli@ingv.it (M.F.)

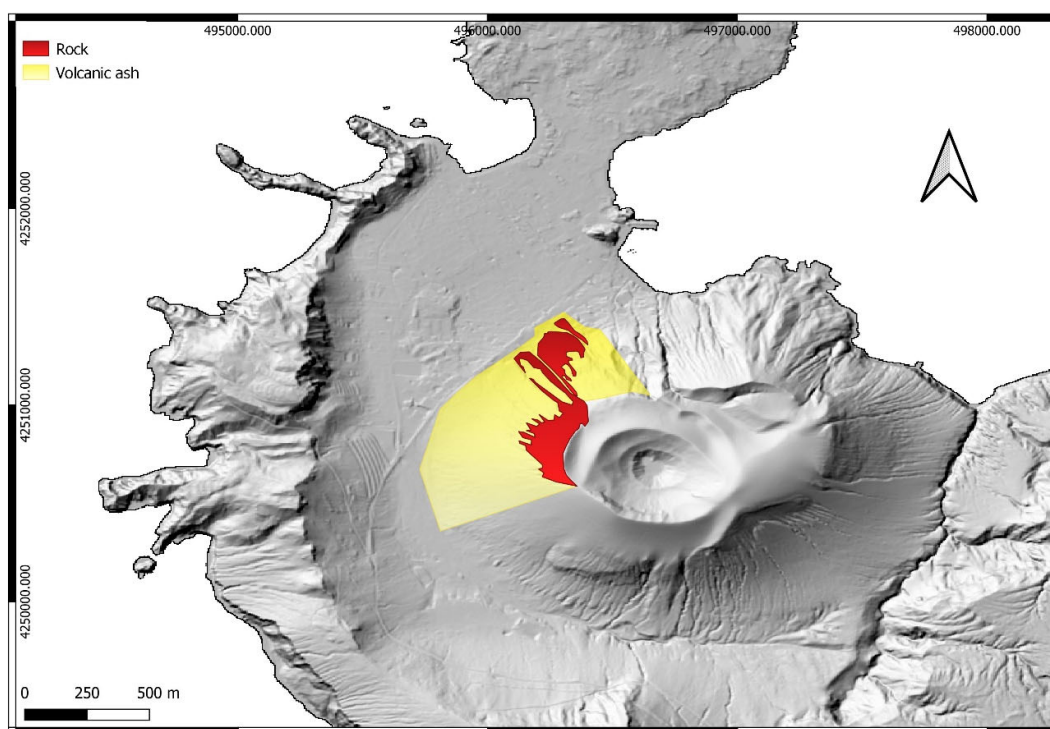
<sup>5</sup> Politecnico di Bari, Dipartimento di Ingegneria Civile, Ambientale, del Territorio, Edile e di Chimica, Via Edoardo Orabona, 4, 70125 Bari, Italy; andrea.gioia@poliba.it

<sup>6</sup> Istituto Nazionale di Geofisica e Vulcanologia, Osservatorio Vesuviano—Sezione di Napoli, Via Diocleziano 328, 80124 Napoli, Italy

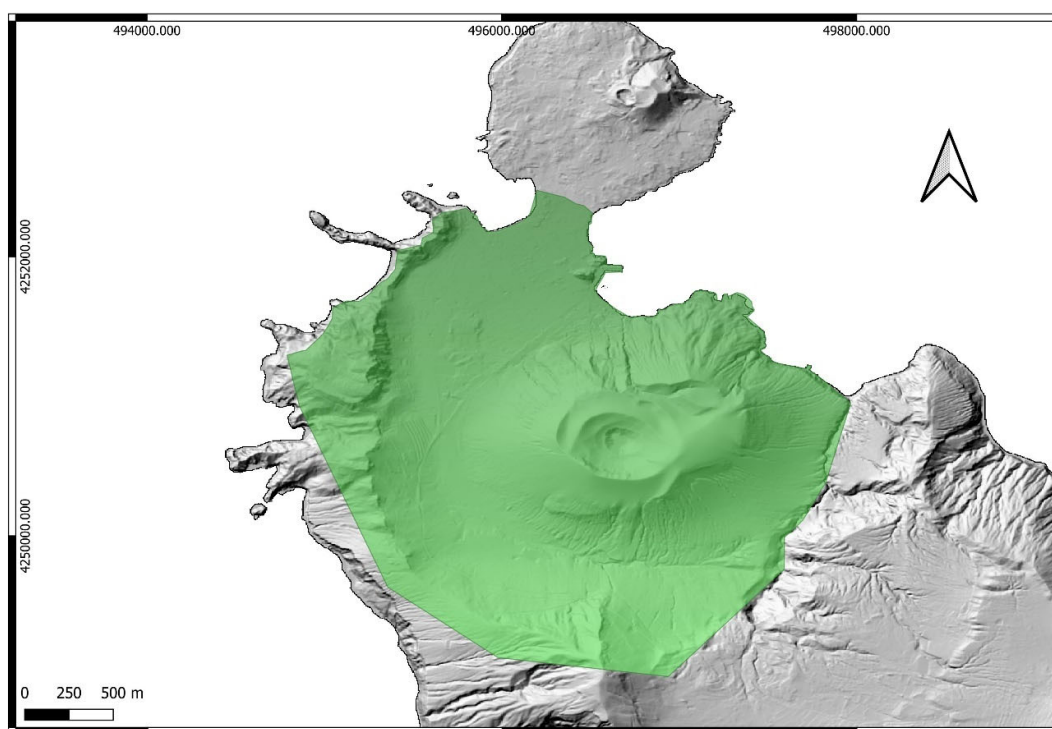
\* Correspondence: federico.ditraglia@ingv.it



**Figure S1** Computational domain for the erosion simulation on the northern flank of the volcano cone.



**Figure S2** Soil type distribution. Areas in red, marked by the label “rock”, also delimit the less erodible areas of the computing domain.



**Figure S3** Computational domain for the hydraulic simulations of floods scenarios.