

Supplementary Materials:

Table S1. The details of socio-demographic characteristics.

Demographic factors	Items	Number (%)
Age	20-29,	336 (31)
	30-39,	398 (37.5)
	40-49,	165 (15.6)
	50-59,	103 (9.7)
	Above60	58 (5.5)
Gender	male,	577 (54.4)
	female	483 (45.6)
Family size (Unit: person)	One,	81 (7.6)
	Two,	151 (14.2)
	Three,	470 (44.3)
	Four,	199 (18.8)
	More than five	159 (15.0)
Monthly wage (Unit: RMB)	≤5000,	131 (12.4)
	5000-10000,	295 (27.8)
	10000-20000,	364 (34.3)
	20000-40000,	247 (23.3)
	≥50000	23 (2.2)
Educational level	Junior high school,	49 (4.6)
	high school,	117 (11.0)
	Bachelor,	688 (64.9)
	M.Sc or Ph.D.	206 (19.4)
Marital status	Non-married,	287 (27.1)
	Married,	727 (68.6)
	Divorced	46 (4.3)
Whether have children	Have children	621 (58.6)
	No	439 (41.4)
Total: 1060 respondents.		

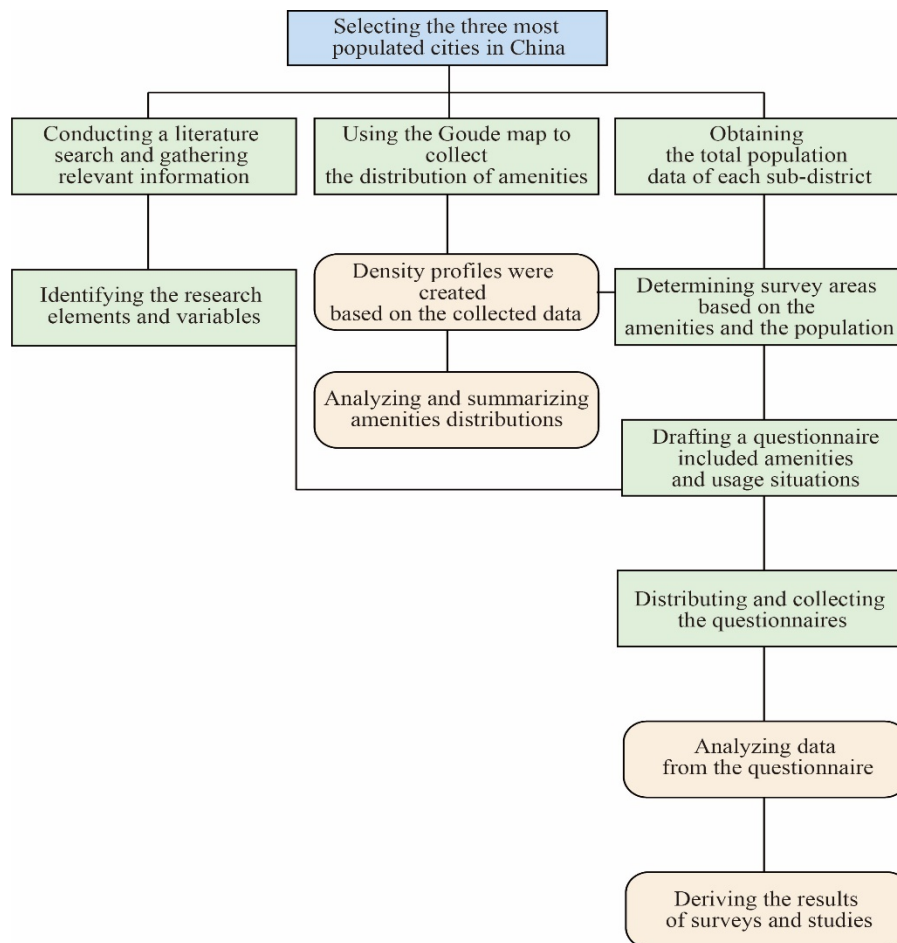


Figure S1. The research flow chart