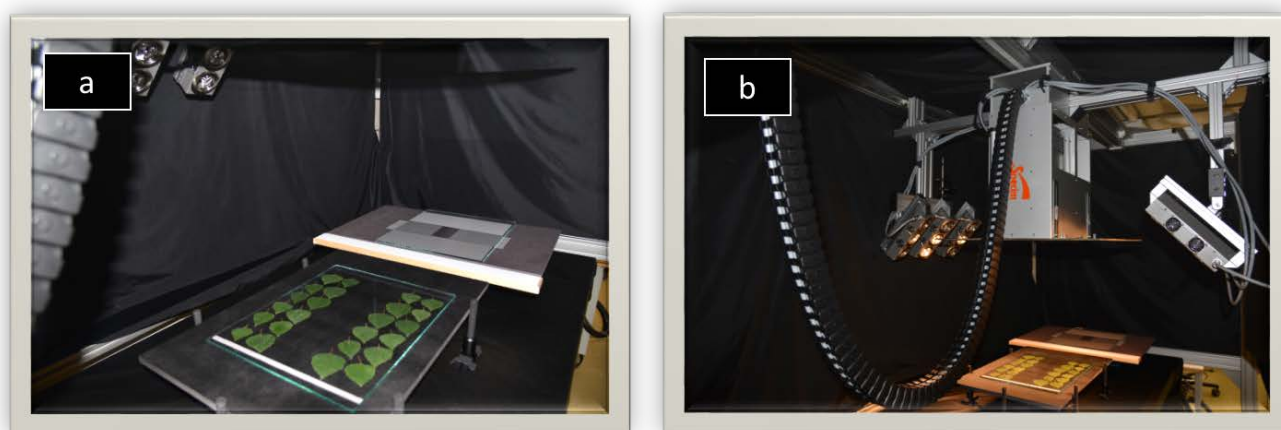
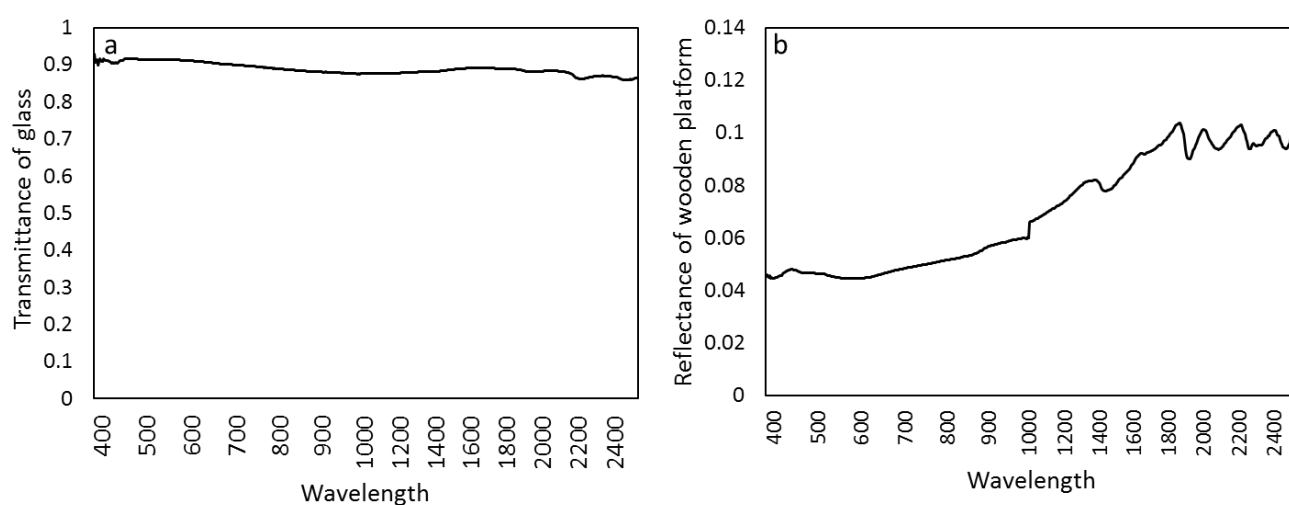


# Supplementary Materials: Leaf canopy position and cardinal direction affects spectral reflectance in silver birch

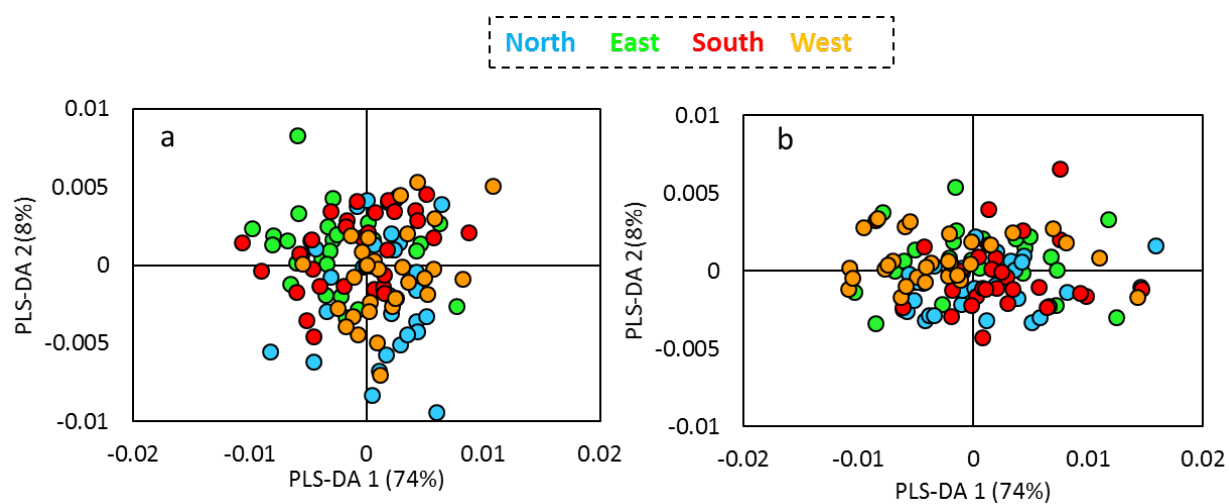
Maya Deepak\*, Sarita Keski-Saari, Laure Fauch, Lars Granlund Elina Oksanen, and Markku Keinänen



**Figure S1.** (a) Samples of silver birch leaves and (b) imaging set up.



**Figure S2.** (a) Transmittance spectra of glass used for image scanning and (b) reflectance spectra from the plywood plate painted with Maston 100 series Matt black.



**Figure S3.** PLS-DA for classification of cardinal direction (a) middle canopy and (b) lower canopy