

Figure S1. The detailed process for removing the orbital error. (a) The unwrapped interferogram. (b) The quadratic ramp estimated from the whole image by excluding the earthquake deformation region indicated by the black rectangle in (a). (e) The interferogram with the orbital error mitigated.

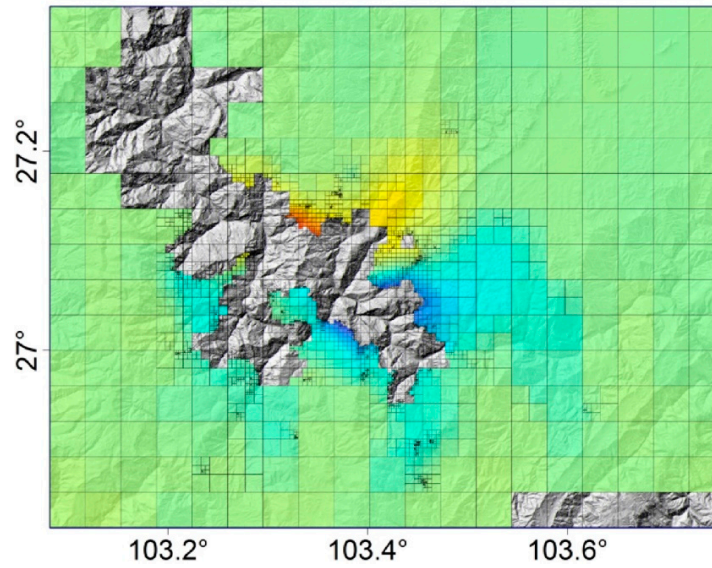


Figure S2. Quadtree decomposition image of coseismic deformation map.

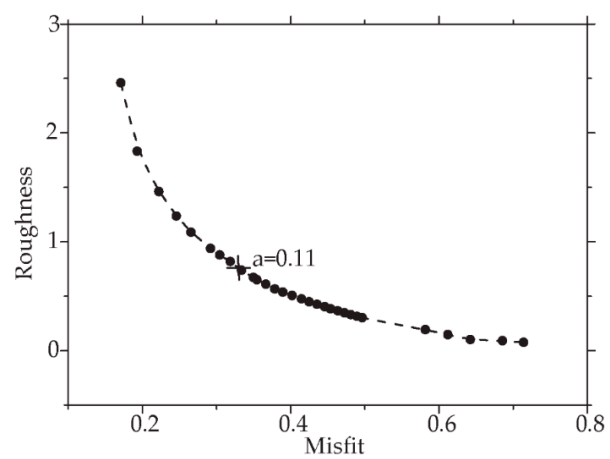


Figure S3. Trade-off curve between misfit and model roughness.