

Assessing the temporal response of Tropical Dry Forests to meteorological drought

Lidong Zou ¹, Sen Cao ^{1,2}, Anzhou Zhao ^{3,4} and Arturo Sanchez-Azofeifa ^{1,*}

¹ Department of Earth and Atmospheric Sciences, University of Alberta, Edmonton T6G 2E3, Canada;

² Key Laboratory for Geo-Environmental Monitoring of Coastal Zone of the Ministry of Natural Resources & Guangdong Key Laboratory of Urban Informatics & Shenzhen Key Laboratory of Spatial Smart Sensing and Services & Research Institute for Smart Cities, Shenzhen University, Shenzhen 518060, China;

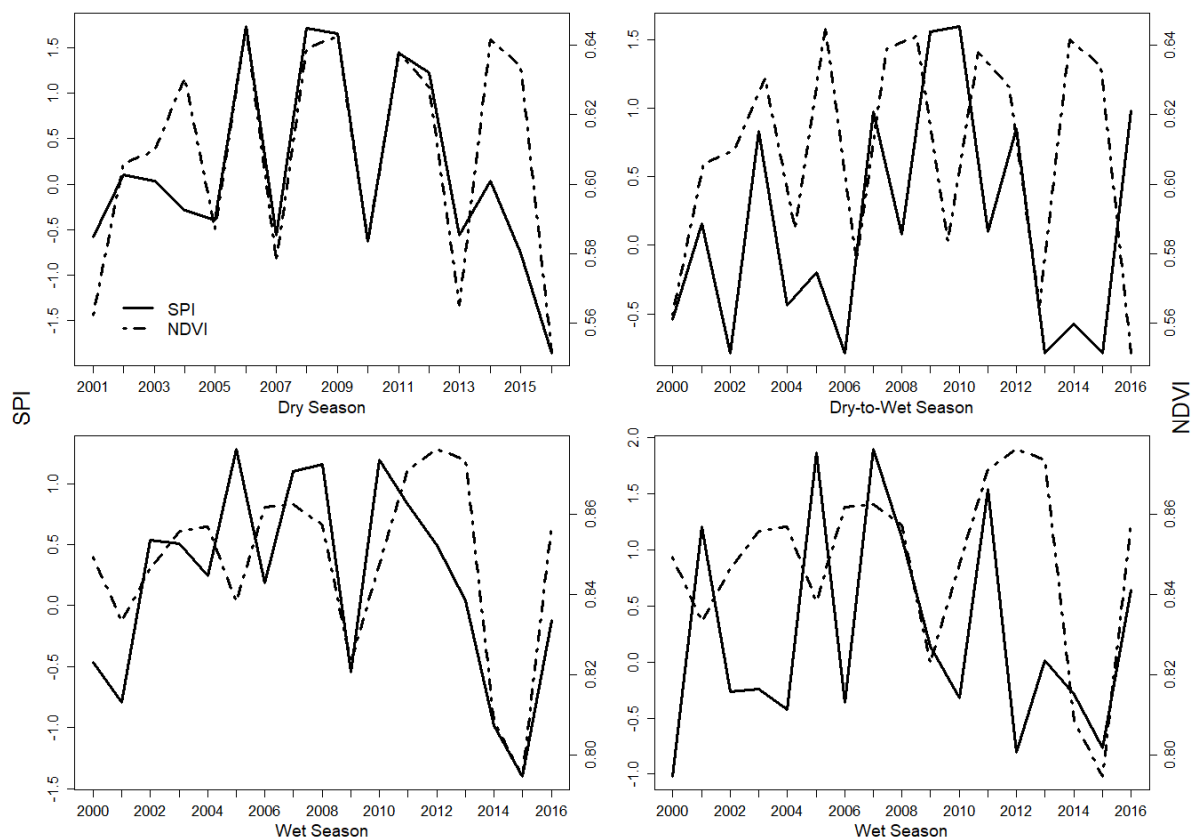
³ College of Mining and Geomatics, Hebei University of Engineering, Handan 056038, China;

⁴ State Key Laboratory of Resources and Environmental Information Systems, Institute of Geographical Sciences and Natural Resources Research, Chinese Academy of Sciences, Beijing, 100101, China.

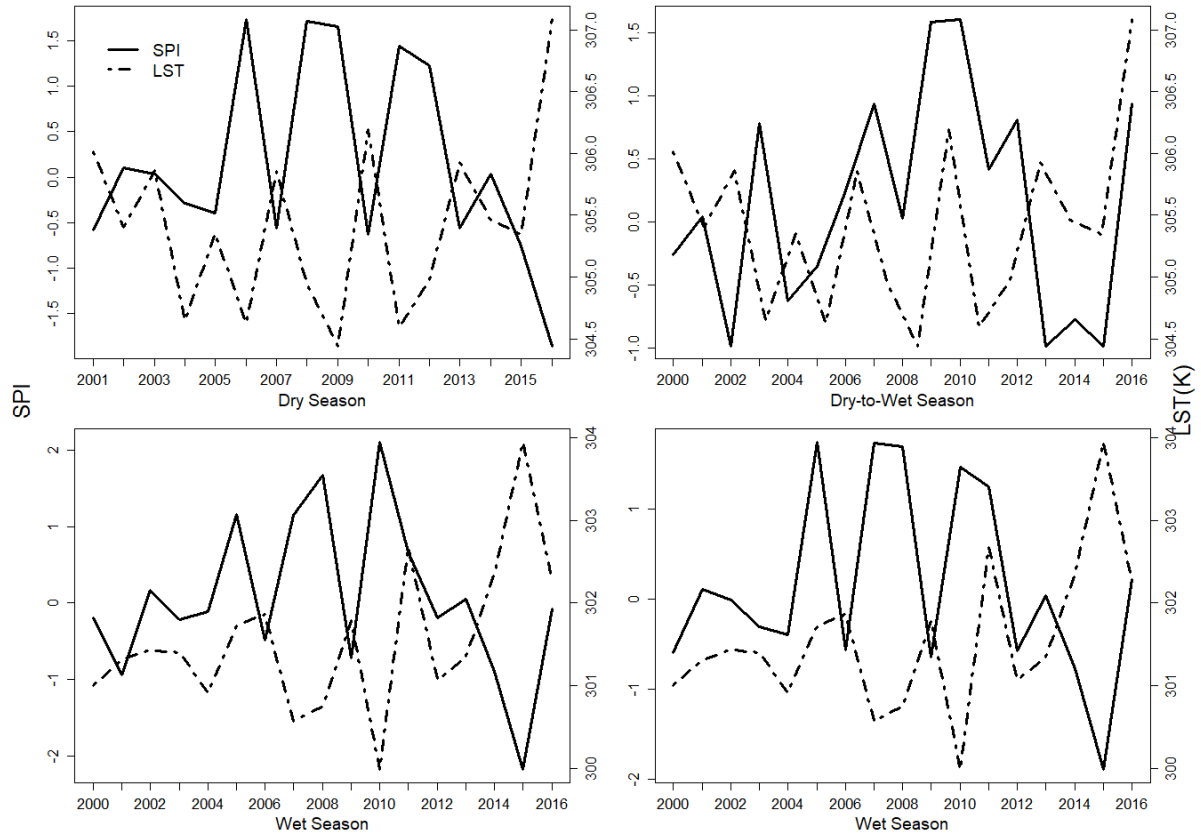
* Correspondence: gasanche@ualberta.ca;

This file includes:

Figure 1s: The seasonal average NDVIs and LSTs and the selected SPIs from 2000 to 2016



(a)



(b)

Figure 1. s. (a).The seasonal average NDVIs and the selected SPIs (Dry Season: Duration=11, Lag=0; Dry-to-Wet Season: Duration=3, Lag=1; Wet Season: Duration=6, Lag=4; Wet-to-Dry Season: Duration=3, Lag=0) from 2000 to 2016.

(b). The seasonal average LSTs and the selected SPIs (Dry Season: Duration=11, Lag=0; Dry-to-Wet Season: Duration=3, Lag=1; Wet Season: Duration=10, Lag=1; Wet-to-Dry Season: Duration=8, Lag=0) from 2000 to 2016