

Table S1: Sample ATCOR-4r (rugged terrain) settings used to process the first CASI HSI of flight line. Visibility, atmospheric profile and aerosol model were consistent for all flight lines.

Parameter	Input Value
Flight date (dd-mm-yyyy)	29-04-2013
Flight time (hh:mm:ss)	14:07:14
Flight altitude (km asl)	2.469
Average ground elevation (km)	0.047
Flight heading (degree)	122.8
Solar zenith angle (degree)	50.1
Solar azimuth angle (degree)	78.4
Visibility (km)	100
Atmospheric profile	Tropical
Aerosol model	Maritime

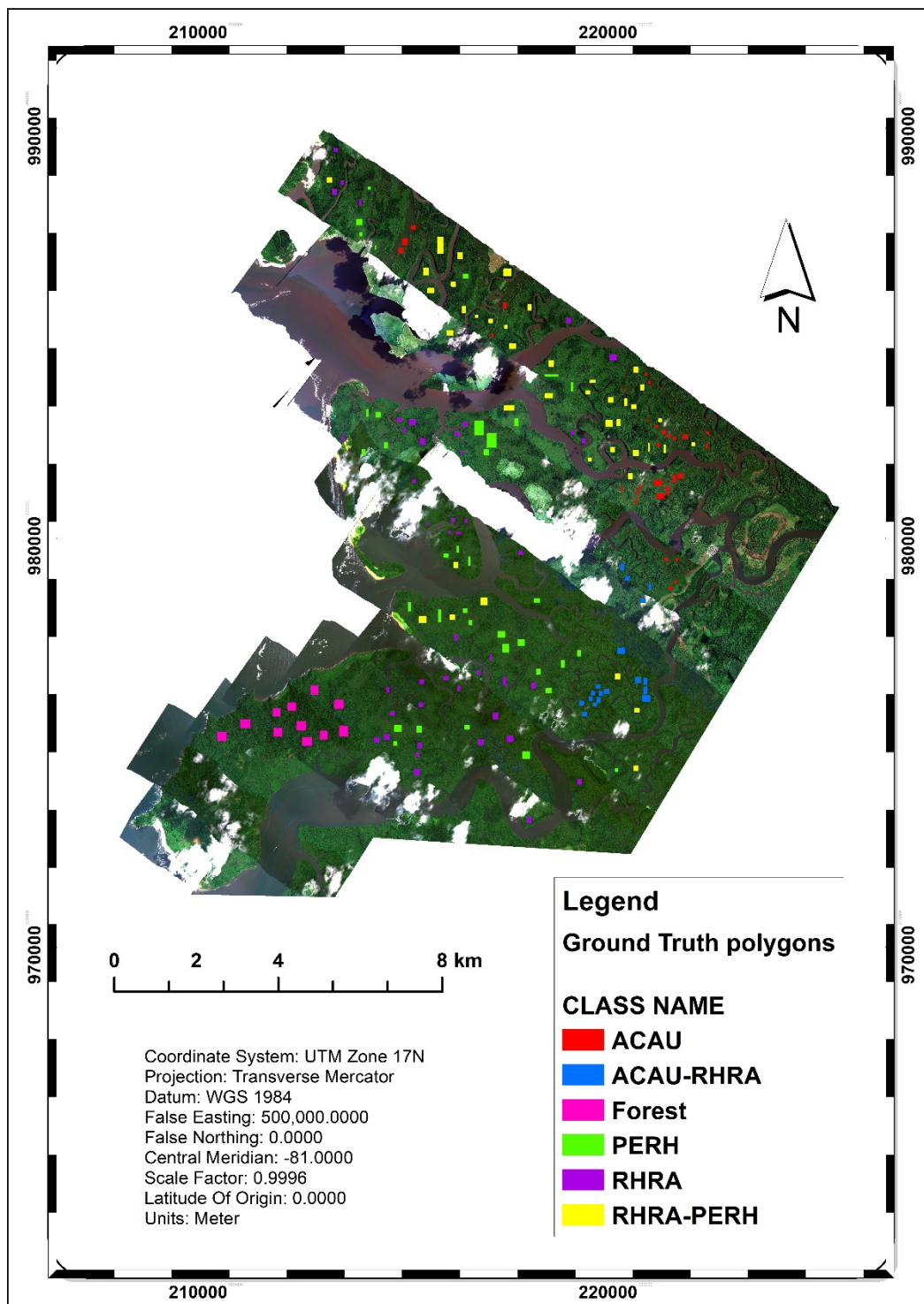
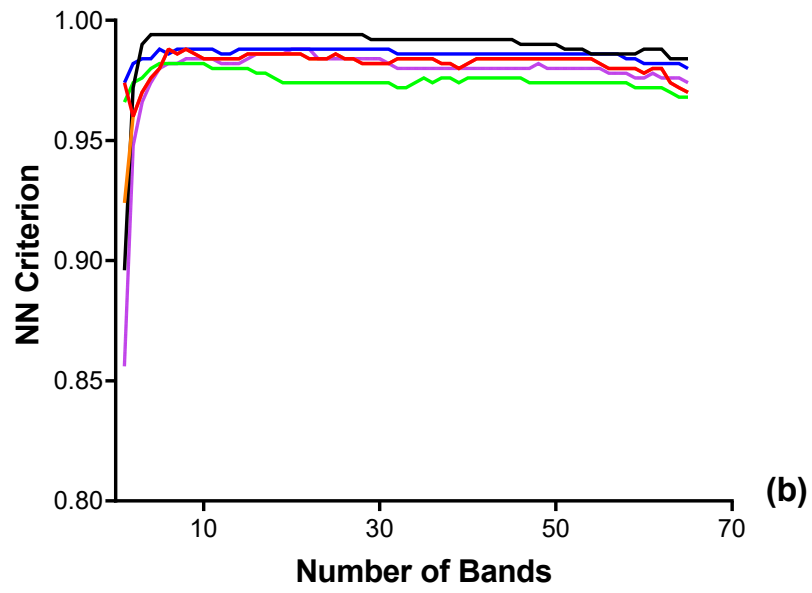
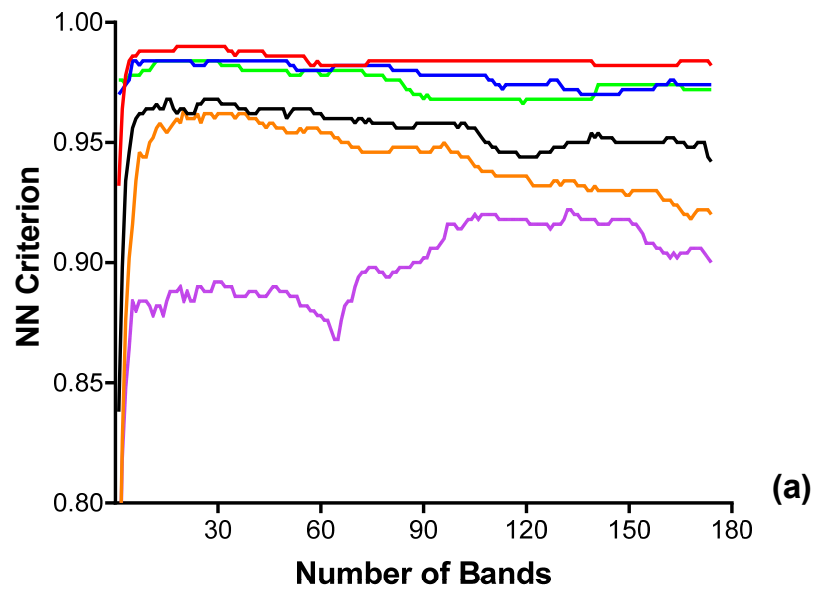


Figure S1: Spatial distribution of ground truth polygons used in this study, 181 polygons made up of ACAU (31 polygons), ACAU-RHRA (18 Polygons), Forest (11 polygons), PERH (36 polygons), RHRA (44 polygons) and RHRA-PERH (41 polygons)



— ME - SWIR (500 m) — MIG - SWIR (250 m) — MIG - SWIR (62.5 m)
— MIG - SWIR (500 m) — ME - SWIR (250) — ME - SWIR (62.5 m)

Figure S2: Forward Feature Selection implemented on different window sizes (i.e., 62.5 m, 250 m, 500 m) for mangrove extent classification.

		Predicted Class						UA (%)	Overall Accuracy (%) = 84.5
		ACAU	ACAU-RHRA	Forest	PERH	RHRA	RHRA-PERH		
True Class	ACAU	62						100.0	
	ACAU-RHRA		57	1	3		2	90.5	
	Forest		1	55		2	4	88.7	
	PERH	1			53	5	3	85.5	
	RHRA		5	1	3	37	17	58.7	
	RHRA-PERH				3	7	53	84.1	
PA (%)		98.4	90.5	96.5	85.5	72.5	67.1		

Figure S3: Confusion matrix showing the best classification performance attained for ME (SWIR) at 25 m spatial resolution using Q-SVM classifier.

		Predicted Class						UA (%)	Overall Accuracy (%) = 80.0
		ACAU	ACAU-RHRA	Forest	PERH	RHRA	RHRA-PERH		
True Class	ACAU	56	1	1	3		1	90.3	
	ACAU-RHRA	1	54	7		1		85.7	
	Forest	2	4	49		5	3	77.8	
	PERH				61		1	98.4	
	RHRA		2	2	2	34	22	54.8	
	RHRA-PERH	1		1	3	12	46	73.0	
PA (%)		93.3	88.5	81.7	88.4	65.4	63.0		

Figure S4: Confusion matrix showing the best classification performance attained for spatially resampled VNIR reflectance (25 m) using Q-SVM classifier.

		Predicted Class						Overall Accuracy (%) = 86.0	
True Class		ACAU	ACAU-RHRA	Forest	PERH	RHRA	RHRA-PERH		UA (%)
	ACAU	125							100.0
	ACAU-RHRA		119	6					95.2
	Forest		2	114		5	4		91.2
	PERH				110	3	12		88.0
	RHRA	1		1	3	79	41		63.2
RHRA-PERH	1	2		7	17	98	78.4		
PA (%)		98.4	96.7	94.2	91.7	76.0	63.2		

Figure S5: Confusion matrix showing the best classification performance attained for spatially resampled VNIR reflectance (12.5 m) using Q-SVM classifier.

		Predicted Class							
		ACAU	ACAU-RHRA	Forest	PERH	RHRA	RHRA-PERH	UA (%)	
True Class	ACAU	21	1		1			91.3	Overall Accuracy (%) = 67.1
	ACAU-RHRA		4		4	11	5	16.7	
	Forest		2	24	1		1	85.7	
	PERH				29	2		93.5	
	RHRA		2		4	10	13	34.5	
	RHRA-PERH	1	2		6	2	30	73.2	
PA (%)		95.5	36.4	100.0	64.4	40.0	61.2		(a)

		Predicted Class							
		ACAU	ACAU-RHRA	Forest	PERH	RHRA	RHRA-PERH	UA (%)	
True Class	ACAU	14		4	3		2	60.9	Overall Accuracy (%) = 57.1
	ACAU-RHRA		6	1	3	9	5	25.0	
	Forest	1	2	21	1		3	75.0	
	PERH				26	4	1	83.9	
	RHRA		3	1	1	11	13	37.9	
	RHRA-PERH	1	2	4	6	5	22	55.0	
PA (%)		87.5	46.2	67.7	65.0	37.9	47.8		(b)

		Predicted Class							
		ACAU	ACAU-RHRA	Forest	PERH	RHRA	RHRA-PERH	UA (%)	
True Class	ACAU	18		4			1	78.3	Overall Accuracy (%) = 63.6
	ACAU-RHRA	1	7	1	1	9	6	28.0	
	Forest	1		24		2	1	85.7	
	PERH				27	2	2	87.1	
	RHRA		2		3	13	11	44.8	
	RHRA-PERH	1	2		6	8	23	57.5	
PA (%)		85.7	63.6	82.8	73.0	38.2	52.3		(c)

Figure S6: Confusion matrix showing the classification performance of three classifiers at 62.5 m spatial resolution (a) LDA, (b) k-NN, and (c) Q-SVM trained with spatially resampled reflectance data (VNIR).

		Predicted Class						Overall Accuracy (%) = 54.7
		ACAU	ACAU-RHRA	Forest	PERH	RHRA	RHRA-PERH	
True Class	ACAU	4	3	8	6	2		17.4
	ACAU-RHRA	3	10	4	1	2	2	45.5
	Forest	1		28				96.6
	PERH	1			20	1	3	80.0
	RHRA		3		9	3	10	12.0
	RHRA-PERH		4	2	2	5	22	62.9
PA (%)		44.4	50.0	66.7	52.6	23.1	59.5	

(a)

		Predicted Class						Overall Accuracy (%) = 49.1
		ACAU	ACAU-RHRA	Forest	PERH	RHRA	RHRA-PERH	
True Class	ACAU	7	3	7	4	2		30.4
	ACAU-RHRA	3	4	2	4	5	4	18.2
	Forest	1	2	24	1		1	82.8
	PERH	1		1	15	7	1	60.0
	RHRA		2	3	3	10	7	40.0
	RHRA-PERH	1	1	1	6	8	18	51.4
PA (%)		53.8	33.3	63.2	45.5	31.3	58.1	

(b)

		Predicted Class						Overall Accuracy (%) = 53.5
		ACAU	ACAU-RHRA	Forest	PERH	RHRA	RHRA-PERH	
True Class	ACAU	11	1	6	4	1		47.8
	ACAU-RHRA	4	7	1	2	2	6	31.8
	Forest	1	2	24	1		1	82.8
	PERH	1		1	17	5	1	68.0
	RHRA		2	3	5	8	7	32.0
	RHRA-PERH	1	2		6	8	18	51.4
PA (%)		61.1	50.0	68.6	48.6	33.3	54.5	

(c)

Figure S7: Confusion matrix showing the classification performance of three classifiers at 62.5 m spatial resolution (a) LDA, (b) k-NN, and (c) Q-SVM trained with spatially resampled reflectance data (SWIR).

		Predicted Class						UA (%)	
		ACAU	ACAU-RHRA	Forest	PERH	RHRA	RHRA-PERH		
True Class	ACAU	17			6			73.9	Overall Accuracy (%) = 75.6
	ACAU-RHRA		15		1	6	3	60.0	
	Forest			27		1		96.4	
	PERH	1	1		27		2	87.1	
	RHRA		2	2		23	2	79.3	
	RHRA-PERH		2		4	10	24	60.0	
PA (%)		94.4	75.0	93.1	71.1	57.5	77.4		(a)

		Predicted Class						UA (%)	
		ACAU	ACAU-RHRA	Forest	PERH	RHRA	RHRA-PERH		
True Class	ACAU	20			2		1	87.0	Overall Accuracy (%) = 81.3
	ACAU-RHRA		17		1	2	5	68.0	
	Forest			28				100.0	
	PERH		2		27		2	87.1	
	RHRA		3			21	5	72.4	
	RHRA-PERH		2		1	7	30	75.0	
PA (%)		100.0	70.8	100.0	87.1	70.0	69.8		(b)

		Predicted Class						UA (%)	
		ACAU	ACAU-RHRA	Forest	PERH	RHRA	RHRA-PERH		
True Class	ACAU	20			2		1	87.0	Overall Accuracy (%) = 79.0
	ACAU-RHRA		15		3	1	6	60.0	
	Forest			28				100.0	
	PERH	1	1		25		4	80.6	
	RHRA		3			21	5	72.4	
	RHRA-PERH		4		1	5	30	75.0	
PA (%)		95.2	65.2	100.0	80.6	77.8	65.2		(c)

Figure S8: Confusion matrix showing the classification performance of three classifiers at 62.5 m spatial resolution (a) LDA, (b) k-NN, and (c) Q-SVM trained with ME transformed reflectance (VNIR).

		Predicted Class						Overall Accuracy (%) = 71.6
True Class		ACAU	ACAU-RHRA	Forest	PERH	RHRA	RHRA-PERH	
	ACAU	14		1	4	3		63.6
	ACAU-RHRA	2	12	3			5	54.5
	Forest			22			7	75.9
	PERH				23	3		88.5
	RHRA	1		3	3	12	6	48.0
	RHRA-PERH		2	1		2	33	86.8
PA (%)		82.4	85.7	73.3	76.7	60.0	64.7	

(a)

		Predicted Class						Overall Accuracy (%) = 77.8
True Class		ACAU	ACAU-RHRA	Forest	PERH	RHRA	RHRA-PERH	
	ACAU	16		1	4	1		72.7
	ACAU-RHRA		15	3	2		2	68.2
	Forest			25			4	86.2
	PERH				25	1		96.2
	RHRA			3	3	11	8	44.0
	RHRA-PERH			3		1	34	89.5
PA (%)		100.0	100.0	71.4	73.5	78.6	70.8	

(b)

		Predicted Class						Overall Accuracy (%) = 75.3
True Class		ACAU	ACAU-RHRA	Forest	PERH	RHRA	RHRA-PERH	
	ACAU	14	1	1	5	1		63.6
	ACAU-RHRA		10	3	3	1	5	45.5
	Forest			27			2	93.1
	PERH				23	1	2	88.5
	RHRA			1	4	12	8	48.0
	RHRA-PERH			1	1		36	94.7
PA (%)		100.0	90.9	81.8	63.9	80.0	67.9	

(c)

Figure S9: Confusion matrix showing the classification performance of three classifiers at 62.5 m spatial resolution (a) LDA, (b) k-NN, and (c) Q-SVM trained with ME transformed reflectance (SWIR).

True Class	Predicted Class						UA (%)	
	ACAU	ACAU-RHRA	Forest	PERH	RHRA	RHRA-PERH		
ACAU	18	1			1	4	75.0	Overall Accuracy (%) = 76.7
ACAU-RHRA	3	14		1	7		56.0	
Forest			27		1		96.4	
PERH	1			25	2	3	80.6	
RHRA		2			25	1	89.3	
RHRA-PERH		3	3	2	6	26	65.0	
PA (%)	81.8	70.0	90.0	89.3	59.5	76.5		

(a)

True Class	Predicted Class						UA (%)	
	ACAU	ACAU-RHRA	Forest	PERH	RHRA	RHRA-PERH		
ACAU	22	1			1		91.7	Overall Accuracy (%) = 85.8
ACAU-RHRA		17			4	4	72.7	
Forest			28				100.0	
PERH				30		1	96.2	
RHRA		3			23	2	91.3	
RHRA-PERH		3			6	31	77.1	
PA (%)	100.0	70.8	100.0	100.0	67.6	81.6		

(b)

True Class	Predicted Class						UA (%)	
	ACAU	ACAU-RHRA	Forest	PERH	RHRA	RHRA-PERH		
ACAU	21	2		1			87.5	Overall Accuracy (%) = 87.5
ACAU-RHRA		18		1	5	1	72.0	
Forest			27			1	96.4	
PERH				28	2	1	90.3	
RHRA		2			25	1	89.3	
RHRA-PERH		2			3	35	87.5	
PA (%)	100.0	75.0	100.0	93.3	71.4	89.7		

(c)

Figure S10: Confusion matrix showing the classification performance of SCM at 62.5 m spatial resolution (a) LDA (b) k-NN and (c) Q-SVM trained with MIG transformed reflectance (VNIR).

	Predicted Class						UA (%)	
	ACAU	ACAU-RHRA	Forest	PERH	RHRA	RHRA-PERH		
True Class	ACAU	12	1	4	5		54.5	Overall Accuracy (%) = 64.2
	ACAU-RHRA	1	11	6	1	2	52.4	
	Forest			25		4	86.2	
	PERH	3	3		19	1	70.4	
	RHRA			3	4	13	50.0	
	RHRA-PERH	1	4	4	1	3	24	
PA (%)		70.6	61.1	64.1	65.5	59.1	64.9	(a)

	Predicted Class						UA (%)	
	ACAU	ACAU-RHRA	Forest	PERH	RHRA	RHRA-PERH		
True Class	ACAU	18	1		3		81.8	Overall Accuracy (%) = 80.2
	ACAU-RHRA		11	3	3	4	52.4	
	Forest			27	1	1	93.1	
	PERH				27		100.0	
	RHRA			1	17	8	65.4	
	RHRA-PERH		2		5	30	81.1	
PA (%)		100.0	84.6	87.1	87.1	65.4	69.8	(b)

	Predicted Class						UA (%)	
	ACAU	ACAU-RHRA	Forest	PERH	RHRA	RHRA-PERH		
True Class	ACAU	18	1		2	1	81.8	Overall Accuracy (%) = 72.2
	ACAU-RHRA	2	9	1		9	42.9	
	Forest			28		1	96.6	
	PERH	1			22	2	81.5	
	RHRA			3	15	8	57.7	
	RHRA-PERH		4	1	1	6	25	
PA (%)		85.7	69.2	90.3	84.6	60.0	54.3	(c)

Figure S11: Confusion matrix showing the classification performance of three classifiers of SCM at 62.5 m spatial resolution (a) LDA, (b) KNN and (c) Q-SVM trained with MIG transformed reflectance (SWIR).