

Supplemental Material

Extracted features

Superpixel width (Sw): A measure related to the length and thinness of the object. In particular, the ratio between the area and the width of the branches of the skeleton of the object.

var_area_superpixel (Vas): The ratio between standard deviation backscatter value of the object (σ_2) and its area.

The remaining features are described in detail in the paper by Mera et al. (2017) .

The successfully segmented lookalikes

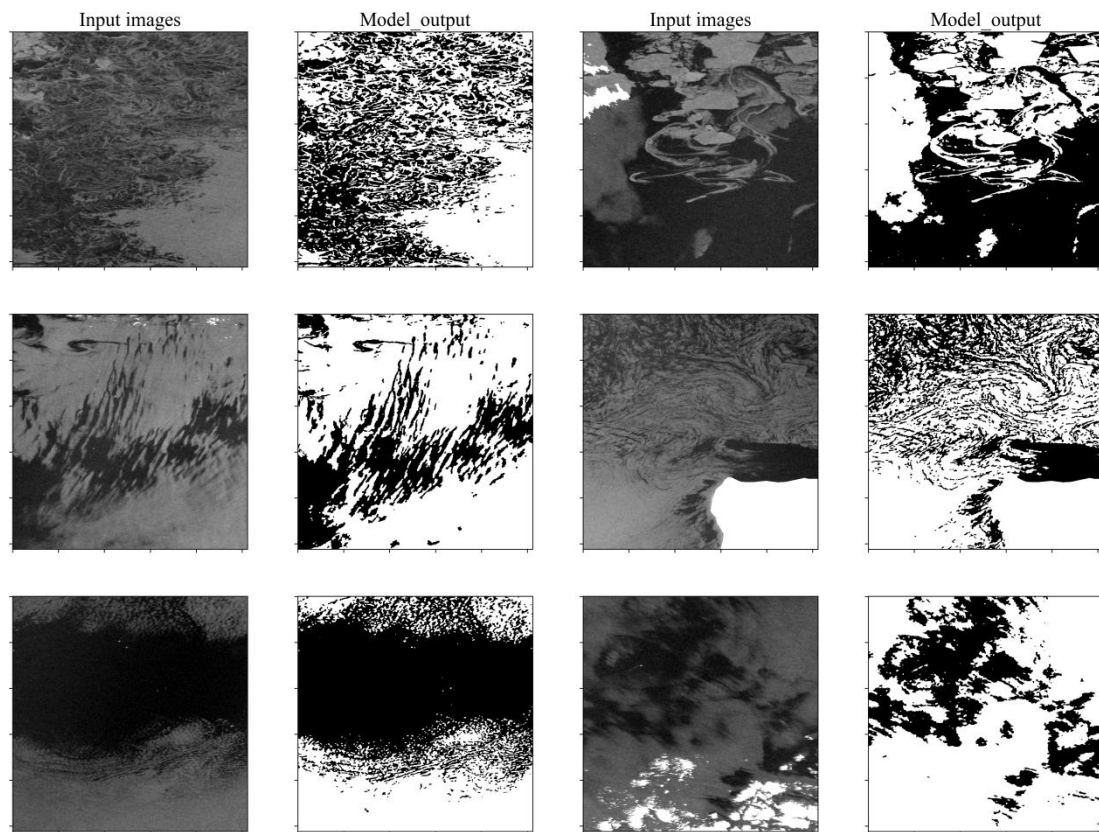


Figure S1. The successfully segmented look-alikes.

The successfully segmented oil patches

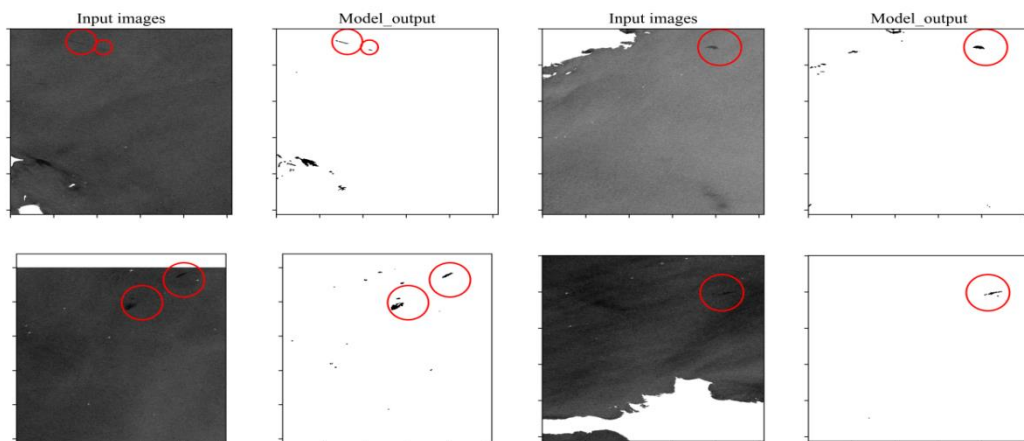


Figure S2. The successfully segmented oil patches. Dark spots in the red area are oil patches.

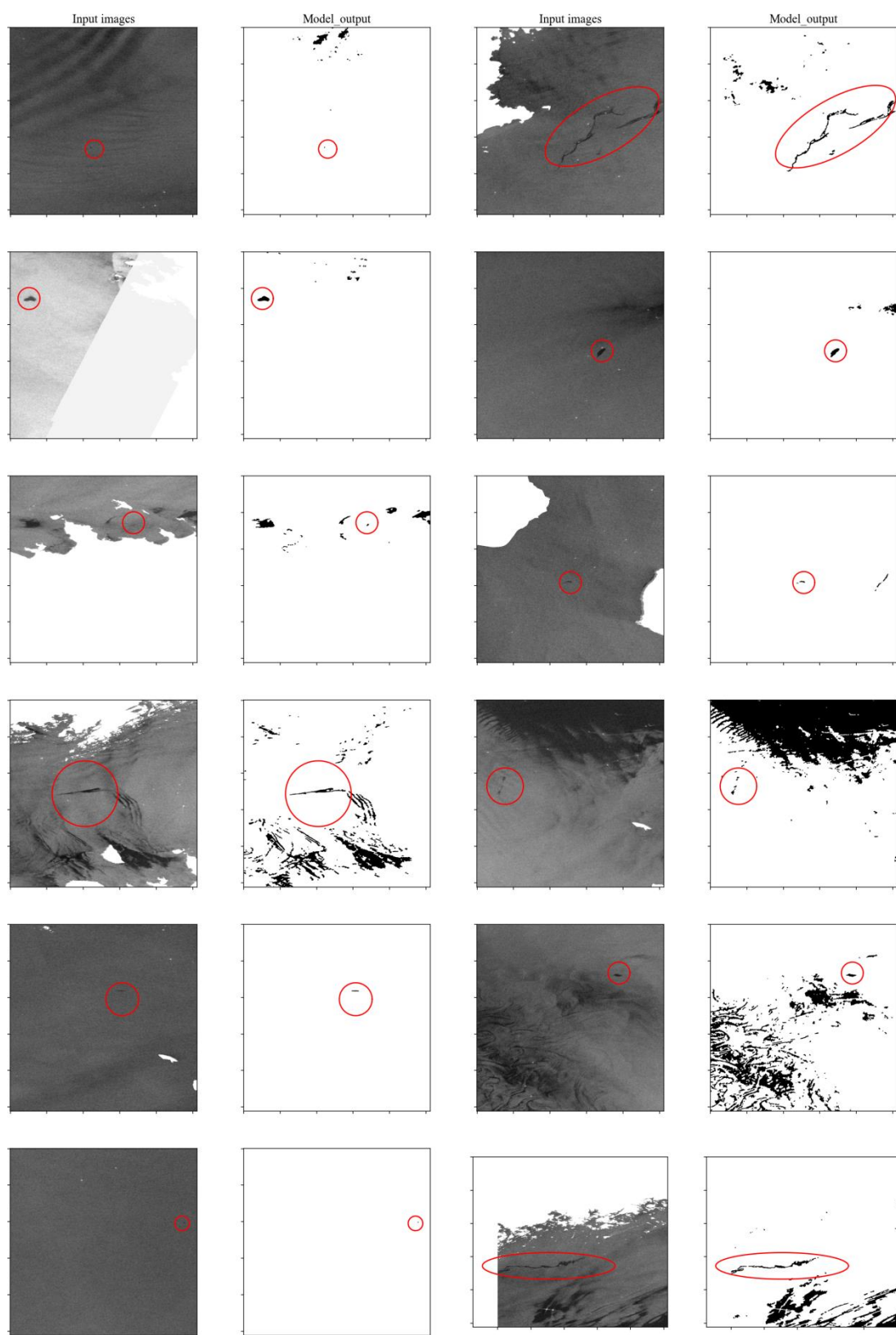


Figure S3. The successfully segmented oil patches. Dark spots in the red area are oil patches.

References

Mera, D., Bolon-Canedo, V., Cotos, J.M., & Alonso-Betanzos, A. (2017). On the use of feature selection to improve the detection of sea oil spills in SAR images. *Computers & Geosciences*, 100, 166-178