

Supplementary Materials: Evaluation of MODIS LAI/FPAR Product Collection 6. Part 1: Consistency and Improvements

Kai Yan Taejin Park, Guangjian Yan, Chi Chen, Bin Yang, Zhao Liu, Ramakrishna R. Nemani, Yuri Knyazikhin and Ranga B. Myneni

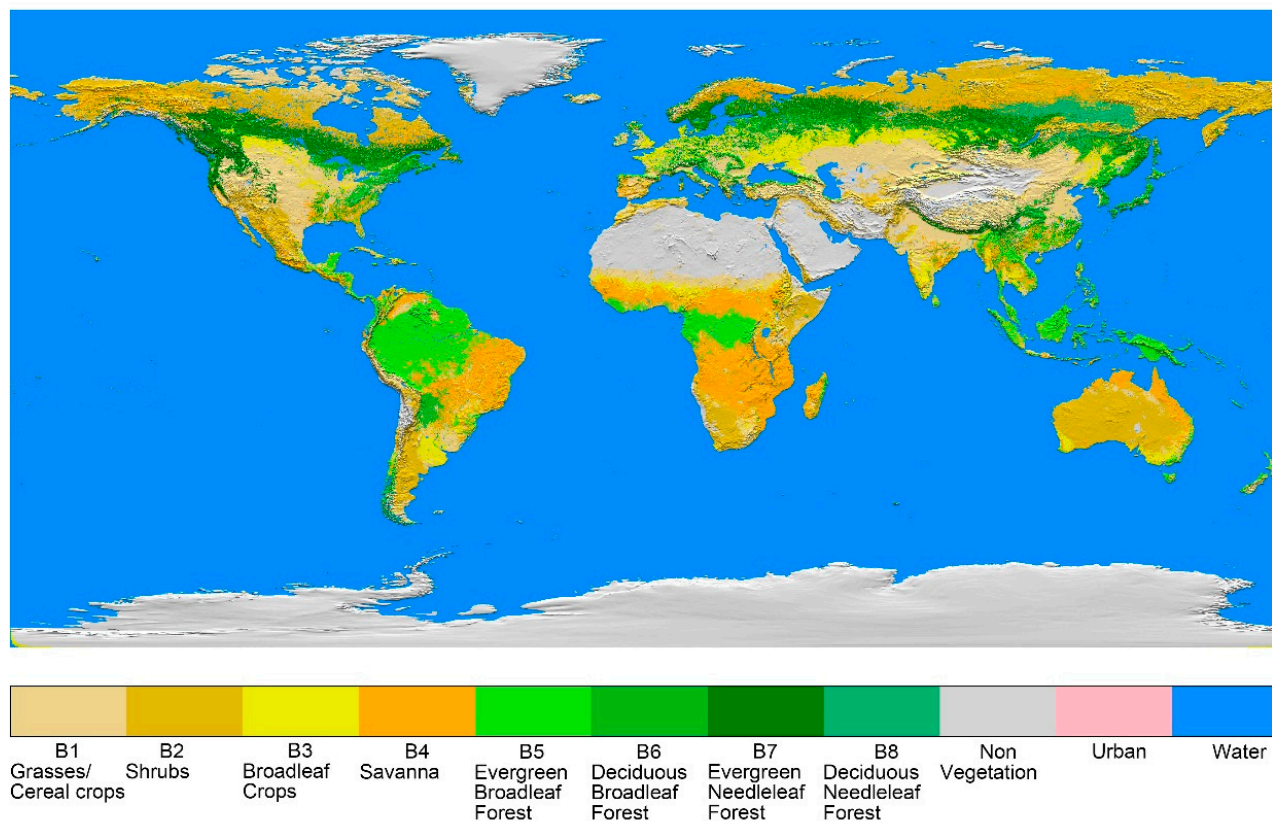


Figure S1. Three-year global 500 m 8-biome map used for MODIS LAI/FPAR C6 products during the period from 2001 to 2003.

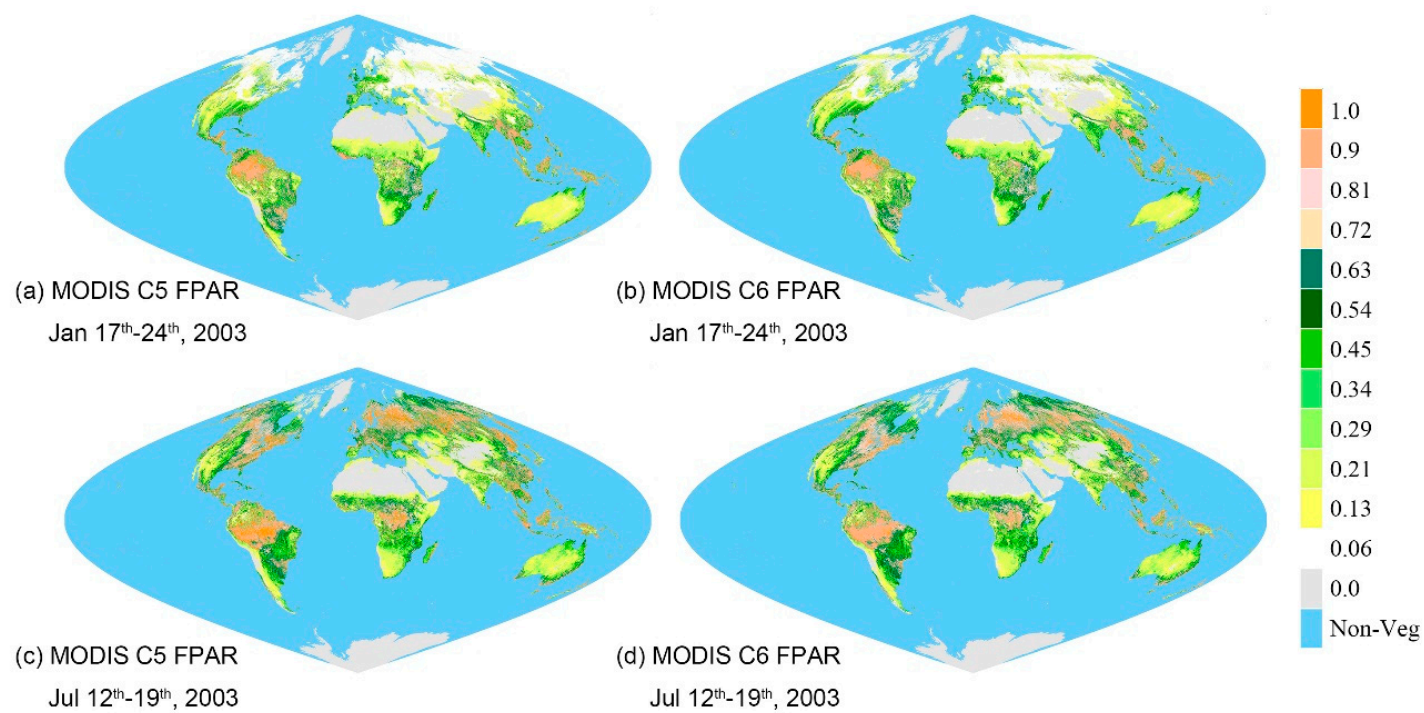


Figure S2. Color-coded maps of MODIS C5 and C6 FPAR for January (17th-24th January) and July (12th-19th July) of 2003. Area-equal sinusoidal projection is used here.

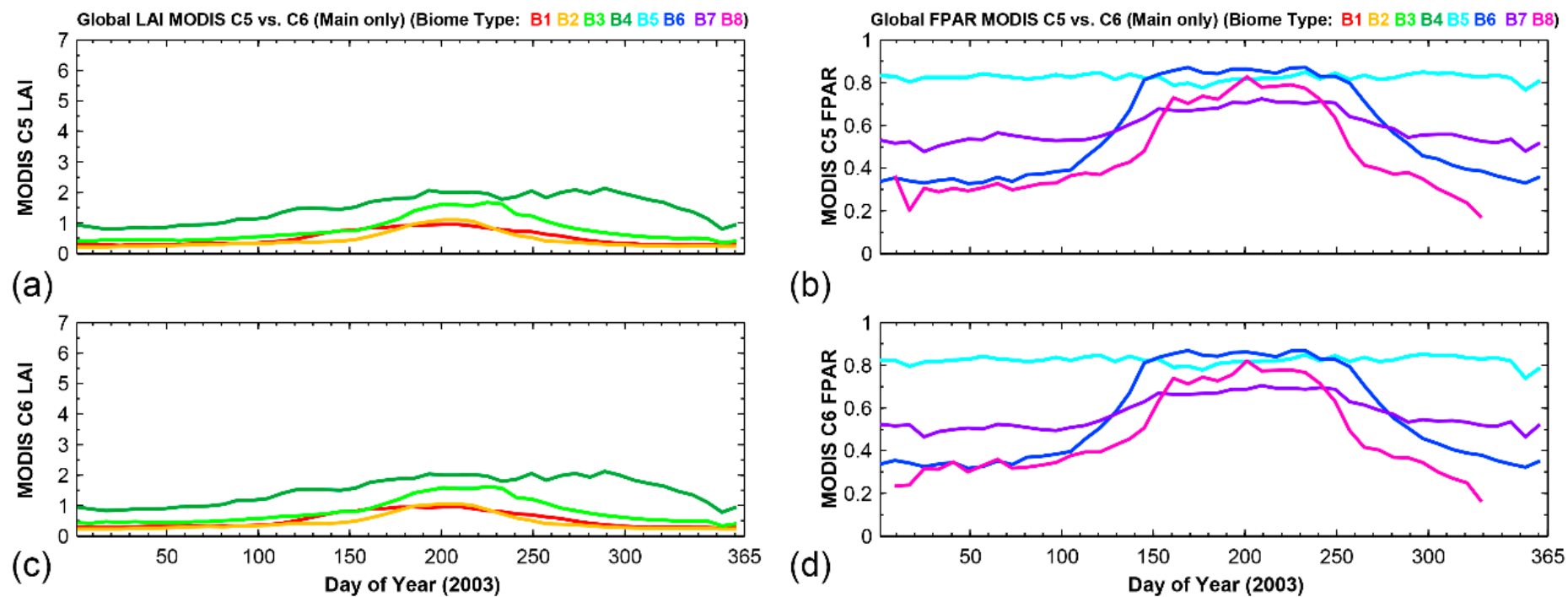


Figure S3. Seasonal variations of globally averaged MODIS LAI and FPAR from C5 and C6 in 2003

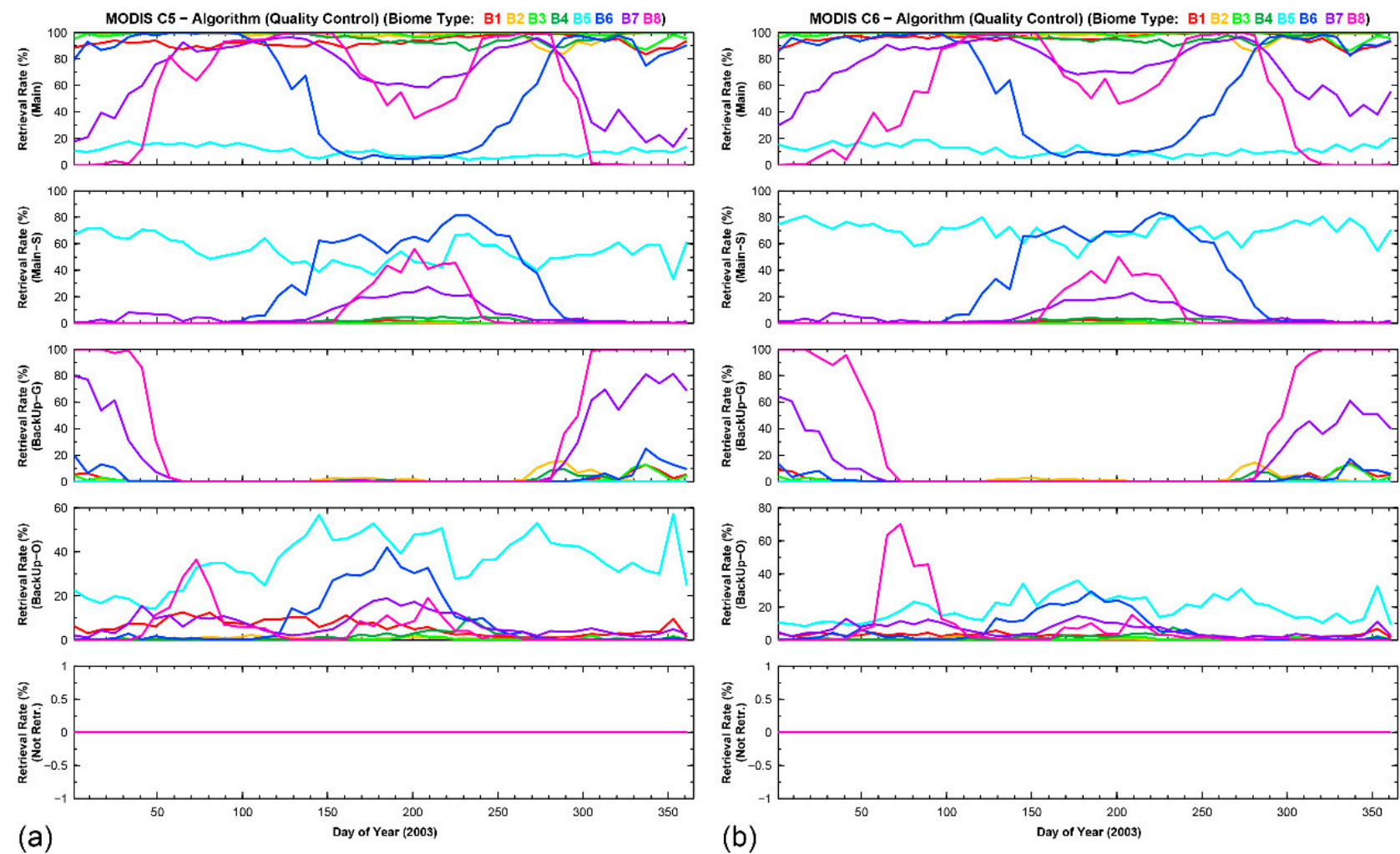


Figure S4. Seasonal variations of algorithm path of C5 and C6 in 2003.

Table S1. Biome specific differences between C5 and C6 FPAR at the global scale in 2003. Mean value and standard deviation of the difference and RMSE (values in brackets) between C5 and C6 (C6-C5) are listed in the table.

Biome Type	BTDF = 0/4	BTDF = 1/4	BTDF = 2/4	BTDF = 3/4	BTDF = 4/4
Grasses/Cereal crops (B1)	0.001 ± 0.051 (0.063)	0.002 ± 0.060 (0.081)	0.002 ± 0.063 (0.089)	0.004 ± 0.067 (0.096)	0.016 ± 0.071 (0.105)
Shrubs (B2)	0.003 ± 0.040 (0.047)	0.005 ± 0.054 (0.065)	0.007 ± 0.056 (0.069)	0.008 ± 0.057 (0.071)	0.010 ± 0.054 (0.075)
Broadleaf crops (B3)	0.003 ± 0.048 (0.054)	0.007 ± 0.055 (0.062)	0.017 ± 0.061 (0.072)	0.027 ± 0.068 (0.085)	0.046 ± 0.073 (0.101)
Savanna (B4)	0.000 ± 0.048 (0.064)	0.001 ± 0.055 (0.078)	0.000 ± 0.064 (0.090)	0.001 ± 0.074 (0.106)	0.005 ± 0.073 (0.108)
¹ EBF (B5)	0.005 ± 0.087 (0.142)	0.056 ± 0.101 (0.130)	0.112 ± 0.109 (0.151)	0.167 ± 0.124 (0.185)	0.212 ± 0.152 (0.223)
² DBF (B6)	0.010 ± 0.037 (0.131)	0.010 ± 0.054 (0.125)	0.013 ± 0.070 (0.132)	0.017 ± 0.084 (0.141)	0.039 ± 0.084 (0.134)
³ ENF (B7)	0.019 ± 0.072 (0.132)	0.043 ± 0.075 (0.140)	0.068 ± 0.086 (0.151)	0.097 ± 0.102 (0.163)	0.118 ± 0.124 (0.183)
⁴ DNF (B8)	0.019 ± 0.071 (0.166)	0.048 ± 0.084 (0.153)	0.076 ± 0.096 (0.161)	0.098 ± 0.111 (0.174)	0.118 ± 0.138 (0.195)
Mean	0.003 ± 0.051 (0.091)	0.007 ± 0.061 (0.098)	0.009 ± 0.071 (0.108)	0.010 ± 0.084 (0.119)	0.006 ± 0.095 (0.127)
Overall			−0.004 ± 0.066 (0.102)		

¹ Evergreen Broadleaf forest; ² Deciduous Broadleaf forest; ³ Evergreen Needleleaf forest; ⁴ Deciduous Needleleaf forest.