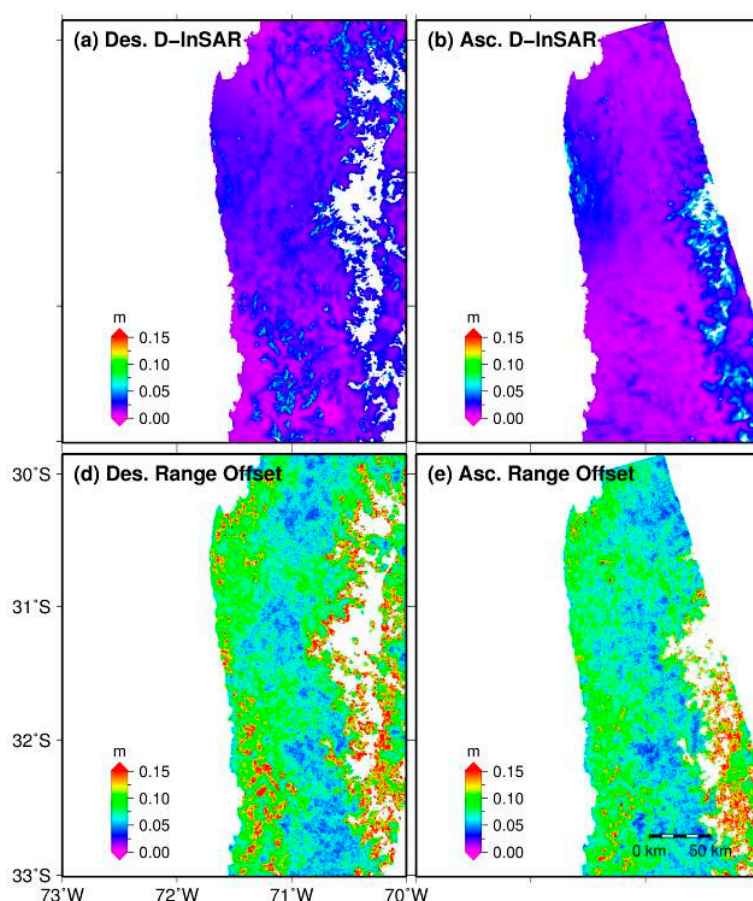


# Supplementary Materials: Continent-Wide 2-D Co-Seismic Deformation of the 2015 Mw 8.3 Illapel, Chile Earthquake Derived from Sentinel-1A Data: Correction of Azimuth Co-Registration Error

Bing Xu, Zhiwei Li, Guangcai Feng, Zeyu Zhang, Qijie Wang, Jun Hu and Xingguo Chen



**Figure S1.** Local standard deviations of LOS measurements. (a) Ascending LOS D-InSAR; (b) ascending LOS offset tracking; (c) descending LOS D-InSAR; and (d) descending LOS offset tracking.



© 2016 by the authors; licensee MDPI, Basel, Switzerland. This article is an open access article distributed under the terms and conditions of the Creative Commons by Attribution (CC-BY) license (<http://creativecommons.org/licenses/by/4.0/>).