

Supplementary Materials: Monitoring Annual Urban Changes in a Rapidly Growing Portion of Northwest Arkansas with a 20-Year Landsat Record

Ryan Reynolds, Lu Liang, XueCao Li and John Dennis

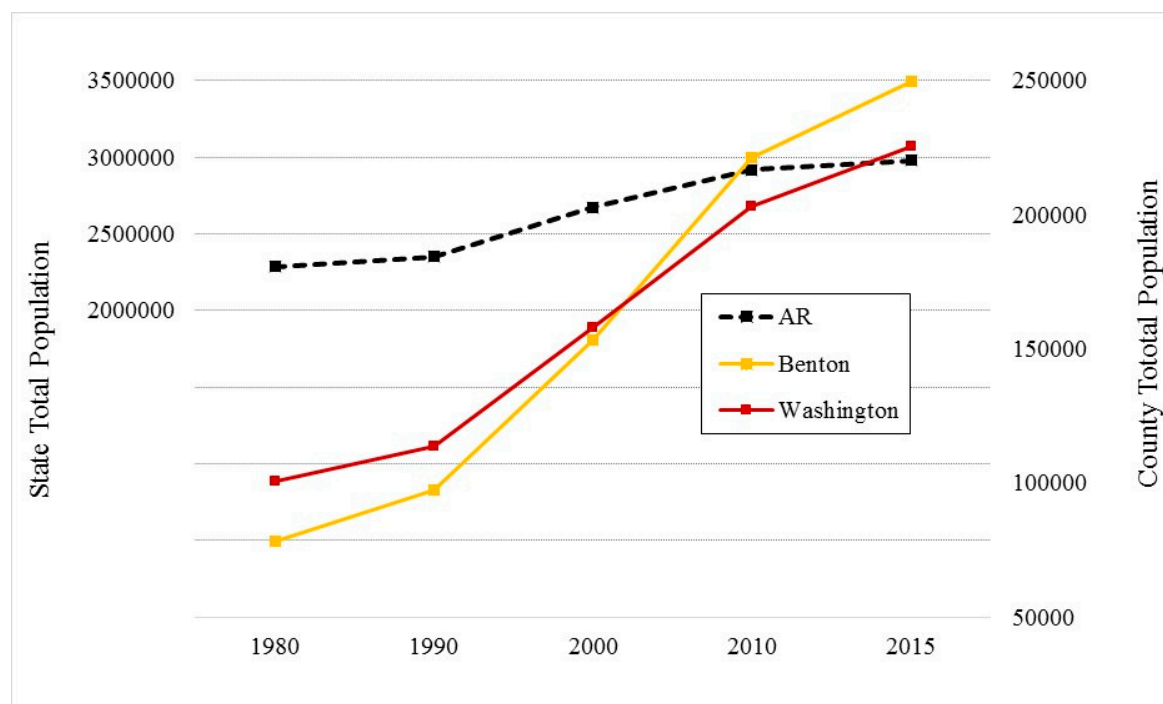
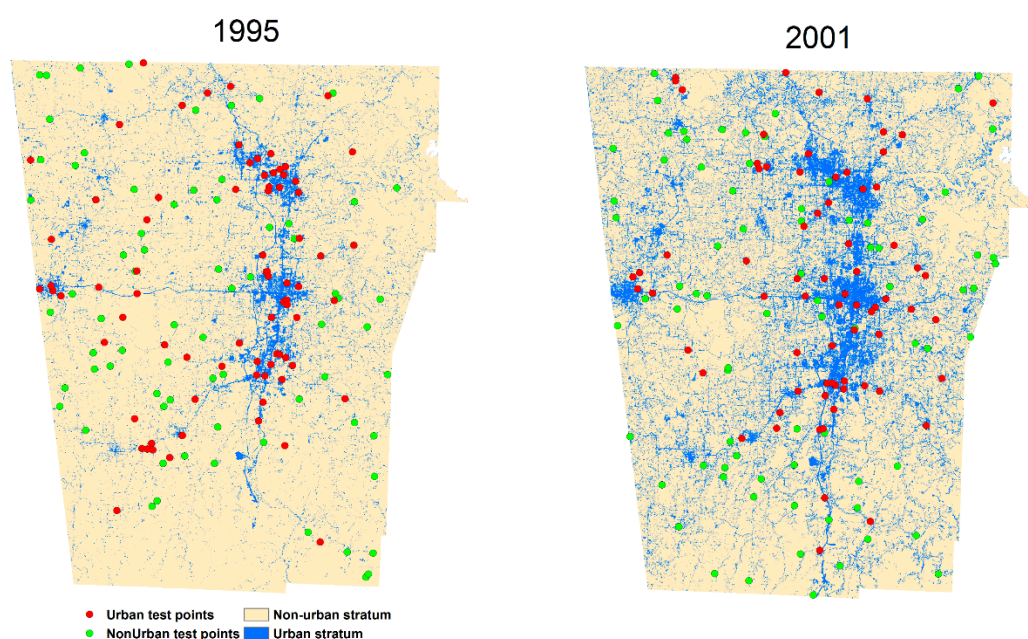


Figure S1. Total population changes from 1980 to 2015 in Arkansas State, Benton County and Washington County. Data was acquired from: Minnesota Population Center. National Historical Geographic Information System: Version 11.0 [Database]. Minneapolis: University of Minnesota. 2016. <http://doi.org/10.18128/D050.V11.0>.



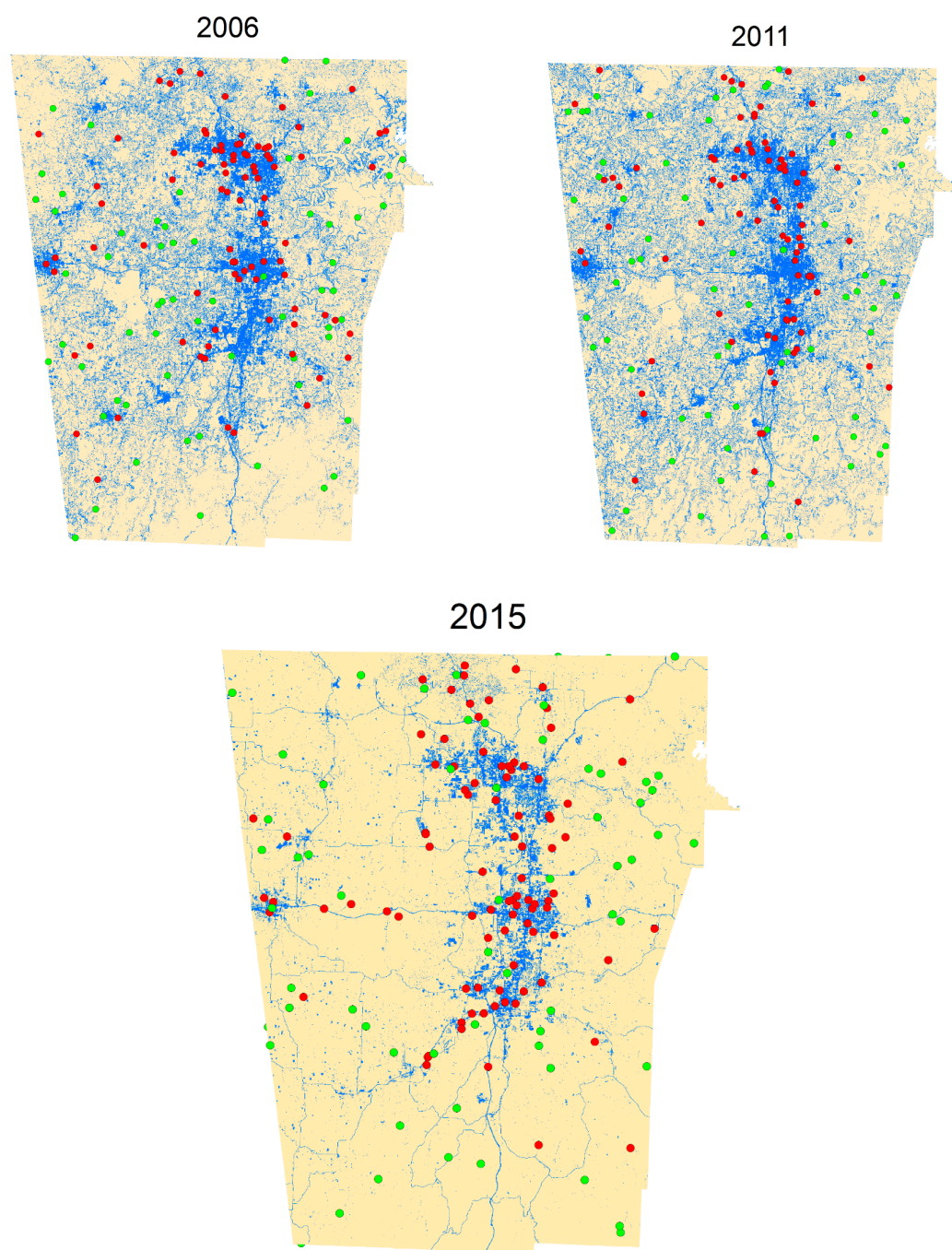
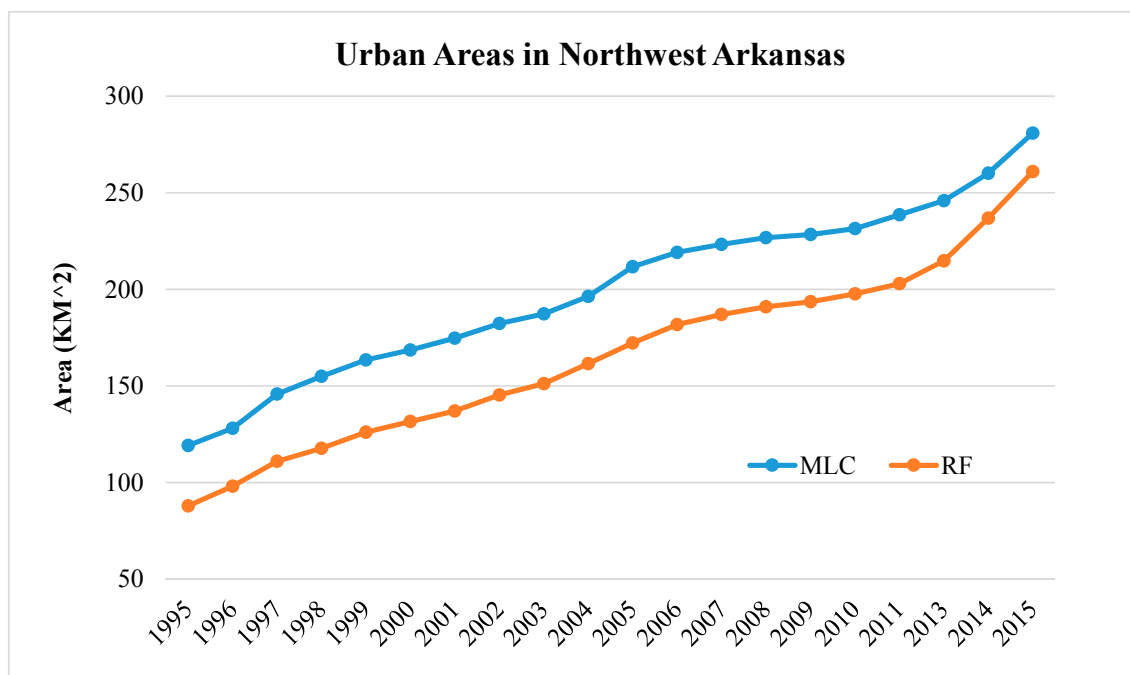
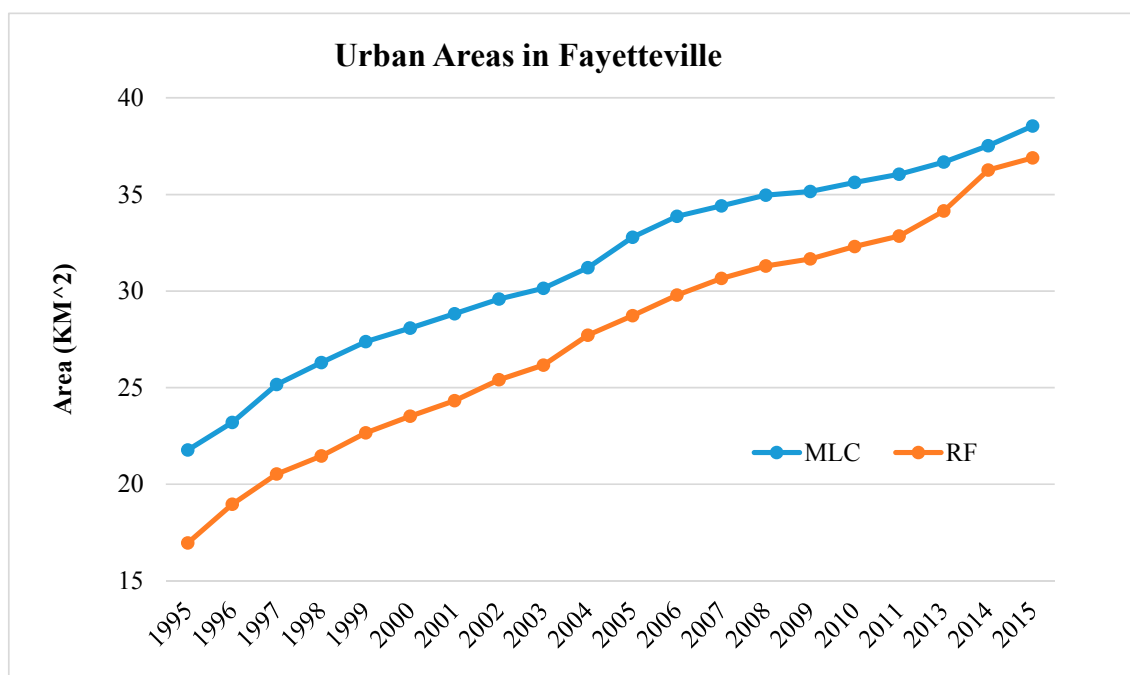


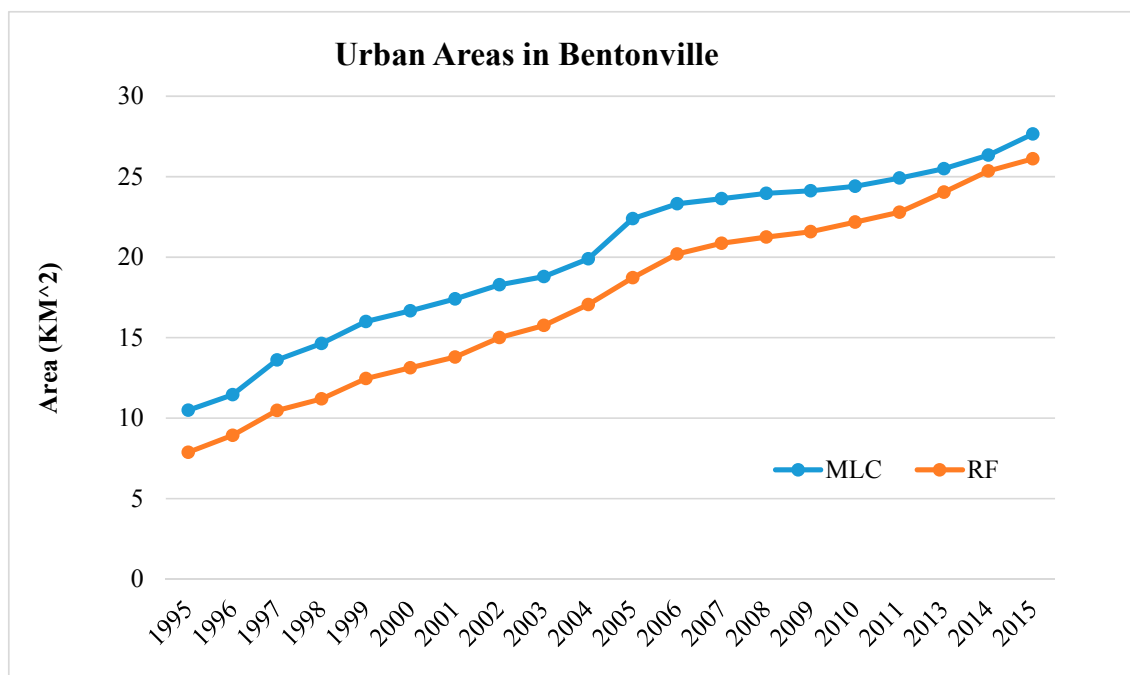
Figure S2. Validation point locations overlaid on sampling strata for test years.



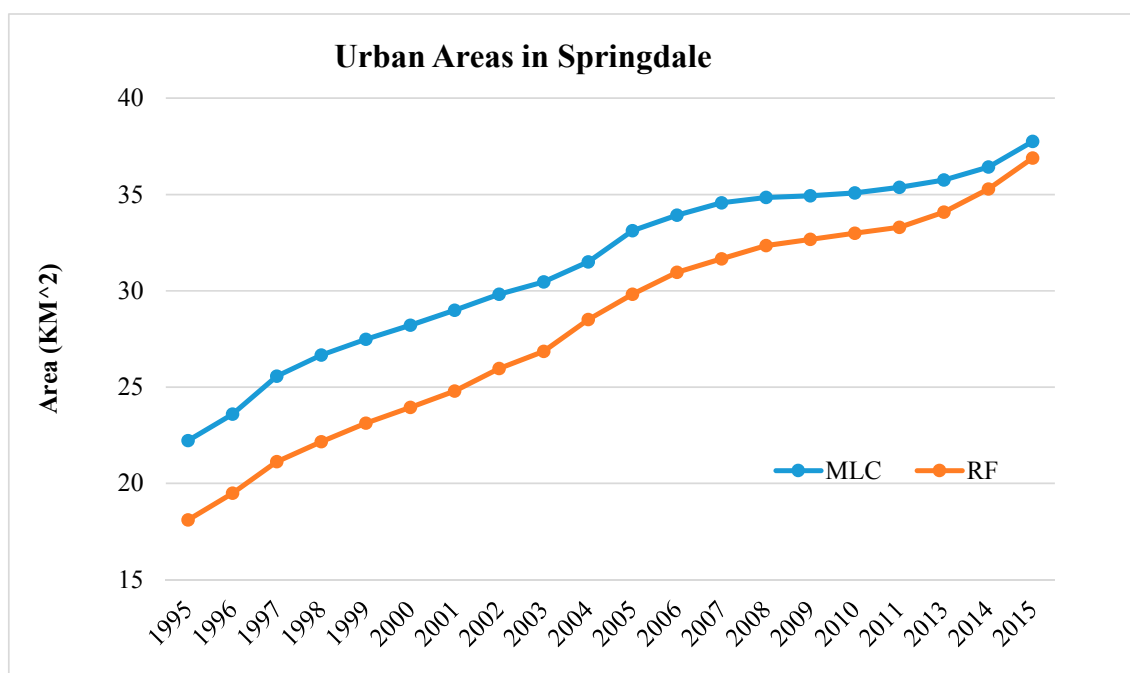
(a)



(b)



(c)



(d)

Figure S3. Urban area changes in Northwest Arkansas Area from 1995 to 2015. (a) The whole Northwest Arkansas Area; (b) Fayetteville city zone; (c) Bentonville city zone; (d) Springdale city zone.



© 2016 by the authors; licensee MDPI, Basel, Switzerland. This article is an open access article distributed under the terms and conditions of the Creative Commons Attribution (CC-BY) license (<http://creativecommons.org/licenses/by/4.0/>).