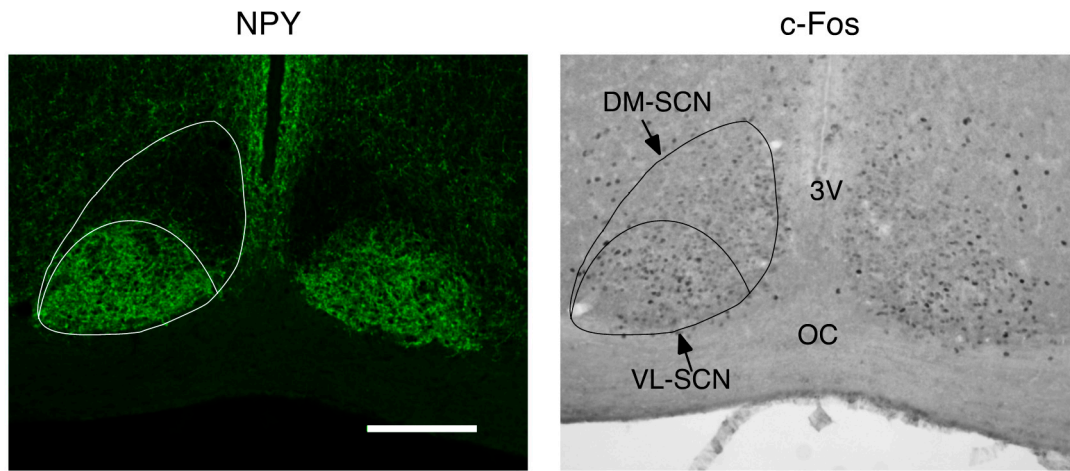


Suprachiasmatic nucleus (SCN)



Intergeniculate leaflet (IGL)

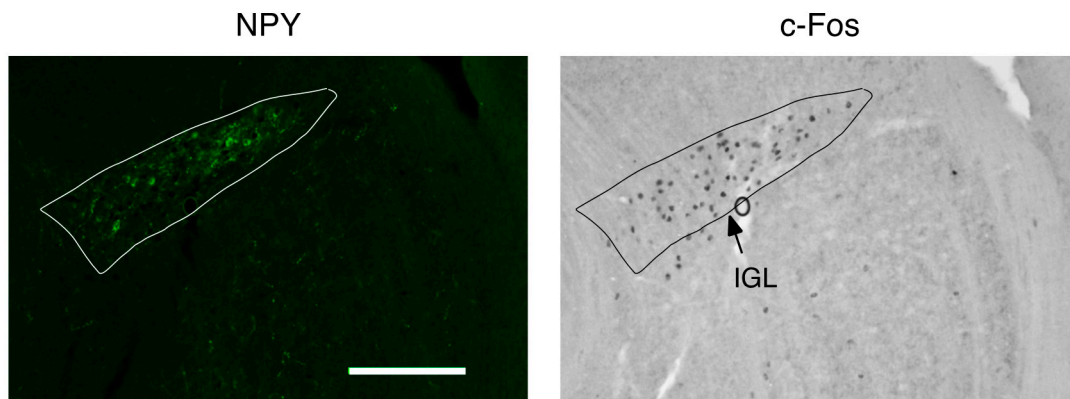


Figure S1. Identification of ventrolateral and dorsolateral regions of the sprachiasmatic nucleus, and intergeniculate leaflet with neuropeptide Y immunofluorescence image. Microscopic images of neuropeptide Y (NPY) fluorescent-labelled immunoreactive region and c-Fos immunoreactive nuclei in the suprachiasmatic nucleus (SCN; top) and intergeniculate nucleus (IGL; bottom) of the same section. DM-SCN, dorsomedial SCN; VL-SCN, ventrolateral SCN; 3V, third ventricle; OC, optic chiasma. Scale bar = 200 μ m. We determined the area of the VL-SCN as the area in which neuronal terminals stained with NPY antibody are densely distributed, and the area of the intergeniculate leaflet as the area in which neurons stained with NPY antibody are densely located.