

Assessing the association between important dietary habits and osteoporosis: A genetic correlation and two-sample Mendelian randomization study

Supplemental materials

Supplemental Figure S1:

Forest plots of variant specific inverse variance estimates for the causal association between OP and candidate dietary habits.

Supplemental Figure S2:

Scatterplots of the causal relationships between OP and candidate dietary habits.

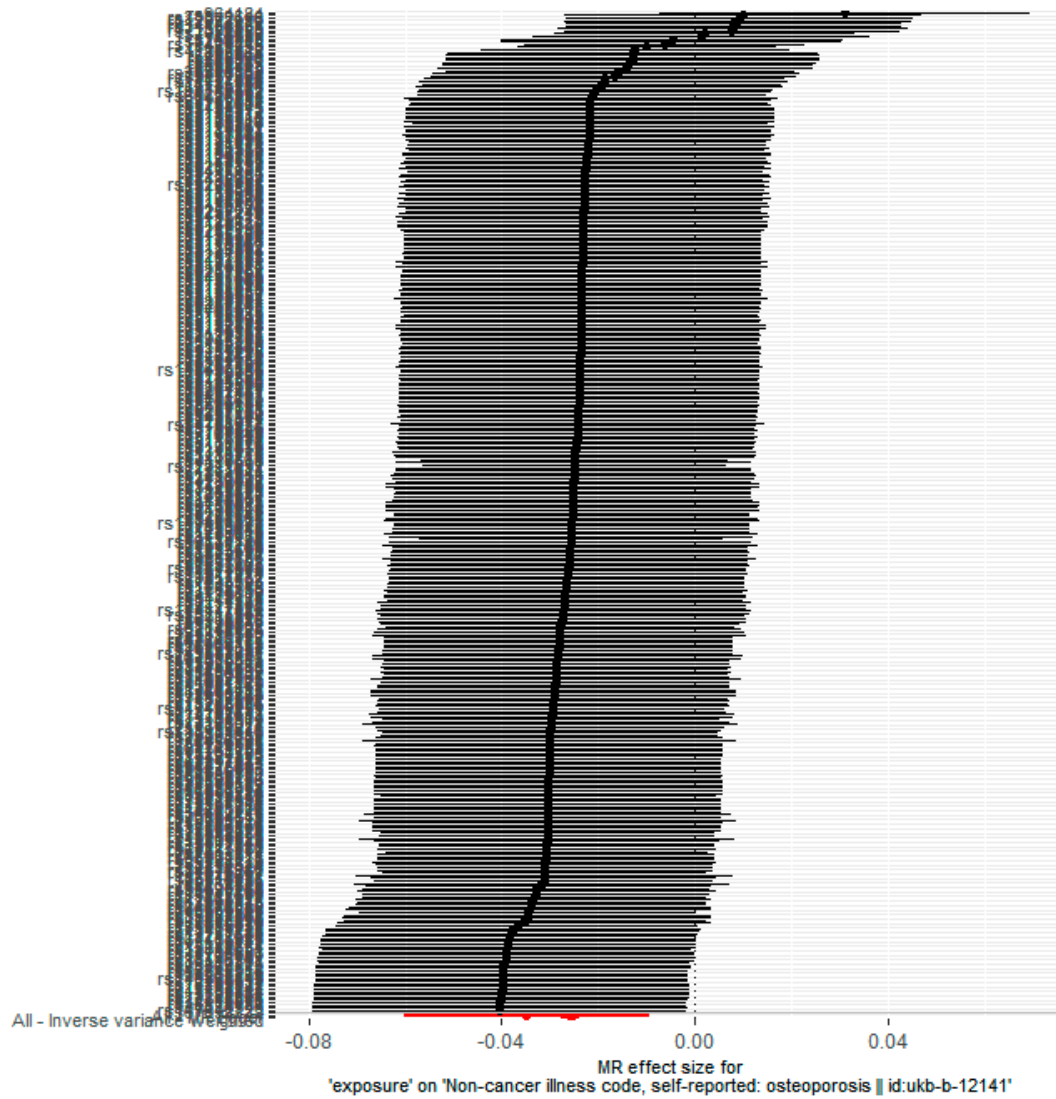
Supplemental Figure S3:

Funnel plots of the causal association between OP and candidate dietary habits.

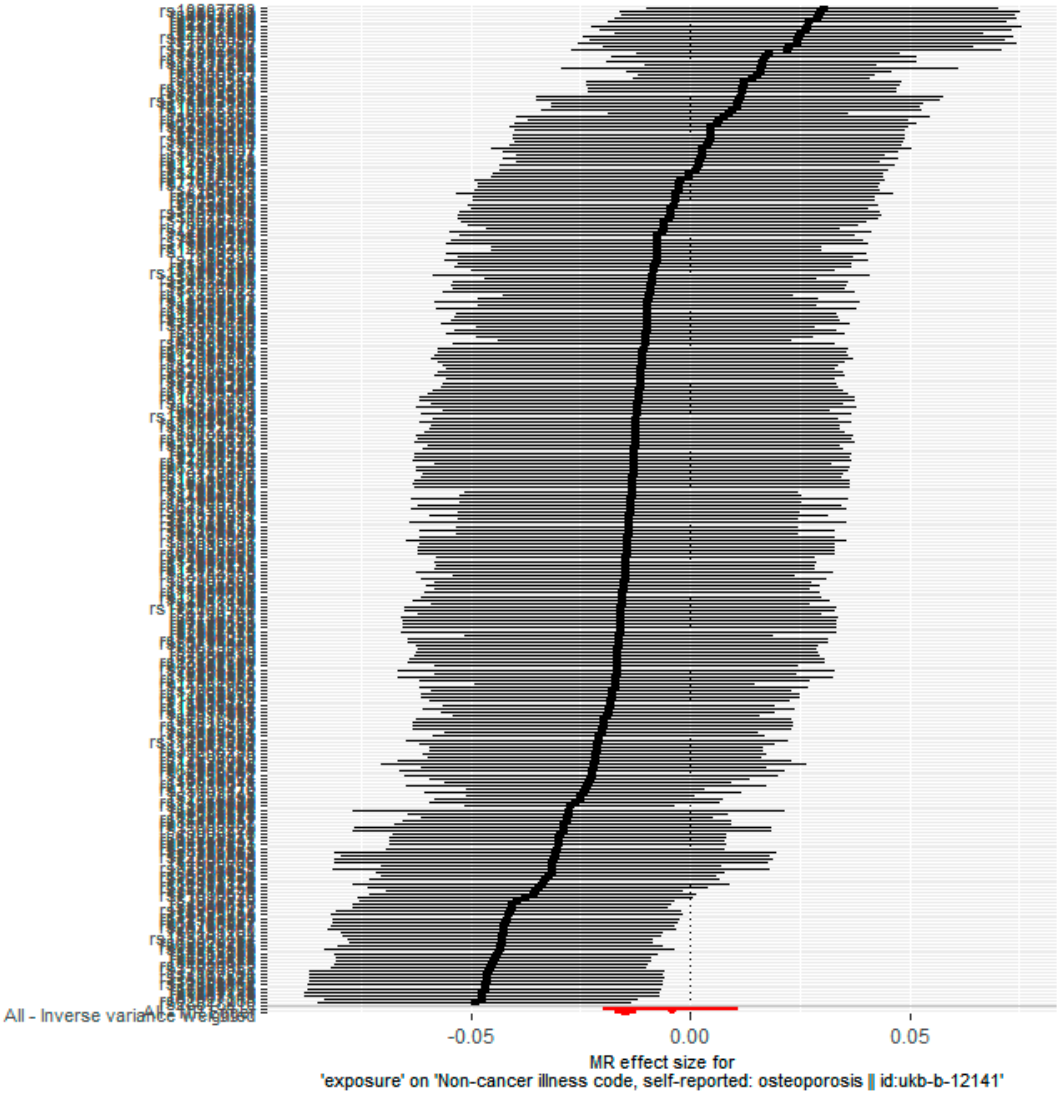
Supplemental Figure S1:

Forest plots of variant specific inverse variance estimates for the causal association between OP and candidate dietary habits.

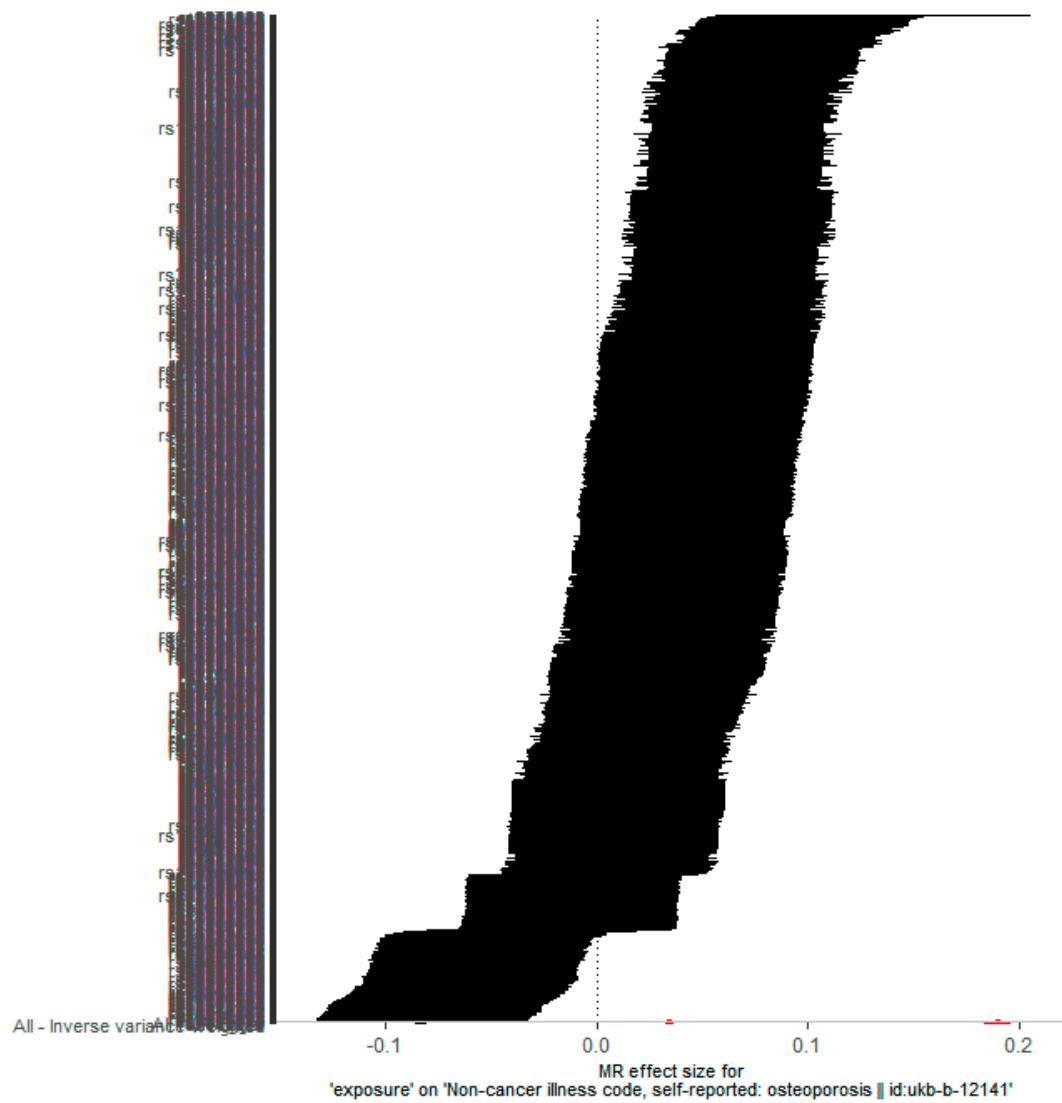
A:OP and candidate PC17



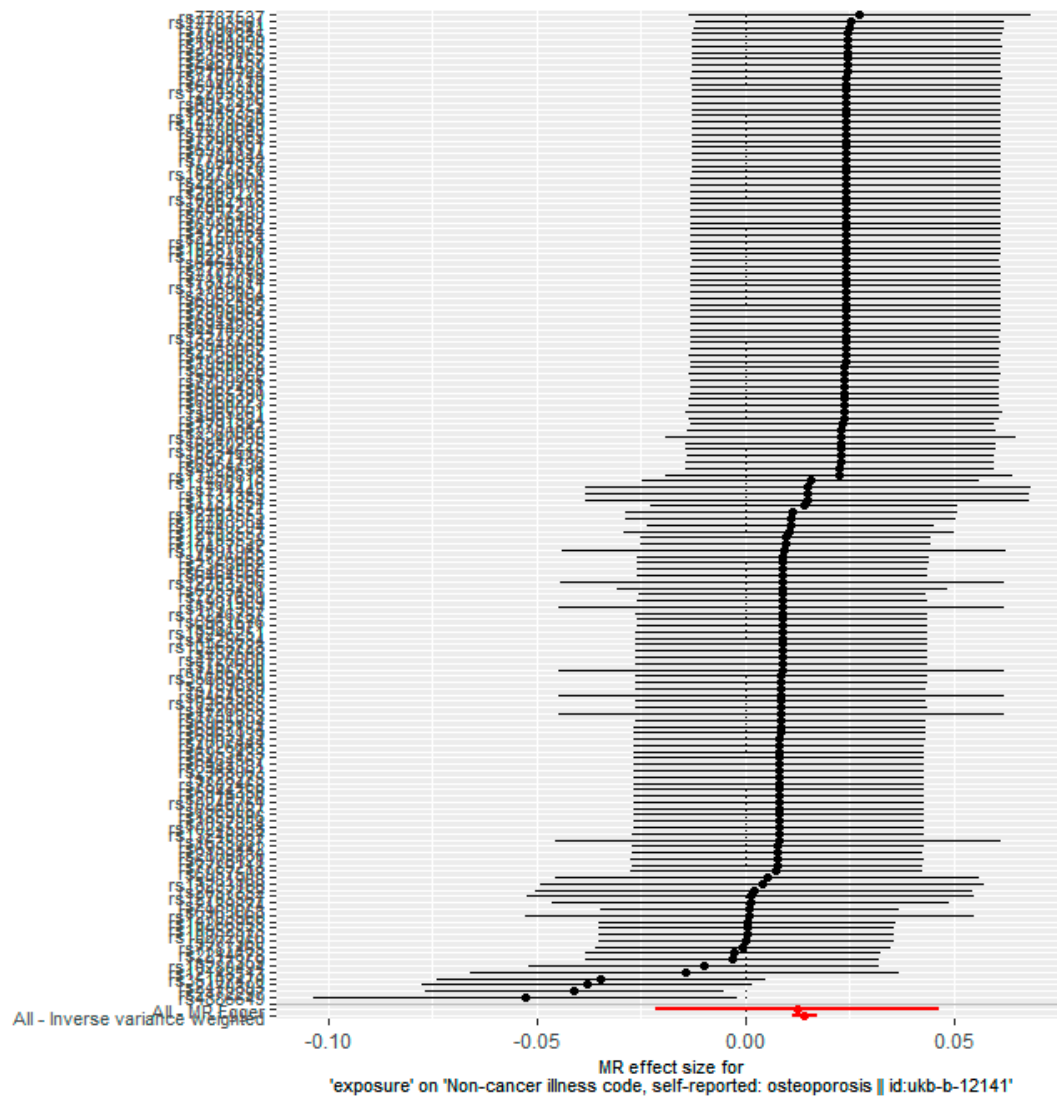
B:OP and candidate PC35



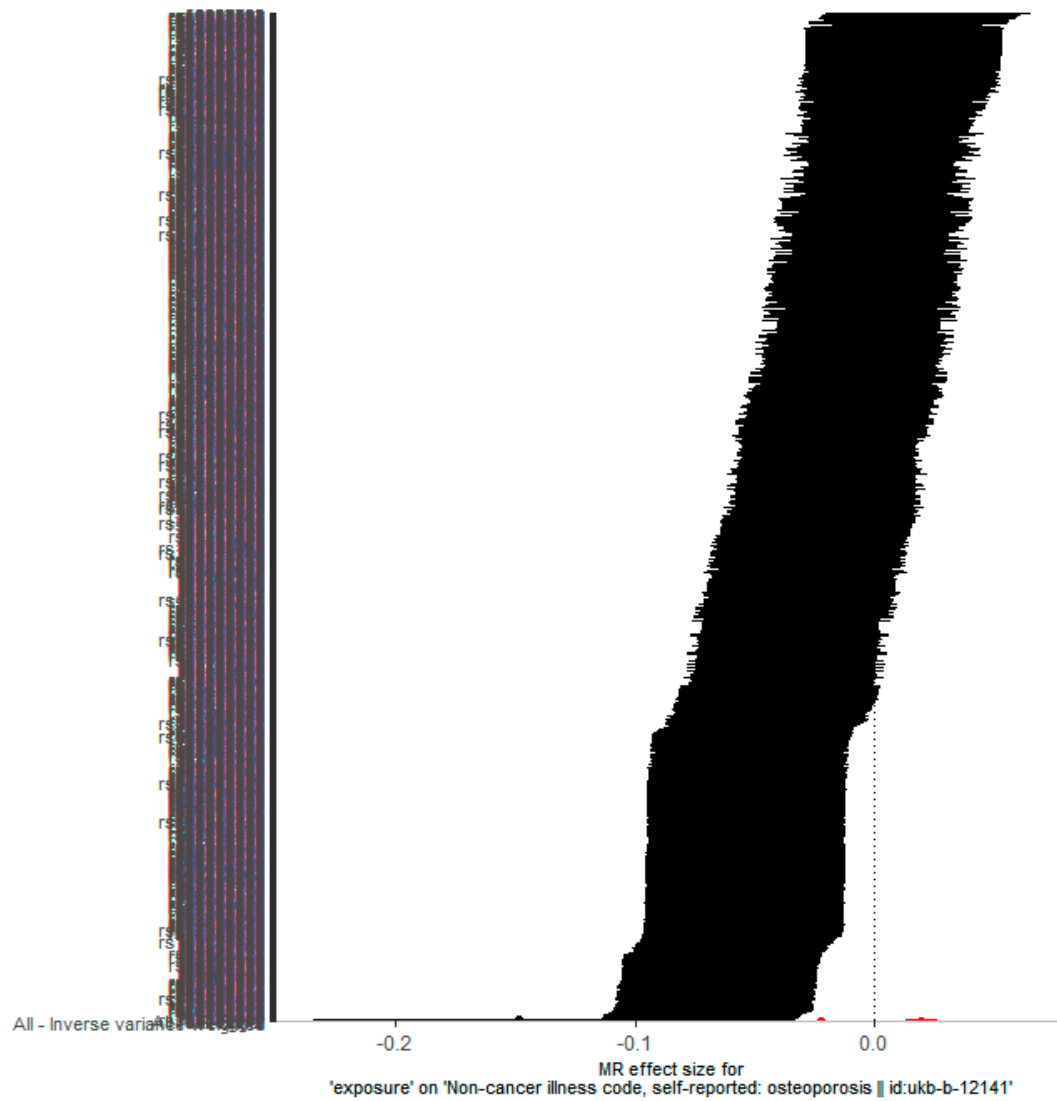
C:OP and candidate PC36



D:OP and candidate PC39



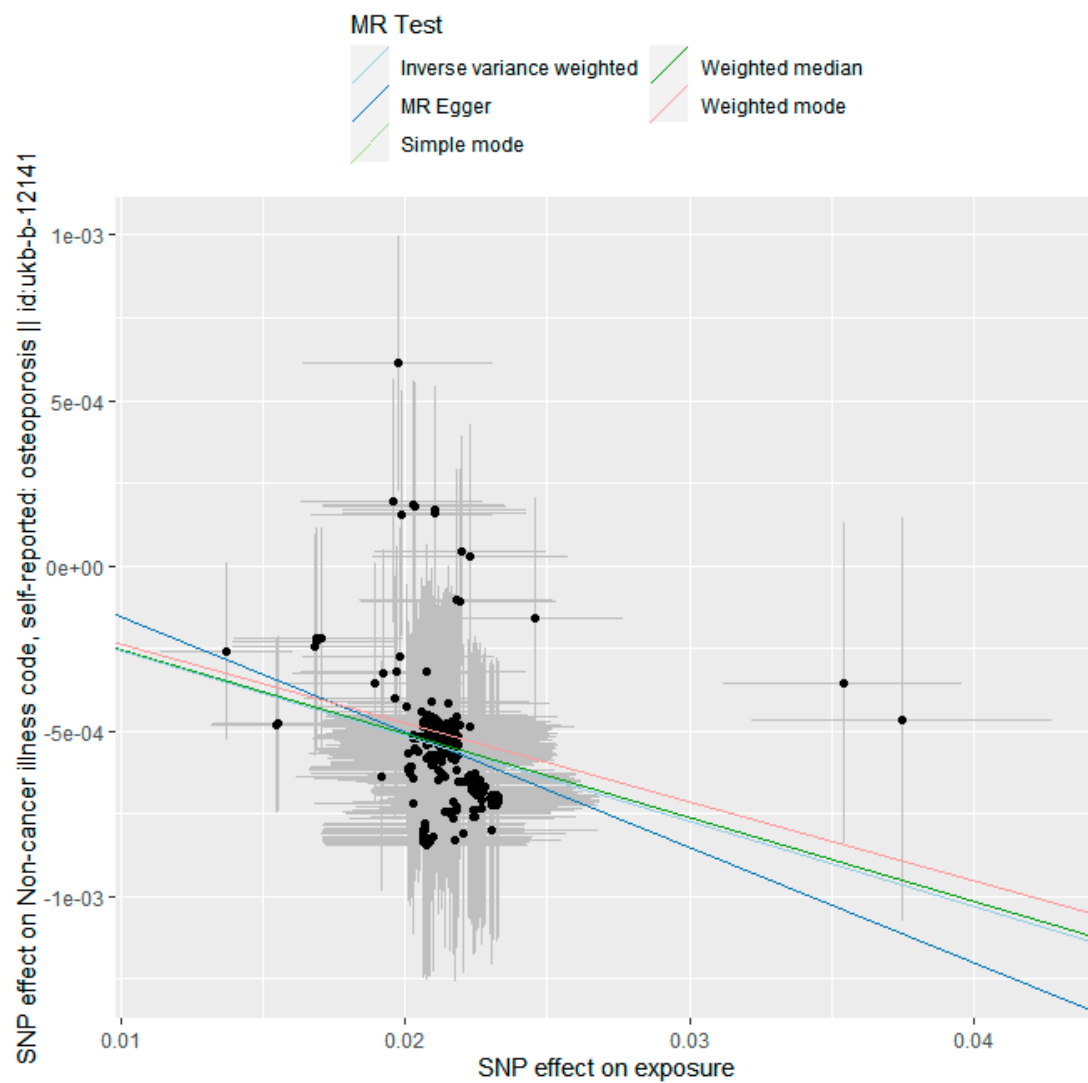
E:OP and candidate tablespoons of raw vegetables per day



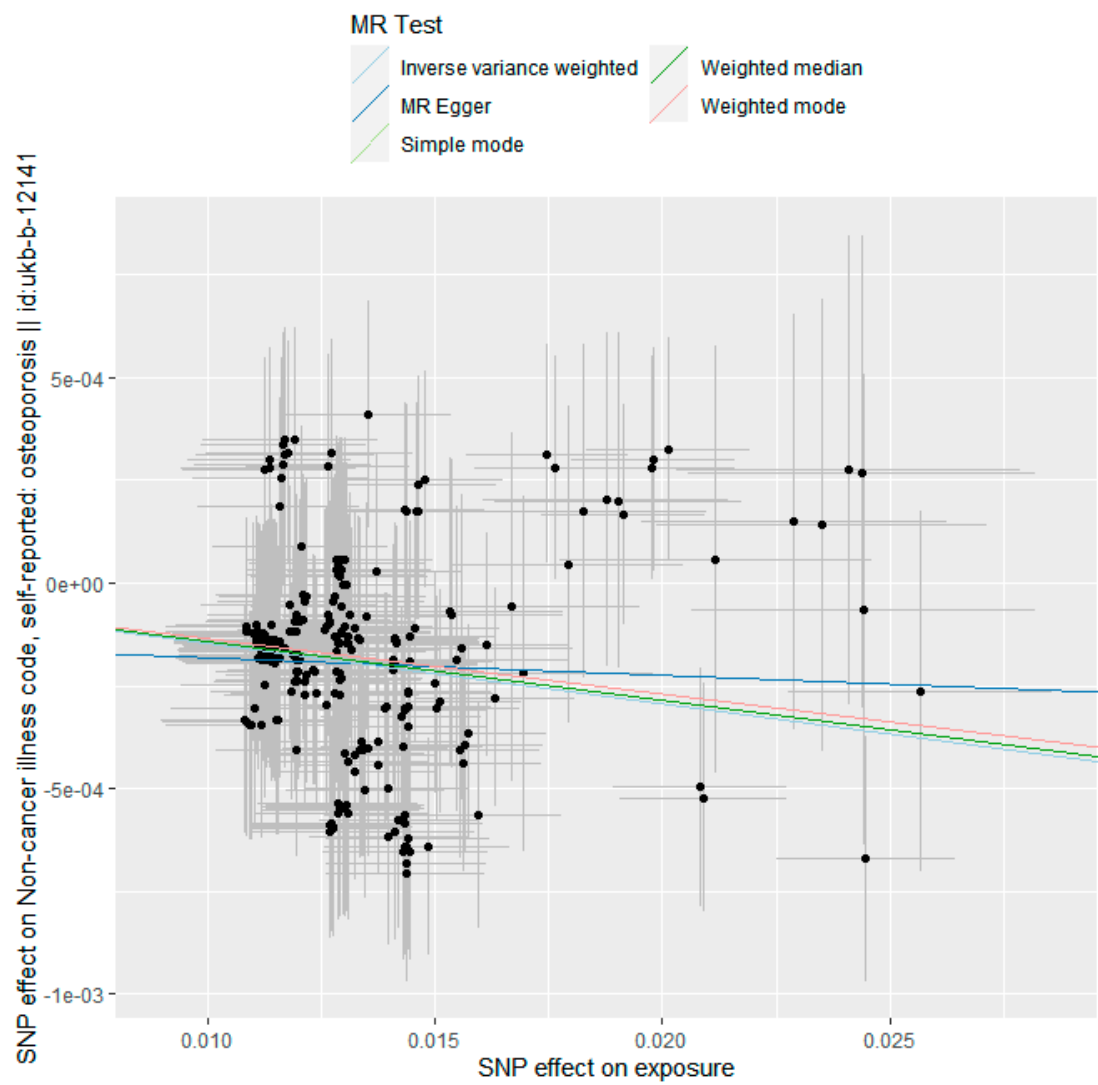
Supplemental Figure S2:

Scatterplots of the causal relationships between OP and candidate dietary habits.

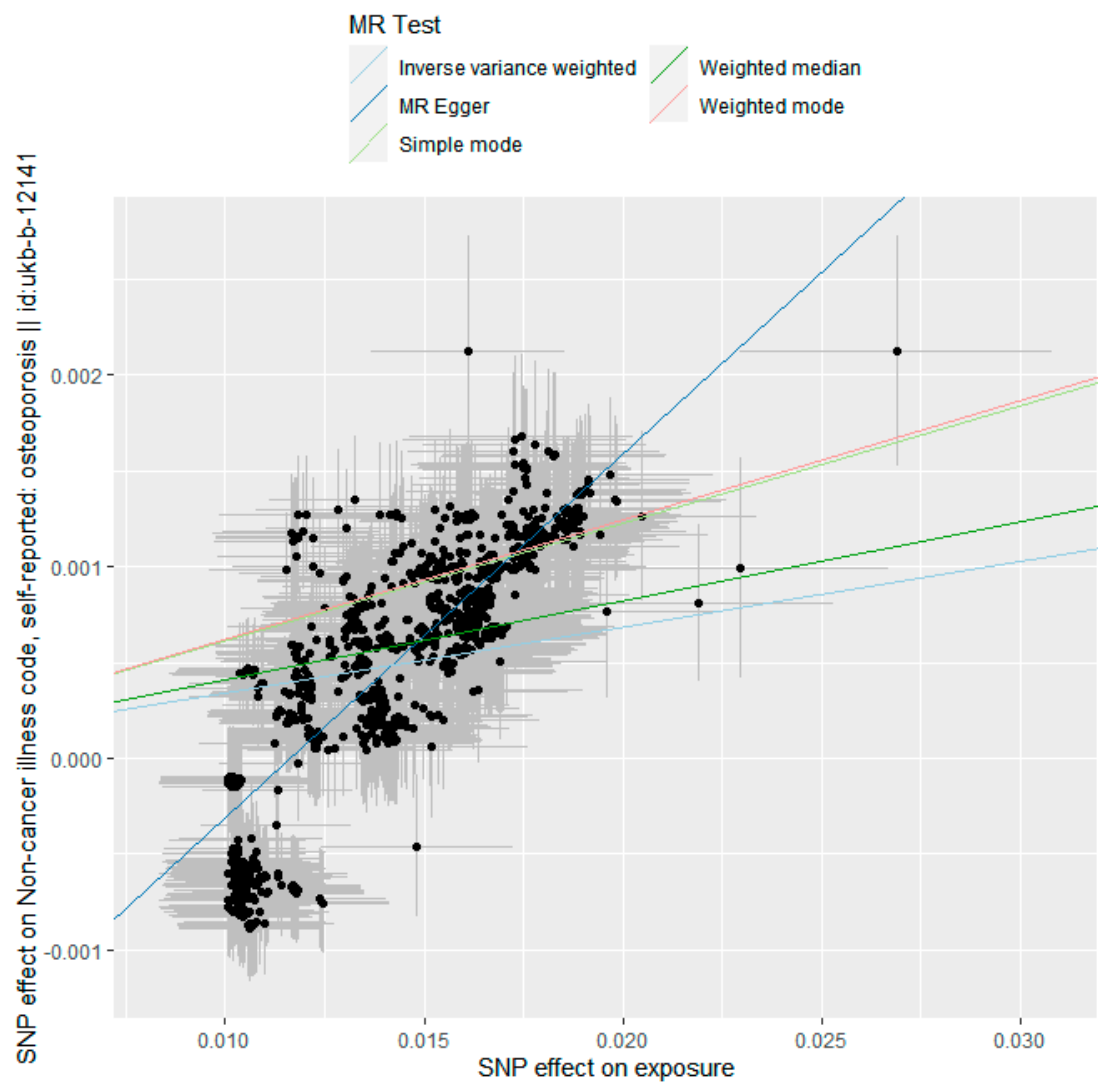
A:OP and candidate PC17



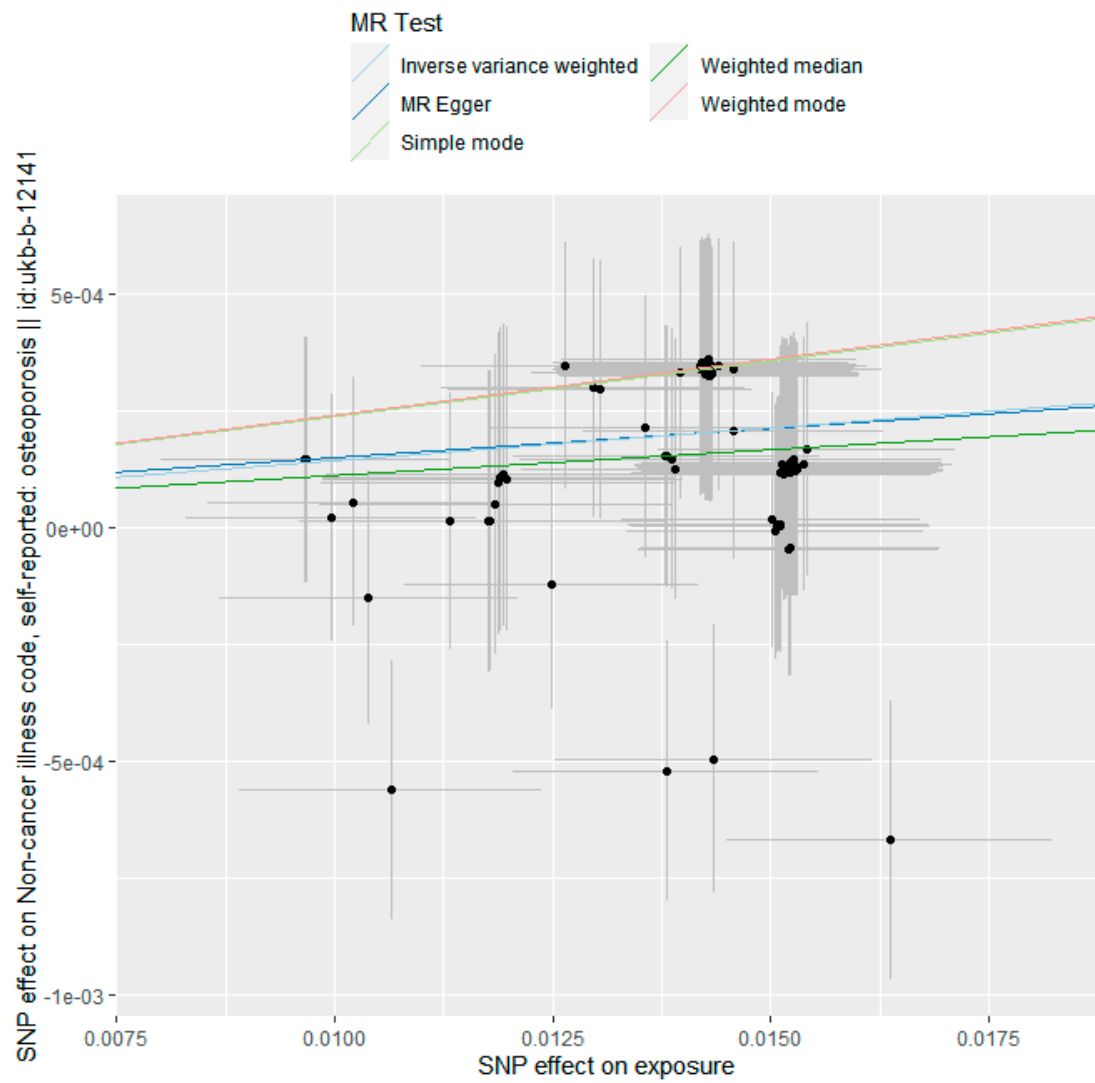
B:OP and candidate PC35



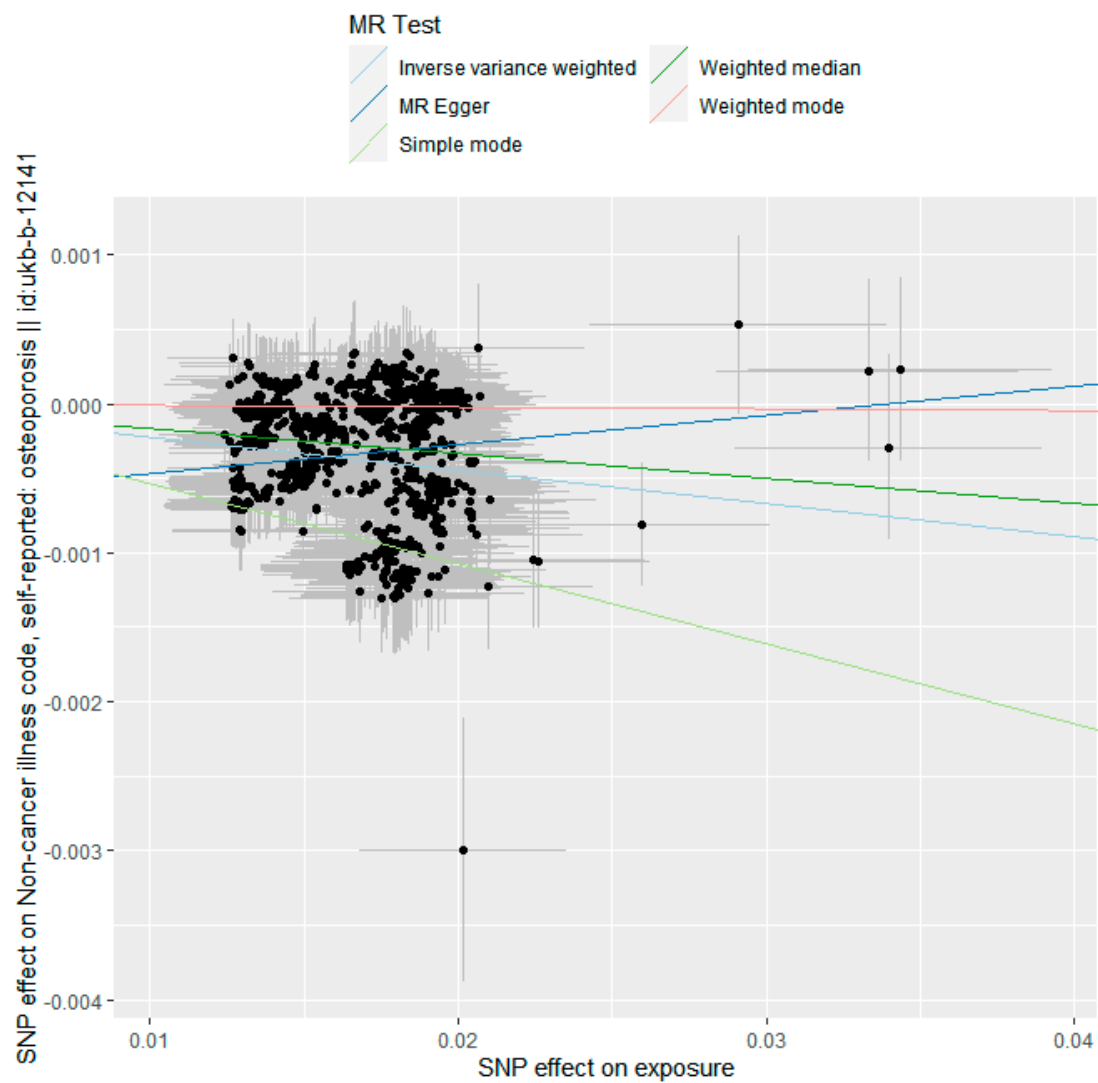
C:OP and candidate PC36



D:OP and candidate PC39



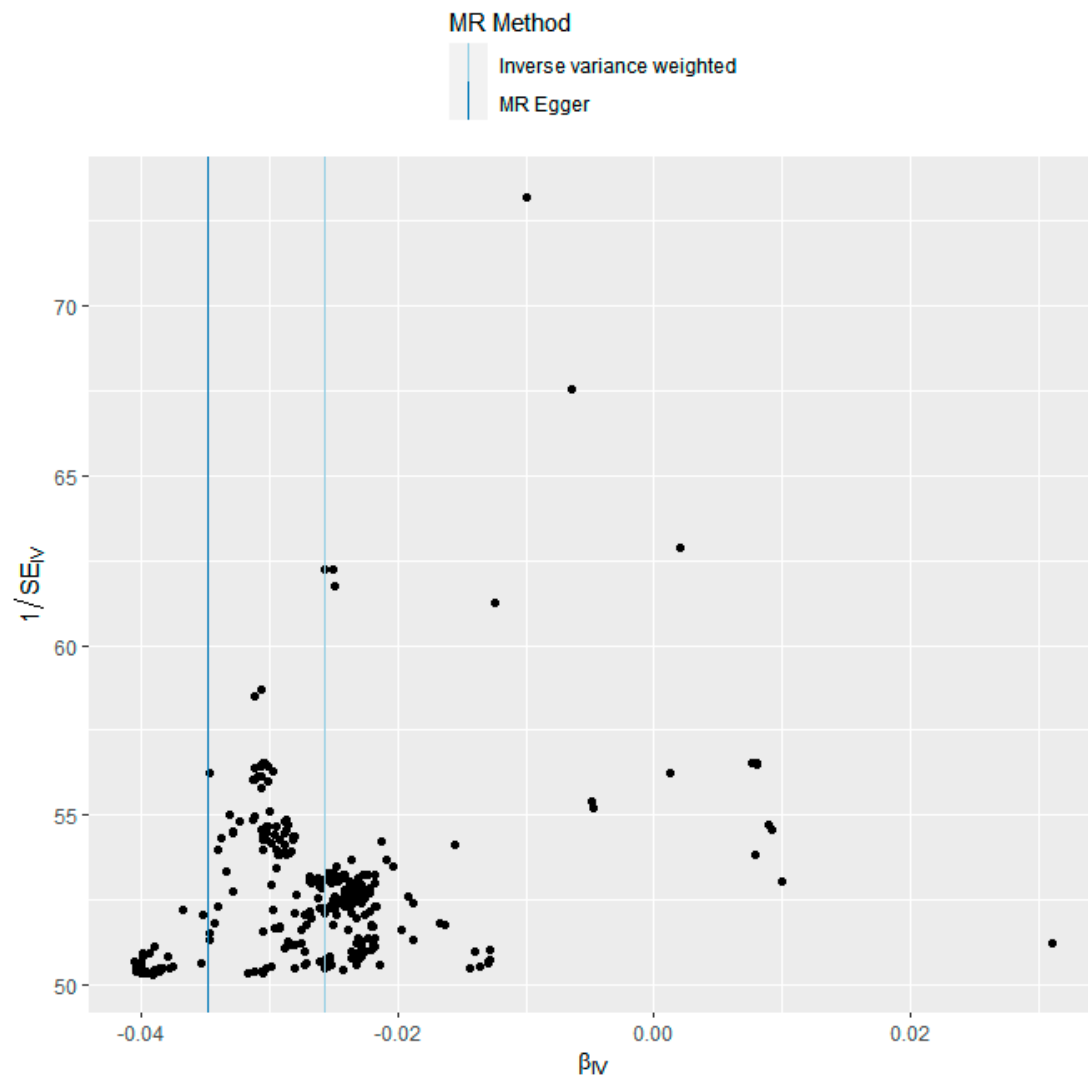
E:OP and candidate tablespoons of raw vegetables per day



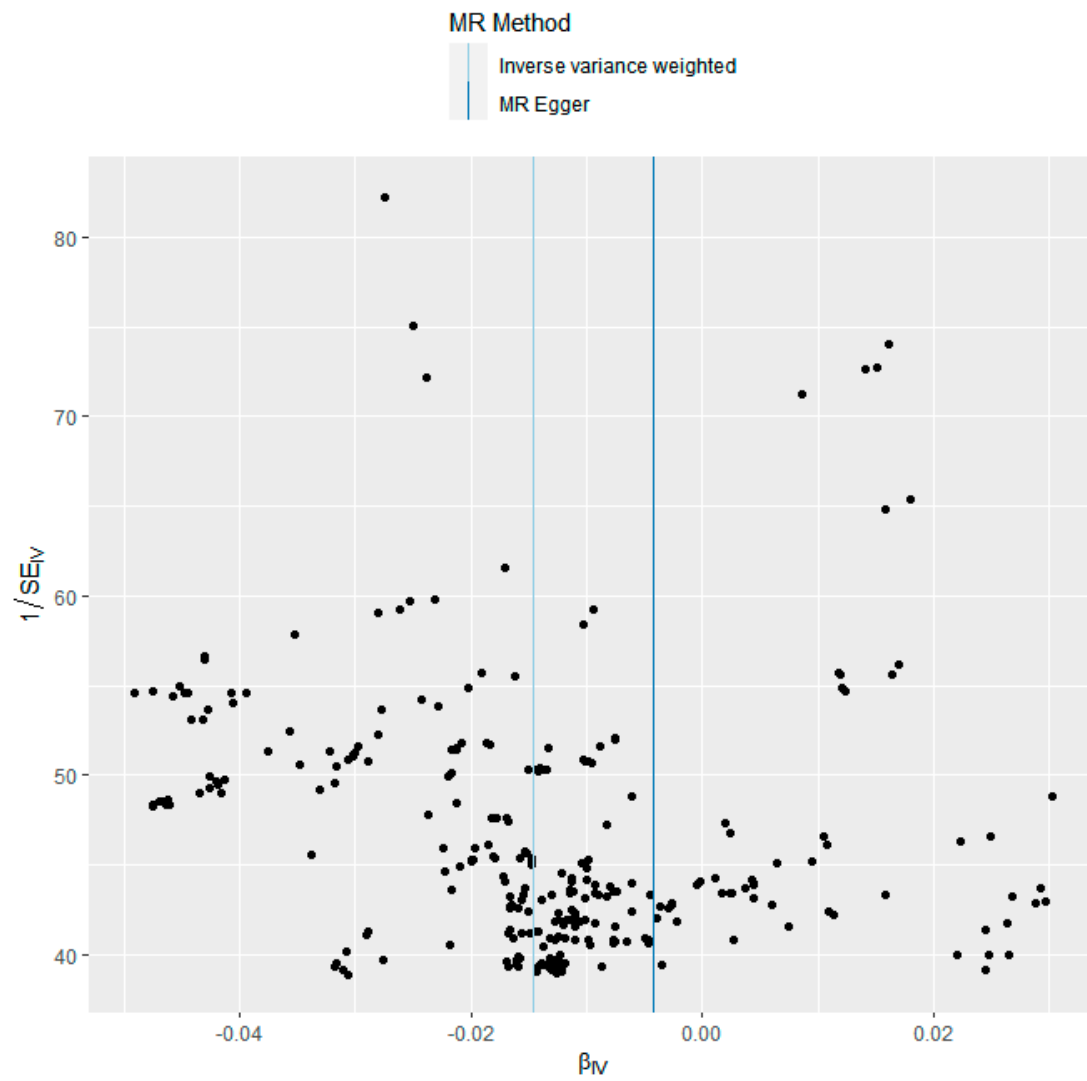
Supplemental Figure S3:

Funnel plots of the causal association between OP and candidate dietary habits.

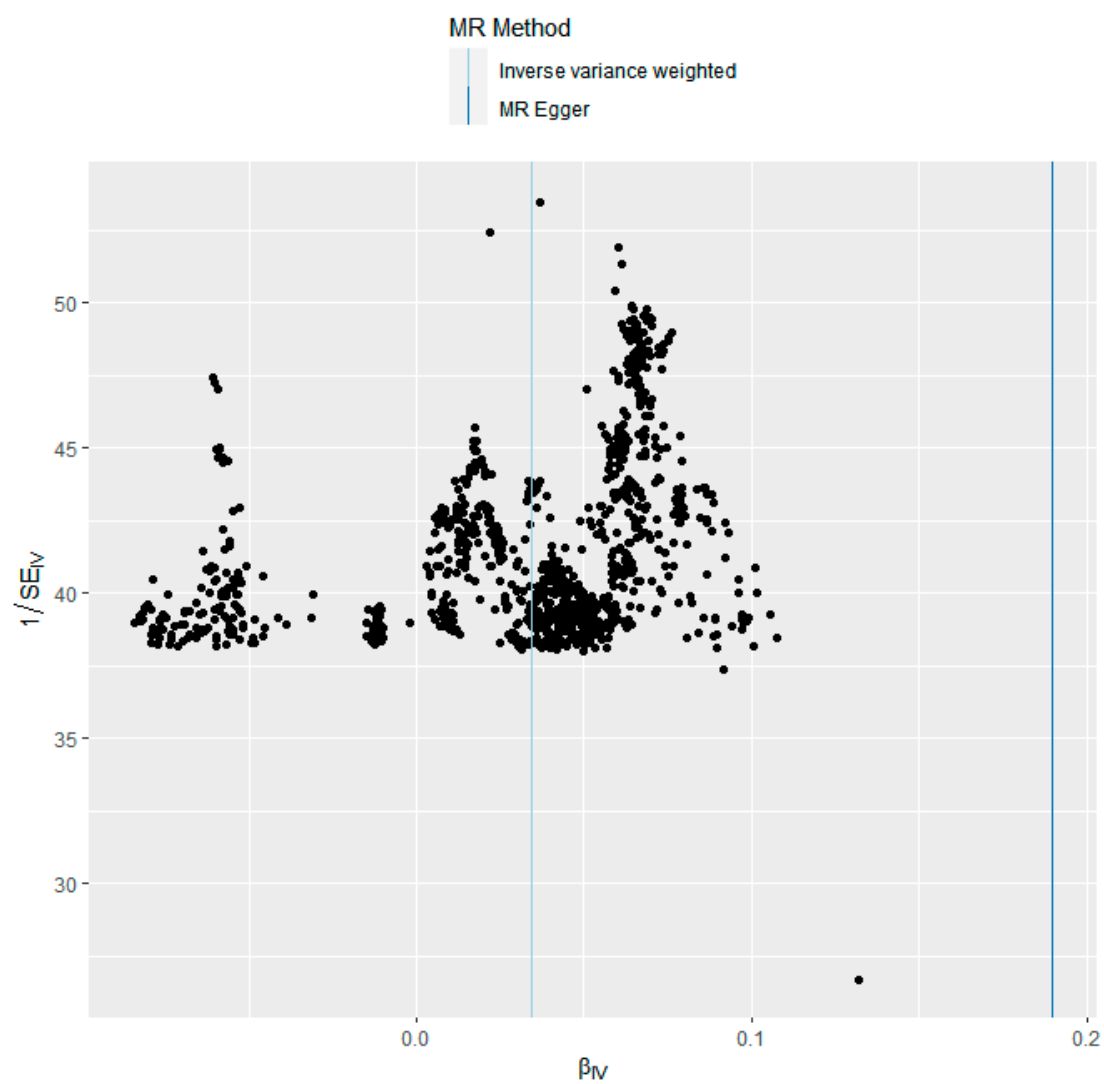
A:OP and candidate PC17



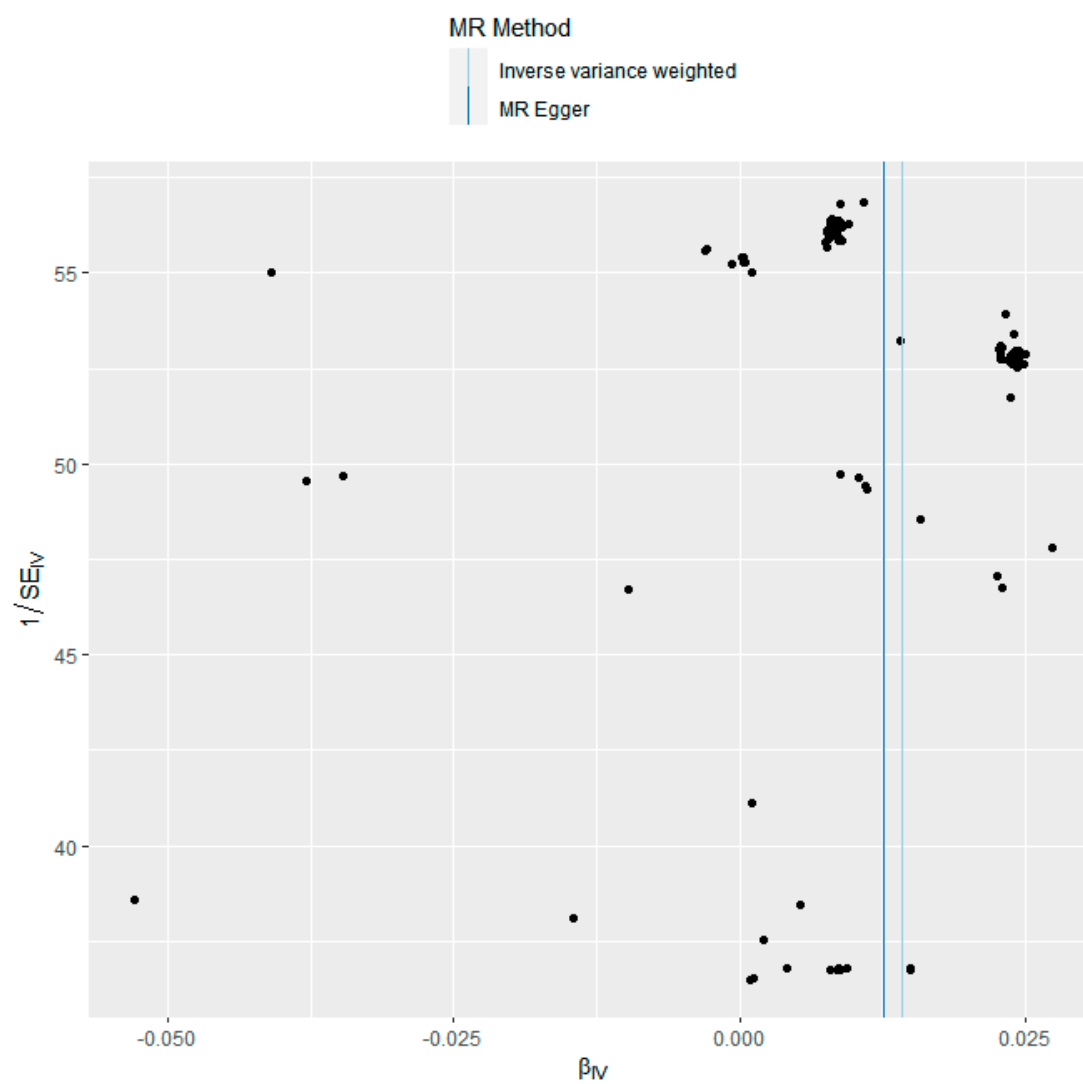
B:OP and candidate PC35



C:OP and candidate PC36



D:OP and candidate PC39



E:OP and candidate tablespoons of raw vegetables per day

