

Supplementary Materials: Development of a Sensitive Enzyme-Linked Immunosorbent Assay and Rapid Gold Nanoparticle Immunochromatographic Strip for Detecting Citrinin in *Monascus* Fermented Food

Shih-Wei Wu, Yao-An Yu, Biing-Hui Liu and Feng-Yih Yu

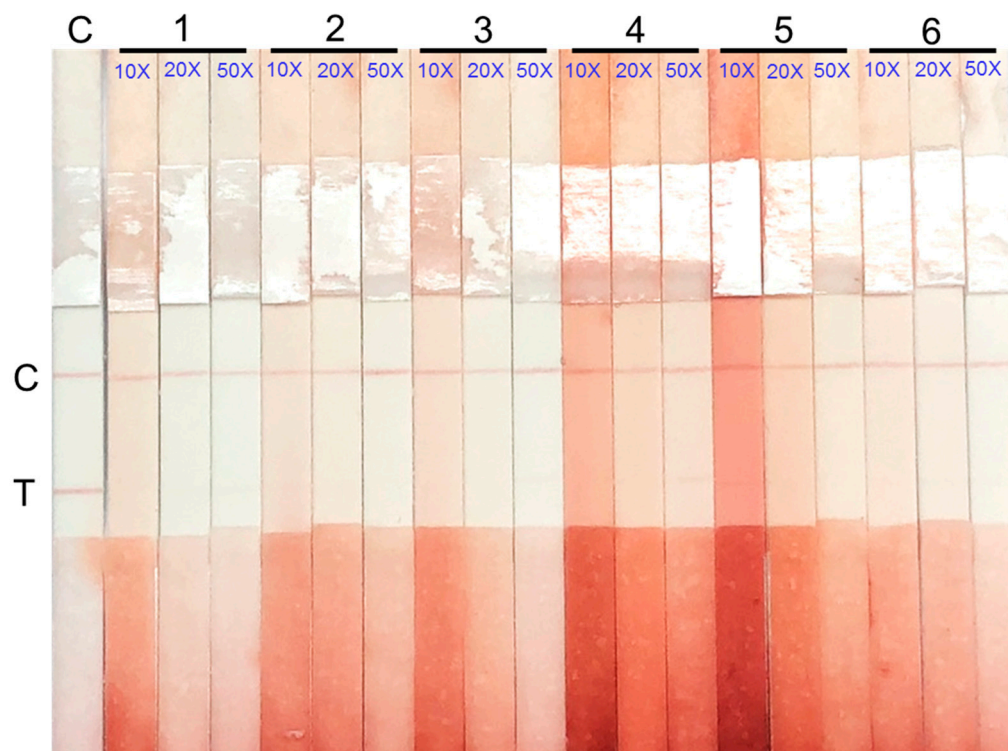


Figure S1. Various dilutions of extraction (1:10; 1:20; 1:50) of red yeast samples 1–6 were subjected to the immunostrip tests.