

Supplementary Materials: New Isolated *Metschnikowia pulcherrima* Strains from Apples for Postharvest Biocontrol of *Penicillium expansum* and Patulin Accumulation

Laura Settler-Ramírez, Gracia López-Carballo, Pilar Hernández-Muñoz, Angélique Fontana, Caro-line Strub and Sabine Schorr-Galindo

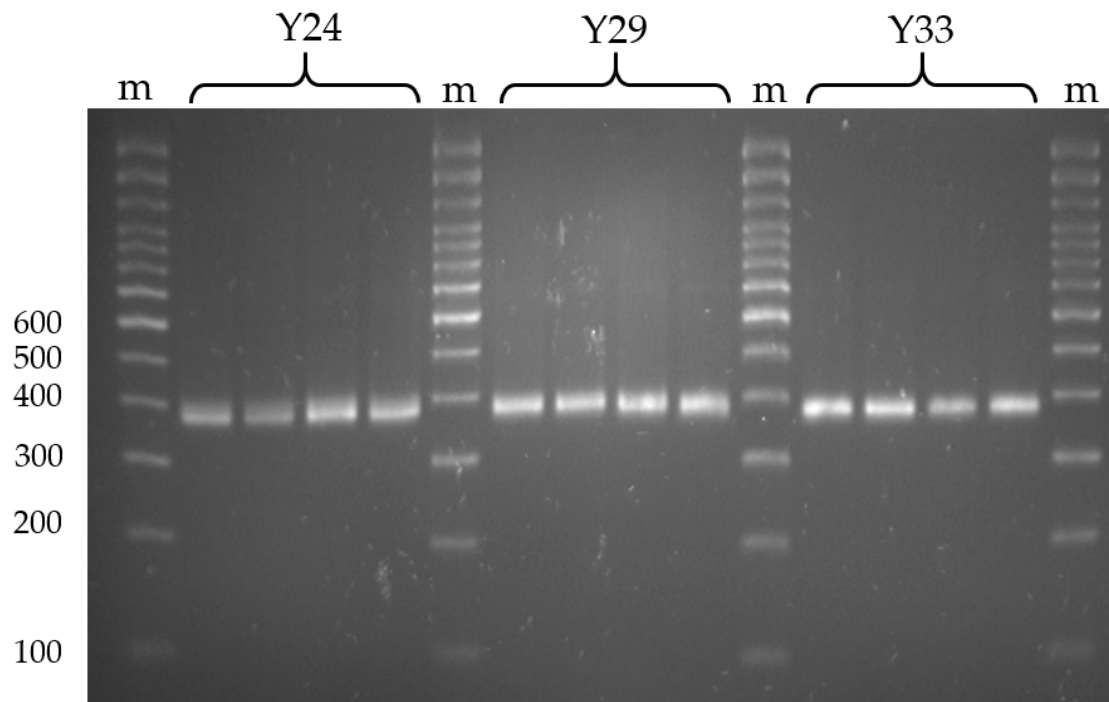


Figure S1. PCR fragment of 5.8S genes (ITS region) of isolated yeasts. Lanes m correspond to 100 bp DNA ladder.