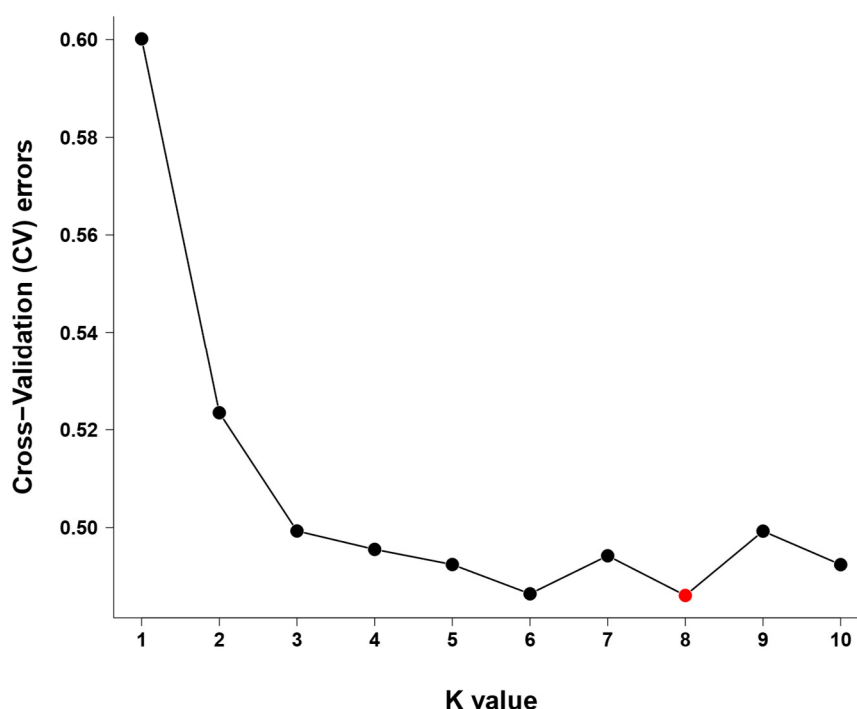


# Supplementary Materials: Host-Species Variation and Environment Influence Endophyte Symbiosis and Mycotoxin Levels in Chinese *Oxytropis* Species

Chenchen Guo, Li Zhang, Qianqian Zhao, Manfred Beckmann, Helen Phillips, Huizhen Meng, Chonghui Mo, Luis A. J. Mur and Wei He



**Figure S1.** CV value of admixture. The first significant decrease in  $\Delta K$  indicates the best explanatory  $K=8$ , suggesting eight genetically distinct populations.

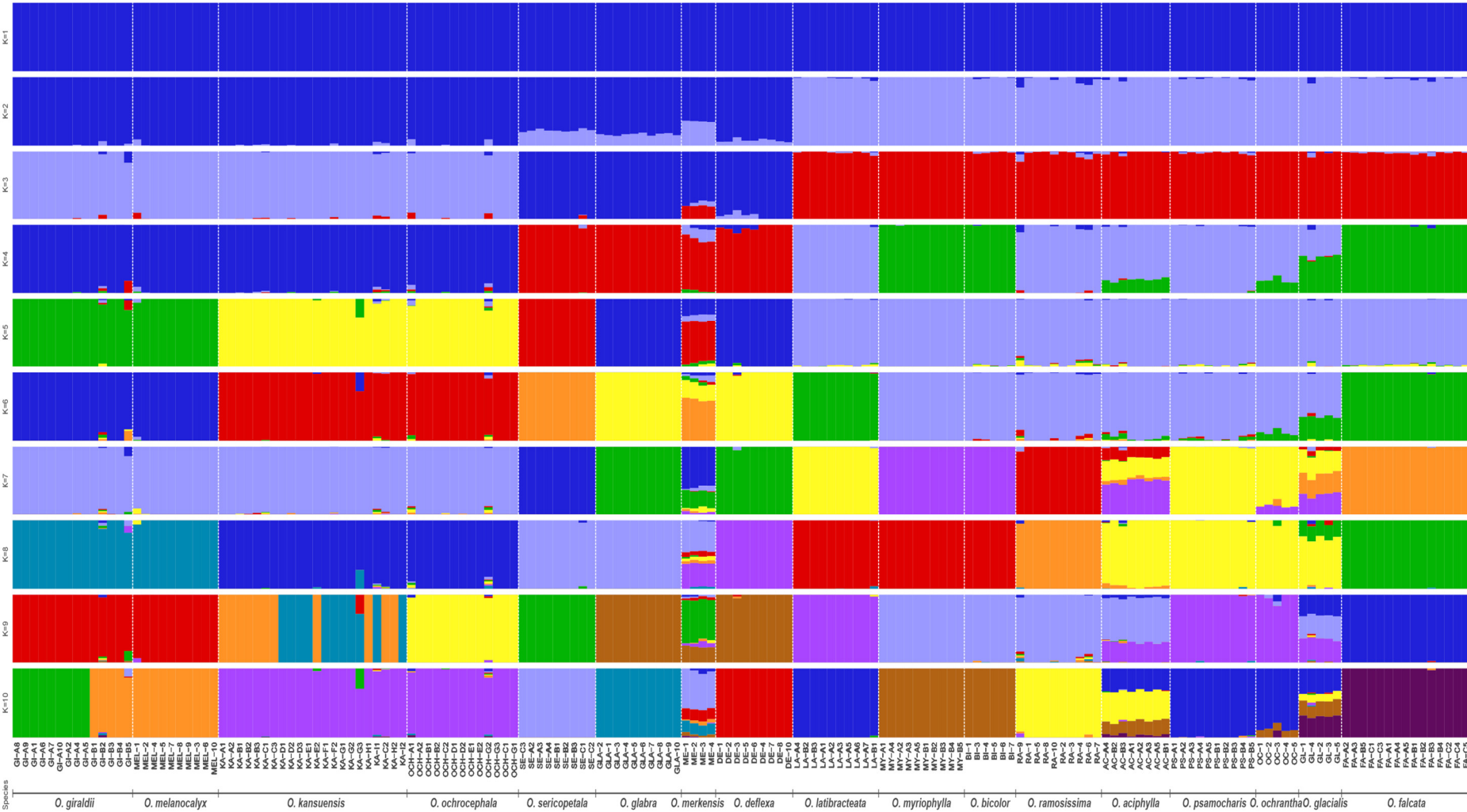
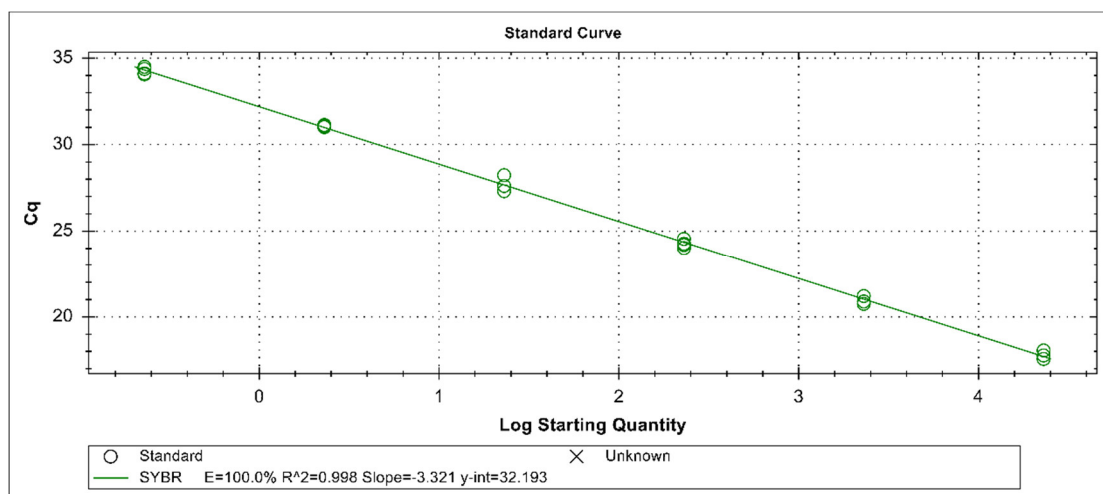
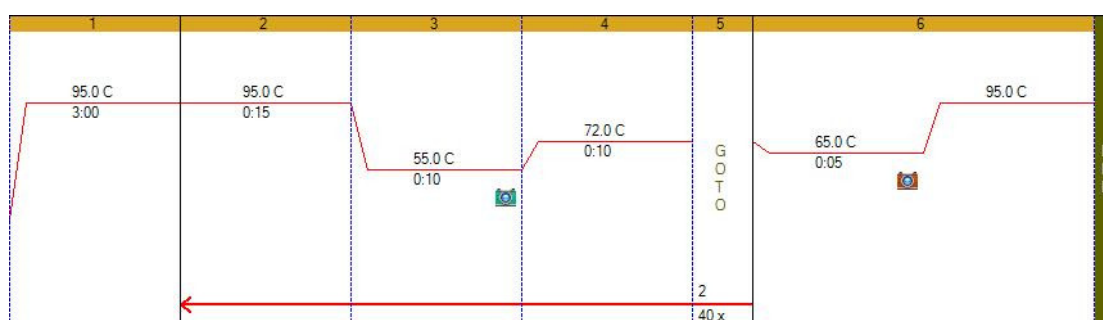


Figure S2. Results of admixture.



**Figure S3.** A standard curve of qPCR reaction.  $y = -3.321x + 32.193$ ,  $R^2=0.998$ ,  $E=100.0\%$ , the range of Cq value is 17.57-34.50. Indicating that there is a good linear relationship within the range of the standard curve dilution mass concentration, and the reaction amplification effect is ideal, and the amplification system is stable.



**Figure S4.** Reaction procedure of qPCR reaction.