

Supplementary Materials: Serum *P*-Cresyl Sulfate Level Is an Independent Marker of Peripheral Arterial Stiffness as Assessed Using Brachial-Ankle Pulse Wave Velocity in Patients with Non-Dialysis Chronic Kidney Disease Stage 3 to 5

Yu-Chi Chang, Yu-Li Lin, Yu-Hsien Lai, Chih-Hsien Wang and Bang-Gee Hsu

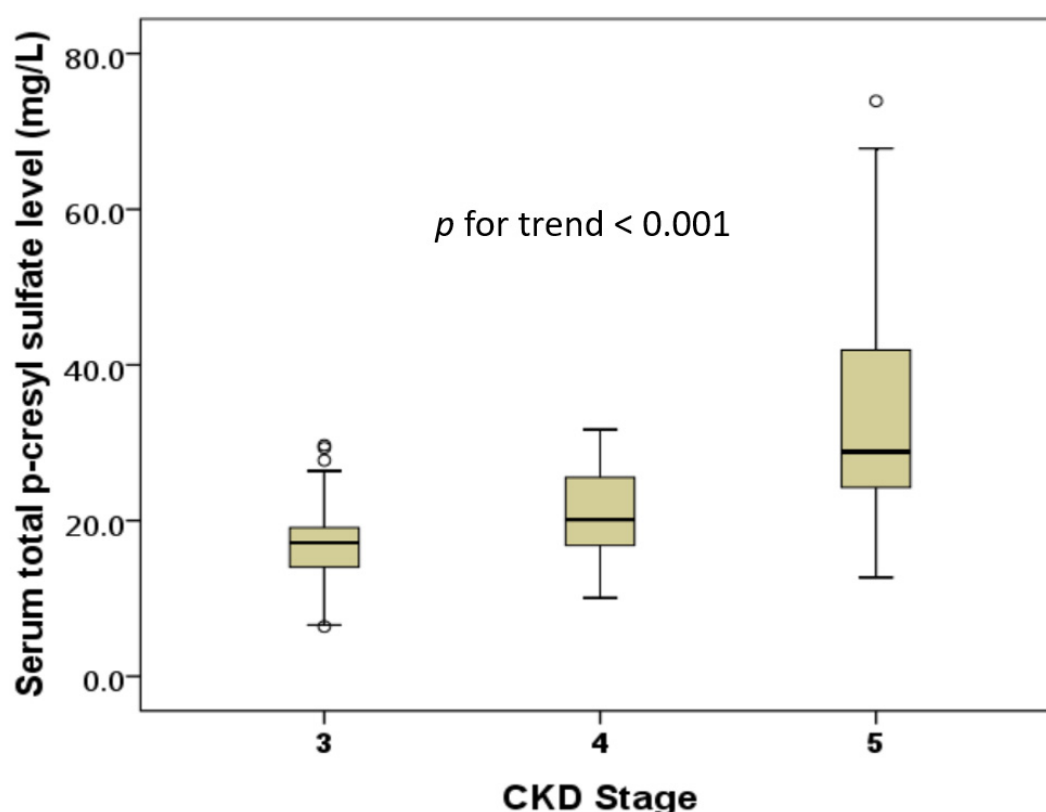


Figure S1. Serum total *p*-Cresyl sulfate levels in different stages of chronic kidney disease in this study.