

**Supplementary Materials:** Occurrence and exposure assessment of major mycotoxins in foodstuffs from Algeria

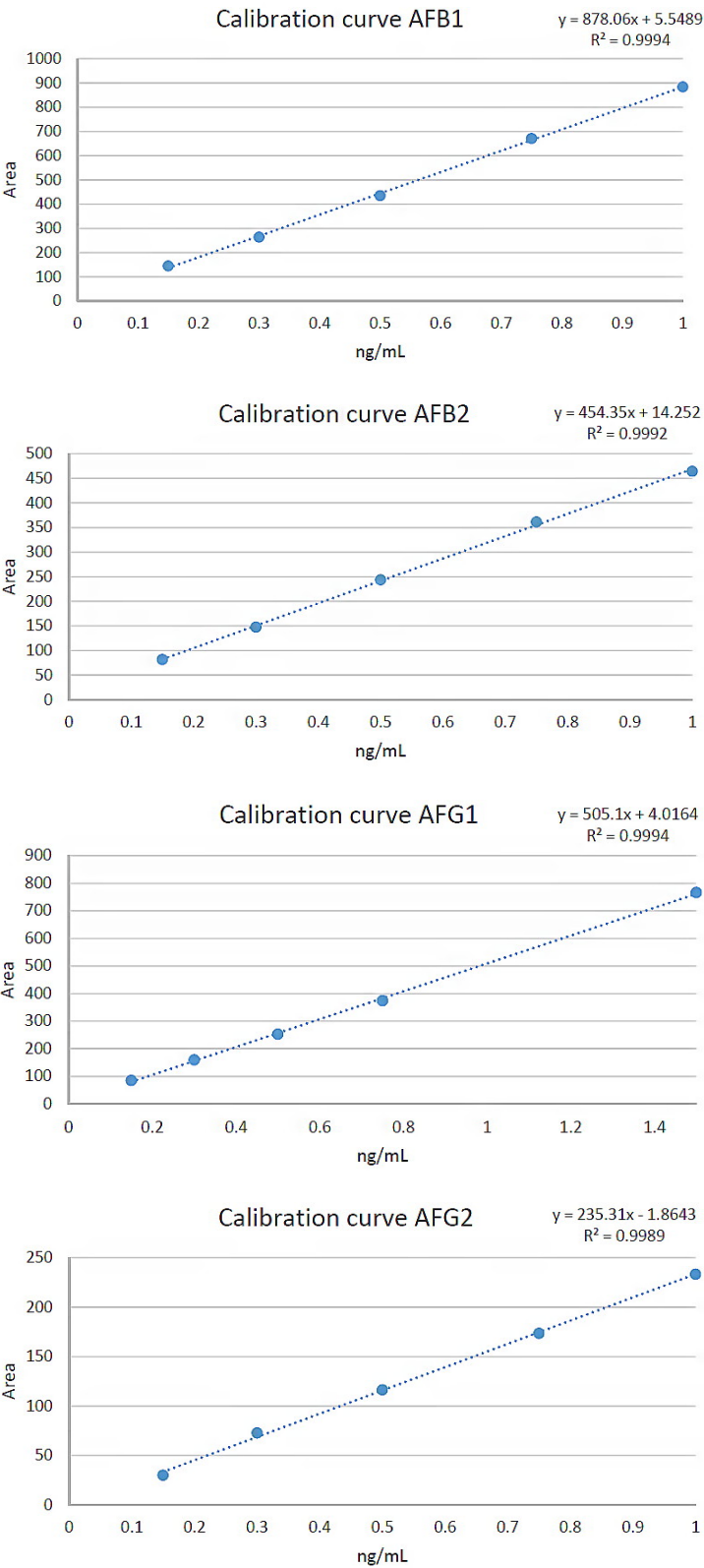
Azem Belasli, Marta Herrera, Agustín Ariño and Djamel Djenane  
*Toxins*

| Aflatoxin B1 |         |
|--------------|---------|
| ng/mL        | Area    |
| 0.15         | 144.832 |
| 0.3          | 263.934 |
| 0.5          | 435.253 |
| 0.75         | 671.099 |
| 1            | 883.400 |

| Aflatoxin B2 |         |
|--------------|---------|
| ng/mL        | Area    |
| 0.15         | 81.799  |
| 0.3          | 147.484 |
| 0.5          | 243.685 |
| 0.75         | 361.154 |
| 1            | 463.876 |

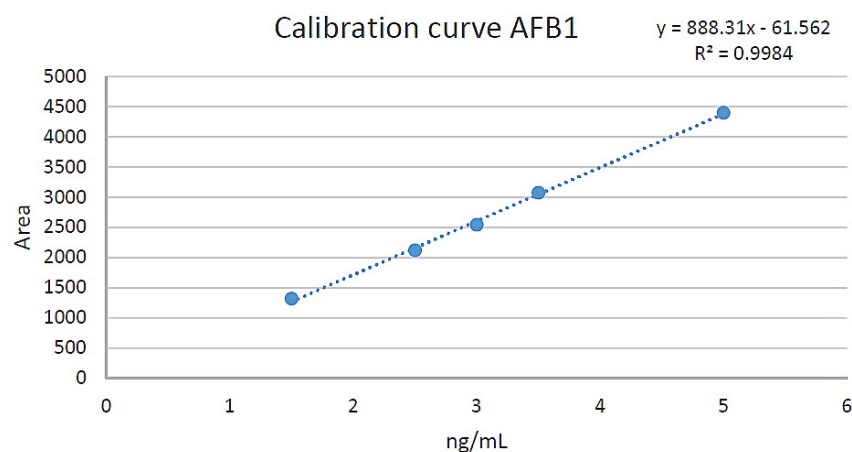
| Aflatoxin G1 |         |
|--------------|---------|
| ng/mL        | Area    |
| 0.15         | 84.742  |
| 0.3          | 159.112 |
| 0.5          | 252.451 |
| 0.75         | 373.698 |
| 1.5          | 766.404 |

| Aflatoxin G2 |         |
|--------------|---------|
| ng/mL        | Area    |
| 0.15         | 30.077  |
| 0.3          | 72.824  |
| 0.5          | 116.332 |
| 0.75         | 173.47  |
| 1            | 233.307 |

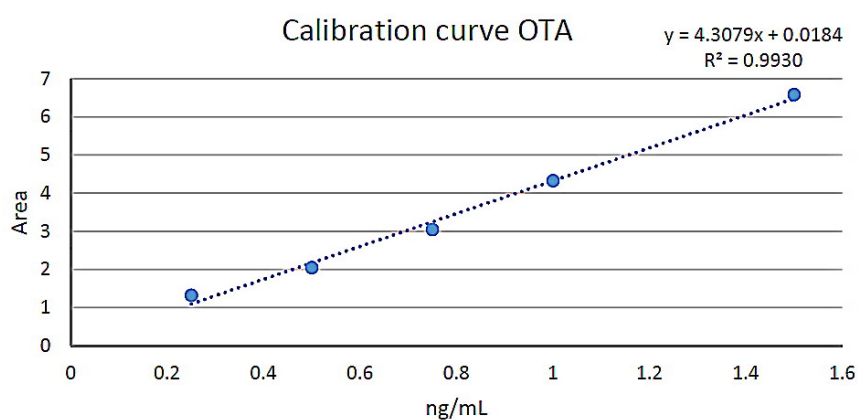


**Figure S1.** Calibration curves for the four aflatoxins (0.15 to 1 ng/mL).

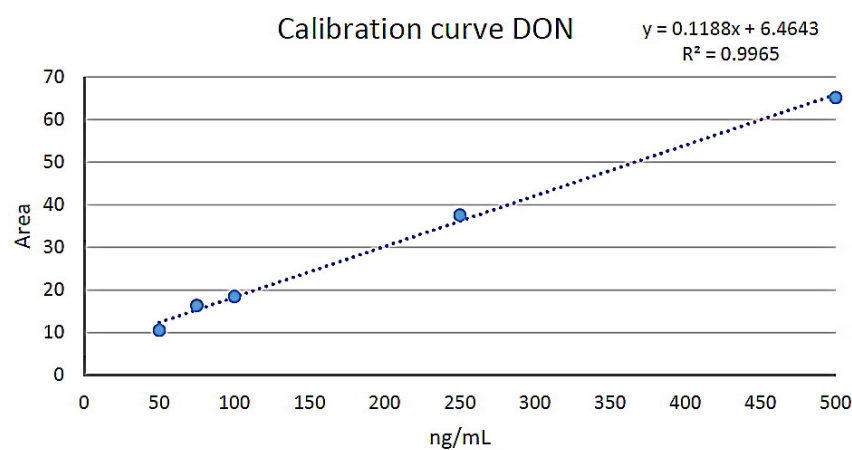
| Aflatoxin B1 |          |
|--------------|----------|
| ng/mL        | Area     |
| 1.5          | 1320.335 |
| 2.5          | 2120.769 |
| 3            | 2543.552 |
| 3.5          | 3076.064 |
| 5            | 4400.330 |



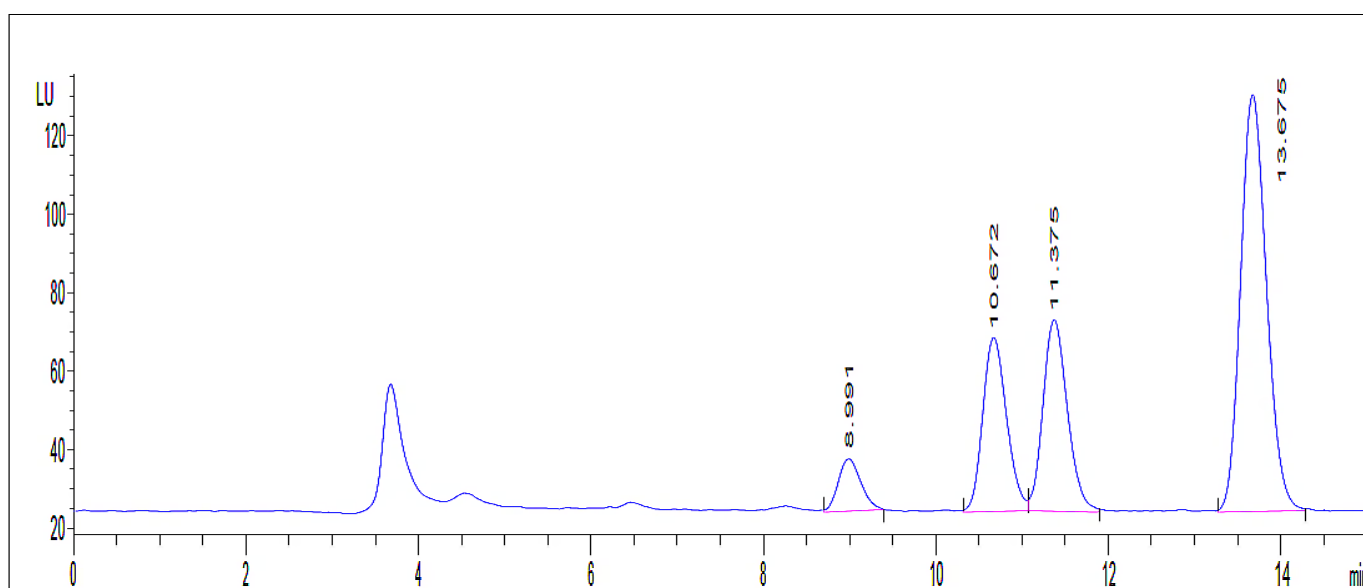
| Ochratoxin A (OTA) |         |
|--------------------|---------|
| ng/mL              | Area    |
| 0.25               | 1.3209  |
| 0.5                | 2.04381 |
| 0.75               | 3.04529 |
| 1                  | 4.3254  |
| 1.5                | 6.588   |



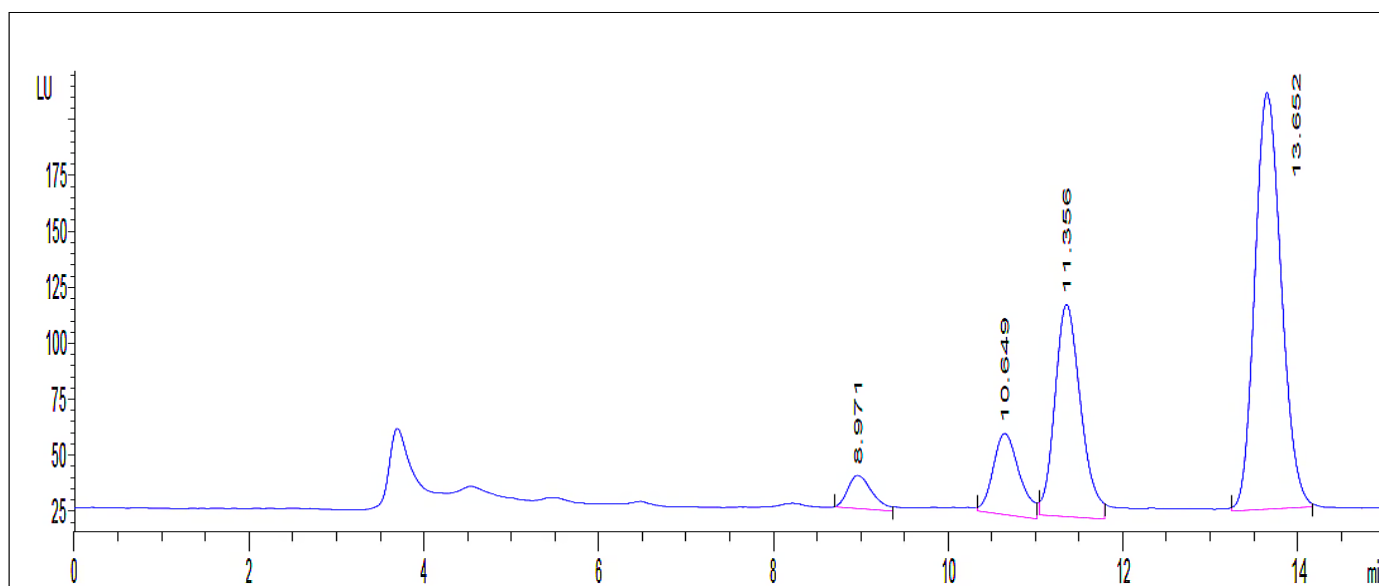
| Deoxynivalenol (DON) |       |
|----------------------|-------|
| ng/mL                | Area  |
| 50                   | 10.56 |
| 75                   | 16.36 |
| 100                  | 18.49 |
| 250                  | 37.6  |
| 500                  | 65.18 |



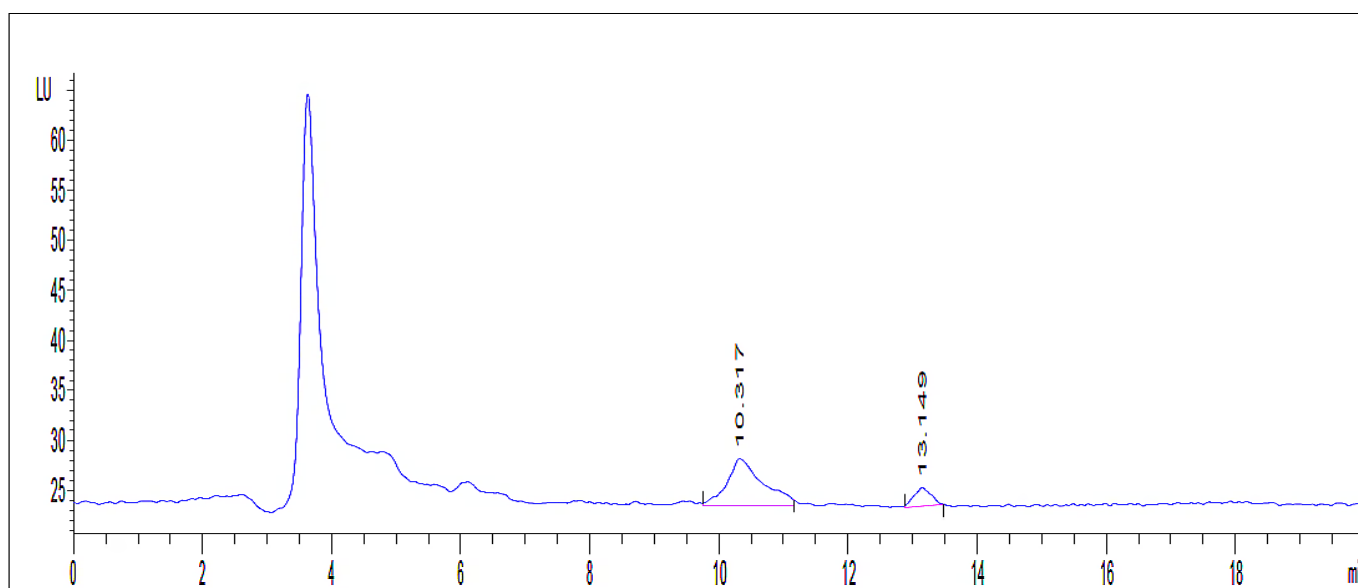
**Figure S2.** Calibration curves for aflatoxin B1 (1.5 to 5 ng/mL), OTA (0.25 to 1.5 ng/mL) and DON (50 to 500 ng/mL).



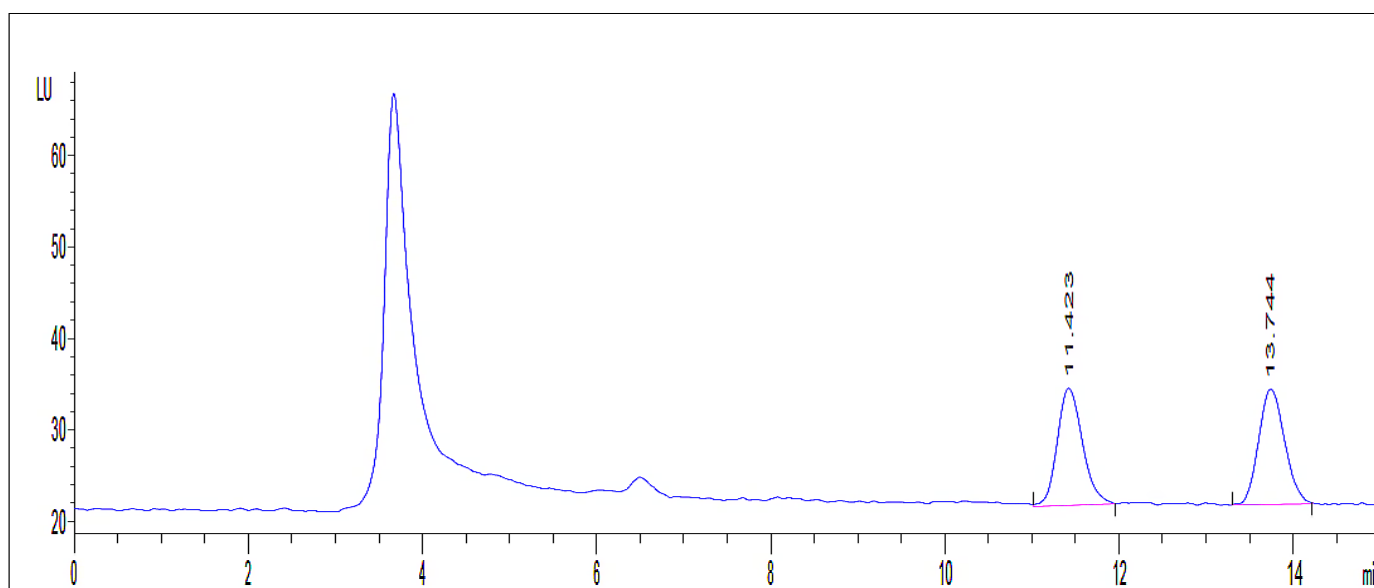
**Figure S3.** LC chromatogram of a peanut sample contaminated with the four aflatoxins.



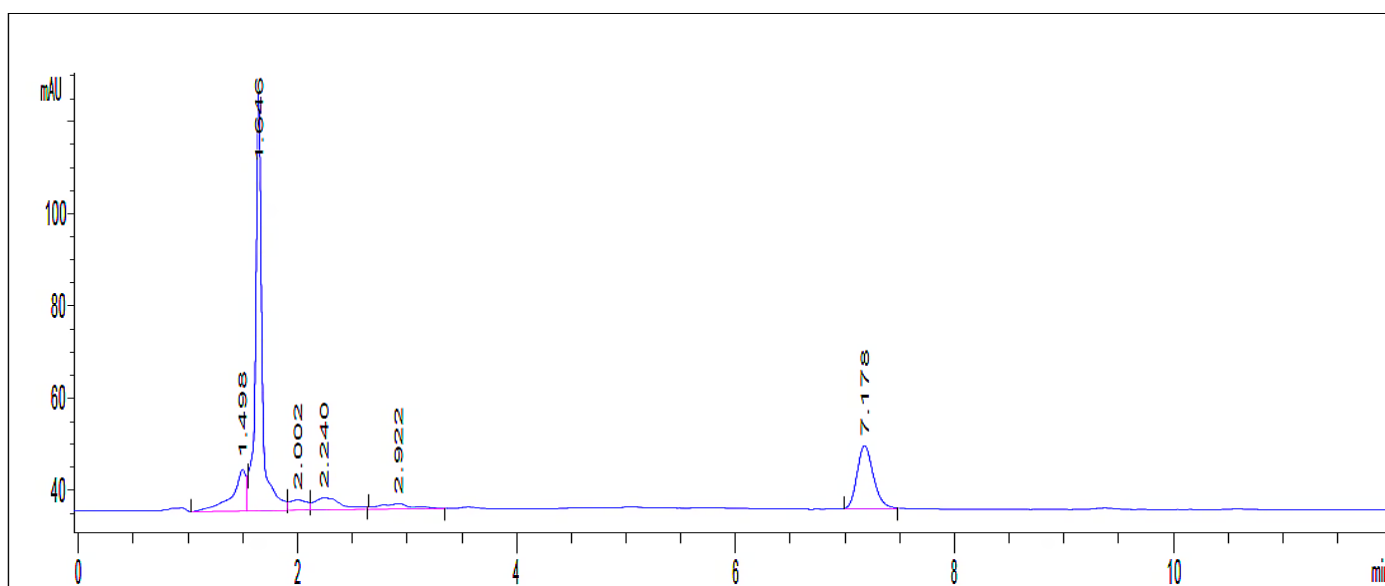
**Figure S4.** LC chromatogram of a peanut sample contaminated with the four aflatoxins.



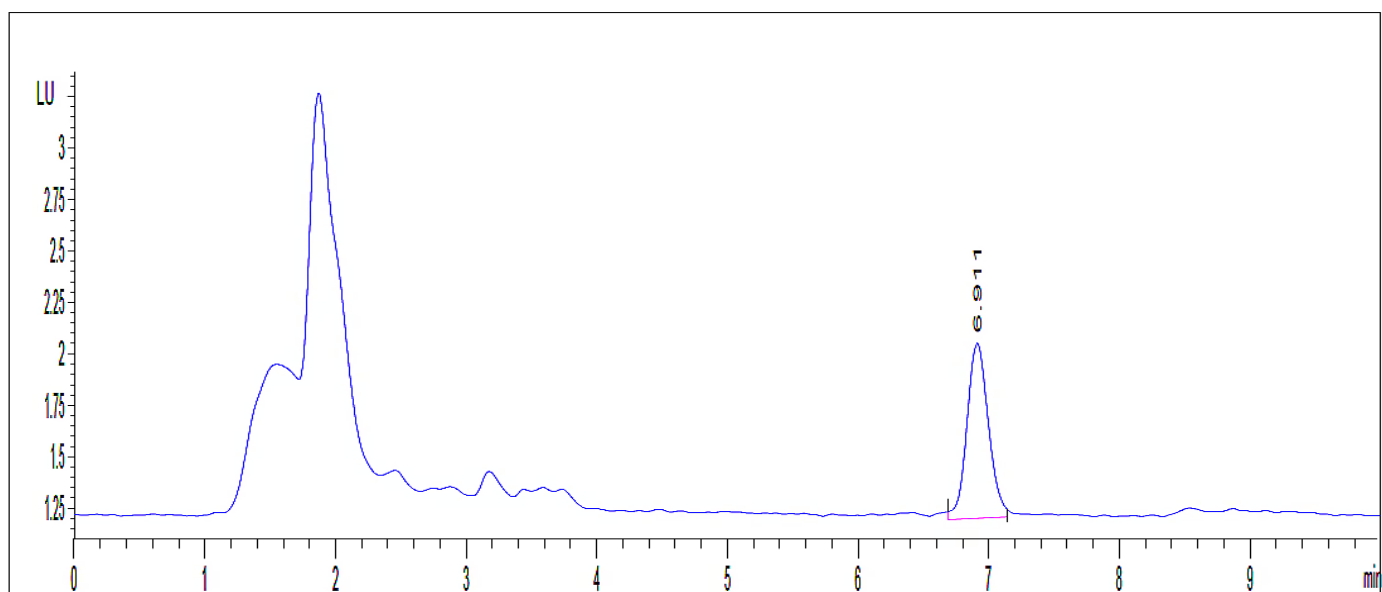
**Figure S5.** LC chromatogram of a fig sample contaminated with aflatoxins G1 and B1.



**Figure S6.** LC chromatogram of a date sample contaminated with aflatoxins B1 and B2.



**Figure S7.** LC chromatogram of a couscous sample contaminated with deoxynivalenol.



**Figure S8.** LC chromatogram of a couscous sample contaminated with ochratoxin A.