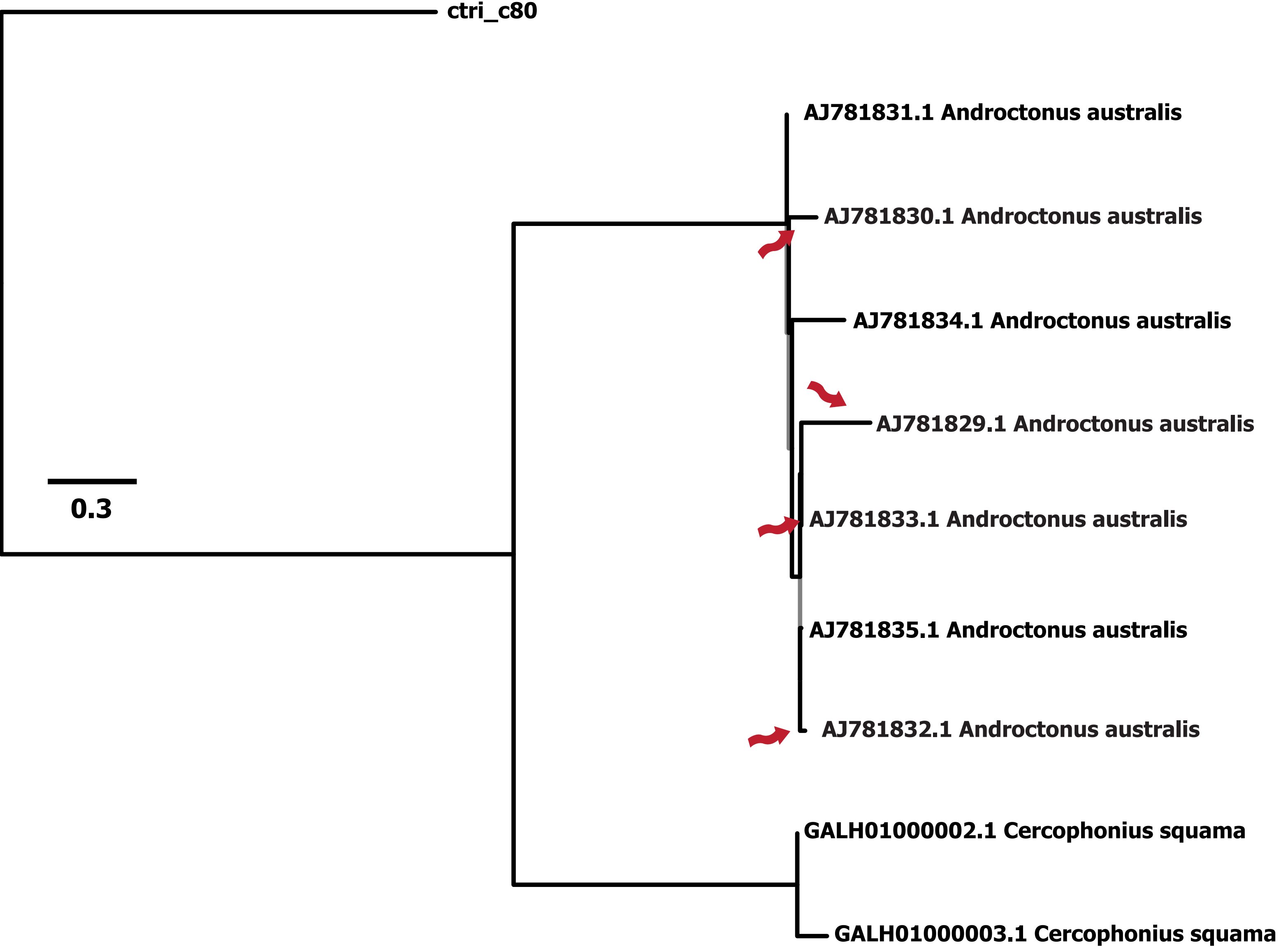


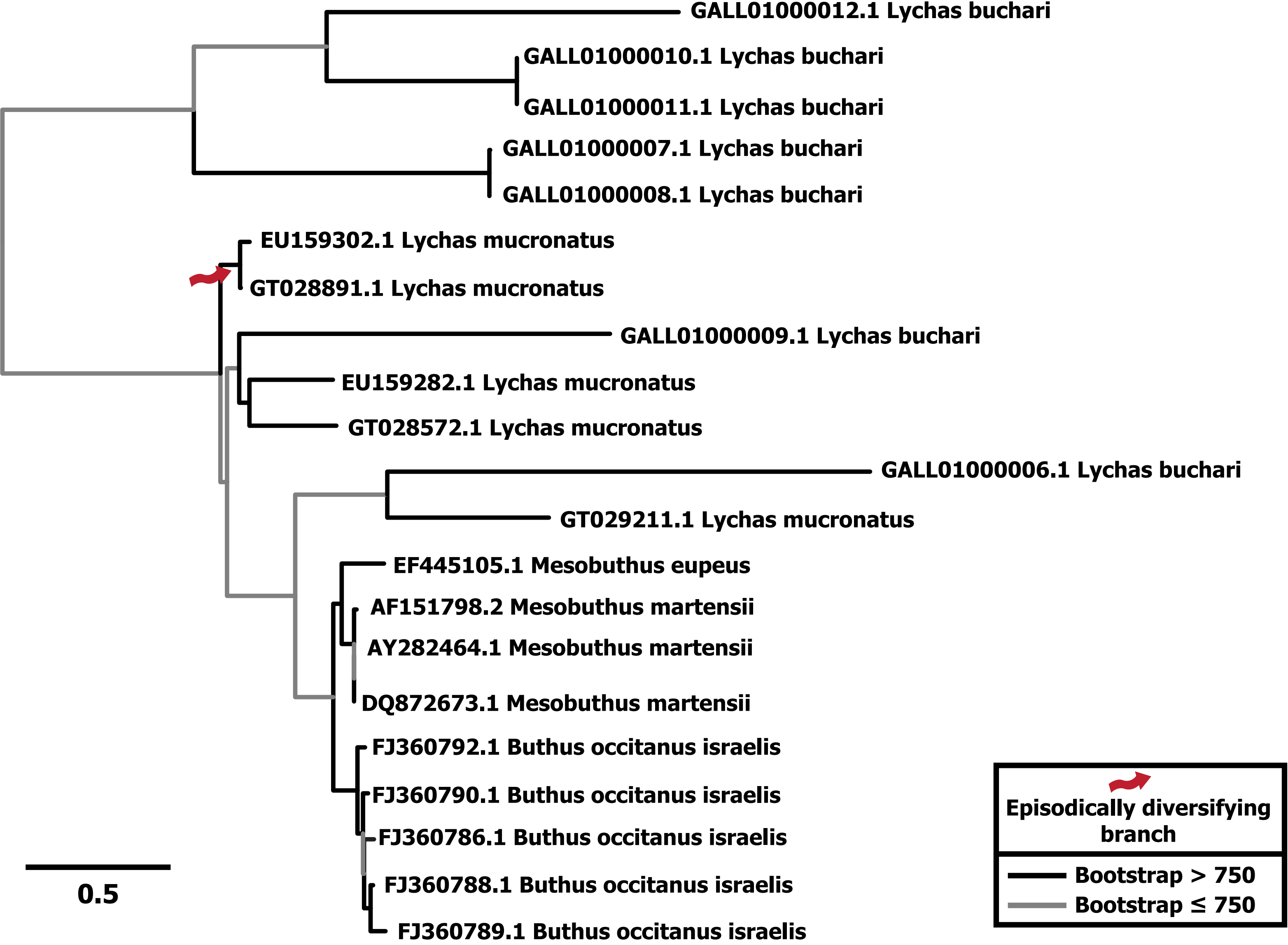
1

Plesiotypic Na_v CS α/β



2

Lipolytic Na_v CS α/β



Note: As a standard practice, all HyPhy analyses are conducted using a dataset of unique sequences only (duplicates were removed). In addition, extremely divergent sequences present in the short KTx dataset were also removed prior to analyses. Full set of nucleotide sequences are available in Supplementary File 1, while all used sequences are shown in branch-site REL supplementary figures.