

Supplementary Materials: Genotypic Regulation of Aflatoxin Accumulation but not *Aspergillus* Fungal Growth upon Post-Harvest Infection of Peanut (*Arachis hypogaea* L.) Seeds

Walid Ahmed Korani, Ye Chu, Corley Holbrook, Josh Clevenger and Peggy Ozias-Akins

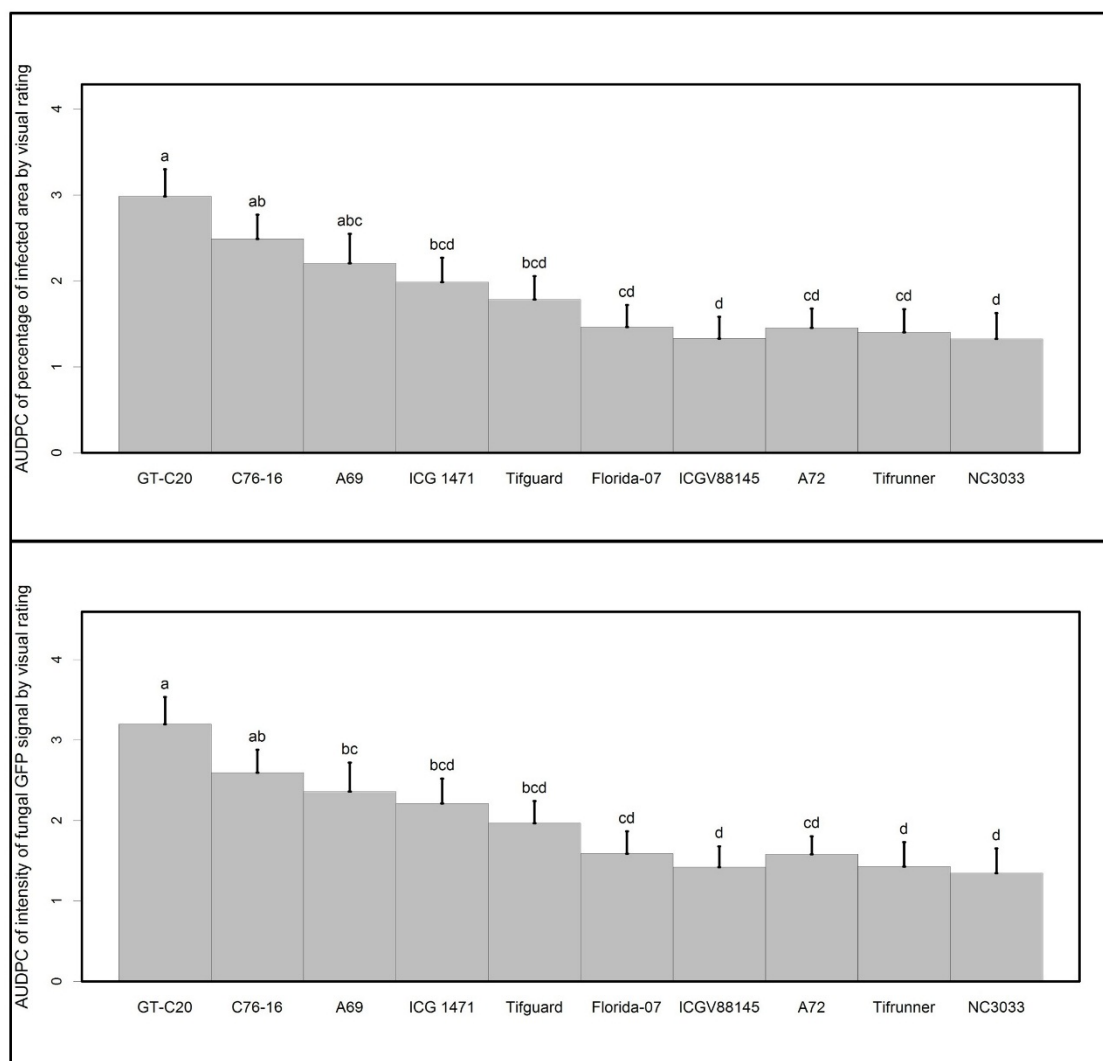


Figure S1: ANOVA analysis of log-transformed AUDPC values of the ten inoculated peanut genotypes. Percentage of infection area (upper panel) and the intensity of the fungal GFP signal (lower panel); Different letters indicate significant differences at $p < 0.05$ level determined by Tukey's range test.