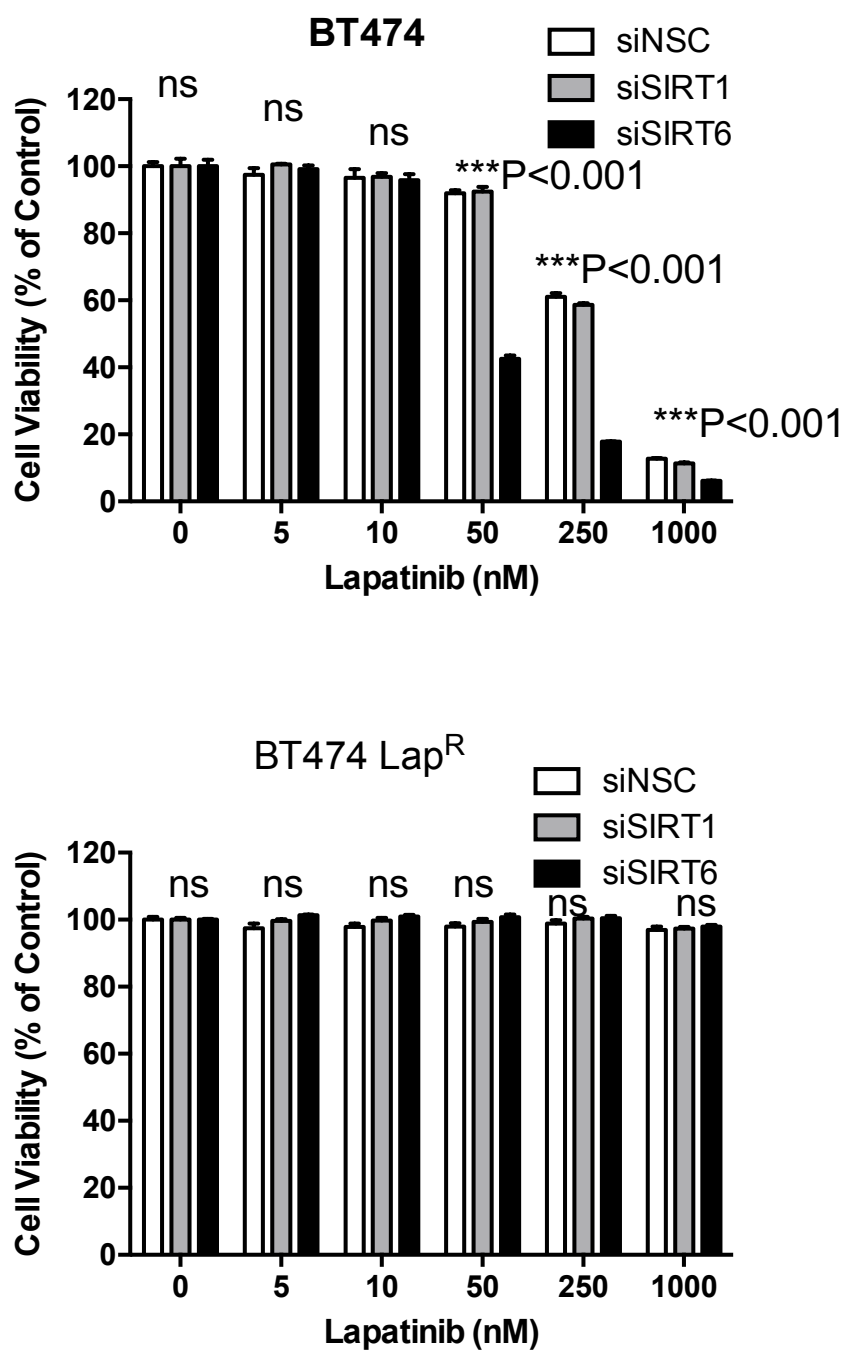


Supplementary Figure S5



**Supplementary figure S5. Silencing of SIRT6 increases lapatinib cytotoxicity in BT474 cells.** Transiently transfected BT474 and BT474 Lap<sup>R</sup> cells were seeded in 96-well plates and treated with lapatinib at a range of concentrations from 10 to 2000 nM. Twenty-four hours after treatment, cells were fixed and stained with the protein-binding dye SRB. Values obtained were normalized against the corresponding untreated controls (100%) and presented as percentages. Data represent means  $\pm$  SEM (1-way ANOVA; non-significant, ns; significant, \*\*\*P<0.001), showing that BT474 becomes lapatinib sensitive at a range of concentrations from 50 to 2000 after SIRT6 depletion.