

Supplementary materials

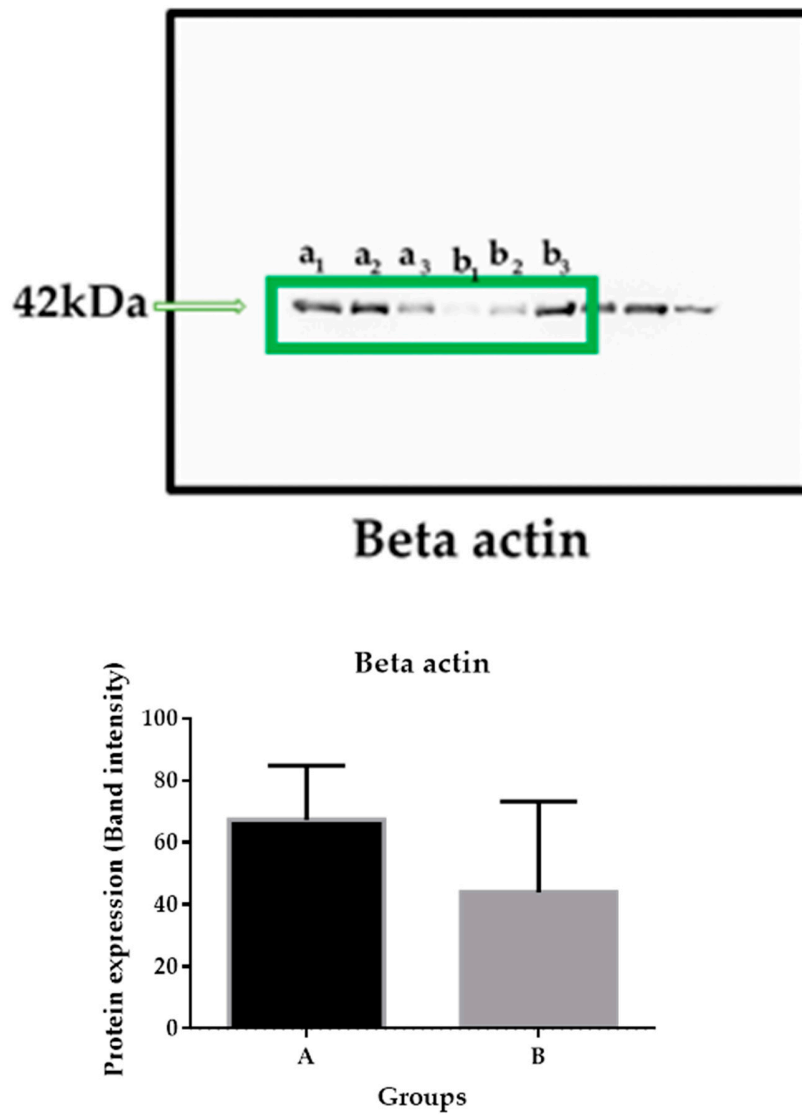


Figure S1. Western blot for the analyses of the expression level of beta actin protein in the spleen of male ICR-mice injected with 80 mg/kg ENU (*n*-ethyl-*n*-nitrosourea). Key: a_1 - a_3 = samples from control group treated with normal saline, b_1 - b_3 = samples from group B treated with 80 mg/kg ENU.

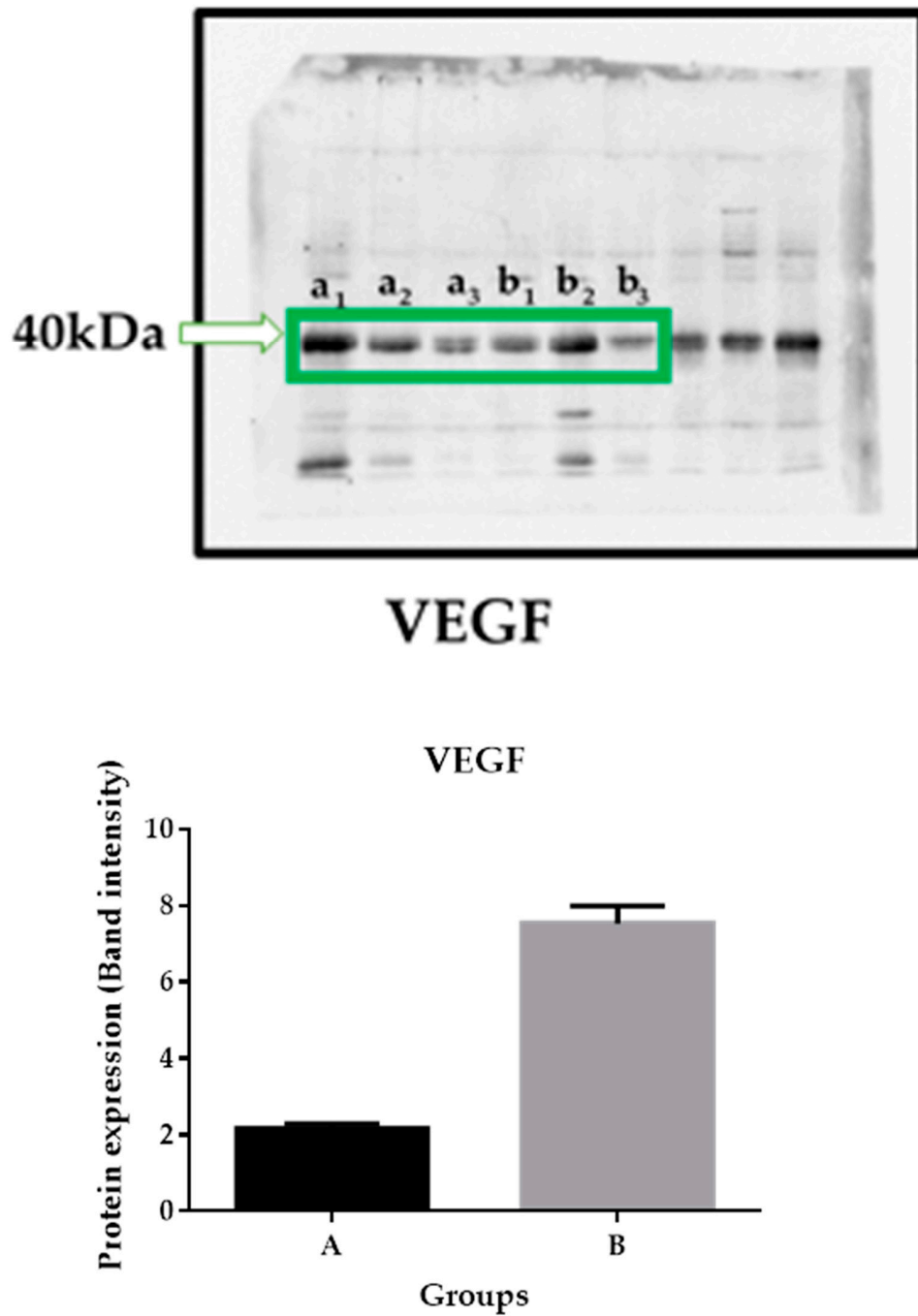


Figure S2. Western blot for the analyses of the expression level of VEGF protein in the spleen of male ICR-mice injected with 80 mg/kg ENU (*n*-ethyl-*n*-nitrosourea). Key: a₁-a₃ = samples from control group treated with normal saline, b₁-b₃ = samples from group B treated with 80 mg/kg ENU.

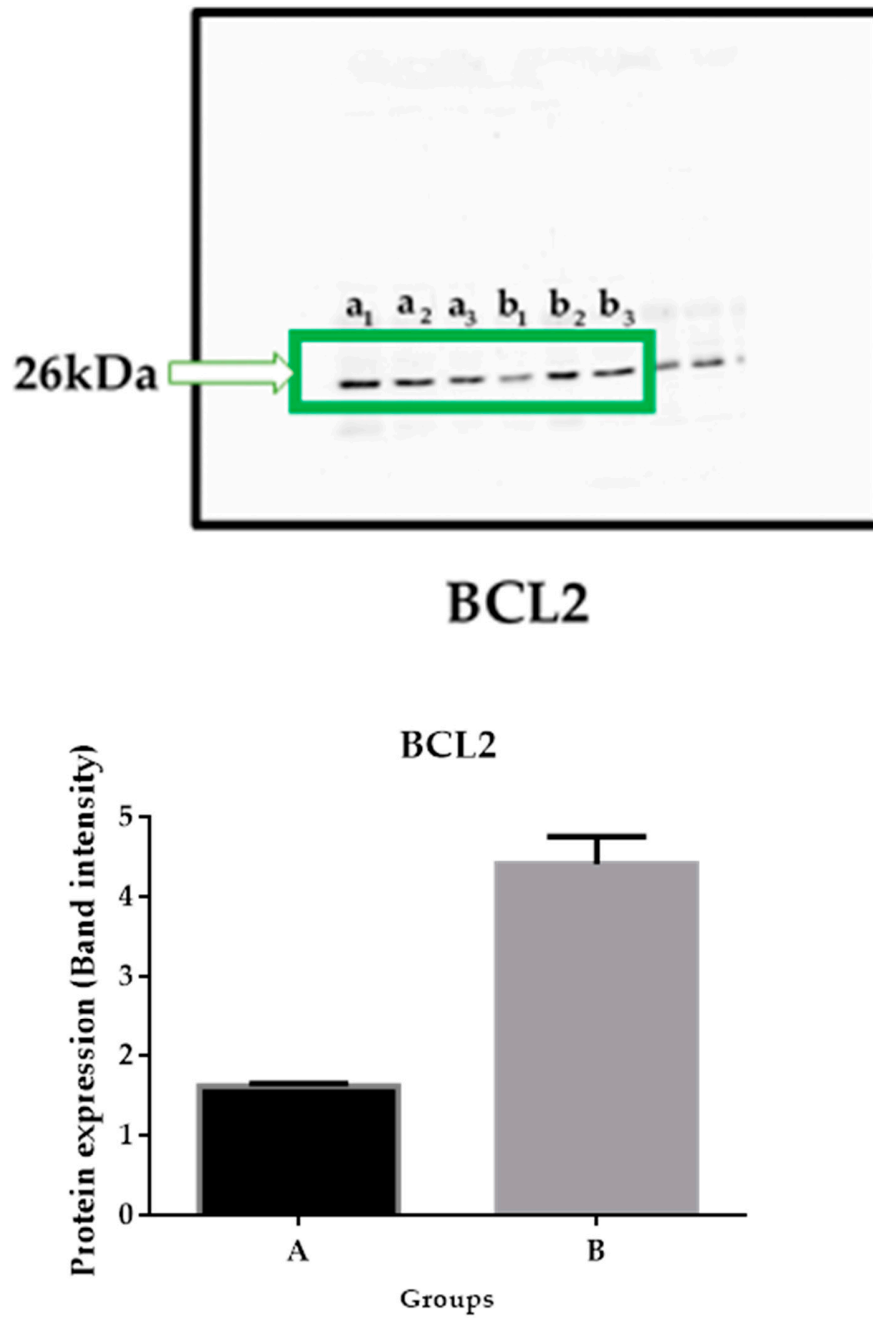
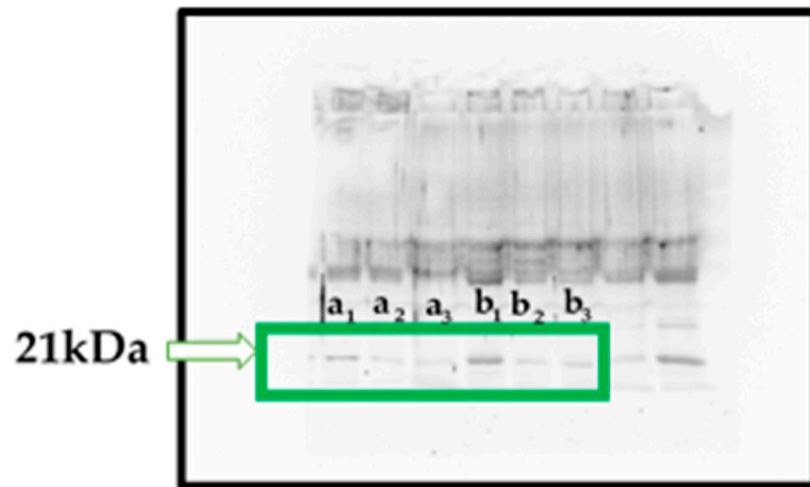


Figure S3: Western blot for the analyses of the expression level of BCL2 protein in the spleen of male ICR-mice injected with 80 mg/kg ENU(*n*-ethyl-*n*-nitrosourea). Key: a_1 - a_3 = samples from control group treated with normal saline, b_1 - b_3 = samples from group B treated with 80 mg/kg ENU.



BAX

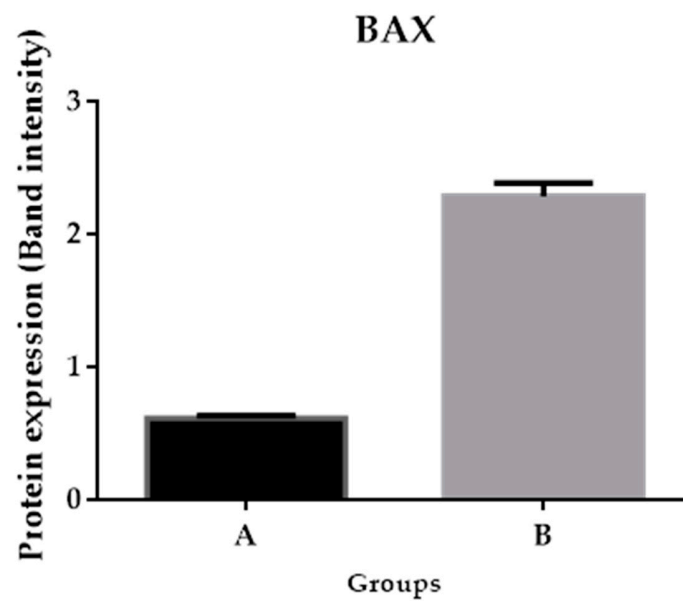


Figure S4: Western blot for the analyses of the expression level of BAX protein in the spleen of male ICR-mice injected with 80 mg/kg ENU (*n*-ethyl-*n*-nitrosourea). Key: a_1 - a_3 = samples from control group treated with normal saline, b_1 - b_3 = samples from group B treated with 80 mg/kg ENU.