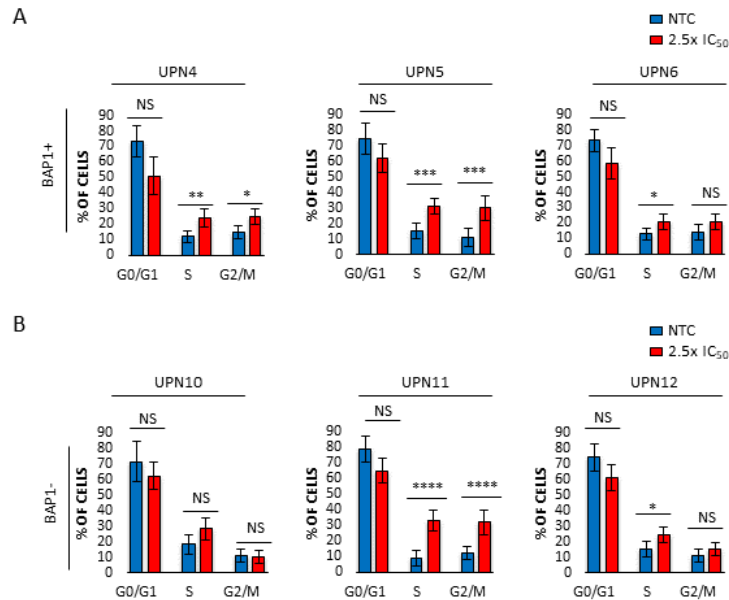


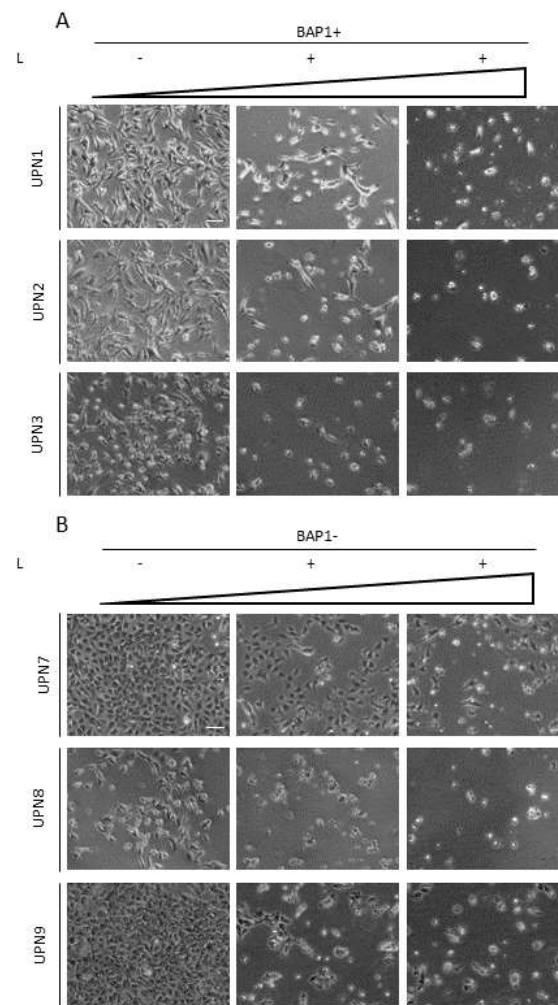
Evaluation of the preclinical efficacy of lurbinectedin in malignant pleural mesothelioma

Supplementary Figure S1



Supplementary Figure S1. Lurbinectedin effects on cell cycle distribution. **(A,B)** Histograms showing cell number percentage in each cell cycle phase (G0/G1, S and G2/M) of the indicated MPM cell lines, treated or not with lurbinectedin (2.5-fold the IC₅₀) for 24h. Data are expressed as means \pm SEM; ^{NS}P>0.05; * p < 0.05; ** p < 0.01; *** p < 0.001; **** p < 0.0001

Supplementary Figure S2



Supplementary Figure S2. Lurbinedin strongly impairs cell viability in MPM cell lines. (A,B) Representative microscopic images of the indicated MPM cell lines treated or not with two different lurbinedin (L) concentrations (2.5-fold and 5-fold the IC_{50}) for 72h (scale bar = 100 μ m).

Table S1. Histological features of the original tumors, clinical features and treatments subsequently received of the corresponding patients

UPN	Histotype	BAP1	Gender	Age	Asbestos exposure	Surgery	First-line treatment	Second-line treatment	OS (months)
1	epithelioid	POS	M	78	Possible	No	Palliative	No	6
2	epithelioid	POS	M	69	Yes	Yes*	No	No	12
3	epithelioid	POS	M	70	Yes	Yes*	No	No	3
4	epithelioid	POS	M	79	Possible	No	Carbo+Pem	Gem	16
5	epithelioid	POS	M	68	Yes	No	Carbo+Pem	Pem	9
6	sarcomatoid	POS	M	69	Yes	No	Carbo+Pem	Trabectedin	10
7	sarcomatoid	NEG	M	77	Yes	No	No	No	3
8	epithelioid	NEG	M	53	Yes	Yes	No	No	13
9	epithelioid	NEG	M	74	NR	No	Carbo+Pem	No	13
10	epithelioid	NEG	F	46	Yes	No	Carbo+Pem	Trabectedin	12
11	biphasic	NEG	M	60	Yes	No	Carbo+Pem	Gem+Vin	23
12	sarcomatoid	NEG	F	80	Yes	No	Carbo+Pem	Trabectedin	5

POS: positive; NEG: negative; M: male; F: female; NR: not reported; Yes*: Surgery + adjuvant platinum-based chemotherapy; n.a.: not available; Carbo: carboplatin; Pem: pemetrexed; Gem: gemcitabine; Vin: vinorelbine; OS: overall survival.