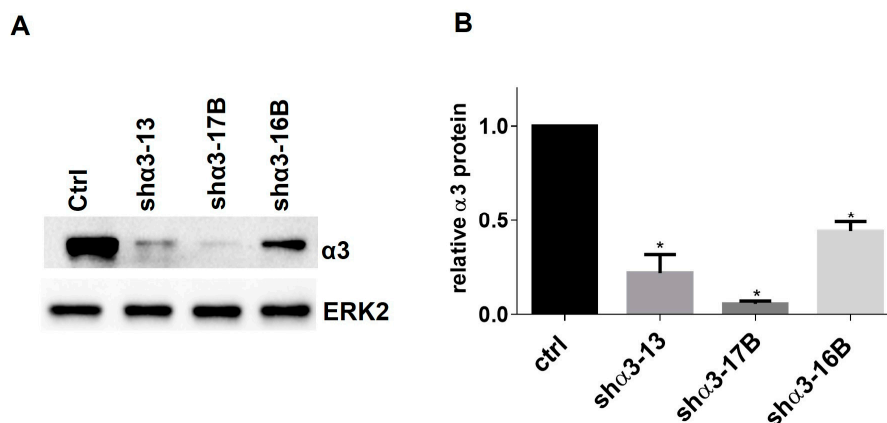
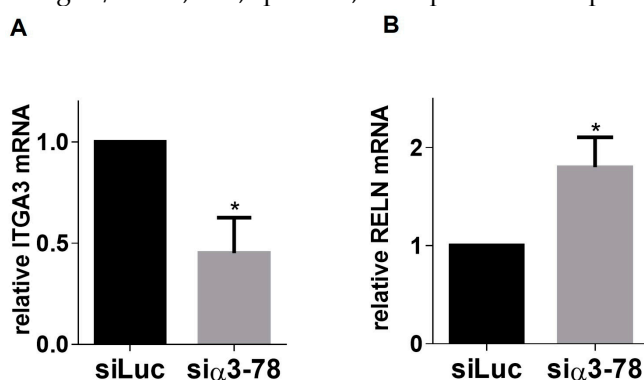


# Integrin $\alpha 3 \beta 1$ Represses Reelin Expression in Breast Cancer Cells to Promote Invasion

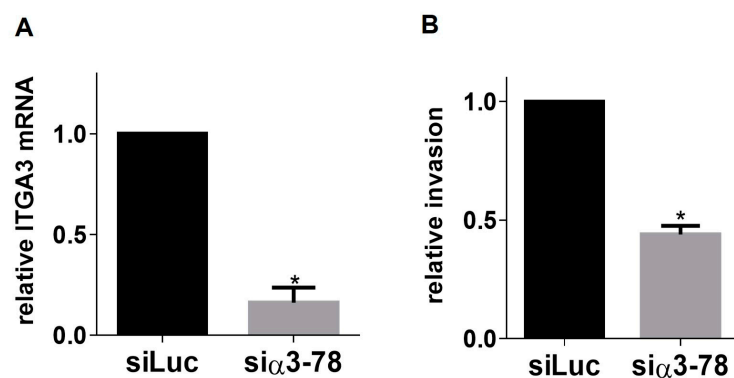
Abibatou Ndoeye, Rakshitha Pandulal Miskin and C. Michael DiPersio



**Figure S1.** Measurement of  $\alpha 3$  protein in  $\alpha 3$ -expressing and  $\alpha 3$ -deficient MDA-MB-231 cells. **A.** Representative western blot (non-reducing) of  $\alpha 3$  in MDA-MB-231 cells transduced with control shRNA (ctrl) or three distinct  $\alpha 3$ -targeting shRNAs (sh $\alpha 3$ -13, sh $\alpha 3$ -17B, sh $\alpha 3$ -16B); control, ERK2. **B.** Graph shows the quantification of  $\alpha 3$  protein; data normalized to ERK protein levels. Data are average  $\pm$  SEM,  $n=3$ ; \* $p \leq 0.05$ ; multiple t-test comparison with Sidak-Bonferroni correction.



**Figure S2.** Measurement of RELN mRNA in SUM159 cells upon siRNA-mediated knockdown of ITGA3. **A, B.** qRT-PCR was performed to compare ITGA3 mRNA (A) or RELN mRNA (B) in SUM159 cells transfected with control siRNA (siLuc) or siRNA that targets  $\alpha 3$  mRNA (si $\alpha 3$ -78). Data are average  $\pm$  SEM,  $n=3$ ; \* $p \leq 0.05$ , unpaired t-test.



**Figure S3.** Invasion of MDA-MB-231 cells is reduced upon siRNA-mediated knockdown of ITGA3. **A.** qRT-PCR was performed to compare ITGA3 mRNA in MDA-MB-231 cells transfected with control siRNA (siLuc) or  $\alpha$ 3-targeting siRNA (si $\alpha$ 3 -78). **B.** Invasive potential of MDA-MB-231 cells transfected with siLuc or si $\alpha$ 3-78 cells was compared using Matrigel invasion assays. Graph shows relative cell invasion. Data are average  $\pm$  SEM,  $n=3$ ; \* $p \leq 0.05$ , unpaired t-test.