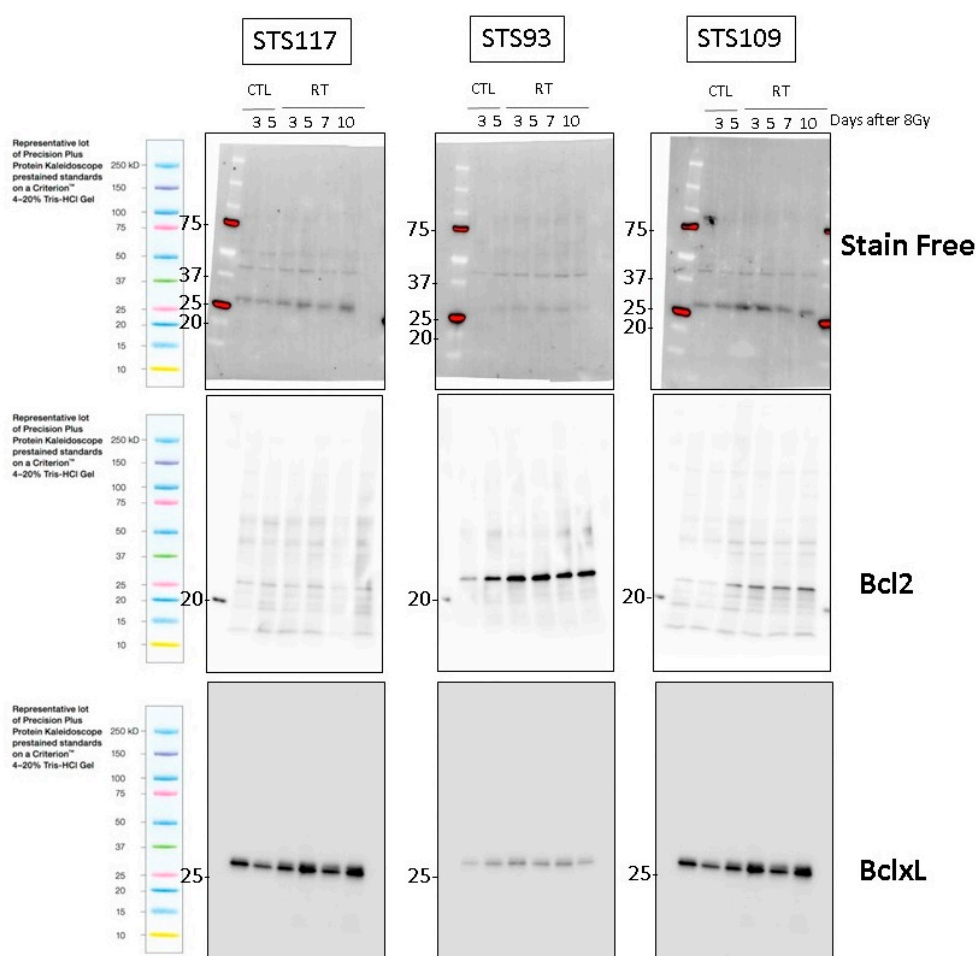


Supplementary Materials: Senolytic Targeting of Bcl-2 Anti-Apoptotic Family Increases Cell Death in Irradiated Sarcoma Cells

Julie Lafontaine, Guillaume B. Cardin, Nicolas Malaquin, Jean-Sébastien Boisvert, Francis Rodier and Philip Wong



Citation: Lafontaine, J.; Cardin, G.B.; Malaquin, N.; Boisvert, J.-S.; Rodier, F.; Wong, P. Senolytic Targeting of Bcl-2 Anti-Apoptotic Family Increases Cell Death in Irradiated Sarcoma Cells. *Cancers* **2021**, *13*, 386. <https://doi.org/10.3390/cancers13030386>

Received: 10 December 2020

Accepted: 18 January 2021

Published: 21 January 2021

Publisher's Note: MDPI stays neutral with regard to jurisdictional claims in published maps and institutional affiliations.



Copyright: © 2021 by the authors. Submitted for possible open access publication under the terms and conditions of the Creative Commons Attribution (CC BY) license (<http://creativecommons.org/licenses/by/4.0/>).

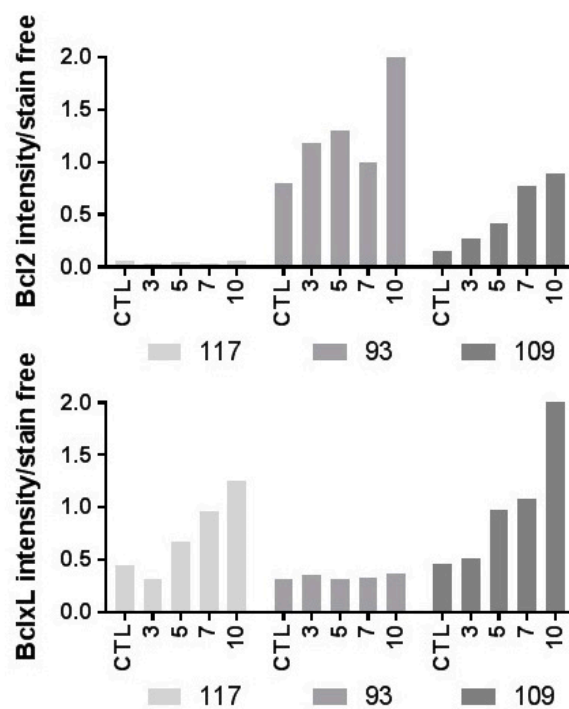


Figure 1. Western blot and densitometry analysis of BCL2 and BCL-XL. STS cells were treated with RT (8Gy) and protein level was measured over days. Original image of western blots and stain free membranes. Intensity ratio represent intensity of protein band normalized to the corresponding stain free value. In graph, CTL is the mean of the ratio from day 3 and 5.