

Table S1. Treatment parameters of TARE

Variable	Patients N=149
SIR-spheres treatment target	
Whole liver	38 (25.5)
Rt. lobe	84 (56.4)
Lt. lobe	8 (5.4)
Segment(s)	19 (12.8)
Whole liver volume (mL)	1604.1 ± 600.2
Targeted liver volume (mL)	1097.3 ± 571.9
Targeted tumor volume (mL)	348.7 ± 418.4
Tumor burden (%)	18.1 ± 16.3
Delivered activity (GBq)	1.98 ± 0.89
Tumor dose (Gy)	235 ± 195
Length of hospital stay	
Minor hospitalization (<48 h)	24 (16.1)
Major hospitalization (>48 h)	125 (83.9)

Values are expressed as mean ± SD or n (%).

TARE, transarterial radioembolization.

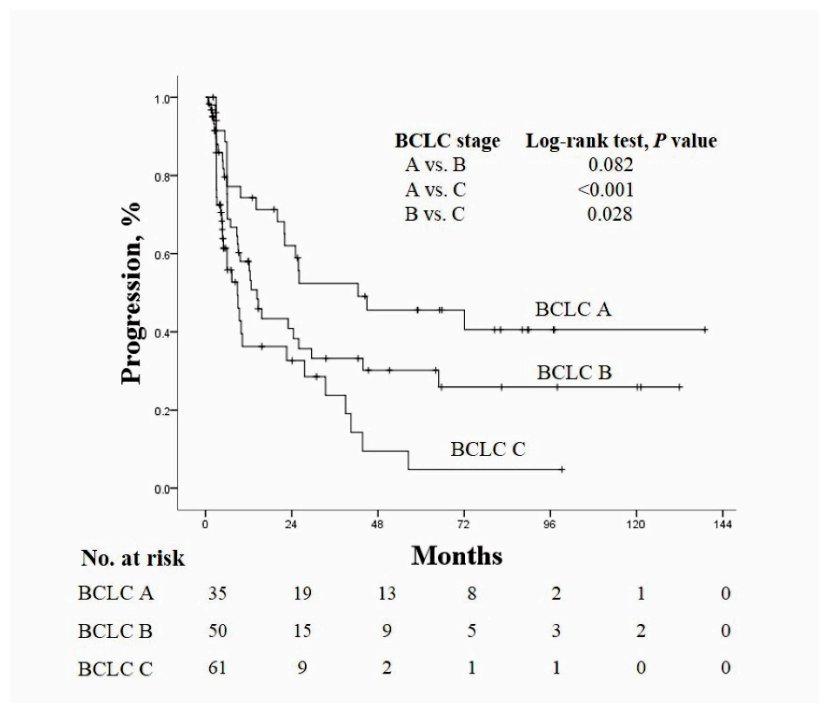


Figure S1. The Kaplan-Meier curves of progression according to BCLC stages

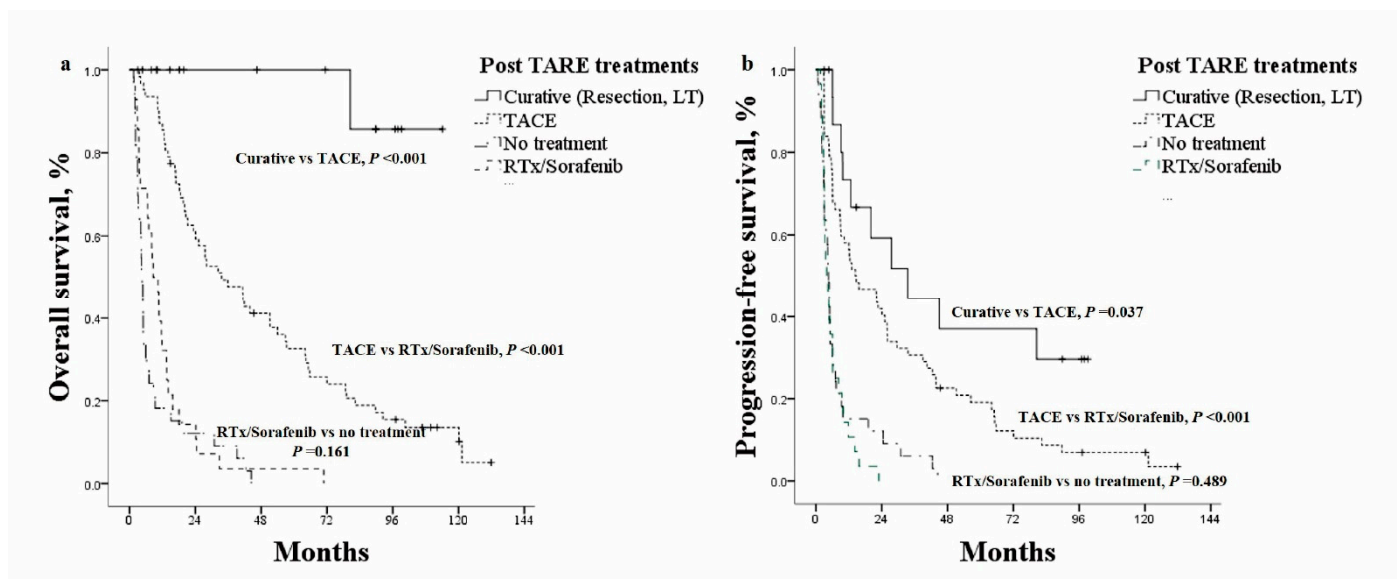


Figure S2. The Kaplan-Meier curves of (a) overall survival and (b) progression free survival according to different treatment modalities following TARE treatment