

Supplementary File S1

Original Western blot film exposures

Manuscript title:

Pro-inflammatory cytokines trigger the overexpression of tumour-related splice variant RAC1B in polarized colorectal cells

Joana F. S. Pereira^{1,2}, Cláudia Bessa^{1,2}, Paulo Matos^{1,2}, Peter Jordan^{1,2}

¹Department of Human Genetics, National Health Institute Dr. Ricardo Jorge, Lisbon, Portugal; ²BiolSI – Biosystems & Integrative Sciences Institute, Faculty of Sciences, University of Lisbon, Lisbon, Portugal

we show **box-marked in red color the areas selected from the original images that were used to assemble the final figure, also indicating the antibody used for staining (the corresponding final Figure is shown again on the right hand of each page)**

Figure 1C

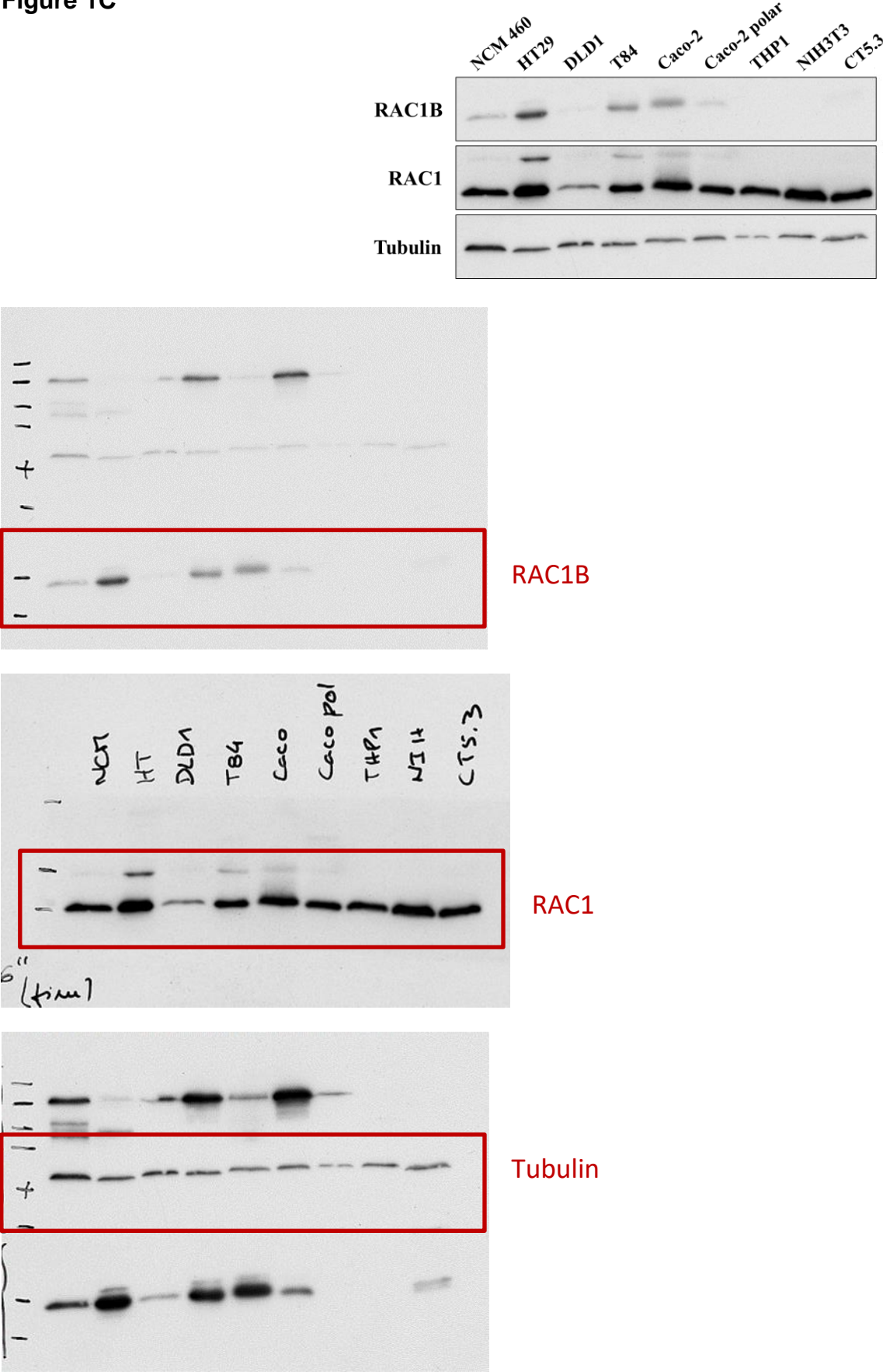


Figure 3A

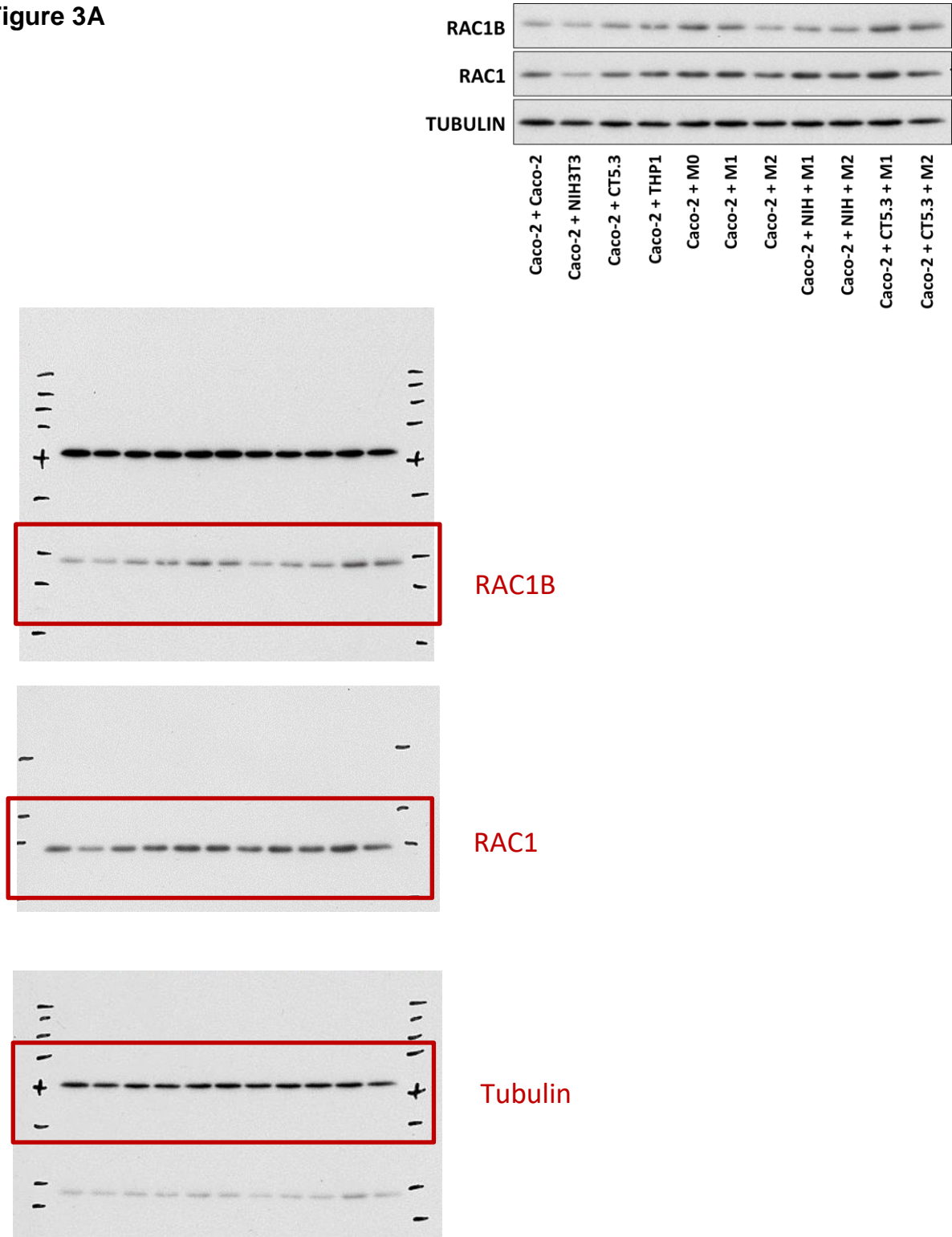


Figure 4A

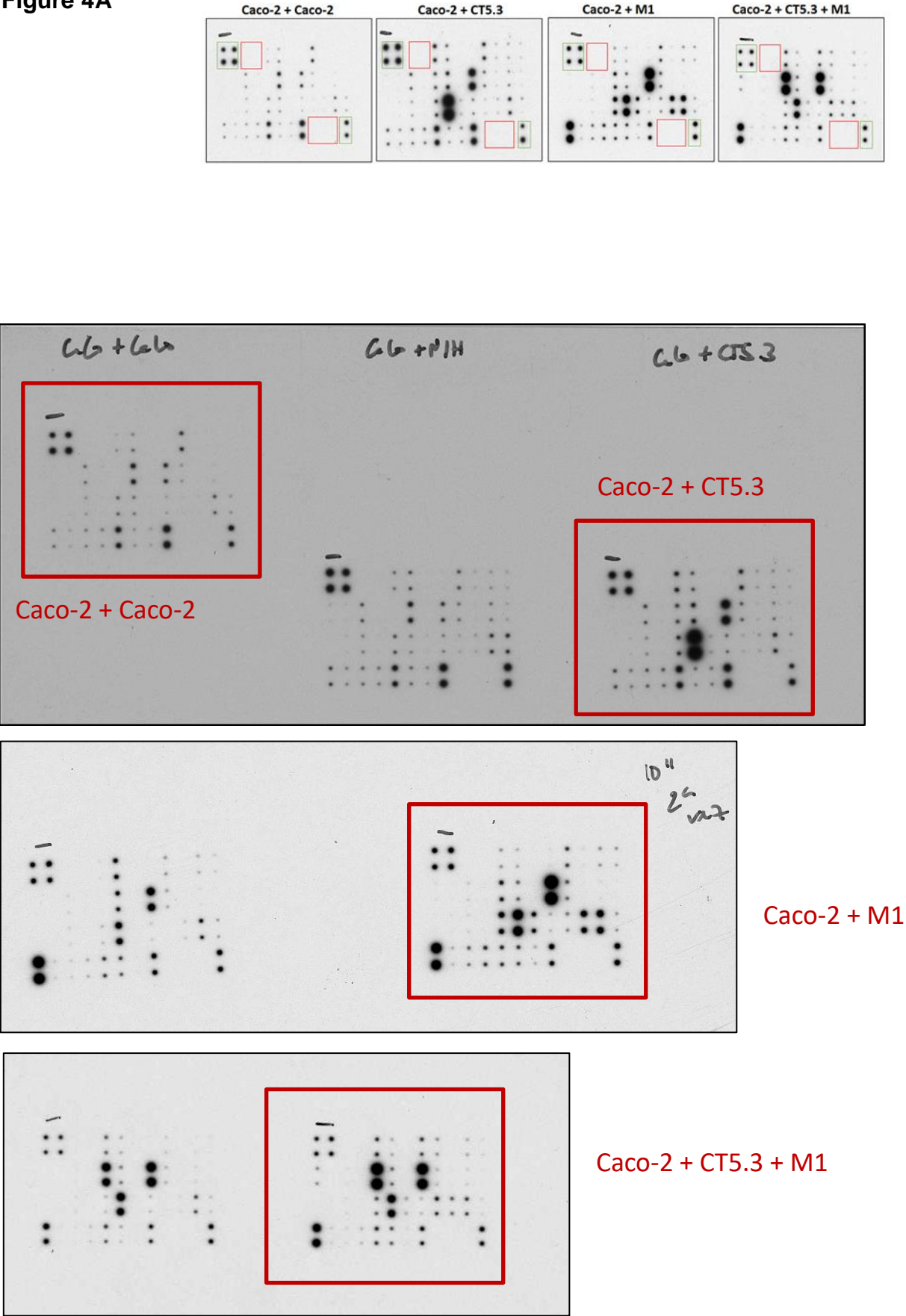


Figure 5A

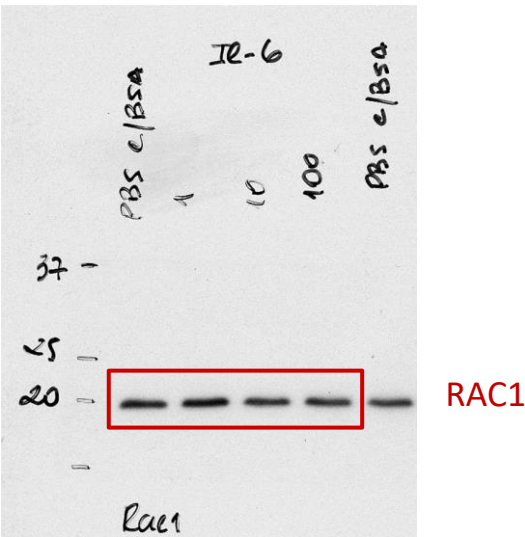
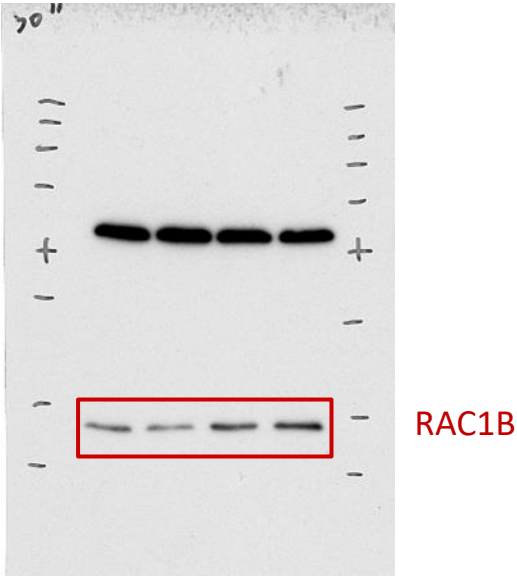
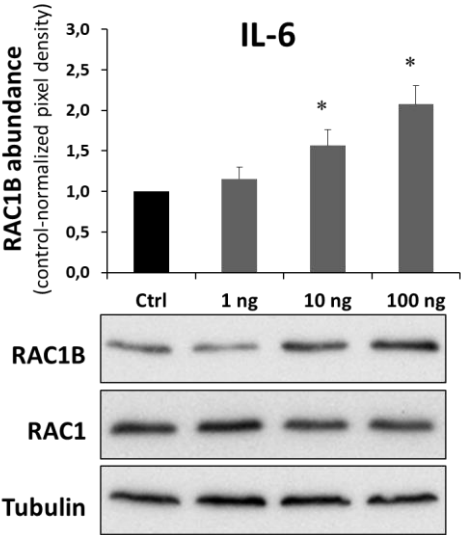
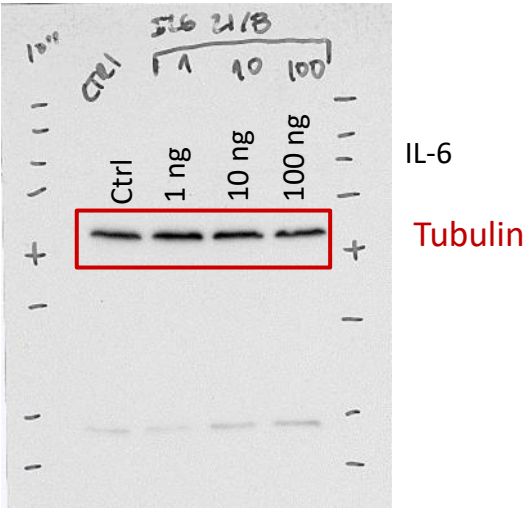
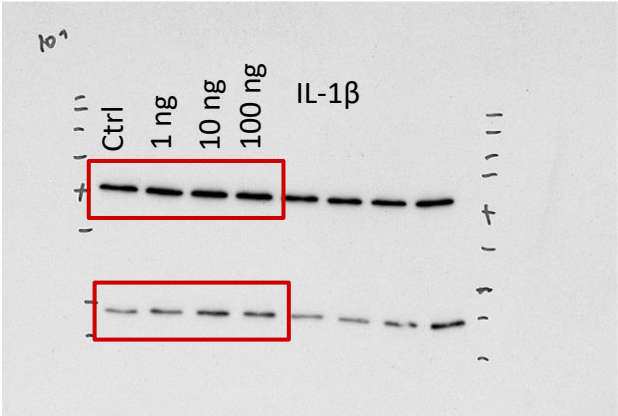
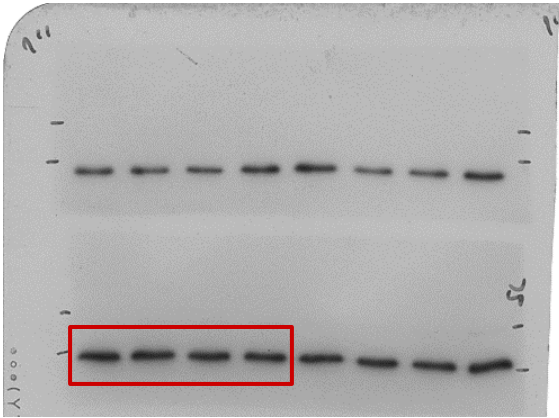


Figure 5B

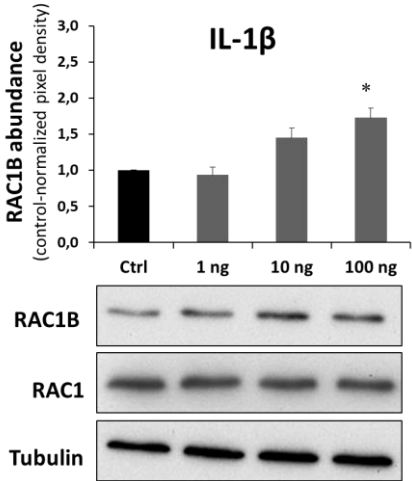


Tubulin

RAC1B



RAC1



Figures 5C + D

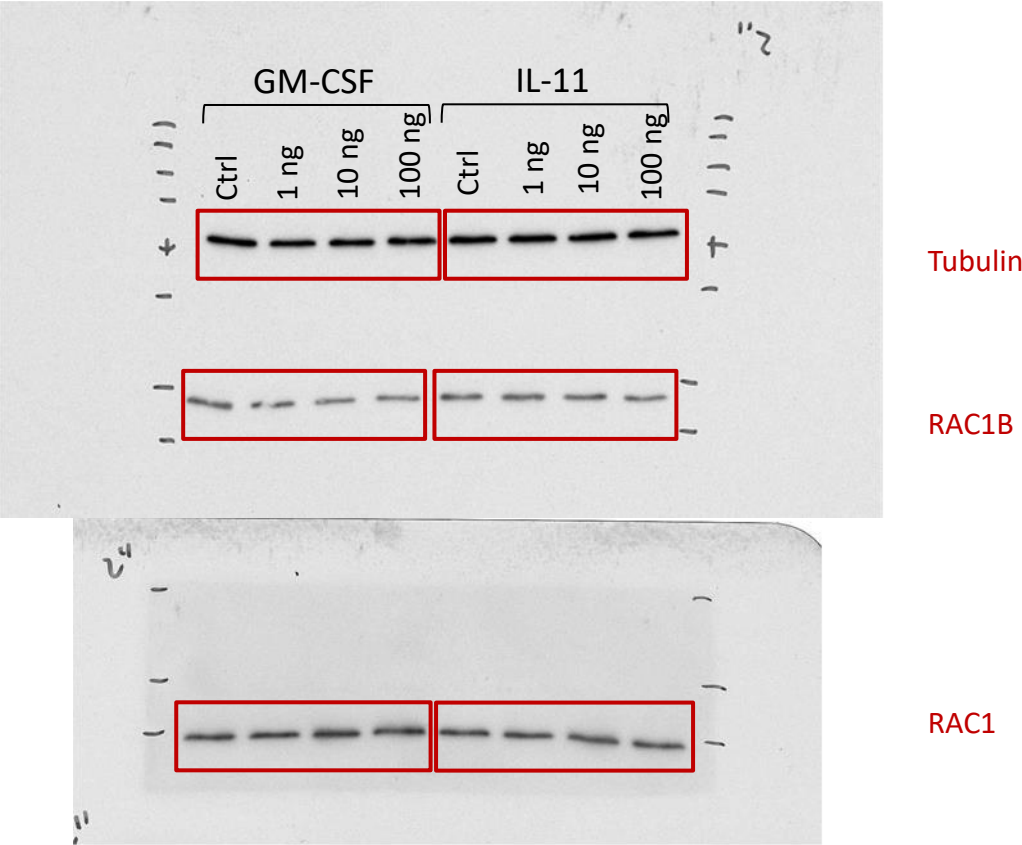
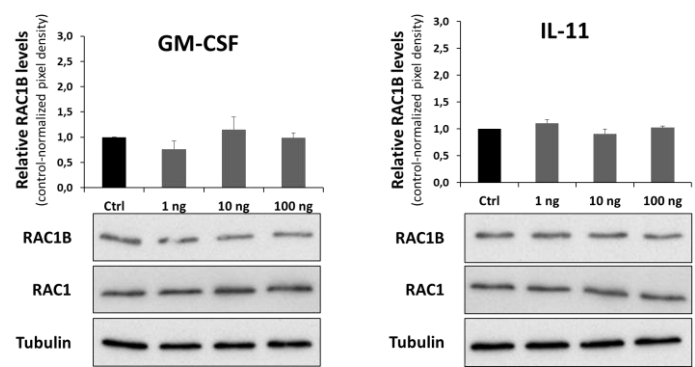


Figure 6A

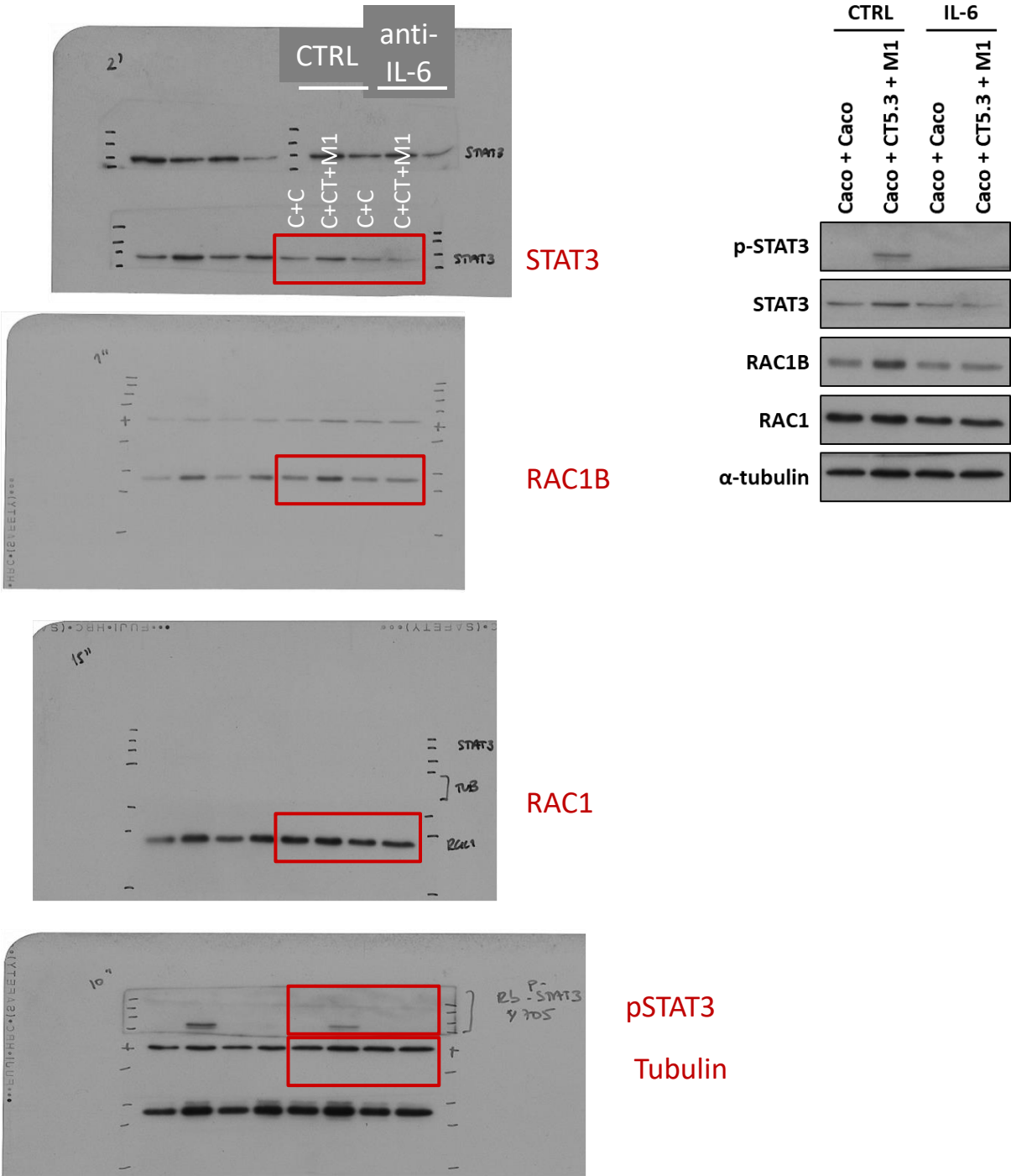


Figure 6B

Western blot analysis of pSTAT3, Tubulin, RAC1B, and RAC1 in Caco-2 cells. The blots show protein levels under different conditions: CTRL (C+C, C+CT+M1) and anti-IL-1 β (C+C, C+CT+M1). The blots are labeled with α -IL-1 β and the date 3.3.2021.

Protein levels are indicated by the intensity of the bands. Red boxes highlight the bands for pSTAT3, Tubulin, RAC1B, and RAC1. The blots are labeled with p-STAT3 (1170s), α -TUB, RAC1B, and RAC1.

Western blot analysis of p-STAT3, STAT3, RAC1B, RAC1, and α -tubulin in Caco-2 cells. The blots show protein levels under different conditions: CTRL (Caco + Caco, Caco + CT5.3 + M1) and anti-IL-1 β (Caco + Caco, Caco + CT5.3 + M1). The blots are labeled with p-STAT3, STAT3, RAC1B, RAC1, and α -tubulin.

Protein levels are indicated by the intensity of the bands. The blots are labeled with p-STAT3, STAT3, RAC1B, RAC1, and α -tubulin.

Figure 6C

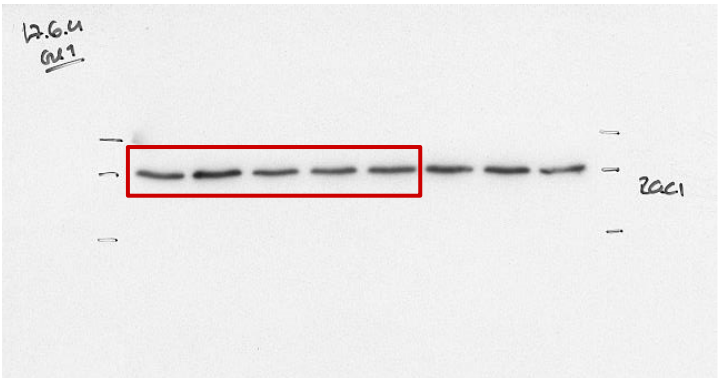
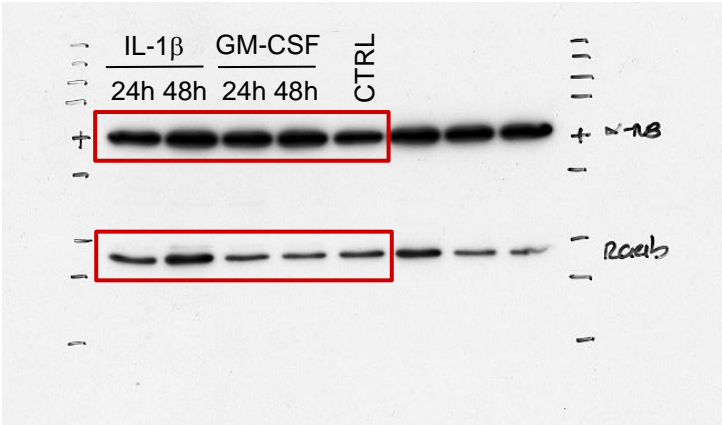
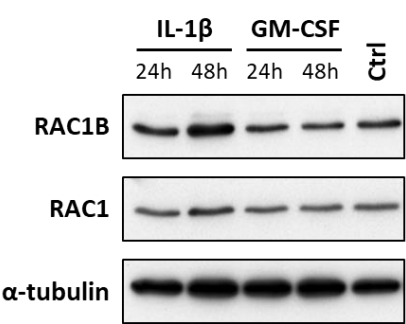
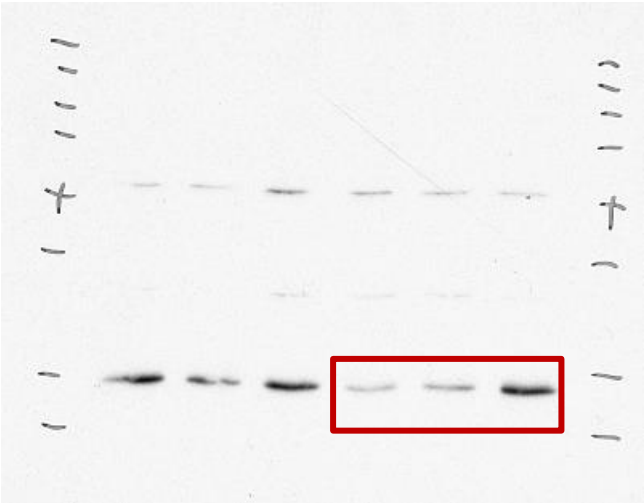
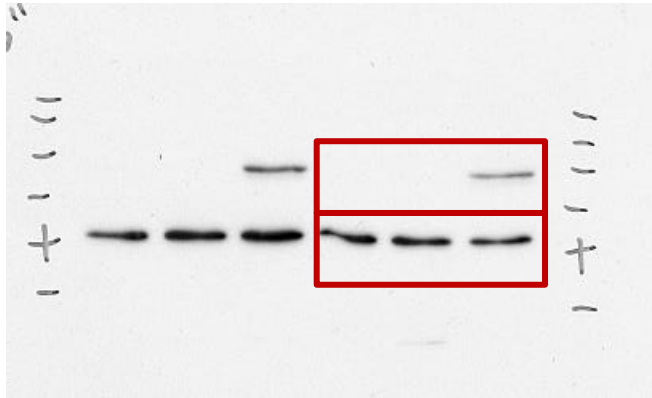


Figure 7B

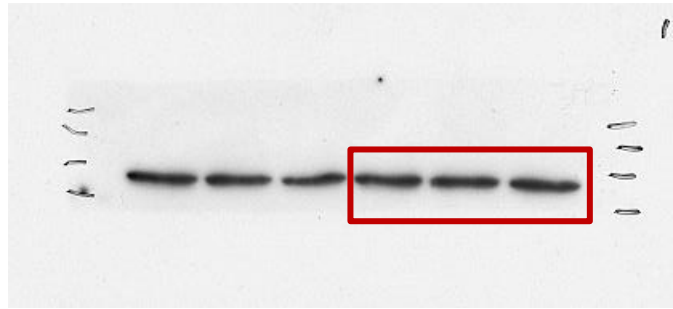


RAC1B

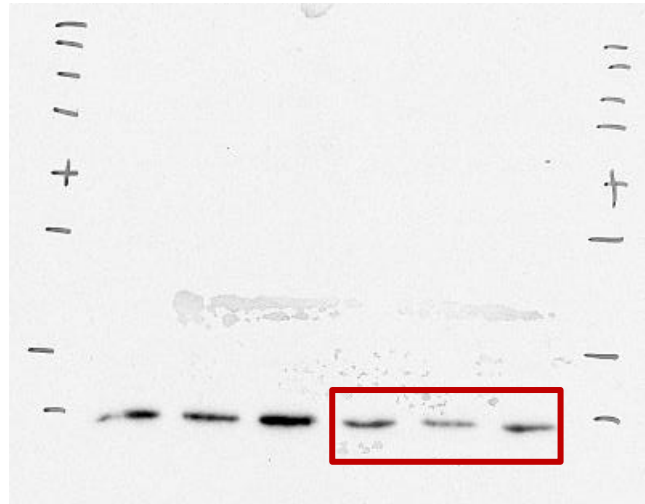


pSTAT3

Tubulin



STAT3



RAC1

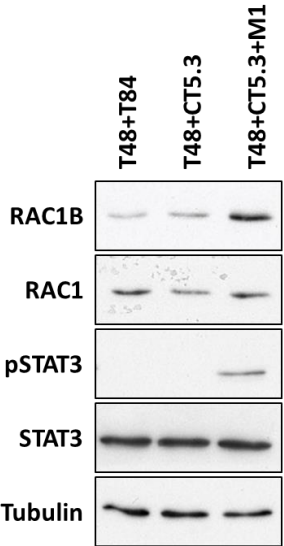


Figure 7E

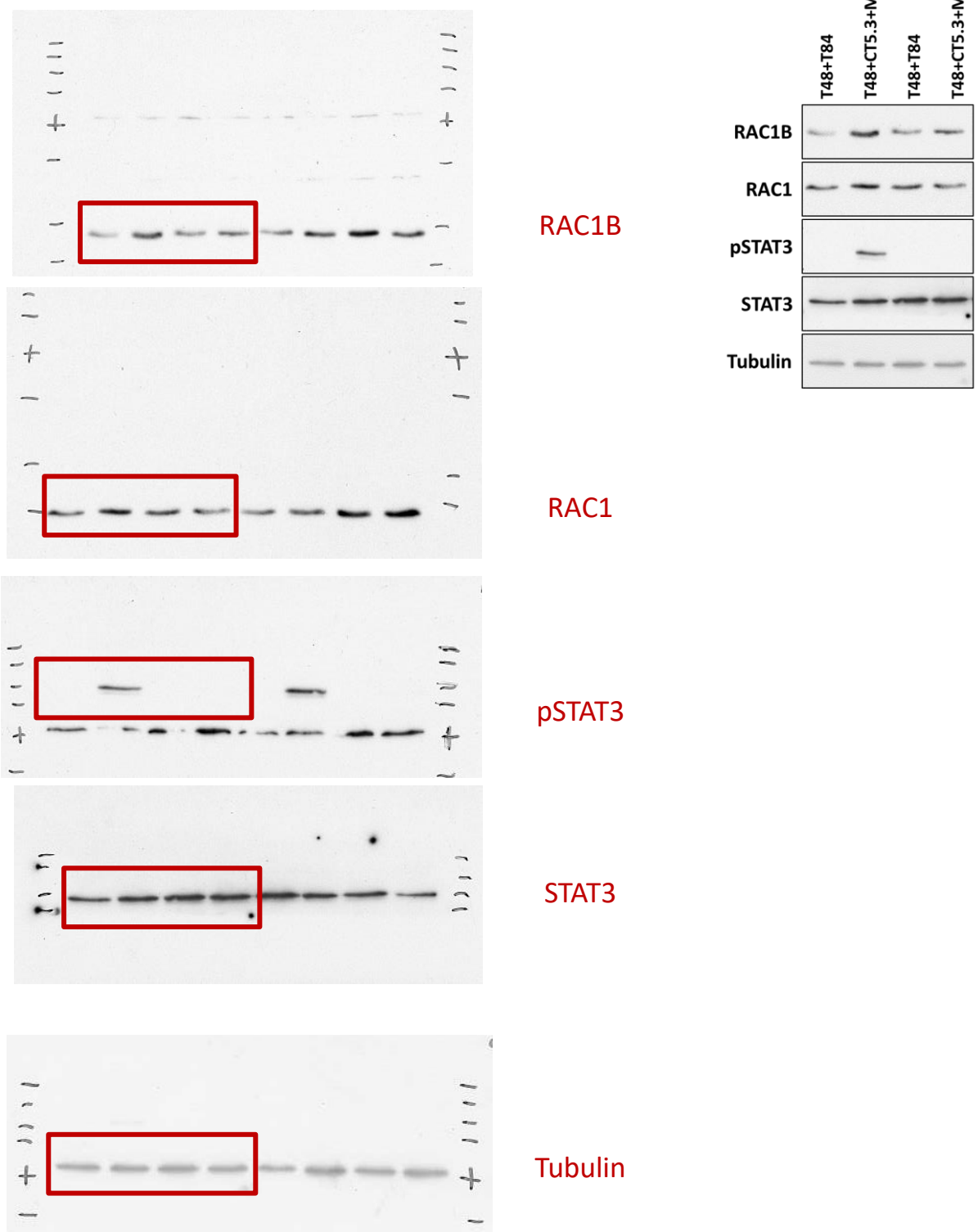


Figure 7 G

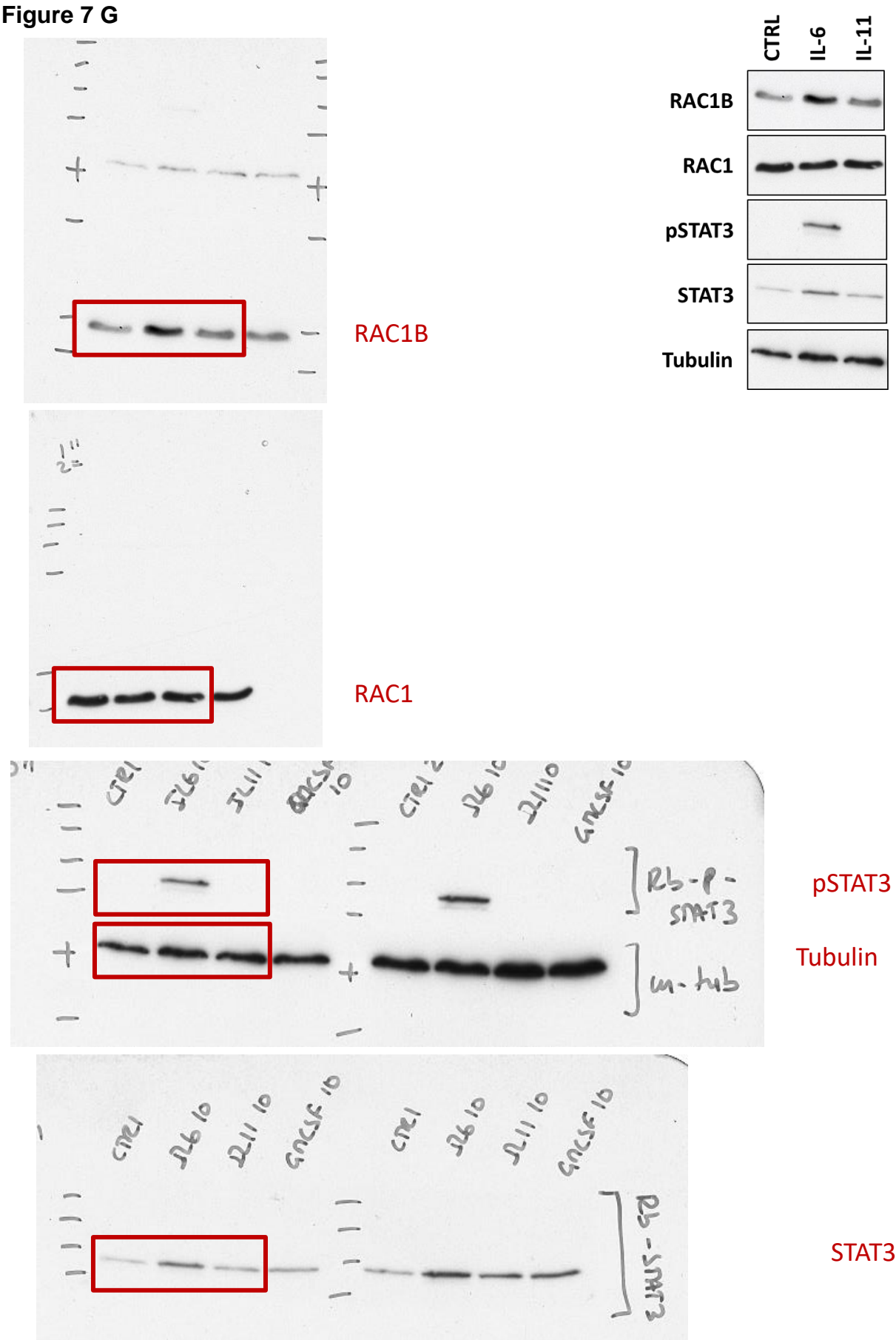


Figure S1A

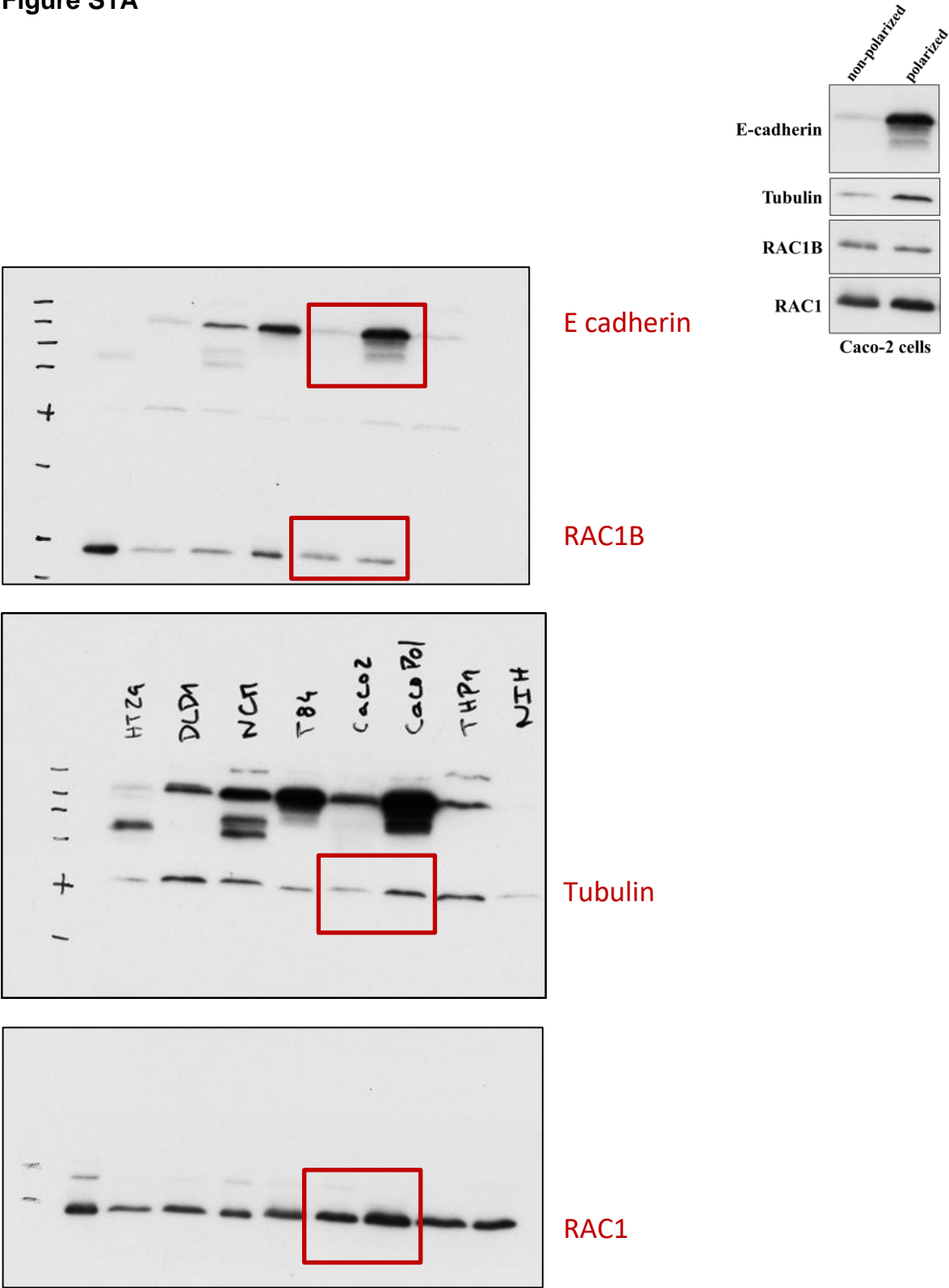
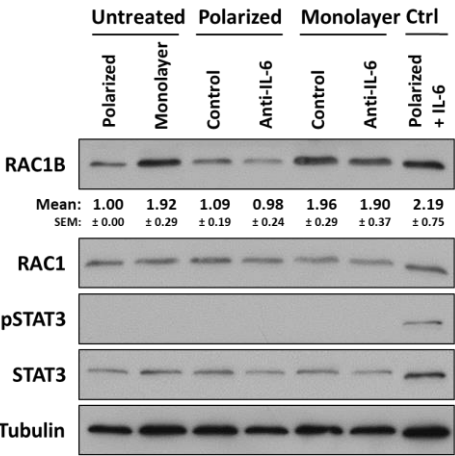
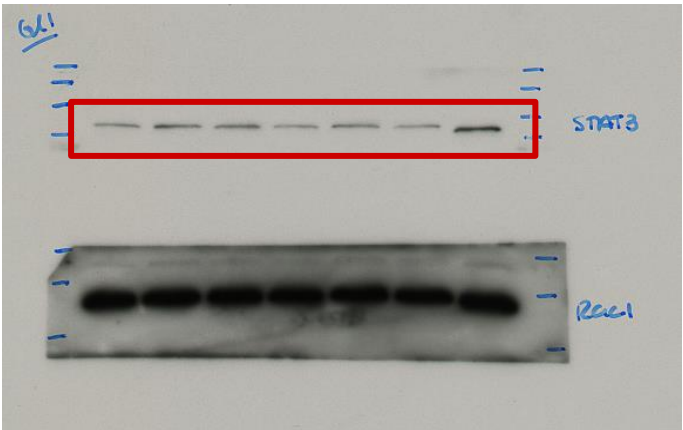
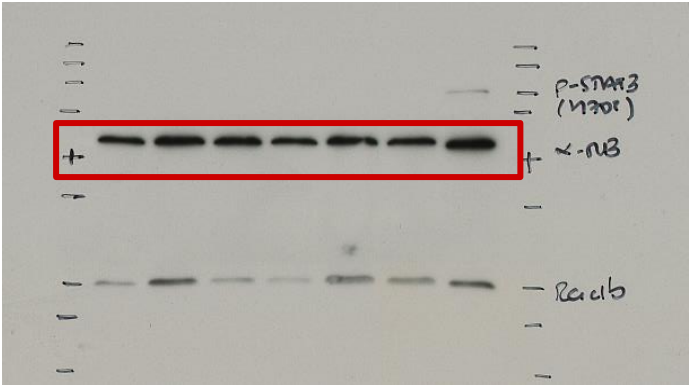
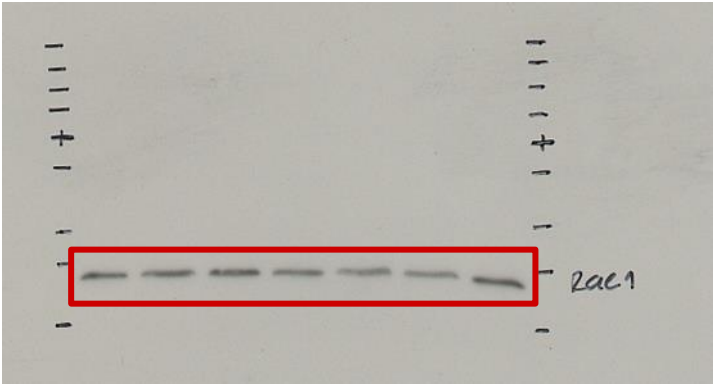
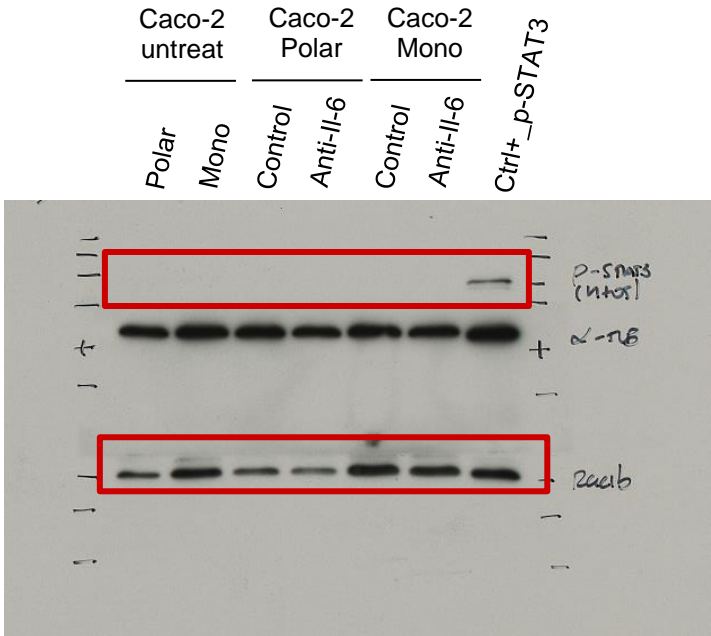


Figure S3A



pSTAT3

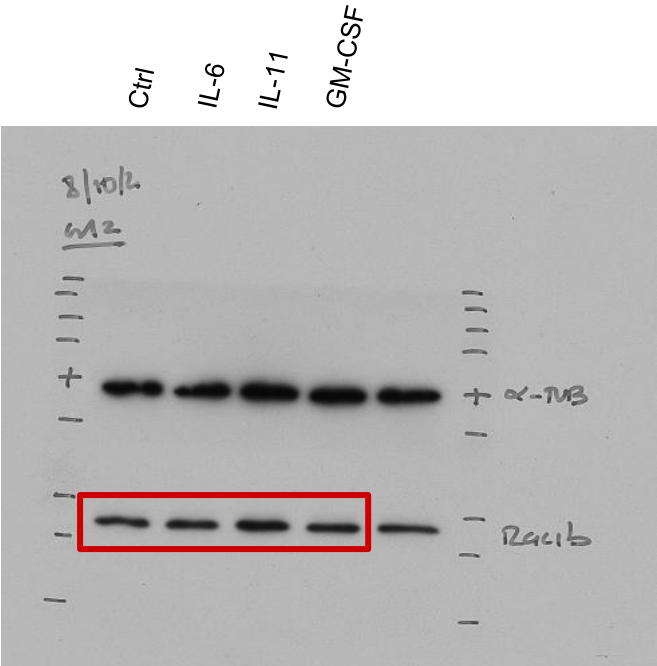
RAC1B

RAC1

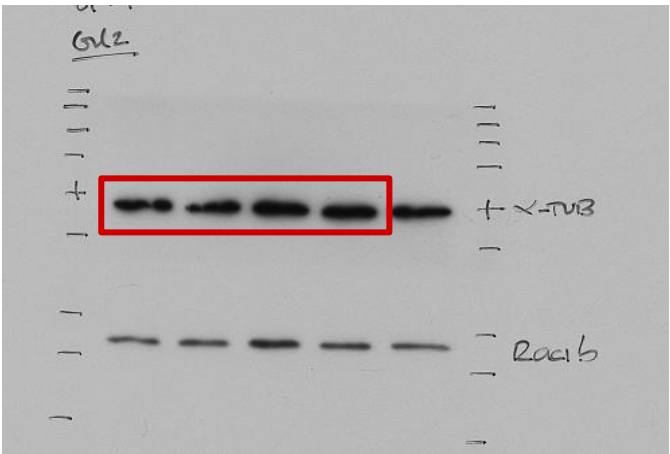
Tubulin

STAT3

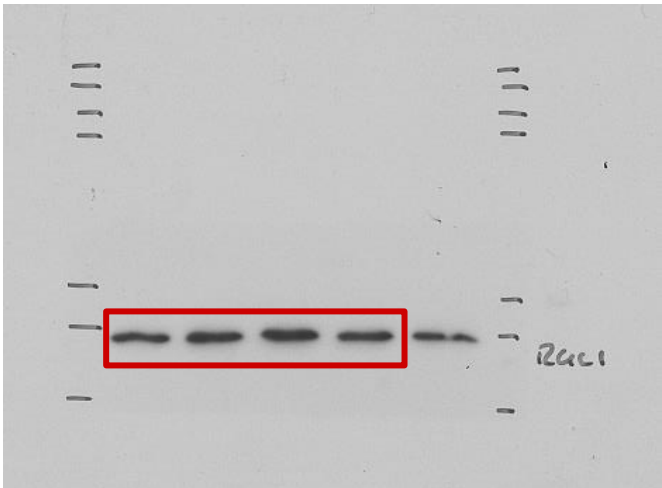
Figure S3B



RAC1B



Tubulin



RAC1

