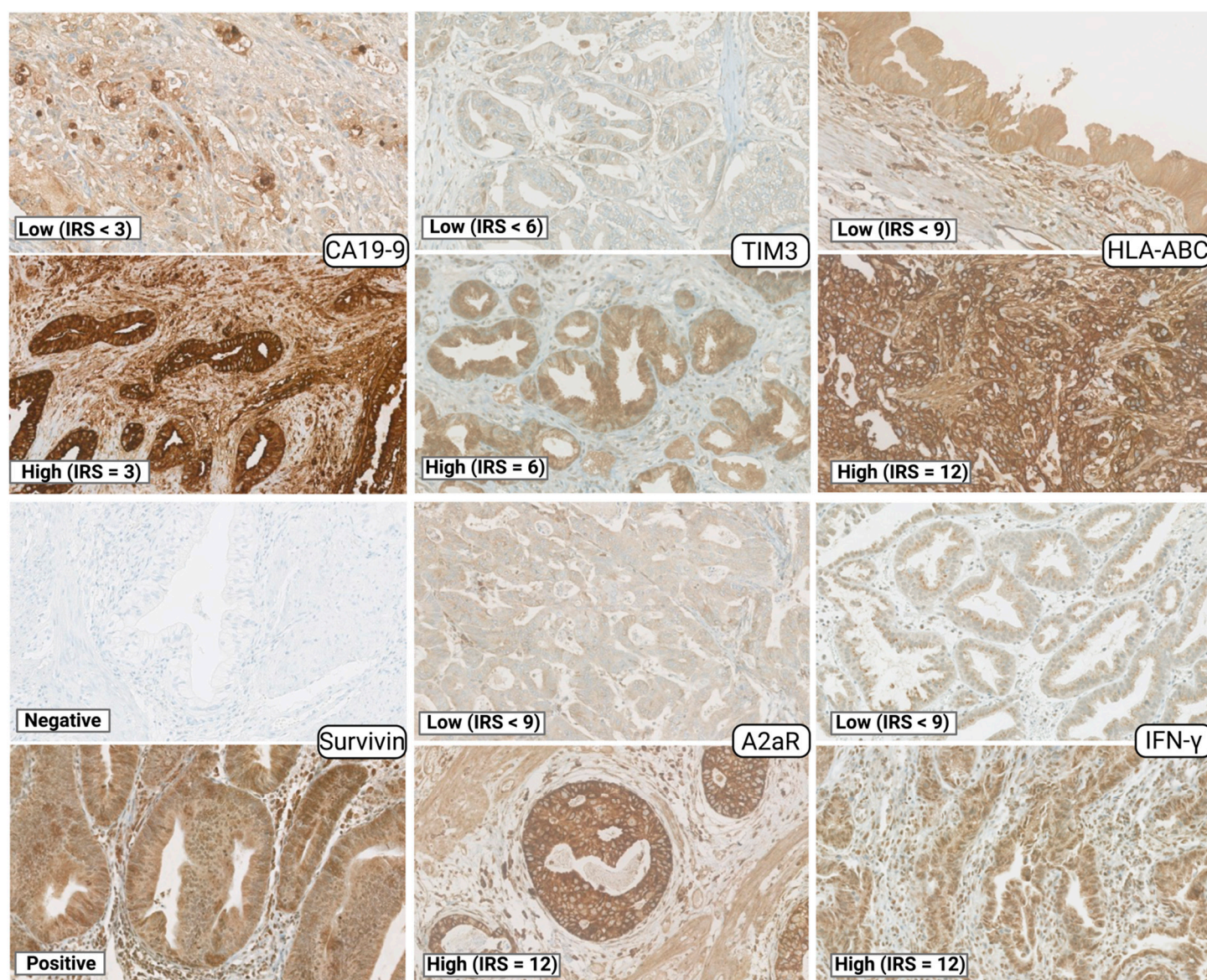


Supplementary Materials

Co-Expression of Immunohistochemical Markers MRP2, CXCR4, and PD-L1 in Gallbladder Tumors Is Associated with Prolonged Patient Survival

Andrés Tittarelli, Omar Barriá, Evy Sanders, Anna Bergqvist, Daniel Uribe Brange, Mabel Vidal María Alejandra Gleisner, Jorge Ramón Vergara, Ignacio Niechi, Iván Flores, Cristián Pereda, Cristian Carrasco, Claudia Quezada-Monrás and Flavio Salazar-Onfray



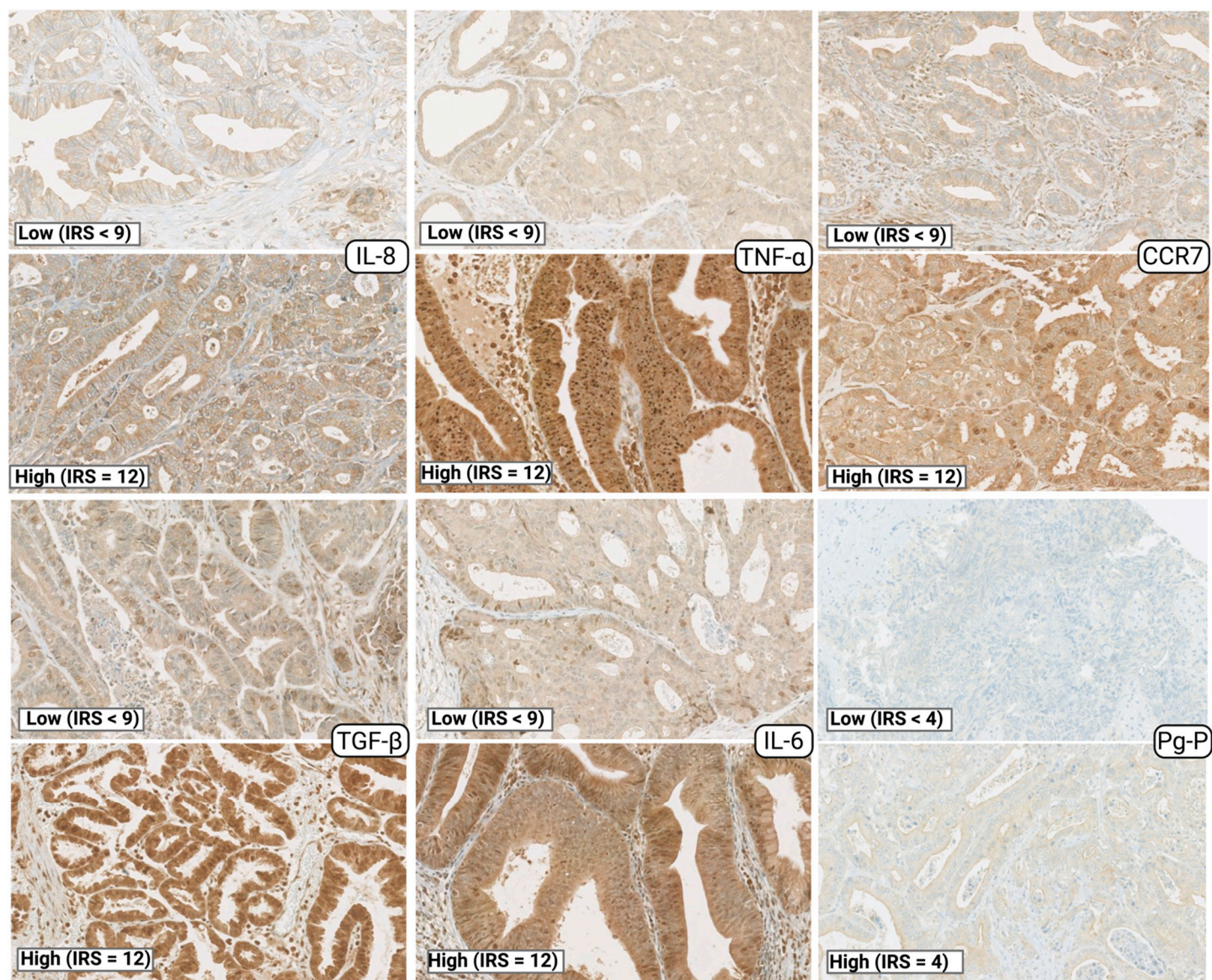


Figure S1. Examples of immunohistochemical images for representative tumor markers. Images correspond to 80X magnifications of microarray photographs. IRS, immunoreactive score.

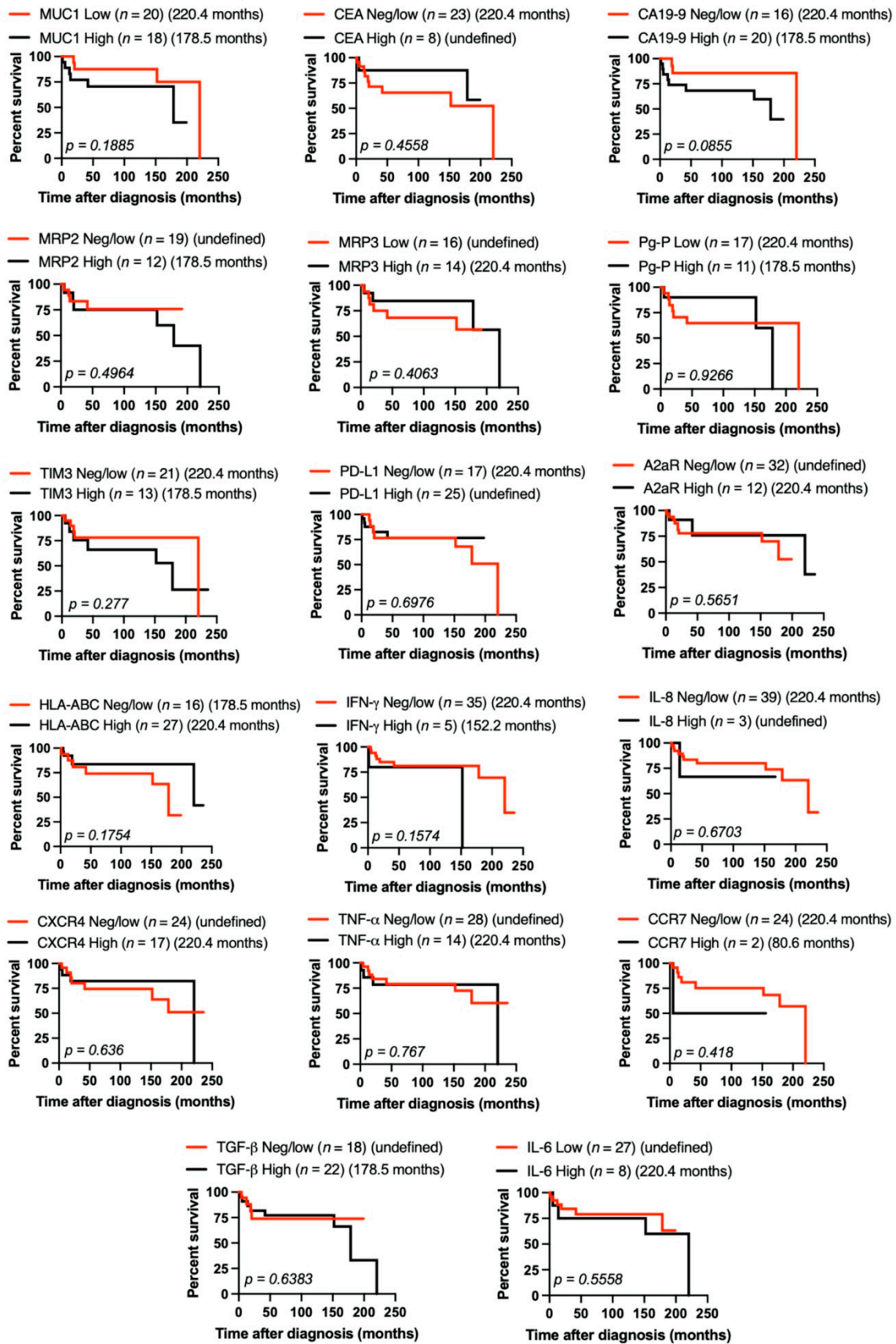


Figure S2. Association among tumor markers and overall survival (OS) of gallbladder cancer (GBC) patients with early-stage primary tumors. Kaplan-Meier post-diagnosis OS estimation of early-stage tumor-bearing GBC patients, according to tumor expression patterns (neg/low vs. high expression). Each graph shows the number of patients in each group (n) and the median OS time in months. The p -values were calculated using a log-rank (Mantel-Cox) test.