

SUPPLEMENTARY DATA

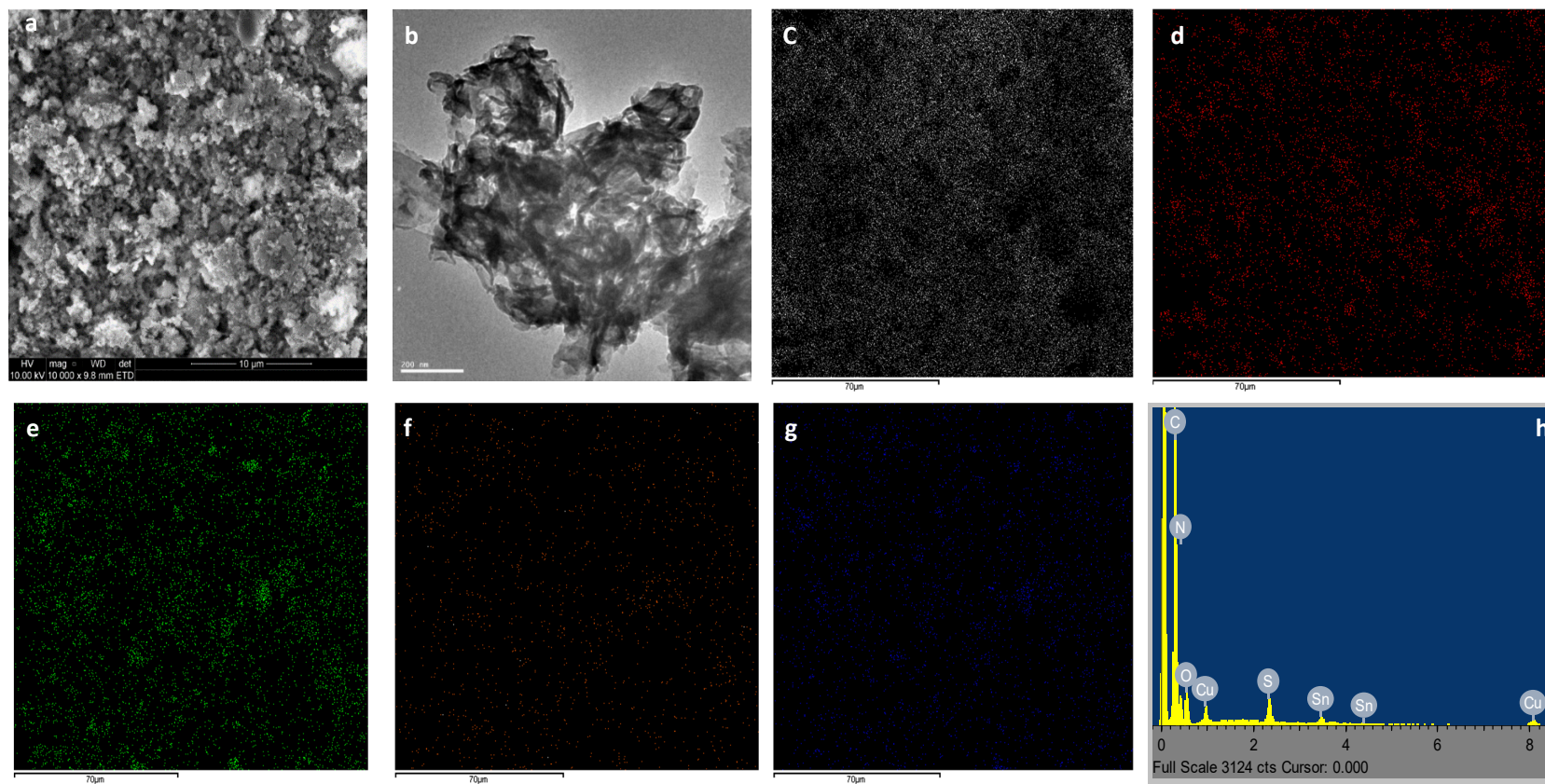


Figure S1: (a) SEM, (b) TEM, elemental mapping of (c) carbon (C), (d) nitrogen (N), (e) sulfur (S), (f) Cu (copper) and (g) tin (Sn) and (h) EDS spectra of PCN-CTS

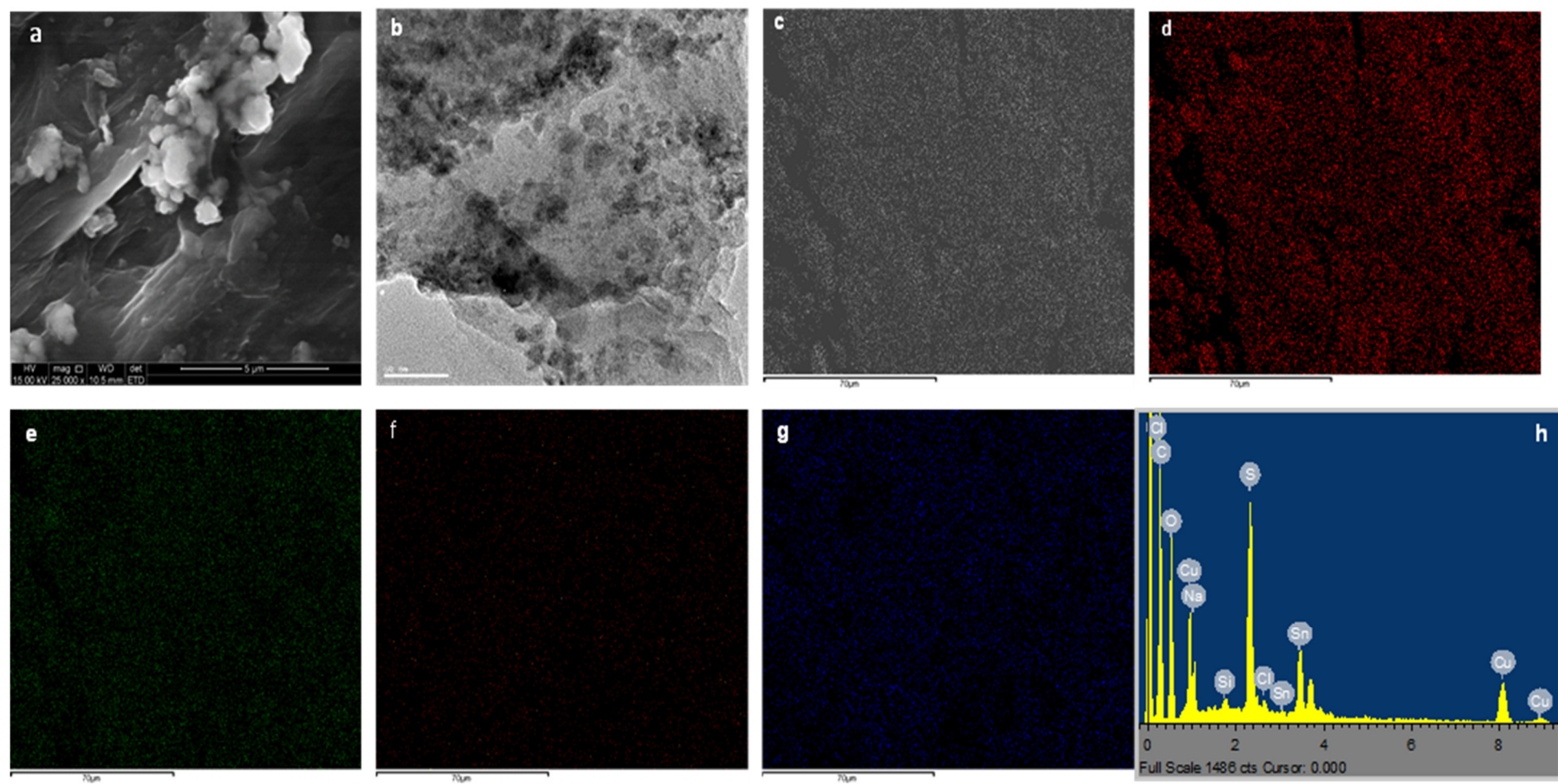


Figure S2: (a) SEM, (b) TEM, elemental mapping of (c) carbon (C), (d) nitrogen (N), (e) sulfur (S), (f) Cu (copper) and (g) tin (Sn) and (h) EDS spectra of GO-CTS

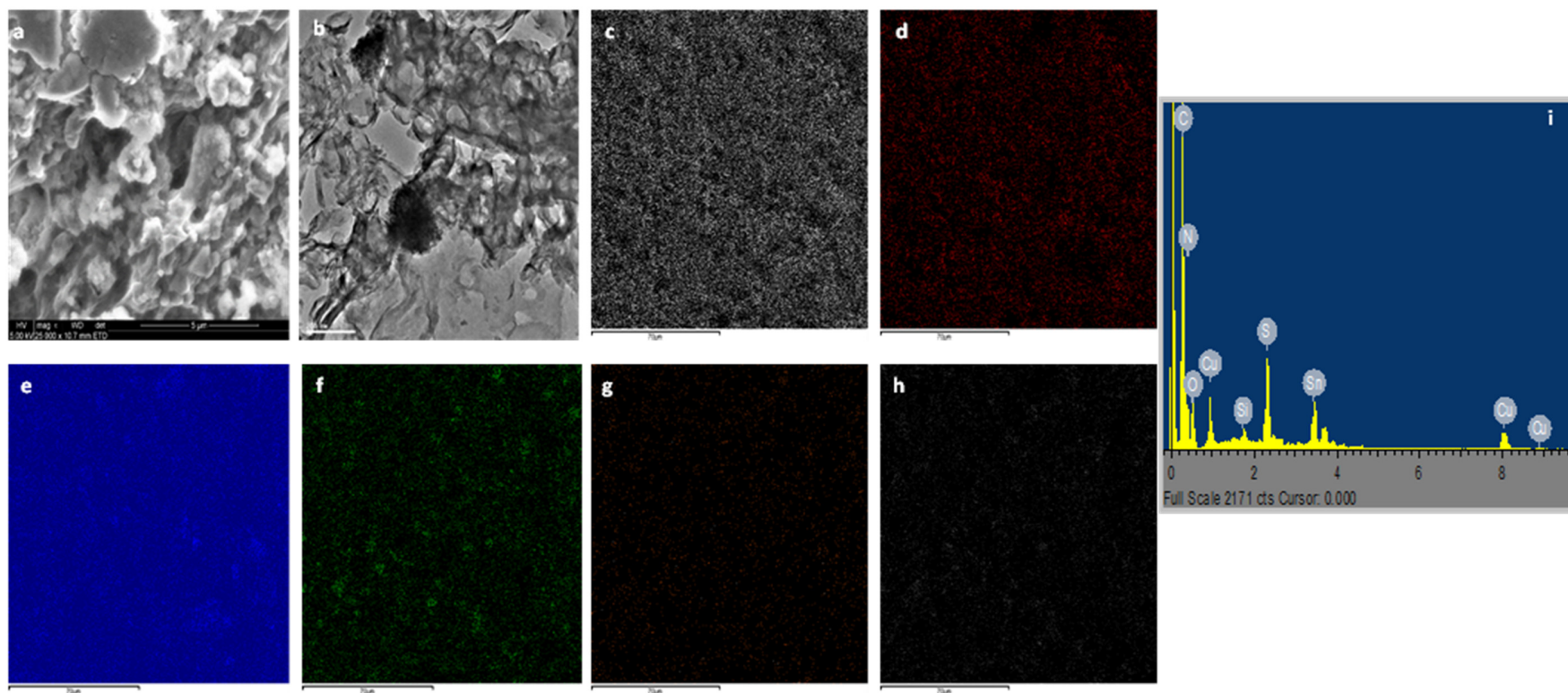
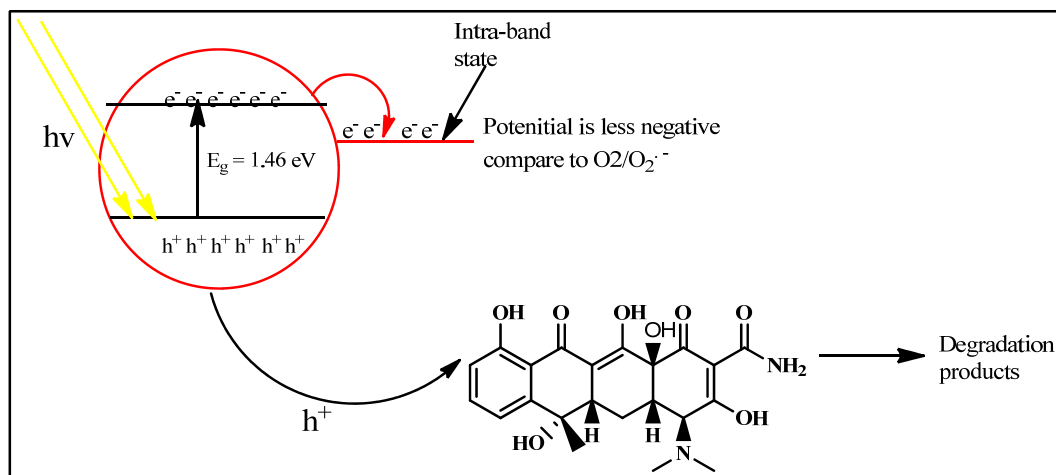
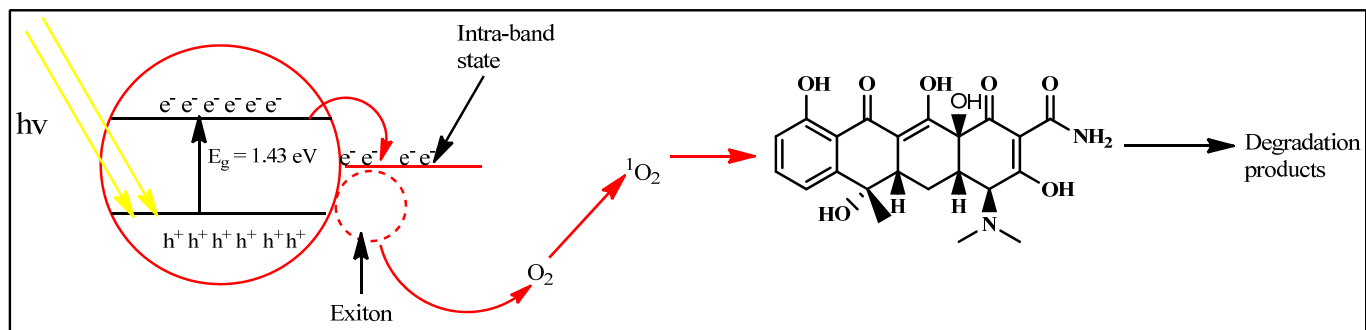


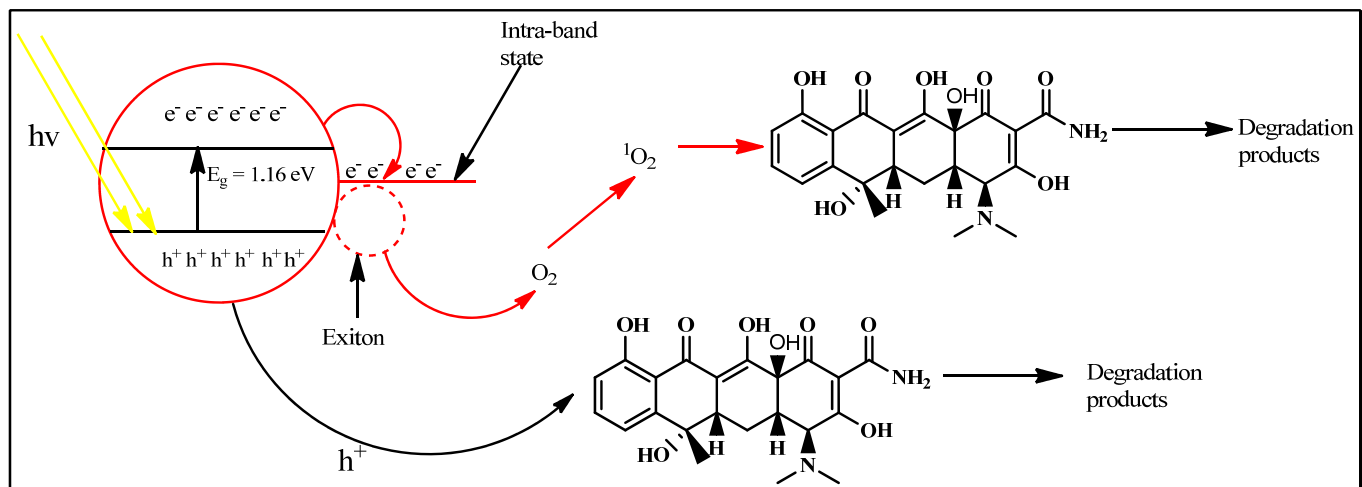
Figure S3: (a) SEM, (b) TEM, elemental mapping of (c) carbon (C), (d) nitrogen (N), (e) oxygen (O) (f) sulfur (S), (g) Cu (copper) and (h) tin (Sn) and (i) EDS spectra of PCN/GO-CTS



(a) GO-CTS



(b) PCN-CTS



(c) PCN/GO-CTS

Figure S4: Schematic diagram of the proposed mechanism of action of (a) GO-CTS (b) PCN-CTS and (c) PCN/GO-CTS