

Figure S1. The frequencies of Raman spectra for all Y-doped glass samples.

Table S1. The DSC parameters of all glass samples.

DSC Parameters	G0	G2	G4	G6	G8	G10
T_g (°C)	570	571	566	579	577	574
T_{p1} (°C)	697	675	666	676	679	669
T_{p2} (°C)	724	693	681	694	691	685
$T_{p1}-T_g$ (°C)	127	105	100	97	102	95

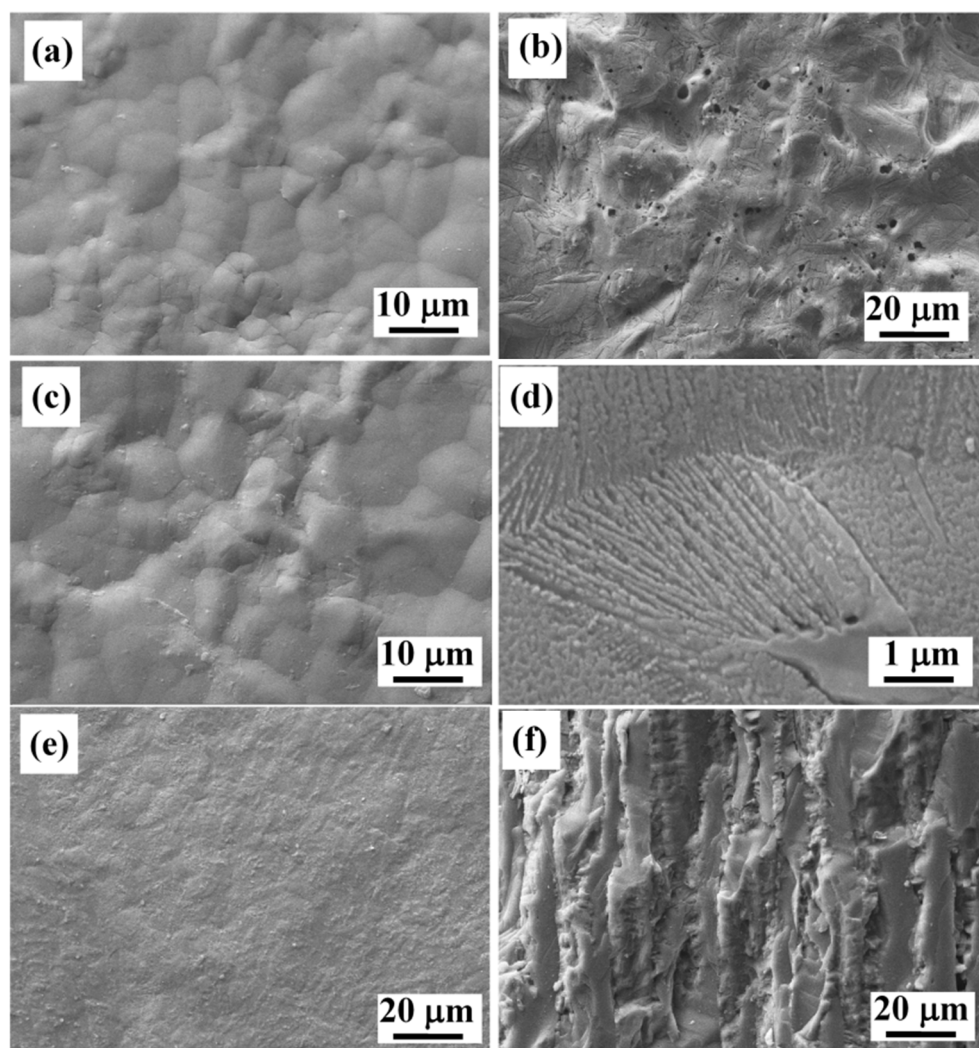


Figure S2. SEM images of the GC0 sample at different crystallization times of (a,b) 2 h, (c,d) 5 h, and (e,f) 10 h. The samples (b,d,f) were etched in 40% HF for 15–20 s.