

Supplementary information present SEM images in SE mode of $\text{CaV}_{1-x}\text{Mo}_x\text{O}_{3-\delta}$ samples, as well as real-resolution HRTEM images supported by fast Fourier transform (FFT) diffraction patterns and filtered images of the analyzed areas.

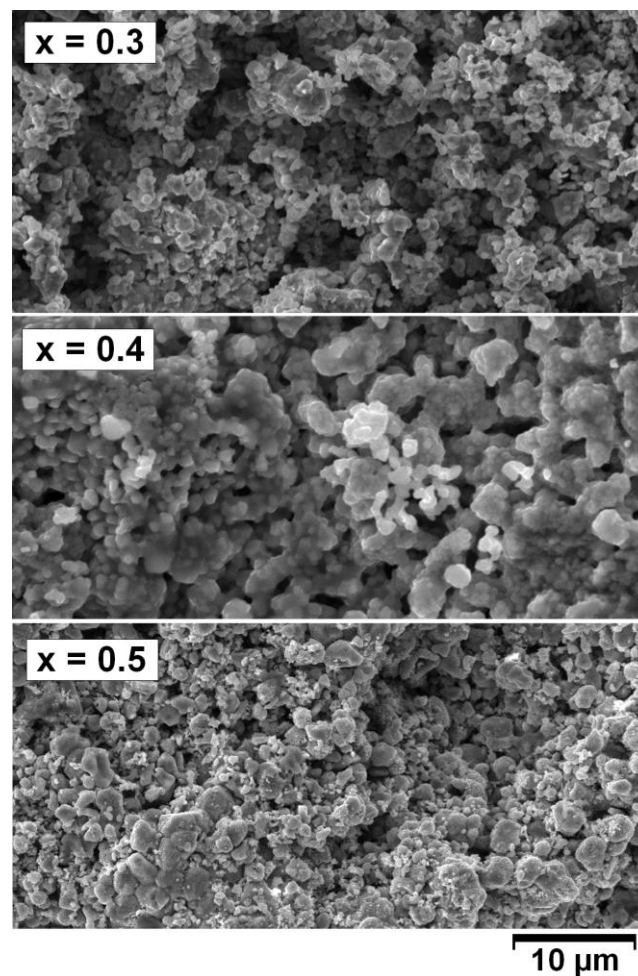


Figure S1. SEM-images (SE mode) of the surface of sintered $\text{CaV}_{1-x}\text{Mo}_x\text{O}_{3-\delta}$ ($0.3 \leq x \leq 0.5$) ceramic samples.

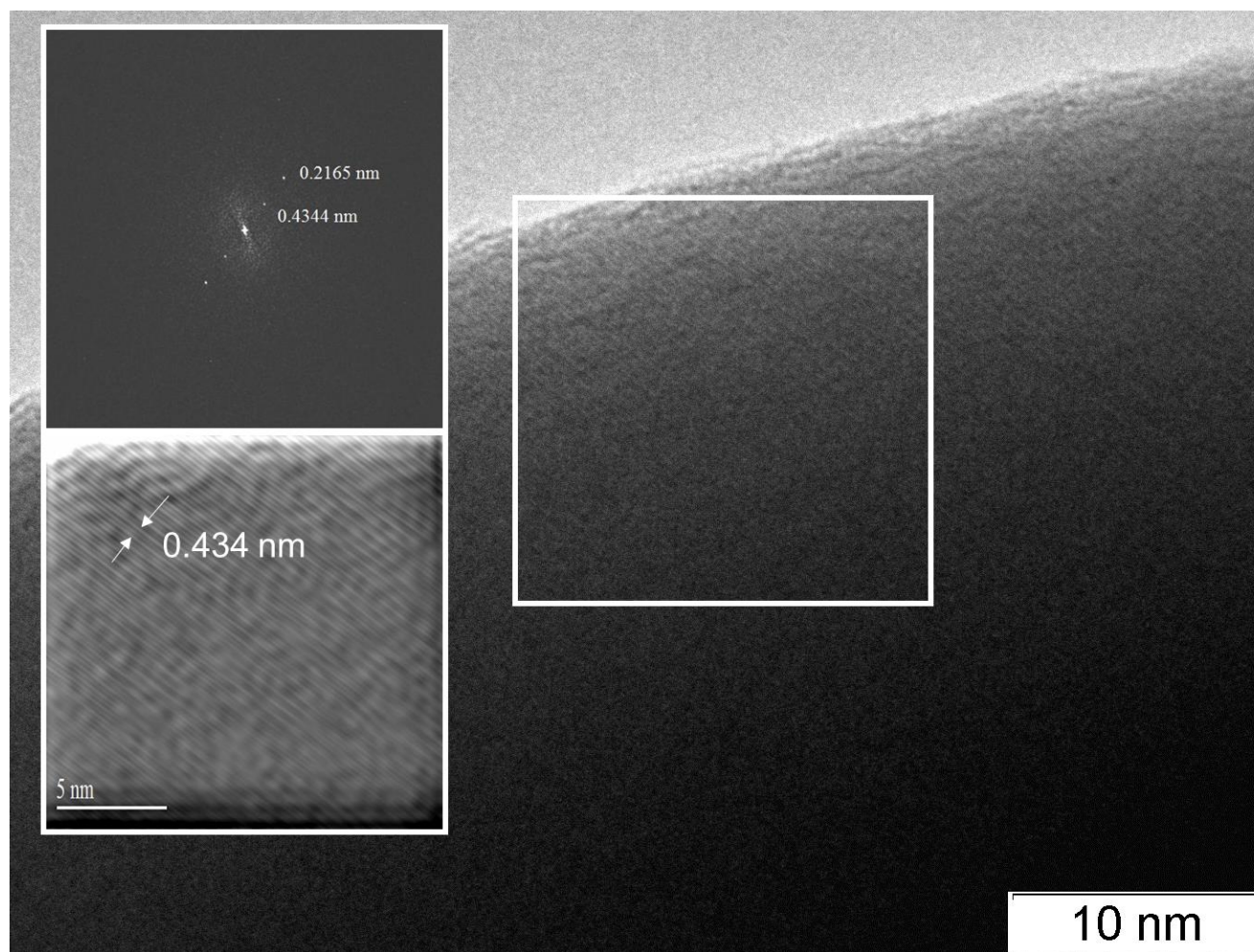


Figure S2. Real-resolution HRTEM image supported by FFT diffraction patterns for $\text{CaV}_{0.5}\text{Mo}_{0.5}\text{O}_{3-\delta}$ sample.

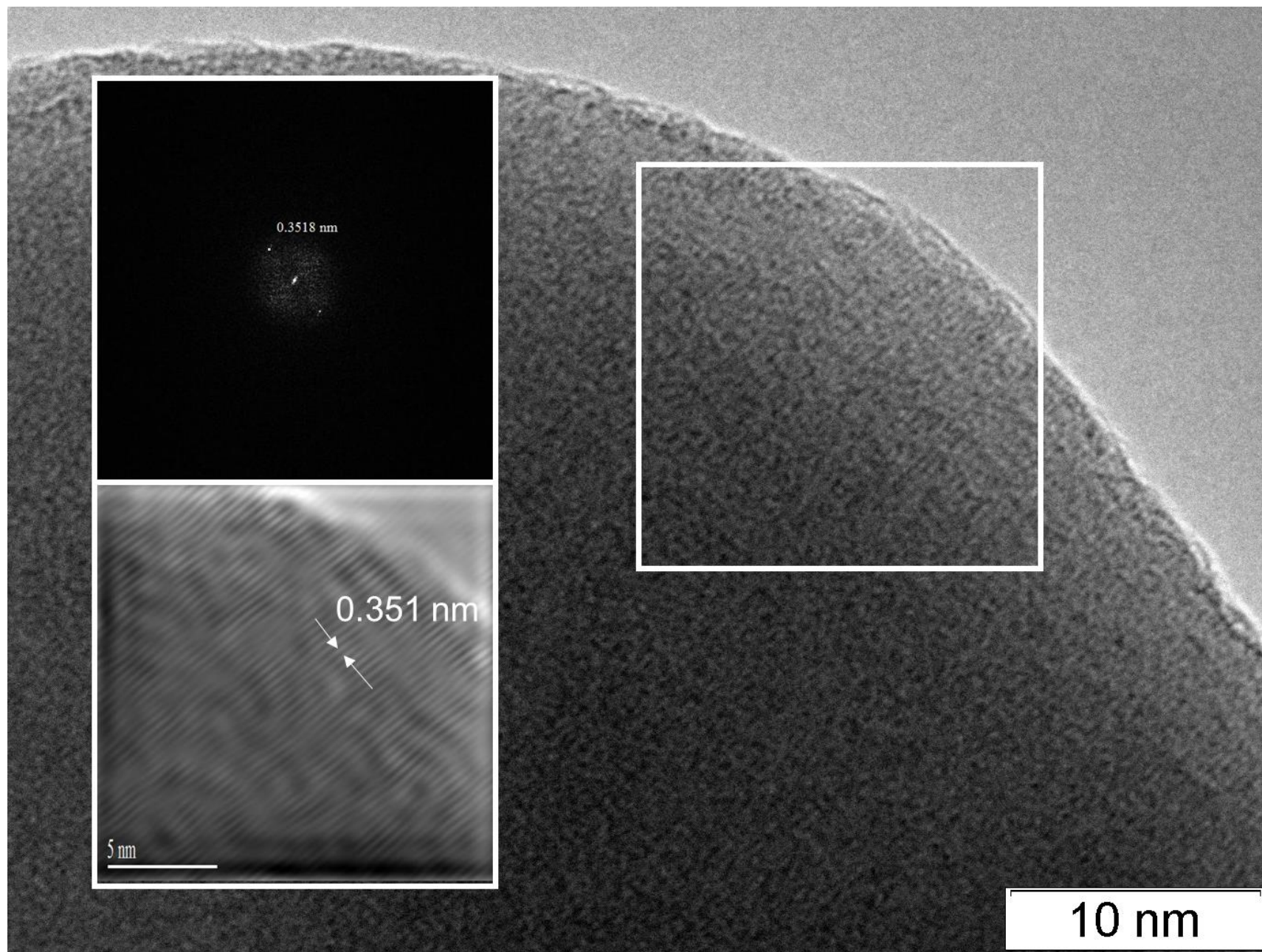


Figure S3. Real-resolution HRTEM image supported by FFT diffraction patterns for $\text{CaV}_{0.6}\text{Mo}_{0.4}\text{O}_{3-\delta}$ sample (region 1).

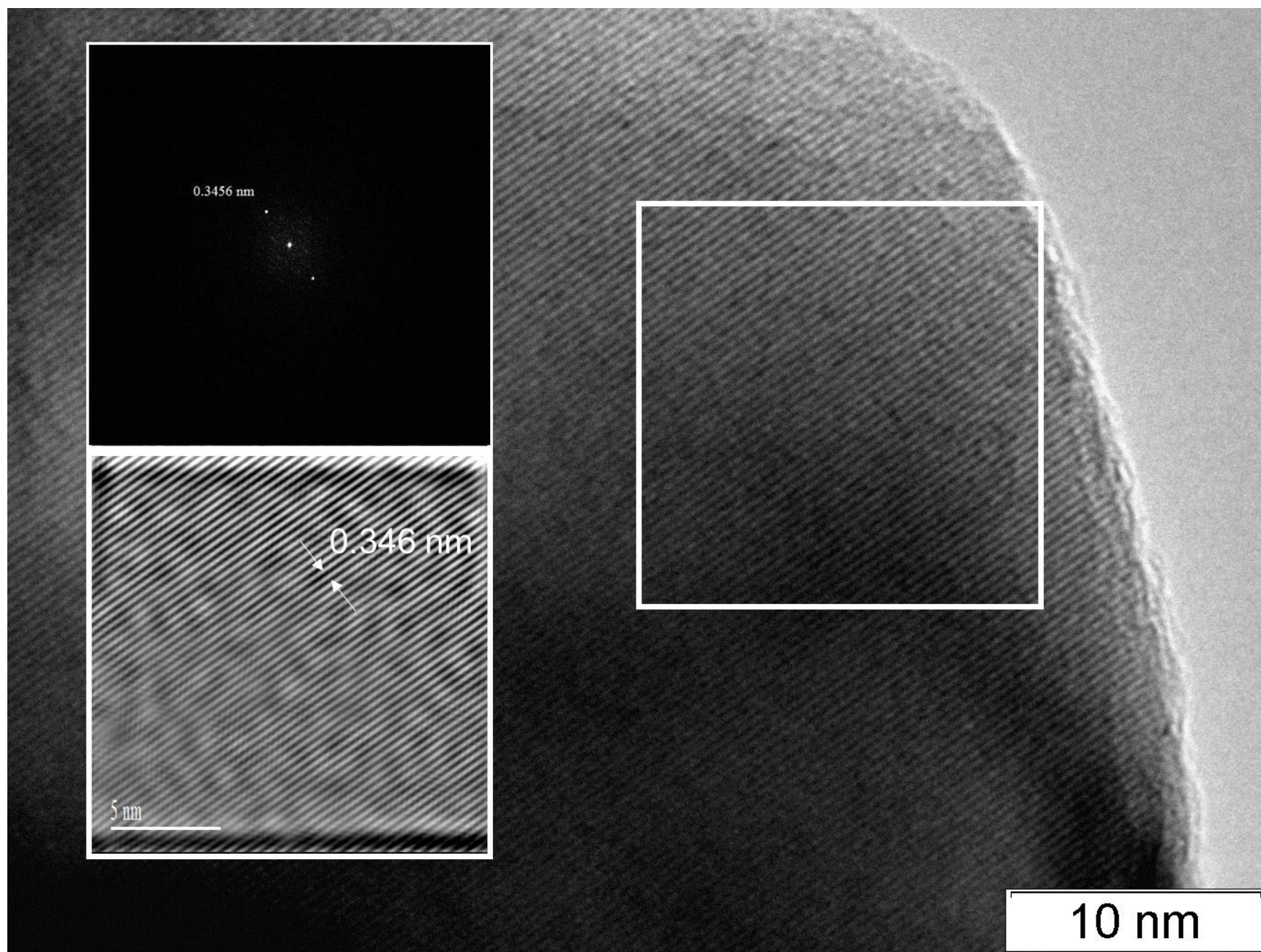


Figure S4. Real-resolution HRTEM image supported by FFT diffraction patterns for $\text{CaV}_{0.6}\text{Mo}_{0.4}\text{O}_{3-\delta}$ sample (region 2).

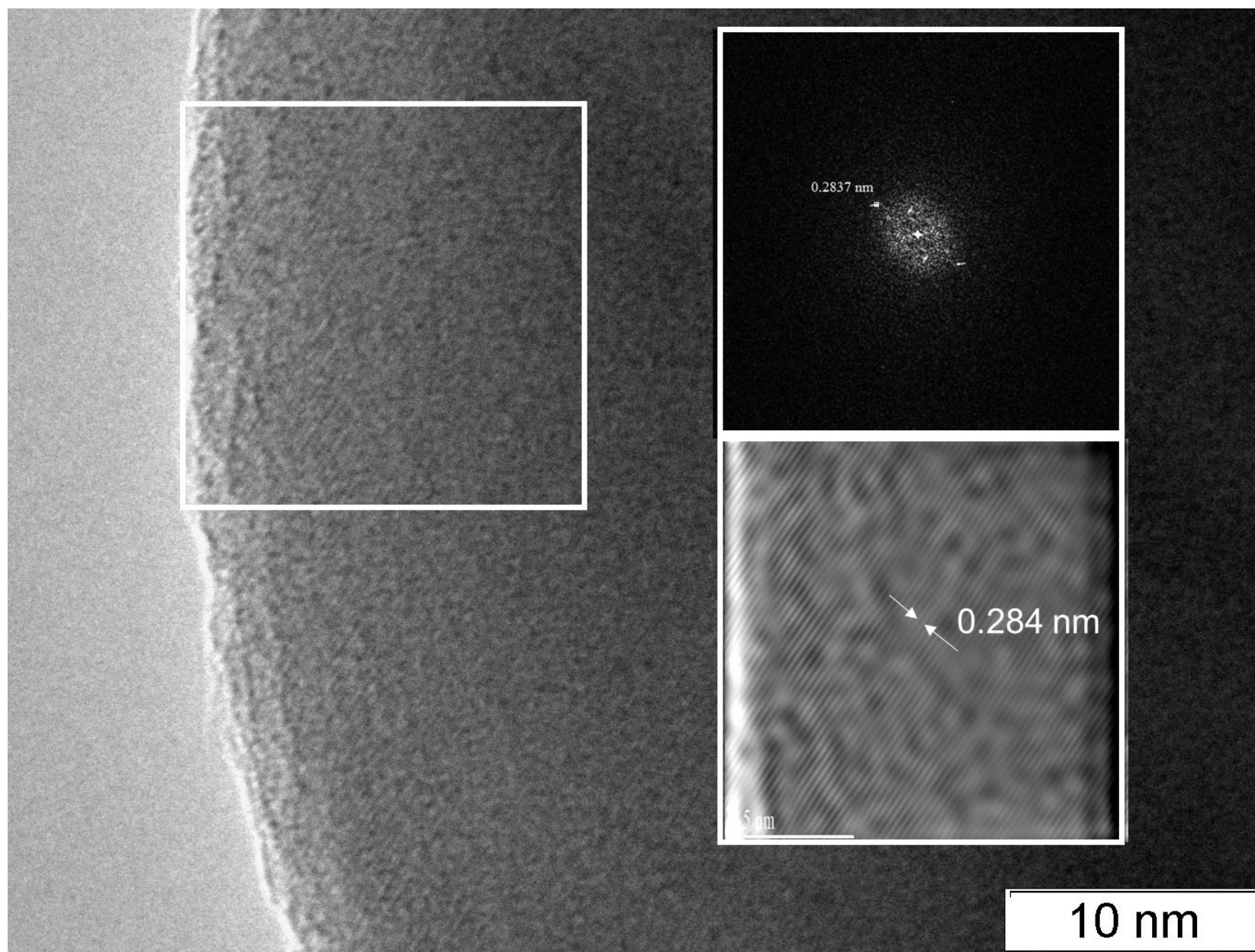


Figure S5. Real-resolution HRTEM image supported by FFT diffraction patterns for $\text{CaV}_{0.6}\text{Mo}_{0.4}\text{O}_{3-\delta}$ sample (region 3).